

Llandyry Cemetery Survey 2023



A Report on the Historical Significance
of Llandyry Churchyard, Wales

Published 2023

Llandyry Church Cemetery Project

2023



A systematic survey and digital documentation of
Llandyry Church Churchyard, Trimsaran
Carmarthenshire, Wales

GPS Located | Grid Referenced | Digitally Archived
Welsh Inscriptions Transcribed & Translated

Recorded in the Royal Commission on the Ancient and Historical Monuments of Wales

<https://coflein.gov.uk/en/sites/310153>

Graham Tudor Emmanuel

Kidwelly, Carmarthenshire | 2023

Where It All Began

What This Document Contains

A Guide for the Reader and Researcher

This document brings together four distinct elements of the Llandry Church Cemetery heritage project. Each section serves a different purpose – for the casual visitor, the family historian, the academic researcher, and the heritage professional. They are presented in sequence, each building on what came before.

Section One — The Moment I Did Not Realise Had Happened

A personal account of how the Llandry Church Cemetery project came to be formally recognised by the Royal Commission on the Ancient and Historical Monuments of Wales and permanently recorded in Coflein – the national heritage database of Wales. It explains what that recognition means, why it matters for independent community research, and why this project now sits alongside peer-reviewed academic work as a formally endorsed national heritage resource. The section ends with a reflection on what the work ultimately became, and why.

Section Two — Across Three Centuries: A Demographic Analysis

The first comprehensive demographic analysis of Llandry Church Cemetery, drawn from 804 verified FindAGrave memorials and 834 survey entries spanning the years 1801 to 2026. It covers burial patterns by decade, the dramatic rise in life expectancy across the period, the twenty-nine individuals who reached the age of ninety or beyond, infant and child mortality, the fifteen dominant family names accounting for more than half of all burials, and the physical geography of the churchyard mapped to its history. A finding that surprises: the 2000s emerge as the single busiest decade in the cemetery's recorded history, with one hundred burials – more than any decade before or since.

Section Three — The Complete Survey Index

The full GPS-referenced fieldwork record: 834 entries covering every plot visited during the original survey, including unresolved entries, unlocated memorials, and plots where no stone survives. This is the raw research record – honest about what was found and what remains to be identified. The gap between the 834 survey entries and the 804 verified FindAGrave memorials is not an error. It reflects the reality of a working cemetery: shared stones, weathered inscriptions, and plots still awaiting identification. That gap is an invitation to future researchers. Some of those missing entries may be resolved by the church burial register or by future fieldwork.

Section Four — The FindAGrave QR Memorial Ledger

The verified archive of 804 individual memorial entries, each carrying a direct hyperlink and QR code linking to the named FindAGrave memorial page. The ledger is designed for use in the field: a visitor standing in Llandry Churchyard can scan any QR code and be taken directly to the full digital memorial for that individual, hosted permanently on People's Collection Wales as part of the national digital heritage record of Wales. Every entry has been individually verified. The ledger is updated as new memorials are confirmed.

This project was initiated in 2023 following a chance meeting with Declan Owens, Church Warden of Llandry. It was subsequently submitted to the Royal Commission on the Ancient and Historical Monuments of Wales, whose professionals formally endorsed it and added a permanent link from the Coflein entry for Llandry Church to the People's Collection Wales archive. The project represents the first time an independent community researcher's cemetery documentation has been added to the Coflein national database in this way.

*Compiled by Graham Tudor Emmanuel · Independent Heritage Researcher · Tudor59 · Kidwelly,
Carmarthenshire · 2026*

Coflein record: <https://coflein.gov.uk/en/sites/310153>

People's Collection Wales: <https://www.peoplescollection.wales/items/2061811>

TinyURL: <https://tinyurl.com/Llandry-Church-Memorials-2023>

Survey: <https://tinyurl.com/Llandry-Cemetery-Ledger-2026>

The Moment I Did Not Realise Had Happened

Llandry Church Cemetery and the Royal Commission on the Ancient and Historical Monuments of Wales

Graham Tudor Emmanuel

Independent Heritage Researcher | Kidwelly, Carmarthenshire, Wales | 2025

I have only recently understood the full significance of something that happened to me in 2023.

At the time it felt like a positive response to a piece of work I was proud of. A recognition. An encouraging email from a respected institution. I was pleased and I moved on to the next project.

It was only recently, in conversation, that someone helped me understand what had happened. What the email meant. What the archive meant. What the Coflein link meant. And why an academic who heard about it described it as unusual not as a polite understatement but as a precise and significant observation about how the heritage establishment in Wales normally operates.

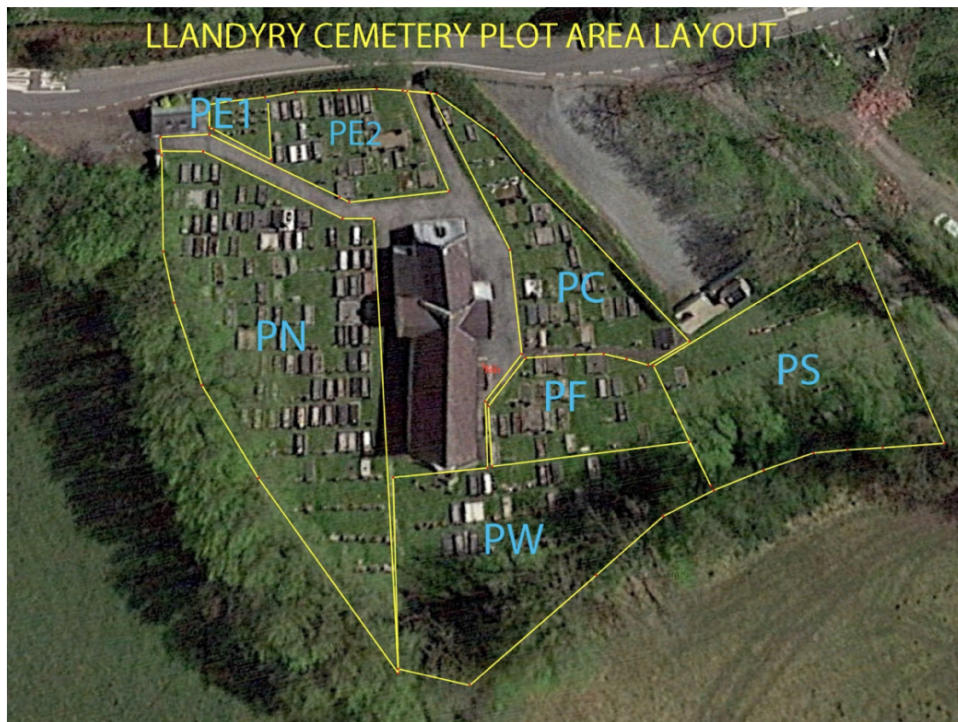
I want to set down what happened clearly, what it means and why it matters not just to me personally but to anyone who believes that good work speaks for itself regardless of who produces it.



The Llandyry Church Cemetery Project

Llandyry Church is a medieval parish church near Kidwelly in Carmarthenshire my home community, a place I know well and care about deeply. The church and its cemetery carry the heritage of generations of local families, their names and dates carved into stone, their stories largely undocumented and at risk of being lost entirely as the physical inscriptions weather and the living memory of those community's fades.

Llandyry Cemetery Memorial Plot Layout Location



I set out to create a comprehensive heritage record of the cemetery. Not a partial survey or a simple photographic record a complete documentation. Every grave recorded. GPS coordinates assigned to each location within the cemetery so that any individual grave could be navigated too precisely. Photographic documentation of every inscription. Biographical research where the historical record allowed it, connecting the names on the stones to the lives behind them.

The complete archive was hosted on People's Collection Wales the national digital heritage platform making it freely accessible to anyone in the world with an internet connection. An interactive map connected the physical cemetery to the digital record. The methodology combined GPS precision, photographic documentation, biographical research, and digital connectivity in a way that I had been developing through my work on the Fourth Generation Memorial Project.

I submitted the project to the Royal Commission on the Ancient and Historical Monuments of Wales.

The Royal Commission — What It Is and Why It Matters

The Royal Commission on the Ancient and Historical Monuments of Wales was established by Royal Warrant in 1908. Its purpose is to survey, record, publish and maintain the national archive and database of the archaeological, architectural, and historical heritage of Wales. It is the most authoritative heritage institution in the country.

Its national database is Coflein the definitive digital record of every architectural, archaeological, and historical site in Wales. When any archaeologist, planner, historian, academic or heritage officer in Wales needs authoritative information about a specific site, Coflein is where they go. It is the primary reference for the entire heritage establishment.

The resources linked from Coflein entries represent the most credible and most rigorously assessed heritage documentation available for each site. Typically, that means peer reviewed academic papers, university research projects, professional archaeological excavation reports and the Royal Commission's own survey work. The common thread is institutional authority work that has passed through formal professional or academic gatekeeping processes before being associated with the national record.

Independent researcher's individuals working without institutional affiliation, without peer review, without an academic post do not normally submit work to the Royal Commission's archive. The barriers are not written rules. They are professional norms so deeply embedded in the heritage establishment that most academics would not even think to question them. The assumption is simply that individual work does not reach the standard required for the national record.

The Response

The Royal Commission emailed me.

They told me that what I had produced had not been done before. They asked whether they could add it to their national archive. I signed permission. They included the work in the national heritage record and added a permanent link from the Coflein entry for Llandry Church directly to my archive on People's Collection Wales.

At the time I was pleased. I understood it as a recognition of good work. What I did not fully grasp was the specific weight of those words this has not been done before coming from an institution that has been building the national heritage record of Wales for over a century. Or the specific significance of a Coflein link for an independent researcher's work. Or what it meant that they came to me rather than me having to argue for inclusion.

I have understood it better since. I am writing this because I think it deserves to be properly recorded.

What It Actually Means

The Coflein link is a formal endorsement by the national heritage body of Wales. It is the Royal Commission saying to every researcher, archaeologist, planner, and historian who searches their national database for Llandry Church this resource is sufficiently accurate, sufficiently rigorous, and sufficiently valuable that we are directing you to it as part of the national record.

That link does not expire. It does not depend on my continued involvement or on any platform or service remaining active beyond People's Collection Wales itself which as the national digital heritage platform is as permanent as any digital resource in Wales can be. Every person who searches Coflein for Llandry Church from this point forward will find my work as a formally endorsed national heritage resource.

The academic who told me that this was unusual was being precise. In over a century of operation the Royal Commission has built its archive primarily from institutional and academic sources. The professional norms that kept independent researcher work out of the national record are real and longstanding. They were not suspended for me. My work met the standard that those norms exist to protect.

That is an entirely different thing from being given special treatment. The Royal Commission did not make an exception. They applied their standard, and the Llandry Church Cemetery project met it.

<https://tinyurl.com/Llandry-Church-Memorials-2023>

Why It Happened

I have thought about this carefully. I think it happened because of the combination of elements in the project rather than any single one of them.

The completeness. This was not a partial survey or a photographic record alone. It was a comprehensive documentation every grave, every inscription, every GPS coordinate, every biographical detail the record allowed. The Royal Commission's professionals could see immediately that no corners had been cut.

The methodology. The combination of GPS precision, photographic documentation, biographical research, and digital connectivity was genuinely new applied in this way to a parish cemetery. It produced a resource that could be used in the field, navigated to precisely, accessed remotely and updated as new information emerged.

The originality. Llandry Church cemetery had not been comprehensively documented before. The project added something genuinely new to the heritage record rather than duplicating what already existed. The Royal Commission exists to fill gaps in the national record. This was a gap filled.

The permanence. The archive on People's Collection Wales is not a temporary resource. It is permanently hosted on the national digital heritage platform, freely accessible, connected to an interactive map and navigable by GPS coordinates. The Royal Commission could link to it from Coflein with confidence that the link would remain meaningful.

Together those four elements produced something that the Royal Commission's own professionals' people who have spent their careers assessing heritage documentation looked at and concluded belonged in the national record.

<https://www.peoplescollection.wales/items/2061811>

The Realisation

When I finally understood all of this properly, I sat with it for a while.

I am a retired man from Kidwelly. I have no academic title. I have no institutional affiliation. I work alone at my own pace with my own resources following my own curiosity about the heritage of Wales. I did not approach the Royal Commission expecting to contribute to the national archive. I approached them because I had produced something I thought was worth sharing and because sharing heritage is what I do.

What I had not appreciated was that in doing the work as carefully and as completely as I knew how to without shortcuts, without compromises, with every element of the methodology applied as thoroughly as possible I had produced something that crossed a boundary that most independent researchers never cross.

The Llandyry Church Cemetery project is now permanently part of the national heritage record of Wales. My name is attached to it. The Royal Commission's endorsement of it is documented. The Coflein link is live.

That happened because of a quiet, careful, unhurried piece of work on a Carmarthenshire parish cemetery. Not a grand project. Not a nationally funded survey. One person doing one thing properly.

I think that is worth knowing about. Not because it reflects well on me though I am genuinely proud of it. But because it says something important about what the national heritage standard actually is and how accessible it is to anyone who is willing to meet it properly.

The work is in the national archive.

The link is live on Coflein.

<https://coflein.gov.uk/en/sites/310153>

The people of Llandyry are no longer just names on stones.

That is what the moment meant.

When I look back now, what strikes me most is how ordinary the work felt while I was doing it. There was no moment where I thought, *this will matter nationally*, or *this will change anything beyond this churchyard*. I was simply doing what felt right: honouring a place, honouring its people, and honouring the values that Linda taught me to carry into every piece of work I touch.

The significance came later. It arrived slowly, in conversations, in the realisation of what that Coflein link meant, and in the understanding that the Royal Commission had not just acknowledged the project they had trusted it. They had trusted *me*. And that trust was earned not through status or affiliation, but through care, precision, and persistence.

What I feel now is not pride in the sense of achievement, but pride in the sense of alignment. The work reflects who I am and what I believe: that heritage belongs to everyone; that stories deserve to be kept safe; that dignity can be restored with patience and attention; that one person, working quietly, can still make something permanent.

I did not set out to cross a boundary in Welsh heritage practice. I set out to record a cemetery. But in doing so, I crossed a boundary within myself. I learned that the work I do small, local, careful can stand alongside the work of institutions that have shaped the national record for more than a century. I learned that kindness and rigour are not opposites. And I learned that the most meaningful contributions often begin with a simple act of noticing.

The Llandyry Church Cemetery project will outlive me. That is a strange and humbling thought. But it is also a comforting one. Because it means that the people of Llandyry, whose names I traced with my fingertips and whose stories I pieced together from fragments, will not be lost again. And perhaps that is the quiet truth at the heart of all this: I thought I was preserving their memory, but in the end, they have helped preserve mine.

Graham Tudor Emmanuel

Independent Heritage Researcher

Kidwelly, Carmarthenshire, Wales

People's Collection Wales: Tudor59 | 2026

Llandyry Church Cemetery, Trimsaran

Across Three Centuries

A Fourth Generation Memorial Project Analysis

By Graham Tudor Emmanuel

*Tudor59 · People's Collection Wales
Kidwelly, Carmarthenshire*

Based on the complete FindAGrave record · 804 memorials · 1 May 2026

Vivit Post Funera Virtus — Virtue Lives On After Death

Introduction

Llandyry Church Cemetery stands in the parish of Llandyry, Carmarthenshire, and holds the memory of 804 individuals whose lives touched this corner of west Wales across more than two centuries. This analysis, drawn from the complete FindAGrave memorial record as compiled and verified by Graham Tudor Emmanuel (Tudor59) under the Fourth Generation Memorial Project methodology, offers the first comprehensive demographic overview of the churchyard's buried population.

The data reveals not just names and dates, but the ebb and flow of a rural Welsh parish through industrialisation, two world wars, post-war change, and into the twenty-first century. The 832 index entries — accounting for some individuals with multiple records — yield 815 datable deaths, 745 confirmed ages at death, and 159 distinct surnames across a span of over 220 years.

The analysis that follows draws on verified data from the master cemetery index and is presented in six historical parts, followed by a full statistical summary. Where figures have been independently counted from the index, they supersede any earlier estimates.

Part One: The Deep Past (1860s–1899)

A Single Voice from the Eighteenth Century

The oldest recorded burial in Llandyry is Robert John, who died in 1801. His grave (Plot PE2-A3) stands entirely alone from that era — a reminder that while the church itself is considerably older, systematic memorial recording begins only at the dawn of the Victorian age.

The Victorian Parish

From the 1860s onward, the record begins to thicken. The surviving burials from the nineteenth century number approximately 39, concentrated in the older sections of the churchyard — the Carpark area, East 2, and Carpark F plots — which represent the earliest surviving headstones.

The dominant families of this era are the **Williams, Thomas, John, Jones** and **Charles** families — the classic Welsh patronymic surnames that had shaped the parish for generations. Seven Williams burials are recorded before 1900, alongside five Thomas burials and five John family burials.

Infant mortality is unmistakably visible in the Victorian record. Margaret Bevan died aged just two in 1877; several infant graves from this decade carry the heartbreaking notation of days or months rather than years. The mean age

at death for adults in the 1870s was 57, and in the 1880s fell to just 46 — reflecting the harsh realities of pre-modern rural life.

“Llandyry in the 1890s was a working parish of farmers, labourers, and chapelgoers. The churchyard reflects that world honestly.”

Part Two: The Edwardian Surge (1900–1919)

A Parish Enters the New Century

The first two decades of the twentieth century saw a marked increase in recorded burials, with 29 deaths in the 1900s and 31 in the 1910s. This rise reflects both better record-keeping and the first visible impact of industrial illness: many men worked in coal mining and heavy industry, and lung disease began appearing in death records.

Decade	Burials	Mean Age at Death (adults)
1900s	29	48.3
1910s	31	49.4

The First World War

Llandyry did not escape the Great War. Graves from 1915–1918 bear witness to the conflict, including William John Babbage (d. 24 October 1917), Llewellyn Bevan (d. 9 November 1915), and David Ernest Williams (d. 1916). These men are buried at home, not in French or Belgian war cemeteries — their deaths from wounds, illness, or after repatriation mark them as a distinct and poignant category within the ledger.

“The ledger contains no official war graves in the Commonwealth sense, but the casualties of war are unmistakably present in Llandyry’s soil.”

Part Three: Between the Wars (1920–1939)

A Decade of Acceleration

The interwar period saw a sharp acceleration in burial numbers. The 1920s recorded 23 burials, but the 1930s saw that figure more than double to 58 — one of the highest single-decade counts in the entire ledger. Several factors converged to drive this increase.

The Spanish flu epidemic of 1918–1919 left long-term health consequences that claimed lives into the 1920s. Industrial disease — particularly lung conditions associated with coal mining — was peaking in the working generation. The economic depression of the 1930s reduced access to healthcare and adequate nutrition. And the large generation born in the 1850s and 1860s was now reaching the end of their lives.

Decade	Burials	Mean Age at Death (adults)
1920s	23	56.2
1930s	58	60.2

Families at Their Largest

This period sees the greatest concentration of burials for the parish’s most established families. The 1930s alone account for 13 burials in a single year (1934) — the joint busiest year in the Victorian-to-interwar period. The Jones, Williams, Lloyd, and Phillips families all have significant clusters in this era.

“The Llandyry of the 1930s was a crowded churchyard — literally and demographically.”

Part Four: War and Post-War (1940–1969)

The Mid-Century Era

The three decades from 1940 to 1969 account for 220 burials — more than a quarter of the entire ledger. This sustained high rate reflects WWII deaths and their aftermath, the natural ageing of the large generation born in the 1880s and 1890s, and the continued toll of industrial disease in a community with deep ties to coal and heavy industry.

Decade	Burials	Mean Age at Death (adults)
1940s	71	59.3
1950s	66	64.0
1960s	83	68.9

The 1960s, with 83 burials, was the busiest decade of this era. Mean adult age at death rose steadily through these thirty years — from 59.3 in the 1940s to 68.9 in the 1960s — reflecting improving healthcare and living standards in post-war Wales.

New Surnames Arrive

The mid-century also sees the first appearance of non-Welsh surnames in the ledger, reflecting migration into the area in the wake of wartime dispersal and post-war economic movement. These include Cybulski (Polish), Tartaglia and De Giorgi (Italian), and O'Malley and O'Shea (Irish). Their presence marks Llandyry's quiet transition into a more diverse community, even in a rural Welsh parish.

“Llandyry's churchyard tells the story of west Wales becoming more diverse — one headstone at a time.”

Part Five: The Long Plateau (1970–1999)

Sustained High Numbers

Contrary to what might be expected, burial numbers did not fall significantly from the 1970s. The three decades from 1970 to 1999 account for 244 burials — second only to the mid-century era in total volume. The rise of cremation, which might have been expected to reduce churchyard burials, had a slower impact in this rural Welsh community than in urban centres.

Decade	Burials	Mean Age at Death (adults)
1970s	76	66.4
1980s	77	64.6
1990s	91	70.8

The 1990s were in fact the second-busiest decade in the entire ledger with 91 burials, and mean adult age at death reached 70.8 years — reflecting the significant improvements in longevity that came with NHS healthcare and better living standards through the latter half of the century.

The Last of the Great Welsh Families

The late twentieth century sees the final burials of several long-established Llandyry families. The Babbage line ends in 1958. The Bevans have their last recorded burial in 1997. The Liley family, which had roots going back to 1907, closes with Janet Liley in 1955. Yet for the truly deep-rooted families — Williams, Jones, Davies — burials continue right through to the present century.

Part Six: The New Century (2000–2026)

A Surprising Peak

The most striking finding from the verified data is that the 2000s — with 100 burials — are the single busiest decade in the entire ledger. This may reflect the bulge of a generation born in the 1920s and 1930s now reaching the end of their lives, combined with a community that has retained its preference for traditional burial over cremation longer than many comparable areas.

Decade	Burials	Mean Age at Death (adults)
2000s	100	72.8
2010s	58	75.5
2020s (partial)	13	72.4

The 2010s saw a genuine decline to 58 burials, and the current decade is on course for fewer still. Mean age at death in the 2010s reached 75.5 years — the highest of any decade in the ledger’s history. Recent graves include Angela Pritchard Arnold (d. 2022) and Iris Carrick Emmanuel (d. 2022), maintaining the Emmanuel family’s extraordinary 117-year presence in this churchyard.

“At the current rate, Llandyry Churchyard may see fewer than 30 burials per decade moving forward — a profound shift from its mid-century and millennial peaks.”

Part Seven: The Statistical Picture

Burials Per Decade

Decade	Burials	Decade	Burials
1860s	1	1940s	71
1870s	10	1950s	66
1880s	13	1960s	83
1890s	15	1970s	76
1900s	29	1980s	77
1910s	31	1990s	91
1920s	23	2000s	100
1930s	58	2010s	58
		2020s	13 (partial)

The Longevity Revolution

One of the most striking findings from the data is the dramatic improvement in longevity over the ledger’s span. Adults buried at Llandyry before 1950 died at a mean age of 56.1 years. Those buried after 1950 died at a mean age of 69.3 years — an improvement of more than thirteen years in a single generation.

Period	Mean Age at Death (Adults 18+)	Sample Size
Pre-1950	56.1 years	197 individuals
Post-1950	69.3 years	535 individuals
Improvement	+13.2 years	—

The Oldest in the Churchyard

Twenty-nine individuals in the ledger reached the age of 90 or beyond. The oldest is Iris Millicent (Milly) Hurlston, who died in 2015 aged 98. Close behind are Alice Marguerite Rowlands (96, d.1987), Sarah Ann Rogers (95, d.1989), Norah Kathleen McKibbin (95, d.2018), and Lily May Kirby (95, d.2010).

Name	Age	Year of Death
Iris Millicent (Milly) Hurlston	98	2015
Alice Marguerite Rowlands	96	1987
Sarah Ann Rogers	95	1989
Norah Kathleen McKibbin	95	2018
Lily May Kirby	95	2010
Edith Eirwen (Lockett) Gravell	95	2021
Sarah Glenys O’Malley	94	2016
Olive Megan (Williams) Anderson	94	2016
Mary Ann Bowen	94	1976
Irene Parry	94	2006

The Youngest — Infant and Child Deaths

Approximately 41 entries in the index record deaths in infancy or childhood — 30 carrying the notation of months, days, weeks, stillborn, or infant, and a further 11 with a confirmed numeric age below 16. These represent some of the most poignant entries in the ledger.

The youngest named burials include Charlitte Ivorine Emmanuel (6 months, d.1916), Ivor Owen Bonnell (8 days, d.1901), and several children recorded only in days. As the decades progress, child deaths become increasingly rare — a direct reflection of improved healthcare, vaccination, and infant nutrition.

The Dominant Families: Corrected Counts

The following counts are drawn directly from the verified master index and supersede any earlier estimates. Williams is by some margin the most represented surname in the churchyard, with 102 entries — nearly twice the nearest rival.

Surname	Burials	Surname	Burials
Williams	102	Morgan	18
Davies	46	James	15
Jones	37	John	15
Lloyd	35	Bowen	14
Rees	35	David	14
Griffiths	26	Jenkins	13

Surname	Burials	Surname	Burials
Phillips	23	Emmanuel	8
Thomas	22	Babbage	5
Evans	20	—	—

These fifteen families account for well over half of all burials in Llandry Churchyard. In total, 159 distinct surnames appear in the ledger, of which 46 appear only once — single-burial families whose connection to Llandry was brief or whose descendants moved away.

Family Continuity: The Long Presence

Some families maintained a presence in this churchyard across extraordinary spans of time. The Williams family — by far the most numerous — spans 146 years from Ann Williams in 1872 to an entry in 2018. The Thomas family spans 143 years; the Lewis family 138 years. Even the compiler's own Emmanuel family spans 117 years, from William John Emmanuel in 1905 to Iris Carrick Emmanuel in 2022.

Family	First Burial	Last Burial	Span (years)	Total Burials
Williams	1872	2018	146	102
Thomas	1879	2022	143	22
Lewis	1863	2001	138	7
Jones	1886	2017	131	37
Rees	1890	2015	125	35
Davies	1897	2019	122	46
Emmanuel	1905	2022	117	8
Phillips	1882	1995	113	23
Morgan	1893	2005	112	18

The Churchyard in Space: Burials by Section

The physical geography of Llandry Churchyard reflects its history. The North section, with 319 burials (38.3%), is the largest area by far and the primary burial ground of the twentieth century. The older Carpark and East 2 sections hold 143 and 103 entries respectively, representing the Victorian and Edwardian eras. The newer South section (136 burials) and West section (91 burials) reflect mid-to-late twentieth century expansion. East 1, with just 19 entries, is the most recent section. A further 20 individuals cannot be precisely located.

Section	Burials	Percentage	Era
North	319	38.3%	20th century main ground
Carpark / Old sections	143	17.2%	Victorian & Edwardian
South	136	16.3%	Mid-late 20th century
East 2 (older)	103	12.4%	Victorian & early 20th
West	91	10.9%	Mid-late 20th century
Location not known	20	2.4%	Various
East 1 (newer)	19	2.3%	Late 20th – present

Notable Clusters: Years of Multiple Loss

The year 2000 stands as the single busiest year in the ledger's history, with 19 burials — likely reflecting the end of life for a large generation born in the 1910s and 1920s. Other notably busy years include 1965 and 1987 (14 burials

each), and 1934 (13 burials). In some years, multiple members of the same family were buried — suggesting shared illness, the death of elderly couples in quick succession, or the loss of siblings in the same period.

Conclusion: A Living Ledger

Llandyry Churchyard is not a museum. It remains an active burial ground, with entries continuing into the 2020s. The data tells a clear and compelling story across more than two centuries of Welsh parish life.

Mean adult age at death has risen from 56 years before 1950 to over 75 years in the 2010s — a transformation driven by the NHS, improved nutrition, and the decline of industrial disease. Infant mortality, once a visible and tragic presence in every decade, has all but disappeared from the modern record. The parish has grown more diverse, with surnames from Poland, Italy, and Ireland woven into the fabric of what was once an entirely Welsh-speaking community.

The Williams family has buried 102 of its members here across 146 years. The Emmanuel family — the compiler's own — stretches from 1905 to 2022. These are not just statistics. They are the accumulated weight of human lives: every one of them, at some point, occupying a seat in the church, walking the lanes of Llandyry, and now lying within sight of the tower.

Every name in this ledger — from Robert John (1801) to Mary P Gardner James (2017) — was somebody's world.

Vivit Post Funera Virtus — Virtue Lives On After Death

Graham Tudor Emmanuel · Tudor59 · People's Collection Wales · Kidwelly, Carmarthenshire

Llandyry Church Cemetery, Trimsaran

Cleaned Master Index — 834 entries

FindAGrave Memorials — 804

Anomalies resolved | Confirmed duplicates removed | Verify entries retained pending stone check

Recorded by Graham Tudor Emmanuel | Kidwelly, Carmarthenshire

Section	Surname	Forenames	Year	Age
Pinged East 2 E 8	Anderson	August Alexander (Gus)	2012	92
Pinged East 2 E 8	Anderson	Olive Megan (Williams)	2016	94
Pinged East 2 D 1	Anthony	David	1880	6 mths
Pinged East 2 D 1	Anthony	Mary	1884	29
Pinged East 2 D 1	Anthony	Mary	1901	17
Pinged South B 8	Arnold	Angela Pritchard	2022	63
Pinged North P 3	Aubrey	Harold Thomas	1961	51
PF-D1	Babbage	Charles Edward	1958	49
PF-D1	Babbage	Christopher Emmanuel George	1936	83
PF-D1	Babbage	Jessie	1919	39
PF-D1	Babbage	Rose Hannah	1938	73
PF-D1	Babbage	William John	1917	30
Pinged North M 1	Bailey	Elizabeth Ann (Bessie)	1958	51
Pinged North M 1	Bailey	William John (Bill)	1990	87
Pinged West D 3	Barnes	Sidney	1981	47
PF-B8	Bayliss	Benjamin	1919	52
PF-B8	Bayliss	Thirza	1940	75
Pinged South B 13	Beer	Gertie	1998	92
Pinged North N 6	Benet	David P.	1965	77
Pinged North N 6	Benet	Rose	1933	46
Pinged North N 6	Benet	Gwilym	1937	18
Pinged North K 11	Bevan	Peter	1997	62
Pinged North N 3	Bevan	Jack Llewellyn	1925	4
Not known	Bevan	Llewellyn	1915	33
Pinged North N 3	Bevan	Thomas	1947	74
Pinged North N 3	Bevan	Agnes Langdon	1974	76
Pinged East 2 D 3	Bevan	Margaret	1877	2
Pinged East 2 D 4	Bevan	Llewellyn	1915	77
Pinged East 2 D 4	Bevan	Margaret	1925	85
Pinged East 2 D 3	Bevan	Llewellyn	1882	8 dys
Pinged North L 2	Beynon	William John		
Pinged North L 2	Beynon	Sarah Ann	1976	76
Pinged Carpark F 3	Beynon	Elizabeth (Gwynne)	1927	36
Pinged North D 6	Beynon	Elizabeth Irene	1979	57
Pinged North D 6	Beynon	Thomas Anthony	2006	83
Pinged North L 2	Beynon	William Harry	1959	61
Pinged North G 7	Biggs	Richard George	1951	66
Pinged North G 7	Biggs	Florence Ellen	1968	86
Pinged Carpark A 9	Bird	Jackie		
Pinged Carpark A 9	Bird	Lilian	1975	65
Pinged West C 5	Blenkinsop	James	1969	52

Section	Surname	Forenames	Year	Age
Pinged West C 5	Blenkinsop	Doreen	2006	85
Pinged North I 3	Bonnell	David	1987	61
Pinged Carpark A 5	Bonnell	Ivor Owen	1901	8 dys
Pinged Carpark A 5	Bonnell	Margaret (Lewis)	1934	68
Pinged Carpark A 5	Bonnell	David	1936	78
Pinged Carpark A 5	Bonnell	David Thomas	1961	66
Pinged South D 16	Bonnell	John Hugh	2011	85
Pinged North A 1	Bourke	Patrick (Pat)	2017	70
PF-A5	Bourke	Venus Vera (Vinnie)	1961	48
PF-A5	Bourke	William Joseph	1972	66
Pinged North H 10	Bowen	James	1949	25
Pinged North I 9	Bowen	David John	1948	32
PE1-A2	Bowen	Ian	2009	85
Pinged North I 9	Bowen	Willie	1967	50
Pinged East 1 A 2	Bowen	Catherine Madge	2004	76
Pinged East 1 A 2	Bowen	Ian	2009	85
Pinged East 1 A 2	Bowen	Michael	2012	60
Pinged South A 12	Bowen	Ivy Elizabeth	1988	67
PF-A11	Bowen	John Griffith	1938	65
Pinged South A 12	Bowen	Sidney Lewis	1993	74
Pinged South C 11	Bowen	Thomas Edwin	2000	76
Pinged North I 9	Bowen	Isaac	1954	71
Pinged North I 9	Bowen	Mary Ann	1976	94
Pinged South C 11	Bowen	Phyllis Margaret	2002	75
Pinged North D 7	Bridgewater	Joseph Henry (Harry)	1980	
Pinged North D 7	Bridgewater	Vera Doreen	1982	
Pinged South D 15	Brookes	Granville	1980	50
Pinged South D 15	Brookes	Elizabeth Rose	2002	81
Pinged North C 3	Bunyan	Wayne	1989	20
Pinged South B 2	Butterfill	Arthur Vernon Henry	1998	76
Pinged South C 13	Calford	Vincent Leslie	2001	52
Pinged North N 2	Charles	Stephen Wynn	1987	61
Pinged North N 2	Charles	Gweneira	1990	63
Pinged North N 2	Charles	Wendy	1960	14
Pinged North N 5	Charles	Evan Cyril	1973	56
Pinged North N 5	Charles	Margaret (Peggy)	2013	93
Pinged Carpark A 2	Charles	Peter	1896	62
Pinged Carpark A 2	Charles	Ann	1898	65
Pinged Carpark J 1	Charles	Mary	1887	69
Pinged East 1 B 4	Collick	Patricia	1992	48
Pinged East 1 B 4	Collick	John Joseph	2020	85
Pinged South A 1	Congdon	Gloria Rose	1992	66
Pinged South A 18	Congdon	John Henry	1987	62
Pinged North C 7	Cooper	Betty	1984	50
Pinged North C 7	Cooper	Thomas Henry	2005	74
Pinged East 1 C 1	Cunningham	Alexander John	1995	76
Pinged North J 4	Cunnington	Wilfred Courtney (Sgt)	1938	29
Pinged North J 4	Cunnington	George S.	1953	77
Pinged North J 4	Cunnington	Annie	1969	90
Pinged North J 4	Kirby	Lily May	2010	95

Section	Surname	Forenames	Year	Age
Pinged West D 17	Cybulski	Margaret Marlene	1947	12 mths
Pinged West D 17	Cybulski	Wladyslaw	2000	79
Pinged North B 2	Daniel	Bronwen	1987	61
Pinged North B 2	Daniel	Melville	2003	79
Pinged North G 1	Daniels	John	1951	77
Pinged North G 1	Daniels	Mary	1963	85
Pinged West B 4	Daniels	William John	1974	69
Pinged West B 4	Daniels	David Thomas	1978	72
Pinged West B 5	Daniels	Margaret Reynolds	1974	55
Pinged West B 8	Daniels	Helen	1972	
Pinged West B 9	Daniels	Idris	1972	22
Pinged West B 9	Daniels	Einon M.	1993	80
Pinged West D 7	Dark	Ernest Edward Andrew	1968	58
Pinged West D 7	Dark	Harriet James	1978	67
Pinged North M 1	David	Ann Lloyd	1908	21
Pinged North M 2	David	Kate (Katie)	1955	56
PN-G3	David	Latitia Jones	1953	67
PC-C6	David	Mary	1948	68
Pinged North M 2	David	Philip	1931	85
Pinged East 2 B 5	David	Ann Phillips	1930	73
Pinged East 2 C 2	David	David	1878	21
PN-G3	David	David Dafydd	1949	65
Pinged East 2 C 2	David	Thomas	1889	22
Not known	David	William	1945	85
Pinged East 2 C 2	David	Elizabeth Erasmus	1911	84
PN-H4	David	Gwilym	1945	56
Pinged Carpark C 6	David	Joseph	1932	54
Pinged Carpark C 6	David	Mary	1948	68
Pinged North B 4	Davies	Daniel Eiros	2009	76
Pinged North E 1	Davies	William John	1965	56
Pinged North E 1	Davies	Esther May	2001	84
Pinged North E 1	Davies	Edward John	1990	54
Pinged North E 3	Davies	Nellie Franklin	1968	72
Pinged North F 1	Davies	Robert John	1958	
Pinged North F 1	Davies	Dorothy	2004	75
Pinged North F 10	Davies	Glenys	1964	44
Pinged North F 10	Davies	Alan	1981	63
Pinged North H 3	Davies	Daniel John	1985	80
PE2-D8	Davies	David	1923	71
Pinged North H 3	Davies	Annie Elizabeth	1998	82
Pinged North H 4	Davies	Edith	1974	87
Pinged North H 4	Davies	Gwilym	1946	57
Pinged North H 8	Davies	Anne	1949	4 ¹ / ₂ mths
Pinged North I 5	Davies	Thomas Brinley	1999	82
Pinged North I 5	Davies	Elizabeth Muriel	2000	81
Pinged North I 6	Davies	Allan Dudley	1944	
Pinged North I 7	Davies	Frances Williams	1944	77
Pinged North I 7	Davies	Mary	1961	72
Not known	Davies	Bessie Annetta Jones	1934	19

Section	Surname	Forenames	Year	Age
Pinged North I 7	Davies	Blodwen	1978	76
Pinged North L 5	Davies	Kenneth	1969	51
Pinged North L 5	Davies	Ivy Maud	1998	78
Pinged North L 5	Davies	Richard	1923	64
Pinged North L 6	Davies	Morgan William	1923	34
Pinged North L 6	Davies	Margaret	1978	85
Pinged North N 4	Davies	John	1952	77
Pinged North N 4	Davies	Mary Ann	1933	50
Pinged North N 4	Davies	Gwendoline	1955	45
Pinged North N 4	Davies	Evan Henry	1928	10
Pinged East 1 A 1	Davies	Dewi	2004	80
Pinged East 1 A 1	Davies	Blodwen	2019	93
Pinged East 2 C 1	Davies	Eliza (Phillips)	1900	23
Pinged East 2 C 7	Davies	Bessie Annetta (Davies)	1942	33
Pinged East 2 D 8	Davies	Mary	1897	41
Pinged East 2 D 8	Davies	Daniel	1923	71
Pinged East 2 E 4	Davies	Mary Ann	1965	84
Pinged Carpark F 1	Davies	Joyce	1897	35
Pinged Carpark F 1	Davies	John	1935	69
Pinged Carpark F 1	Davies	Thomas	1899	
Pinged South C 7	Davies	Margaret Ray	2000	72
Pinged South C 7	Davies	Spencer	2000	85
Pinged West B 1	Davies	Margaret Rose	2014	69
Pinged West B 12	Davies	Sarah Louise	2012	stillborn
Pinged West C 1	Davies	Hugh John	1991	45
Pinged West D 10	Deasy	Dennis	1960	85
Pinged West D 10	Deasy	Harriet	1967	80
Pinged West D 10	Deasy	Denis	1988	65
Pinged West D 10	Deasy	Joyce Elizabeth	2015	78
Pinged East 2 E 8	Delfryn	Roger	1985	59
Pinged South C 10	Downs	Pamela	2000	54
Pinged West C 5	Drew	Mary Jane	1968	81
Pinged South D 13	Duffy	Anthony Francis	2009	78
Pinged North E 6	Dunn	Joseph	1971	49
Pinged North E 6	Dunn	Jean Alvina	1988	63
PS-B11	Edwards	Andrea Glynis Hurley	2011	54
Pinged North E 8	Edwards	Reginald Rowland	1999	78
Pinged North H 7	Edwards	Samuel	1948	54
Pinged North H 7	Edwards	Annie	1960	59
Pinged West B 10	Edwards	James Cyril (Jim)	1971	45
Pinged West B 10	Edwards	Gwyneth Viola	2013	81
Pinged West D 1	Edwards	Jason Mark	1993	22
Pinged West D 11	Edwards	Edith May	1953	59
Pinged West D 11	Edwards	William	1960	70
Pinged North K 12	Emanuel	Brian Idris	2016	65
Pinged Carpark I 2	Emmanuel	William John	1905	3
Pinged Carpark I 2	Emmanuel	Charlitta Ivorine	1916	6 mths
Pinged Carpark I 2	Emmanuel	Catherine (Katie)	1917	4
Pinged South E 17	Emmanuel	Iris (Carrick)	2022	59
Not known	Emmanuel	Rees	1965	87

Section	Surname	Forenames	Year	Age
Pinged West D 13	Emmanuel	Robert	1953	2 mths
Not known	Emmanuel	Lettice Williams	1965	88
Pinged West C 7	Emmanuel	Lucy Elizabeth Pritchard	1988	58
Pinged North C 4	Evans	Jay	1983	infant
Pinged North C 4	Evans	Thomas James	2005	71
Pinged North I 6	Evans	Dwyfor L.	2007	57
Pinged North J 10	Evans	Esme Irene Griffiths King	1980	54
Pinged North J 10	Evans	Dennis John	2012	88
Pinged North J 10	Evans	Verona	1950	3 mths
Pinged North L 1	Evans	Emily	1957	70
Pinged North L 1	Evans	Morris John	1960	67
Pinged East 1 A 3	Evans	Ieuan John	2002	52
Pinged East 2 B 6	Evans	Frank	1951	58
Pinged East 2 B 6	Evans	Annie Catherine	1975	73
Pinged Carpark A 1	Evans	Ann	1953	70
Pinged Carpark A 1	Evans	Robert	1964	81
Pinged Carpark A 1	Evans	Mary Jane	1958	51
Pinged Carpark F 2	Evans	Mary		
Pinged South C 3	Evans	Gwyneth	1999	78
Pinged South C 3	Evans	Vivian	2000	84
Pinged South D 11	Evans	Roy	2008	75
Pinged West A 4	Evans	Stephen Michael	1976	5 mths
Not known	Evans	Stephen Michael	2005	6 mths
PN-L2	Eynon	Sarah Ann Daniels	1976	86
PN-L2	Eynon	William Harry	1959	61
PN-L2	Eynon	William John		
Pinged North F 5	Eynon	Gwyneth Mary	1960	37
Pinged South A 9	Ford	Arthur	1989	60
Not known	Ford	Dorothy	2017	
Pinged East 2 B 6	Foy	Frederick George	1990	80
Pinged East 2 B 6	Foy	Nina Marian	2014	86
Pinged East 2 B 7	Francis	Samuel	1900	35
Pinged East 2 B 7	Francis	Thomas	1911	19
Pinged East 2 B 7	Francis	Mary	1911	27
Pinged North I 8	Frater	Dulcie Maud	1945	25
Pinged North I 8	Frater	David Charles	1990	73
Not known	Frater	David Charles	1985	65
Pinged North I 8	Frater	Joyce	1993	72
Pinged North I 8	Frater	Clive	2021	87
Pinged South C 2	Frater	Arthur E.	1999	63
Pinged South C 2	Frater	Marlene	2013	75
Pinged West C 8	Frater	Edward	1957	68
Pinged West C 8	Frater	Elizabeth Lewis	1963	68
Pinged West C 8	Frater	Leonard	1943	
Pinged West D 2	Frater	Dorothy Gertrude	1985	63
Pinged West D 2	Frater	Oliver Frederick	1986	71
Pinged East 2 E 10	Gavin	Annie	1906	
Pinged South B 10	Gay	John Herbert	1994	79
Pinged South B 10	Gay	Sarah Anne	2002	82

Section	Surname	Forenames	Year	Age
Pinged East 2 E 5	George	Stephen Mark	1972	
Pinged West B 3	Giorgi	Salvatore De	1978	60
Pinged West B 3	Giorgi	Irma De	2002	78
Pinged Carpark B 2	Gower	John	1977	79
Pinged Carpark B 2	Gower	Elizabeth Ann	1987	88
Not known	Gravell	Daniel	1995	86
Pinged North B 2	Gravell	Joseph (Jaff)	1994	77
Pinged North F 8	Gravell	David John	1962	66
Pinged North F 8	Gravell	Elizabeth	1972	75
Pinged North F 8	Gravell	Cecil	1986	64
Pinged North B 2	Gravell	Edith Eirwen (Luckett)	2021	95
Pinged Carpark C 4	Gravell	Lizzie Mary (Lloyd)	1982	73
Pinged Carpark C 4	Gravell	Myra	2008	76
Pinged South B 7	Gravell	David James	1995	31
Pinged South B 7	Gravell	William John	2005	69
Pinged North H 6	Gravelle	Adele Mary Delphine	1965	14½
Pinged North H 6	Gravelle	Paul Wayne		infant
Pinged North H 6	Gravelle	Annie	1986	74
Pinged North H 6	Gravelle	Stanley	1987	73
Pinged North D 9	Green	John Richard	1980	84
Pinged North D 9	Green	Elsie Millicent	1994	92
Pinged North D 10	Green	Marian (Lloyd)	1995	75
Pinged North D 10	Green	Bernard Richard	2009	89
Pinged North M 6	Green	Elizabeth	1914	52
Pinged North M 6	Green	W. J.	1923	
Pinged North G 6	Griffiths	Samuel	1952	65
Pinged North G 6	Griffiths	Esther	1950	65
Pinged North G 6	Griffiths	Benjamin	1983	73
Pinged North G 6	Griffiths	Daniel Tom	1989	72
Pinged North H 3	Griffiths	Mary	1946	83
Pinged North I 6	Griffiths	Jemima	1973	79
Pinged North J 1	Griffiths	John Henry	1960	69
Pinged North J 1	Griffiths	Mary	1975	83
Pinged North K 1	Griffiths	Llewellyn Owen	1932	
Pinged North K 1	Griffiths	Annie Mary	1975	
Pinged North K 1	Griffiths	Margaret Edith	1997	78
Pinged North N 8	Griffiths	Annie Letitia	1934	14
Pinged North N 8	Griffiths	Edward	1959	70
PN-A3	Griffiths	Beryl	1940	23
Pinged North N 8	Griffiths	Catherine	1969	79
Pinged Carpark A 10	Griffiths	Robert Bryan	1983	19
Pinged Carpark A 10	Griffiths	Paul Anthony	2016	50
Pinged South A 6	Griffiths	Emrys	1989	65
PN-A3	Griffiths	Eliza	1968	83
Pinged South A 11	Griffiths	Anne E. C.	1989	65
Pinged South A 11	Griffiths	Melvin	2004	83
Pinged South A 11	Griffiths	Peter John	2002	53
Pinged South A 15	Griffiths	Olive Grace	1987	76
Pinged North I 6	Griffiths	Henry T.	1977	82

Section	Surname	Forenames	Year	Age
PW-B12	Griffiths	Peter Lynford	2011	71
PF-A3	Griffiths	Stanley	1968	86
Pinged South B 14	Guest	Kenneth Phillip	1993	40
PW-C9	Guest	Brynley Howard	1984	64
Pinged West C 9	Guest	Mary	1981	60
PW-C9	Guest	Michael Joseph Howard	1954	2
Pinged Carpark F 3	Gwynne	William	1908	44
Pinged Carpark F 3	Gwynne	Bridget	1945	78
Pinged North J 6	Hackford	Ernest	1939	57
Pinged North J 6	Hackford	Jane Jones	1955	77
Pinged North K 8	Hancock	Nathaniel	1937	59
Pinged North K 8	Hancock	Richard George	1942	34
Pinged North K 11	Hancock	John Thomas (Jack)	1965	58
Pinged North K 11	Hancock	Gladys (Griffiths)	1970	64
Pinged North K 11	Hancock	James Nathaniel (Jimmy)	2001	64
Pinged North K 12	Hancock	Edward (Eddy)	1985	72
Pinged South B 1	Hancock	Catherine Letitia	1998	67
PN-K11	Hancock	Peter Bevan	1997	62
Pinged South B 1	Hancock	Ronald Dunn	2021	93
Pinged North K 8	Hancock	Eliza John	1955	76
Pinged North K 12	Hancock	Joan Kathleen (Sally) Prior	2011	88
PF-C9	Harries	Rev Daniel	1930	42
PF-C7	Harries	David	1930	52
Pinged East 2 C 6	Harries	Ivor Tudor	1969	75
Pinged East 2 C 6	Harries	Sarah Anne	1938	85
PF-C7	Harries	Margaret	1916	33
Not known	Harries	Mary Ann	1970	81
Not known	Harries	William	1959	69
PF-C8	Harry	Annie	1910	46
PF-C8	Harry	William David	1932	78
Pinged West A 7	Havard	Kay	1975	36
Pinged West A 7	Havard	John Edward	2000	71
Pinged North D 4	Herdman	Harry	1977	62
Pinged North D 4	Herdman	Sarah Glenys	1997	79
Pinged West A 4	Hill	Alan G.	1992	69
Pinged South A 2	Hobby	Hubert Raymond	1991	70
Pinged South A 2	Hobby	Margaret Ethel	2008	85
Pinged West C 9	Howard	Brynley	1984	64
Pinged West C 9	Howard	Michael Joseph	1954	
Pinged Carpark H 2	Howells	William	1906	24
Pinged Carpark H 2	Howells	Ann	1956	73
Pinged South C 17	Howells	William Mervyn	2001	90
PC-H1	Howells	Ann (Williams)	1951	68
Pinged South C 17	Howells	Nancy	2008	91
Pinged North O 6	Hughes	Catherine	1933	38
Pinged North O 6	Hughes	John Esiah	1952	55
Pinged North O 6	Hughes	John Lloyd	1938	8
Pinged North O 6	Hughes	Gwyn Mostyn	1938	
Pinged North P 1	Hughes	James	1946	72
Pinged North P 1	Hughes	Maggie	1985	84

Section	Surname	Forenames	Year	Age
Pinged North P 1	Hughes	Margaret	1931	60
Pinged South B 11	Hurley	William Daniel	1994	59
Pinged South B 11	Hurley	Mary Teresa	2005	67
Pinged South C 6	Hurley	Michael John	1999	73
PF-A10	Hurley	Brian Idris		INF
Pinged South C 6	Hurley	Catherine Mary (Anthony)	2009	80
PF-A10	Hurley	Susan	1940	37
Pinged South E 8	Hurley	Thomas Denzil	2016	67
Pinged South A 17	Hurlston	Herbert Henry	1987	73
Pinged South A 17	Hurlston	Iris Millicent (Milly)	2015	98
Pinged East 1 B 3	Hutchings	Edith	2002	59
Pinged East 1 B 3	Hutchings	David	2019	73
Pinged North B 1	James	Frank	2019	84
Pinged South A 19	James	Thomas John	1987	62
Pinged South A 19	James	Doris Irene (Teague)	1948	43
Pinged South D 3	James	William Henry	2000	64
Pinged South D 3	James	Susan Ann	2011	55
PS-A19	James	Thomas John	1945	42
PW-B6	James	Thomas Joseph	2011	40
PW-B6	James	Thomas Raymond (Ray)	2015	82
Pinged South D 6	James	William John (Willy)	2003	52
Pinged South D 6	James	Barbara	2021	70
Pinged South D 6	James	Amelia Louise		6 wks
Pinged South E 9	James	Mary P. (Gardner)	2017	88
Pinged South E 12	James	Bleddyn	2020	38
PF-A6	James	David Raymond	1944	68
PF-A6	James	David Raymond	1941	34
Pinged North J 8	Jenkins	Thomas John	1941	42
Pinged North J 8	Jenkins	Esther Ann (Lewis)	1977	
Pinged East 1 C 2	Jenkins	David Manfred	1997	33
PN-J8	Jenkins	Dilwyn Richard Corneluis	1979	45
Pinged East 1 C 2	Jenkins	Alwyn	2015	74
Pinged East 2 D 9	Jenkins	Jennie	1937	47
Pinged East 2 D 9	Jenkins	Thomas William	1942	
Pinged East 2 D 9	Jenkins	Lilian Muriel	1945	
Pinged East 2 D 9	Jenkins	Maldwyn	1991	73
Pinged South B 18	Jenkins	Eira	1944	
Pinged South B 18	Jenkins	Nora E.	1952	54
Pinged South B 18	Jenkins	William	1962	64
Pinged South B 18	Jenkins	Eric Victor	2000	68
Pinged South D 10	Jewell	John Alfred James	2005	83
Pinged South D 10	Jewell	Kevin Michael	2015	48
PS-D10	Jewell	Kevin Michael	2015	48
Pinged South D 10	Jewell	Ruby	2014	88
Pinged North E 7	John	Haydn Colin	1971	45
Pinged North E 7	John	Annie Marie	1999	71
PF-C3	John	Annie Rose	1977	73
Pinged North F 7	John	Ivor	1961	63
Pinged North F 7	John	Lily Rosser	1969	69

Section	Surname	Forenames	Year	Age
Pinged Carpark B 3	John	Mary	1918	84
Pinged Carpark B 4	John	William	1901	36
Pinged Carpark B 4	John	John	1910	49
Pinged Carpark B 6	John	Annie	1915	25
Pinged Carpark C 1	John	Margaret	1935	74
Pinged Carpark C 1	John	William	1948	81
Pinged Carpark I 1	John	William	1878	71
PF-C3	John	William Thomas	1961	67
Pinged Carpark I 1	John	Margaret	1878	74
Pinged Carpark B 3	John	John	1899	65
Pinged North J 2	Johns	Violet Eileen	1937	26
Pinged North J 2	Johns	William	1941	66
Pinged North J 2	Johns	Elizabeth Rees	1944	68
Pinged North J 2	Johns	Lily Alberta	1975	78
Pinged North B 5	Jones	Kevin William	2010	47
Pinged North D 8	Jones	Thomas Henry	1980	72
Not known	Jones	Margaret Ann	1952	66
Pinged North D 8	Jones	Margaret Eva	1982	73
Pinged North J 7	Jones	Eleanor	1941	71
Pinged North J 7	Jones	John	1945	75
Pinged North K 10	Jones	Rose Mildred	2011	93
PW-A1	Jones	Carol Dorothy	1988	28
Pinged North K 10	Jones	Carole	1940	7 dys
Pinged North M 4	Jones	William Walter	1946	59
Pinged North M 4	Jones	Margaret	1946	66
Pinged North M 7	Jones	Mary	1941	59
Pinged North M 7	Jones	James Walter	1957	74
Pinged North M 11	Jones	John	1933	42
Pinged North M 11	Jones	Emily Ann	1948	59
Pinged North M 15	Jones	Sophia	1980	73
Pinged North M 15	Jones	Gerwyn	1996	86
Pinged North O 7	Jones	Mary Ann	1971	73
Pinged North O 7	Jones	William John	1976	75
Pinged East 2 C 3	Jones	Thomas	1886	38
PF-D3	Jones	Mary Ann	1957	65
Pinged East 2 C 3	Jones	Mary	1928	80
Pinged East 2 C 6	Jones	John	1916	61
Pinged East 2 C 6	Jones	Gomer	1886	4 mths
Pinged East 2 C 6	Jones	Sarah	1938	85
Pinged East 2 C 7	Jones	David Amber	1929	49
Pinged East 2 C 7	Jones	Sarah	1935	52
Pinged East 2 C 7	Jones	Handel Winstone	1934	19
Pinged South C 8	Jones	Denzil	2000	75
Pinged South C 8	Jones	Ivorine Patricia	2017	83
Pinged West A 1	Jones	Doreen	1988	28
Pinged West B 8	Jones	Eris Raymond	1994	71
Pinged West B 8	Jones	Eunice Irene	2004	81
Pinged West C 4	Jones	R. C. Clifford	1975	63
Pinged West C 4	Jones	Blodwen	1998	84
Pinged West D 6	Jones	John Hamlyn	1971	58

Section	Surname	Forenames	Year	Age
Pinged West D 6	Jones	Beryl Jane Margaret	1992	72
Pinged West D 5	Just	David		
Pinged South E 13	King	Edward	2021	60
Pinged North C 5	Kingston	Albert Edward	1983	62
Pinged North C 5	Kingston	Elizabeth Mary (Betty)	1986	66
Pinged South A 14	Knight	Daisy	1997	80
Pinged South D 9	Ladd	Arthur Montgomery	2005	62
Pinged South D 9	Ladd	Susan Elizabeth	2008	61
Pinged East 2 C 5	Langdon	Alice Kate	1905	
Pinged North K 6	Lewis	Robert David	1943	
Pinged North K 9	Lewis	Annie Mary	1940	38
Pinged North K 9	Lewis	Richard	1958	65
Pinged Carpark B 2	Lewis	Mima	1990	86
Pinged Carpark B 5	Lewis	David	1863	47
Pinged South B 13	Lewis	Edna Roberts	1993	72
Pinged South C 15	Lewis	Constance Olivia	2001	72
Pinged East 2 B 9	Liley	Albert Henry	1907	19
Pinged East 2 B 9	Liley	Jeanette (Janet)	1911	17
Pinged East 2 B 9	Liley	Albert	1917	64
Pinged North I 2	Lily	Catherine Ann	1941	52
Pinged North I 2	Lily	Henry	1955	63
Pinged North D 3	Lloyd	Howell Handel	1977	71
Pinged North D 3	Lloyd	Dorothy Eileen	2011	93
Pinged North E 2	Lloyd	Elizabeth	1965	73
Pinged North E 2	Lloyd	Mary	1965	68
Pinged North E 2	Lloyd	Annie	1986	86
Pinged North E 2	Lloyd	Catherine	1987	84
PS-E6M	Lloyd	Catherine Ann Nancy	1983	53
Pinged North G 4	Lloyd	Richard	1949	59
PN-G4	Lloyd	Richard	1947	47
Pinged North G 4	Lloyd	Sarah	1953	67
Pinged North G 4	Lloyd	Minnie Maud	1978	64
PF-C6	Lloyd	Pryce	1917	70
Pinged North H 5	Lloyd	Sarah	1946	74
Pinged North H 5	Lloyd	David	1951	84
Pinged North H 5	Lloyd	May	1968	64
Pinged North I 3	Lloyd	John	1943	54
Pinged North L 4	Lloyd	Benjamin	1974	80
Pinged North L 4	Lloyd	Gertrude	1974	77
PC-A4	Lloyd	Lettice	1900	47
Pinged Carpark A 4	Lloyd	Lettice	1908	
Pinged Carpark C 5	Lloyd	Rachel Ann	1937	53
Pinged Carpark C 5	Lloyd	William	1963	77
Pinged Carpark C 5	Lloyd	Annie Muriel	1986	74
PF-A5	Lloyd	Eileen	2020	86
Pinged Carpark F 2	Lloyd	Elizabeth (Lizzie)	1964	82
PN-E2	Lloyd	Elizabeth	1965	73
Pinged South A 16	Lloyd	Margaret	1987	68
PN-13	Lloyd	David Bonnell	1987	61
Pinged South A 16	Lloyd	David Gwynfor	1994	74

Section	Surname	Forenames	Year	Age
Pinged South B 16	Lloyd	Daniel Hugh	2018	88
Pinged South C 12	Lloyd	David Benjamin	2000	52
Pinged South C 12	Lloyd	John	2008	65
Pinged South E 6	Lloyd	Catherine Ann	2005	81
Pinged South E 6	Lloyd	William Alewyn	1983	56
Pinged North I 3	Lloyd	Blodwen	1947	56
Pinged West C 2	Lord	Thomas	1985	64
Pinged West C 2	Lord	Mair	1998	76
Pinged West A 2	Macleod	Elizabeth M.	1978	81
Pinged South A 10	Maddrick	Julia	1989	68
Pinged South A 10	Maddrick	Jimmy	1999	79
Pinged North J 5	Maguire	Alec		
Pinged South D 5	Malcolm	Gavin	2003	72
PS-B17	Malcolm	Thomas	1992	64
Pinged South B 6	Mattey	Kate Bethan	1996	4 dys
Pinged North O 1	McKibbin	Morgan William	1997	77
Pinged North O 1	McKibbin	Norah Kathleen	2018	95
Pinged North D 1	Morgan	Elsie May	1977	
Pinged North D 1	Morgan	Evan Richard	1977	
Pinged North H 11	Morgan	David Treharne	1964	46
PF-B3	Morgan	David Isaac	1966	76
Pinged North H 11	Morgan	Dorothy Murie	2005	81
Pinged North I 1	Morgan	David John	1957	54
Pinged North I 1	Morgan	Margaret	1985	82
PF-B3	Morgan	Margaret	1969	64
Pinged North L 8	Morgan	Sarah	1925	45
Pinged East 2 B 6	Morgan	William Charles	1900	11 mths
Pinged East 2 B 6	Morgan	William	1944	71
Pinged East 2 B 6	Morgan	Sarah	1946	67
Pinged East 2 E 7	Morgan	Sarah	1899	9 mths
PN-L8	Morgan	Sarah	1893	
Pinged East 2 E 7	Morgan	Catherine	1903	55
Pinged East 2 E 7	Morgan	Charles	1909	68
Pinged South C 5	Morgan	James Glyndwr	2000	70
Pinged East 2 E 7	Morgan	Edward		
Pinged North G 2	Morgans	Gwilym R.		
Pinged North G 2	Morgans	Joan D. Lily		
Pinged North G 2	Morgans	Janey Mary	2011	57
Pinged North G 8	Moulder	Catherine Louisa	1954	75
Pinged North G 8	Moulder	Thomas Henry	1963	78
Pinged South B 5	Muir	Robert	1997	63
Pinged North F 3	Nelson	William John	1959	59
Pinged North F 3	Nelson	Margaret Evelyn	1993	53
Pinged North F 3	Nelson	Margaret Ann	2003	91
Pinged South E 4	Nelson	Ricky	2009	45
Pinged South E 5	Nelson	John Henry	2009	76
Pinged North C 1	Newman	Walter Edward	1980	78
Pinged North C 1	Newman	Edith Maud	1991	88
PF-C1	Northey	Joseph	1927	

Section	Surname	Forenames	Year	Age
Pinged North L 8	Oddy	Betty	2006	89
Pinged North B 6	O'Malley	Anthony	2011	93
Pinged North B 6	O'Malley	Sarah Glenys	2016	94
Pinged North A 2	O'Shea	John	2012	82
Pinged North A 2	O'Shea	Teresa	2013	55
Pinged West C 10	Owen	Thomas Henry	1955	71
Pinged West C 10	Owen	Mary Ann	1963	69
Pinged South C 14	Owens	Margaret Yvonne	2001	48
Pinged South C 14	Owens	Gwyndaf	2011	58
Pinged South E 2	Parry	Irene	2006	94
Pinged West C 6	Paynter	David James	1964	52
Pinged West C 6	Paynter	Edith	1999	72
Pinged North H 2	Phillips	John	2002	61
Pinged North E 5	Phillips	Joseph Wynford	1970	40
Pinged North K 3	Phillips	Elizabeth	1933	60
Pinged North K 3	Phillips	John	1965	88
Pinged North L 3	Phillips	Thomas	1965	
Pinged North L 3	Phillips	Ruth Maud	1969	
Pinged North L 3	Phillips	Agnes Margaret	1921	
PE2-C1	Phillips	Annie	1900	12 mths
PF-B2	Phillips	Brynley Gwynfor	1951	46
Pinged North N 9	Phillips	Mair Elizabeth	1962	51
Pinged North N 9	Phillips	Phillip John (Johnny)	1995	85
Pinged North N 9	Phillips	Iorwerth Dennis	1983	62
Pinged East 2 C 1	Phillips	David	1882	2 mths
Pinged East 2 C 1	Phillips	Margaretta Annie	1900	8 mths
Pinged East 2 C 1	Phillips	Margaret	1930	75
Pinged East 2 C 1	Phillips	Phillip	1934	83
Pinged East 2 C 1	Phillips	Phillipa Margaret	1882	
Pinged Carpark K 1	Phillips	John	1958	79
Pinged Carpark K 1	Phillips	Elizabeth	1962	79
Pinged Carpark K 1	Phillips	Evelyn		
Pinged Carpark K 1	Phillips	Margaret Ann	1992	74
PF-B2	Phillips	Margaret	1924	23
PE2-C1	Phillips	Margaret Davies	1934	75
PL-B2	Phillips	Violet	1956	10
Pinged North H 10	Pollard	William	1975	72
Pinged West A 6	Pollard	Cliff	1976	64
Pinged West A 6	Pollard	Esther Margery	2005	92
Pinged West A 6	Pollard	Kenneth	2006	70
Pinged North C 3	Powell	Florence Millie	1983	55
Pinged North C 3	Powell	Edward Stanley	2002	79
Pinged South D 4	Powell	Eamon James	2002	72
Pinged South E 15	Powell	Janey Mary	2021	65
Pinged South B 8	Pritchard	David James	1995	68
Pinged South B 8	Pritchard	Mavis	2011	78
Pinged West C 7	Pritchard	Joseph	1964	64
Pinged West C 7	Pritchard	Olwen May	1992	83
Pinged North L 7	Probert	Ernest	1934	32

Section	Surname	Forenames	Year	Age
Pinged South B 12	Proctor	Frank	1993	77
Pinged South B 12	Proctor	Margaret Violet	2014	93
Pinged South B 15	Proctor	Caroline Annette	1992	39
Pinged South B 15	Proctor	Leonard Frank	2000	53
Pinged North F 9	Protheroe	Annie Mary	1964	63
Pinged North F 9	Protheroe	Gwilym	1975	76
Pinged North N 7	Protheroe	Evan	1933	71
Pinged North N 7	Protheroe	Margaret	1934	71
Pinged North K 10	Pugh-Jones	Douglas	1978	63
Pinged East 1 B 2	Purdy	James	1990	69
Pinged East 1 B 2	Purdy	Doris	1991	67
PF-A1	Pugh	Raymond	1942	12 mths
Pinged West B 6	Raymond	Kenneth	1974	21
PC-G2	Rees	Anne	1934	81
Pinged North C 6	Rees	Lynwen	1984	39
Pinged North C 6	Rees	Jack S.	2010	72
Pinged North N 1	Rees	Margaret Ann	1954	67
Pinged North N 1	Rees	William	1971	80
Pinged North N 1	Rees	David John	1979	56
Pinged North N 1	Rees	Edward Russel	1989	72
Pinged North N 1	Rees	Margaret Winifred	1997	75
Pinged North P 2	Rees	John	1956	63
Pinged East 2 E 6	Rees	John James	1944	77
Pinged East 2 E 6	Rees	Agnes (Morgan)	1971	77
Pinged Carpark G 1	Rees	Elizabeth	1890	7 mths
Pinged Carpark G 1	Rees	Annie	1966	87
Pinged Carpark G 1	Rees	Margaret	1967	85
Pinged Carpark G 2	Rees	Llewellyn Maelog	1917	25
Pinged Carpark G 2	Rees	Thomas	1921	68
PN-N1	Rees	Thomas	1971	81
Pinged Carpark G 2	Rees	Annie	1934	81
Pinged Carpark G 3	Rees	David	1906	64
Pinged Carpark G 3	Rees	Margaret	1931	82
PC-G1	Rees	Margaret	1967	85
Pinged Carpark I 3	Rees	Ivor Thomas	1974	71
PW-D9	Rees	Ivor Glyndwr	2009	70
Pinged Carpark I 3	Rees	Mary Jane	1982	76
Pinged South A 3	Rees	Ken	1990	59
Pinged South A 3	Rees	Gertrude Valerie	2004	69
Pinged West D 8	Rees	Wynford	1964	40
Pinged West D 8	Rees	Sandra Lorraine	2008	44
Pinged West D 9	Rees	John	1964	71
Pinged West D 9	Rees	Gladys	1968	74
Pinged West D 9	Rees	Pam M.	2015	85
Pinged West D 12	Rees	Cora Barbara Mary	1991	66
Pinged West D 12	Rees	Moira Evelyn	1953	mths
Pinged West D 12	Rees	James Thomas	1997	77
Pinged West D 12	Rees	Marilyn Jennifer	2013	60
Pinged North F 6	Reynolds	Haydn	1960	26
Pinged North F 6	Reynolds	Thomas	1972	61

Section	Surname	Forenames	Year	Age
Pinged North F 6	Reynolds	Muriel Violet	1995	80
Pinged East 1 C 3	Rickwood	Margaret Cynthia	2000	68
Not known	Roche	Alice Kate	1905	
Pinged East 2 C 5	Roche	Edward John	1904	40
Pinged East 2 C 5	Roche	Sarah	1934	60
Pinged East 2 C 5	Roche	Robert	1936	73
Pinged North F 4	Rogers	David	1959	52
Pinged North F 4	Rogers	Sarah Ann	1989	95
Pinged North F 4	Rogers	Thomas Haddon	2004	72
Pinged North H 1	Rogers	John	1954	55
Not known	Rogers	John Philip	2002	61
Pinged North H 1	Rogers	Lizzie	1991	90
Pinged Carpark E 2	Rosser	Catherine	1957	83
Pinged Carpark E 2	Rosser	William Henry	1962	75
Pinged South B 3	Rosser	Ronald Charles	1997	70
Pinged South E 14	Rosser	Helen Susan (Hurley)	2020	61
Pinged North H 12	Rowlands	Kenneth Goronwy	1983	55
Pinged North L 13	Rowlands	John	1962	73
Pinged North L 13	Rowlands	Alice Marguerite	1987	96
Pinged North G 10	Rumbelow	Daniel Glyndwr	1957	36
Pinged North G 10	Rumbelow	Annie Mildred	1999	71
Pinged North G 10	Rumbelow	Vincent	1999	71
Pinged West C 3	Rumsey	Edward Arthur	1976	52
Pinged West C 3	Rumsey	Mary	2004	81
Pinged East 1 C 4	Ryan	Linda Mary	2000	46
Pinged East 2 D 3	Sadler	John Bevan	1912	45
Pinged East 2 D 3	Sadler	Ann	1928	53
Pinged East 2 E 3	Sadler	Thomas Llewellyn	1966	61
Pinged East 2 E 3	Sadler	Pheobe	1970	63
Pinged South C 18	Samuels	Gwilym	2001	67
Pinged North D 2	Slimm	Olwen	1976	53
Pinged North D 2	Slimm	William Vincent	2006	88
Pinged North M 9	Slimm	William Henry	1949	70
Pinged North M 9	Slimm	Caroline	1954	68
Pinged North M 9	Slimm	Gwilym	1923	8
Pinged East 1 B 1	Smith	Wilfred Lawson	1975	49
Pinged East 2 E 5	Stephens	Rev Joseph Gwynfor	1990	82
Pinged South C 4	Stephens	Donald David	1999	69
Pinged South C 4	Stephens	Rhiannon (Lloyd)	2014	85
PF-B7	Stephens	Agnes	1970	86
Pinged East 2 E 5	Stephens	Ann	1963	56
Pinged East 2 B 4	Stephenson	George	1934	47
Pinged East 2 B 4	Stephenson	Mary	1968	79
Pinged West D 15	Stephenson	Arthur	1911	37
Pinged West D 15	Stephenson	Minnie	1876	
Pinged South D 12	Stockwell	Dawn	2008	50
Pinged South E 7	Stuart	Carol Ann	2014	62
Pinged South A 5	Sturgeon	Jacqueline Ann	2007	70
PS-A5	Sturgeon	Mark	1992	34
PF-A8	Swanton	Lilian Winfred	1940	33

Section	Surname	Forenames	Year	Age
PF-A8	Swanton	Margaret Elizabeth	1946	74
PF-A8	Swanton	Richard Henry	1943	68
Pinged West A 5	Tartaglia	Pietro	1976	64
Pinged West A 5	Tartaglia	Antonietta (Scarinz)	2003	85
Pinged North E 4	Thomas	Gladys	1969	66
Pinged North E 4	Thomas	Ernest George	1951	47
Pinged North K 3	Thomas	David Hayden	1961	
Pinged North K 3	Thomas	Dewi	2006	
Pinged North M 9	Thomas	Molly	2001	79
Not known	Thomas	Molly	1988	66
Pinged North M 9	Thomas	David John (Dai)	1988	67
Pinged East 2 A 5	Thomas	David	1879	
Pinged East 2 A 5	Thomas	Margaret	1897	45
Pinged East 2 E 9	Thomas	John Phillip Martin		
Pinged East 2 E 9	Thomas	Viola	2000	76
Pinged East 2 E 9	Thomas	William Phillip	2004	82
Pinged Carpark B 8	Thomas	Anita		
Pinged Carpark B 8	Thomas	Mary	1955	60
Pinged Carpark D 1	Thomas	Margaret	1889	54
Pinged Carpark D 1	Thomas	Alfred	1893	34
Pinged Carpark D 1	Thomas	Dafydd	1899	69
Pinged Carpark D 3	Thomas	Benjamin	1898	64
Pinged South D 2	Thomas	Elizabeth Mandy	2001	35
Pinged South E 3	Thomas	Arwel	2008	29
Pinged South E 16	Thomas	David Vivian	2022	79
Pinged South B 17	Thomas	Malcolm	1992	64
Pinged North L 10	Thorne	Sarah	1932	56
Pinged North L 10	Thorne	James	1940	73
Pinged Carpark C 7	Veale	Jill	2001	61
Pinged South C 1	Vivian	Michael Stafford	1998	54
Pinged West A 3	Walden	Dilys (Williams)	1977	68
Pinged East 2 D 9	Walters	Doli	2004	91
Pinged South E 11	Warner	Steven	2017	50
Pinged North E 8	Waters	Margaret Ann	1974	60
Pinged South A 5	Wells	Alfred William Charles	1990	76
Pinged North J 9	Wilds	Thomas Henry	1963	52
Pinged North L 12	Wilds	Esther Mary	1937	3 mths
Pinged North L 12	Wilds	Lionel Albert	1971	63
Pinged North L 12	Wilds	Sally	2004	93
Pinged South D 8	Wilds	Elizabeth Mary	2004	65
Pinged South D 8	Wilds	Iorwerth Clifford	2015	82
Pinged North C 2	Williams	Lenard O.	1981	64
Pinged North C 2	Williams	Margaret Hannah	1998	77
PE2-B1	Williams	Edward	1907	47
Pinged North F 2	Williams	Edward John	1958	52
Pinged North F 2	Williams	Eirlys	1978	68
Pinged North F 2	Williams	Marion	2015	82
Pinged North G 5	Williams	Owen John	1949	62
Pinged North G 9	Williams	Thomas Clifford	1954	29

Section	Surname	Forenames	Year	Age
Pinged North G 9	Williams	Melva Reanon	1999	73
Pinged North J 5	Williams	Thomas	1939	61
Pinged North J 5	Williams	Bessie	1945	63
Pinged North K 2	Williams	Ivor	1932	
Pinged North K 2	Williams	Annie Miriam	1953	
Pinged North K 2	Williams	Audrey Joy	1977	59
Pinged North L 11	Williams	David	1967	82
Pinged North L 11	Williams	Annie Muriel	1968	78
Pinged North L 11	Williams	Beti		
Not known	Williams	Francis	1919	
Pinged North M 14	Williams	Thomas John Haydn	1961	53
Not known	Williams	David John	1919	19
Pinged North M 14	Williams	Dorothy Mary	1994	89
Not known	Williams	Dorothy Mary	1982	39
Pinged North O 2	Williams	Olwen	1926	
Pinged North O 2	Williams	Margaret	1932	79
Pinged North O 2	Williams	David	1936	83
Not known	Williams	Mary Rees	1953	73
Pinged North O 5	Williams	Mary Caroline	1933	19
Pinged North O 5	Williams	Martha Ellen	1969	82
Pinged North O 5	Williams	Richard	1946	58
Pinged East 2 A 1	Williams	Mervyn	1908	8 mths
Pinged East 2 A 1	Williams	Tegwen	1929	18
PC-B2	Williams	Samuel	1915	70
PC-C2	Williams	Sarah	1919	49
Pinged East 2 A 1	Williams	Sarah Ann	1942	58
Pinged East 2 A 1	Williams	Adelina	1946	31
Pinged East 2 A 1	Williams	Walter	1958	73
Pinged East 2 A 1	Williams	Ayron	1987	69
Pinged East 2 A 5	Williams	Mary	1909	81
Pinged East 2 A 6	Williams	Margaret	1935	56
Pinged East 2 A 6	Williams	Richard	1940	59
Pinged East 2 A 6	Williams	David Ernest	1916	
Pinged East 2 A 6	Williams	Margaret Ann	1950	49
Pinged East 2 A 7	Williams	David	1968	83
Pinged East 2 B 1	Williams	David	1943	64
Pinged East 2 B 2	Williams	Ann	1875	52
Pinged East 2 B 2	Williams	Thomas	1879	64
Not known	Williams	Thomas	1872	mths
PF-B9	Williams	Thomas	1952	82
Pinged East 2 B 8	Williams	Margaret Ruth	2006	79
Pinged East 2 B 8	Williams	Hubert Lemuel	2009	85
Pinged East 2 E 4	Williams	David	1965	88
PE2-B1	Williams	David	1905	62
Pinged East 2 E 8	Williams	John	1953	72
Pinged East 2 E 8	Williams	Catherine	1971	84
Pinged Carpark B 1	Williams	Lizzie	1948	81
Pinged Carpark B 2	Williams	Margaret	1918	66
Pinged Carpark C 1	Williams	Catherine	1906	74

Section	Surname	Forenames	Year	Age
Pinged Carpark C 2	Williams	Sydney John	1898	14 mths
Pinged Carpark C 2	Williams	John	1919	48
Pinged Carpark C 2	Williams	Sarah	1944	74
Pinged Carpark C 7	Williams	Hector	1985	75
Pinged Carpark C 7	Williams	Rachel Dilys	1994	84
Pinged Carpark D 4	Williams	Mary Jane	1963	
Pinged Carpark D 4	Williams	David	1976	76
Pinged Carpark D 4	Williams	John Roland		
Pinged Carpark E 1	Williams	John	1877	62
Pinged Carpark E 1	Williams	Emma	1886	75
Pinged Carpark E 3	Williams	John	1928	75
Pinged Carpark E 3	Williams	Margaret	1934	76
Pinged Carpark E 3	Williams	Elizabeth	1943	52
Pinged Carpark F 2	Williams	William	1896	69
Pinged Carpark F 2	Williams	Ann	1919	80
Pinged Carpark F 2	Williams	Dafydd	1888	32
Pinged Carpark F 2	Williams	Hugh	1941	83
Pinged Carpark H 1	Williams	John	1907	67
Pinged Carpark H 1	Williams	Mary (John)	1907	63
Pinged Carpark H 1	Williams	Griffith	1887	10 mths
PF-B9	Williams	Gwyneth Margaret Augusta	2003	91
PN-F5	Williams	Gwyneth Mary Eynon	1960	38
Pinged Carpark H 3	Williams	Thomas	1927	55
Pinged Carpark H 3	Williams	Mary	1937	56
Pinged Carpark J 2	Williams	Margaret Ann	1940	64
PE2-E4	Williams	Margaret Ann	1965	84
Pinged Carpark J 2	Williams	William	1936	77
Pinged South A 7	Williams	Howard Aisne	1989	74
Pinged South A 7	Williams	Ruth	1990	70
Pinged South A 13	Williams	Thomas Ambrose	1989	77
Pinged South A 13	Williams	Phyllis Florence	1998	79
Pinged South B 4	Williams	Haulwen	1997	69
Pinged South B 4	Williams	William Archibald	2000	77
Pinged South B 9	Williams	Bernard Rhys	1922	72
Pinged South D 7	Williams	Charlotte	2003	84
Pinged South D 14	Williams	Minnie	1990	83
Pinged South D 14	Williams	Katie	1998	82
PF-B11	Williams	Lettice	1957	77
Pinged South E 1	Williams	Noreen Mary	2004	81
Pinged South E 10	Williams	Gareth Wayne	2018	43
Pinged West A 1	Williams	Gerwyn Benjamin	1978	45
Pinged West A 1	Williams	Dorothy Mary	1982	39
Pinged West B 11	Williams	Thomas	1971	67
Pinged West B 11	Williams	Emily M.	1993	83
Pinged West D 1	Williams	Linda Elaine	1996	44
Pinged South C 9	Wiltshire	Richard David Thomas	2000	79
Pinged South C 9	Wiltshire	Margaret Jane	2003	77
Pinged North A 3	Young	William Ivor	2014	83
Pinged North A 3	Young	Freda Mary	2017	85

Llandyry Church Cemetery

FindAGrave Ledger

804 Memorials

Compiled by Graham Tudor Emmanuel

Tudor59 · People's Collection Wales

Virtual Cemetery

<https://www.findagrave.com/cemetery/2662083/memorial-search?cemeteryName=Llandyry+Churchyard&page=1#sr-258236300>



Vivit Post Funera Virtus — Virtue Lives On After Death

Introduction

Llandry Church Cemetery stands in the parish of Llandry, Carmarthenshire, Wales, and holds within it the memory of 804 individuals whose lives touched this corner of west Wales across more than two centuries. This ledger represents the complete FindAGrave memorial record for the churchyard as it stood on 7 April 2026.

Each entry in this ledger is linked to the individual memorial page on FindAGrave through a clickable URL and a scannable QR code. Those memorials carry photographs of headstones, biographical details where known, and the GPS coordinates for the burial plot.

This project follows the Fourth Generation Memorial methodology developed through the Pembrey and Burry Port War Memorials project — linking physical memorial, archive record, GPS location, and digital access through a single scannable gateway. Llandry is the second Fourth Generation Memorial project of this kind.

The entries in this ledger are presented in the order they appear in the FindAGrave cemetery search, alphabetical by surname. Where individuals share a name, all entries are preserved as they appear in the source record.

Graham Tudor Emmanuel · Tudor59 · People's Collection Wales

August Alexander "Gus" Anderson

1920 – 2012

Plot: PE2-E8

<https://www.findagrave.com/memorial/258236300>



Olive Megan Williams Anderson

1922 – 2016

Plot: PE2-E8

<https://www.findagrave.com/memorial/258236370>



David Anthony

Apr 1880 – 8 Nov 1880

Plot: PE2-D1

<https://www.findagrave.com/memorial/258214243>



Mary Anthony

27 Apr 1884 – 21 Apr 1901

Plot: PE2-D1

<https://www.findagrave.com/memorial/258214371>



Mary Anthony

1855 – 27 Apr 1884

Plot: PE2-D1

<https://www.findagrave.com/memorial/258192653>



Angela Pritchard Arnold

1959 – 2 May 2022

Plot: PS-B8

<https://www.findagrave.com/memorial/255942868>



Harold Thomas Aubrey

1910 – 1961

Plot: PN-P3

<https://www.findagrave.com/memorial/232788350>



Charles Edward Babbage

1889 – 5 Sep 1958

Plot: PF-D1

<https://www.findagrave.com/memorial/258842255>



Christopher Emmanuel George Babbage

1853 – 7 Oct 1936

Plot: PF-D1

<https://www.findagrave.com/memorial/258841967>



Jessie Babbage

1888 – 8 Feb 1919

Plot: PF-D1

<https://www.findagrave.com/memorial/258842171>



Rose Hannah Babbage

1865 – 24 Jul 1938

Plot: PF-D1

<https://www.findagrave.com/memorial/258842036>**William John Babbage**

1887 – 24 Oct 1917

Plot: PF-D1

<https://www.findagrave.com/memorial/258842081>**Elizabeth Ann "Bessie" David Bailey**

16 Feb 1907 – Jan 1958

Plot: PN-M1

<https://www.findagrave.com/memorial/249635921>**William John "Bill" Bailey**

16 Dec 1903 – 1 Jan 1990

Plot: PN-M1

<https://www.findagrave.com/memorial/249615577>**Sidney Barnes**

1934 – 1981

Plot: PW-D3

<https://www.findagrave.com/memorial/257331659>**Benjamin Bayliss**

1867 – 27 Apr 1919

Plot: PF-B8

<https://www.findagrave.com/memorial/258749946>**Thirza Bayliss**

1865 – 11 Mar 1940

Plot: PF-B8

<https://www.findagrave.com/memorial/258750001>**Gertie Beer**

1906 – 1998

Plot: PS-B13

<https://www.findagrave.com/memorial/257178044>**David P Benet**

1888 – 23 Jun 1965

Plot: PN-N6

<https://www.findagrave.com/memorial/257903924>**Gwilym Benet**

1919 – 12 Apr 1937

Plot: PN-N6

<https://www.findagrave.com/memorial/257904079>

Rose Benet

1887 – 18 Feb 1933

Plot: PN-N6

<https://www.findagrave.com/memorial/257903989>

Agnes Langdon Bevan

3 Sep 1897 – 10 Jul 1974

Plot: PN-N3

<https://www.findagrave.com/memorial/257902814>

Jack Llewellyn Bevan

1921 – 16 Dec 1925

Plot: PN-N3

<https://www.findagrave.com/memorial/257902911>

Llewellyn Bevan

1838 – 9 Nov 1915

Plot: PE2-D4

<https://www.findagrave.com/memorial/258216194>

Llewellyn Bevan

1882 – 14 Jan 1882

Plot: PE2-D3

<https://www.findagrave.com/memorial/258215158>

Margaret Bevan

1840 – 19 Oct 1925

Plot: PE2-D4

<https://www.findagrave.com/memorial/258216264>

Margaret Bevan

1875 – 25 Jun 1877

Plot: PE2-D3

<https://www.findagrave.com/memorial/258215081>

Thomas Bevan

1873 – 11 Jul 1947

Plot: PN-N3

<https://www.findagrave.com/memorial/257902767>

Elizabeth Gwynne Beynon

1891 – 22 Apr 1927

Plot: PC-F3

<https://www.findagrave.com/memorial/258423735>

Elizabeth Irene Beynon

1922 – 21 Jun 1979

Plot: PN-D6

<https://www.findagrave.com/memorial/257589097>

Thomas Anthony Beynon

1923 – 12 Nov 2006

Plot: PN-D6

<https://www.findagrave.com/memorial/257589138>



Florence Ellen Biggs

1882 – 1968

Plot: PN-G7

<https://www.findagrave.com/memorial/257619738>



Richard George Biggs

1885 – 1951

Plot: PN-G7

<https://www.findagrave.com/memorial/257619721>



Jackie Bird

Dates unknown

Plot: PC-A9

<https://www.findagrave.com/memorial/258252022>



Lilian Bird

1910 – 1975

Plot: PC-A9

<https://www.findagrave.com/memorial/258251996>



Doreen Blenkinsop

1921 – 21 Jul 2006

Plot: PW-C5

<https://www.findagrave.com/memorial/257315953>



James Blenkinsop

1917 – 2 Jan 1969

Plot: PW-C5

<https://www.findagrave.com/memorial/257315799>



David Bonnell

1858 – 23 Feb 1936

Plot: PC-A5

<https://www.findagrave.com/memorial/258251702>



David Thomas Bonnell

1895 – 27 May 1961

Plot: PC-A5

<https://www.findagrave.com/memorial/258251813>



Ivor Owen Bonnell

12 Apr 1901 – 20 Apr 1901

Plot: PC-A5

<https://www.findagrave.com/memorial/258251775>



John Hugh Bonnell

1926 – 2011

Plot: PS-D16

<https://www.findagrave.com/memorial/257241493>

Margaret Lewis Bonnell

1866 – 12 Mar 1934

Plot: PC-A5

<https://www.findagrave.com/memorial/258251727>

Margaret Bourke

1933 – 1941

Plot: PF-A5

<https://www.findagrave.com/memorial/258745993>

Patrick "Pat" Bourke

1947 – 15 May 2017

Plot: PN-A1

<https://www.findagrave.com/memorial/257380198>

Venus Vera "Vinnie" Bourke

1913 – 1961

Plot: PF-A5

<https://www.findagrave.com/memorial/258745899>

William Joseph Bourke

1906 – 1972

Plot: PF-A5

<https://www.findagrave.com/memorial/258744867>

Catherine Madge Bowen

22 Sep 1928 – 3 Jan 2004

Plot: PE1-A2

<https://www.findagrave.com/memorial/258063244>

David John Bowen

1916 – 6 Jan 1948

Plot: PN-I9

<https://www.findagrave.com/memorial/257663739>

IAN Bowen

7 Aug 1924 – 1 Oct 2009

Plot: PE1-A2

<https://www.findagrave.com/memorial/258063313>

Isaac Bowen

1883 – 5 Jan 1954

Plot: PN-I9

<https://www.findagrave.com/memorial/257663083>

Ivy Elizabeth Bowen

1921 – 20 Sep 1988

Plot: PS-A12

<https://www.findagrave.com/memorial/257096329>**James Bowen**

9 Feb 1924 – 5 Sep 1949

Plot: PN-H10

<https://www.findagrave.com/memorial/257630895>**John Griffith Bowen**

1873 – 7 Jun 1938

Plot: PF-A11

<https://www.findagrave.com/memorial/258747698>**Mary Ann Bowen**

1882 – 9 Aug 1976

Plot: PN-I9

<https://www.findagrave.com/memorial/257663122>**Michael Bowen**

3 Jun 1952 – 1 Oct 2012

Plot: PE1-A2

<https://www.findagrave.com/memorial/258063405>**Phyllis Margaret Bowen**

1927 – 12 Nov 2002

Plot: PS-C11

<https://www.findagrave.com/memorial/257241109>**Sidney Lewis Bowen**

1919 – 7 Feb 1993

Plot: PS-A12

<https://www.findagrave.com/memorial/257096388>**Thomas Edwin Bowen**

1924 – 16 Oct 2000

Plot: PS-C11

<https://www.findagrave.com/memorial/257241093>**Willie Bowen**

1917 – Sep 1967

Plot: PN-I9

<https://www.findagrave.com/memorial/257663788>**Joseph Henry "Harry" Bridgewater**

unknown – 13 Feb 1980

Plot: PN-D7

<https://www.findagrave.com/memorial/257589202>

Vera Doreen Bridgewater

unknown – 31 May 1982

Plot: PN-D7

<https://www.findagrave.com/memorial/257589224>



Elizabeth Rose Brookes

1921 – 6 Feb 2002

Plot: PS-D15

<https://www.findagrave.com/memorial/257241577>



Granville Brookes

1921 – 12 Sep 1980

Plot: PS-D15

<https://www.findagrave.com/memorial/257241548>



Wayne Bunyan

1969 – 1989

Plot: PN-C3

<https://www.findagrave.com/memorial/257503615>



Arthur Vernon Henry Butterfill

1922 – 13 Feb 1998

Plot: PS-B2

<https://www.findagrave.com/memorial/257151682>



Vincent Leslie Calford

1949 – 2001

Plot: PS-C13

<https://www.findagrave.com/memorial/257241172>



Ann Charles

1833 – 27 Mar 1898

Plot: PC-A2

<https://www.findagrave.com/memorial/258267172>



Evan Cyril Charles

1917 – 29 Jan 1973

Plot: PN-N5

<https://www.findagrave.com/memorial/232789762>



Gweneira Charles

1927 – 8 Aug 1990

Plot: PN-N2

<https://www.findagrave.com/memorial/257902265>



Margaret "Peggy" Charles

1920 – 4 Feb 2013

Plot: PN-N5

<https://www.findagrave.com/memorial/232789931>



Mary Charles

1818 – 30 Aug 1887

Plot: PC-J1

<https://www.findagrave.com/memorial/258528307>**Peter Charles**

1834 – 3 Jul 1896

Plot: PC-A2

<https://www.findagrave.com/memorial/258267114>**Stephen Wynn Charles**

1926 – 29 Sep 1987

Plot: PN-N2

<https://www.findagrave.com/memorial/257902196>**Wendy Charles**

1946 – 12 Jan 1960

Plot: PN-N2

<https://www.findagrave.com/memorial/257902318>**John Joseph Collick**

1935 – 2020

Plot: PE1-B4

<https://www.findagrave.com/memorial/258064768>**Patricia Collick**

1944 – 1992

Plot: PE1-B4

<https://www.findagrave.com/memorial/258064714>**Gloria Rose Congdon**

1926 – 16 Jan 1992

Plot: PS-A1

<https://www.findagrave.com/memorial/257093805>**John Henry Congdon**

1925 – 21 Mar 1987

Plot: PS-A18

<https://www.findagrave.com/memorial/257142903>**Betty Cooper**

1934 – 24 Sep 1984

Plot: PN-C7

<https://www.findagrave.com/memorial/257538208>**Thomas Henry Cooper**

1934 – 8 Dec 2005

Plot: PN-C7

<https://www.findagrave.com/memorial/257543164>

Alexander John Cunningham

unknown – 14 Nov 1995

Plot: PE1-C1

<https://www.findagrave.com/memorial/258088156>



Annie Cunnington

1879 – 10 Nov 1969

Plot: PN-J4

<https://www.findagrave.com/memorial/257664525>



George S Cunnington

1876 – 30 Oct 1953

Plot: PN-J4

<https://www.findagrave.com/memorial/257664501>



SGT Wilfred Courtney Cunnington

8 Apr 1909 – 18 Oct 1938

Plot: PN-J4

<https://www.findagrave.com/memorial/257664361>



Margaret Marlene Cybulski

1946 – 1947

<https://www.findagrave.com/memorial/283165627>



Wladyslaw Cybulski

1921 – 2000

<https://www.findagrave.com/memorial/283165578>



Bronwen Daniel

Sep 1926 – Feb 1987

Plot: PN-B2

<https://www.findagrave.com/memorial/257380961>



Melville Daniel

May 1924 – Dec 2003

Plot: PN-B2

<https://www.findagrave.com/memorial/257381022>



David Thomas Daniels

1906 – 24 Oct 1978

Plot: PN-G1

<https://www.findagrave.com/memorial/248835272>



Einon M Daniels

1913 – 24 Dec 1993

Plot: PW-B9

<https://www.findagrave.com/memorial/257306526>



Helen M Daniels

1970 – 1972

Plot: PW-B8

<https://www.findagrave.com/memorial/257306409>**Idris Daniels**

1950 – 24 Jun 1972

Plot: PW-B9

<https://www.findagrave.com/memorial/257306497>**John Daniels**

12 Sep 1873 – 31 May 1951

Plot: PN-G1

<https://www.findagrave.com/memorial/248831111>**Margaret Reynolds Daniels**

6 Nov 1919 – 25 Apr 1974

Plot: PW-B5

<https://www.findagrave.com/memorial/248830928>**Mary Davies Daniels**

1878 – 3 May 1963

Plot: PN-G1

<https://www.findagrave.com/memorial/248834897>**William John Daniels**

1905 – 11 May 1974

Plot: PW-B4

<https://www.findagrave.com/memorial/248830883>**Ernest Edward Andrew Dark**

16 Oct 1909 – 2 Jun 1968

Plot: PW-D7

<https://www.findagrave.com/memorial/257331772>**Harriet James Dark**

1911 – 20 Oct 1978

Plot: PW-D7

<https://www.findagrave.com/memorial/257331797>**Ann Lloyd David**

1886 – Jan 1908

Plot: PN-M1

<https://www.findagrave.com/memorial/249650185>**Ann Phillips David**

1857 – 25 May 1930

Plot: PE2-B5

<https://www.findagrave.com/memorial/249918910>

David David

1857 – 17 Sep 1878

Plot: PE-C2

<https://www.findagrave.com/memorial/258185607>

David "Dafydd" David

8 Jan 1884 – Apr 1949

Plot: PN-G3

<https://www.findagrave.com/memorial/259928795>

Elizabeth Erasmus David

1827 – 7 Oct 1911

Plot: PE-C2

<https://www.findagrave.com/memorial/249910916>

Gwilym David

1889 – 1946

Plot: PN-H4

<https://www.findagrave.com/memorial/257622404>

Joseph David

1878 – 1948

Plot: PC-C6

<https://www.findagrave.com/memorial/249919496>

Kate "Katie" David

1899 – 22 Dec 1955

Plot: PN-M2

<https://www.findagrave.com/memorial/249925222>

Latitia Jones David

26 Oct 1886 – 29 Jan 1953

Plot: PN-G3

<https://www.findagrave.com/memorial/259928946>

Mary David

1880 – 1948

Plot: PC-C6

<https://www.findagrave.com/memorial/249924668>

Philip David

1896 – 23 Apr 1981

Plot: PN-M2

<https://www.findagrave.com/memorial/249919171>

Thomas David

1867 – 28 May 1889

Plot: PE-C2

<https://www.findagrave.com/memorial/258185565>

William David

22 Apr 1860 – Jan 1945

<https://www.findagrave.com/memorial/259929403>



Alan Davies

1918 – 1981

Plot: PN-F10

<https://www.findagrave.com/memorial/257607278>



Allan Dudley Davies

1942 – 1944

Plot: PN-I6

<https://www.findagrave.com/memorial/257641577>



Anne Davies

Aug 1948 – 23 Jan 1949

Plot: PN-H8

<https://www.findagrave.com/memorial/257630762>



Annie Elizabeth Davies

1916 – 5 Mar 1998

Plot: PN-H3

<https://www.findagrave.com/memorial/257622157>



Bessie Annetta Jones Davies

1915 – 1934

Plot: PE2-C7

<https://www.findagrave.com/memorial/258190972>



Blodwen Davies

1926 – 10 Dec 2019

Plot: PE-A1

<https://www.findagrave.com/memorial/258062628>



Blodwen Davies

1902 – 22 Sep 1978

<https://www.findagrave.com/memorial/260716264>



Daniel Eiros Davies

1933 – 13 Mar 2009

Plot: PN-B4

<https://www.findagrave.com/memorial/257381418>



Daniel John Davies

1905 – 25 Nov 1985

Plot: PN-H3

<https://www.findagrave.com/memorial/257622115>



David Davies

1852 – 5 Jan 1923

Plot: PE2-D8

<https://www.findagrave.com/memorial/258228708>**Dewi Davies**

1924 – 21 Aug 2004

Plot: PE1-A1

<https://www.findagrave.com/memorial/258062526>**Dorothy Davies**

1929 – 4 Oct 2004

Plot: PN-F1

<https://www.findagrave.com/memorial/257604104>**Edith Davies**

1887 – 1974

Plot: PN-H4

<https://www.findagrave.com/memorial/257622366>**Edward John Davies**

1936 – 13 Dec 1990

Plot: PN-E1

<https://www.findagrave.com/memorial/257589909>**Eliza Phillips Davies**

1877 – 4 Jan 1900

Plot: PE2-C1

<https://www.findagrave.com/memorial/258184893>**Elizabeth Muriel Davies**

1919 – 2000

Plot: PN-I5

<https://www.findagrave.com/memorial/257641363>**Esther May Davies**

1917 – 9 Sep 2001

Plot: PN-E1

<https://www.findagrave.com/memorial/257589878>**Evan Henry Davies**

1918 – 2 Oct 1928

Plot: PN-N4

<https://www.findagrave.com/memorial/259022940>**Frances Williams Davies**

1867 – 24 Jul 1944

Plot: PN-I7

<https://www.findagrave.com/memorial/257643963>

Glenys Davies

1920 – 1964

Plot: PN-F10

<https://www.findagrave.com/memorial/257607240>**Gwendoline Davies**

1910 – 29 May 1955

Plot: PN-N4

<https://www.findagrave.com/memorial/259022885>**Hugh John Davies**

1946 – 1991

Plot: PW-C1

<https://www.findagrave.com/memorial/257313614>**Ivy Maud Davies**

1920 – 1998

Plot: PN-L5

<https://www.findagrave.com/memorial/257885481>**John Davies**

1866 – 6 Aug 1935

Plot: PC-F1

<https://www.findagrave.com/memorial/257646082>**John Davies**

1875 – 3 Mar 1952

Plot: PN-N4

<https://www.findagrave.com/memorial/259019715>**Joyce Davies**

1864 – 18 Jul 1897

Plot: PC-F1

<https://www.findagrave.com/memorial/257646004>**Kenneth Davies**

1918 – 1969

Plot: PN-L5

<https://www.findagrave.com/memorial/257885384>**Margaret Davies**

1893 – 1978

Plot: PN-L6

<https://www.findagrave.com/memorial/257885863>**Margaret Ray Davies**

1928 – 7 Mar 2000

Plot: PS-C7

<https://www.findagrave.com/memorial/257216876>

Margaret Rose Davies

26 Sep 1935 – 31 Jul 2014

Plot: PW-B1

<https://www.findagrave.com/memorial/257277609>**Mary Davies**

1856 – 13 Jan 1897

Plot: PE2-D8

<https://www.findagrave.com/memorial/258228643>**Mary Ann Davies**

1883 – 6 Oct 1933

Plot: PN-N4

<https://www.findagrave.com/memorial/259022571>**Morgan William Davies**

1889 – 1923

Plot: PN-L6

<https://www.findagrave.com/memorial/257885816>**Nellie Franklin Davies**

1886 – 1968

Plot: PN-E3

<https://www.findagrave.com/memorial/257592206>**Richard Davies**

1859 – 1923

Plot: PN-L5

<https://www.findagrave.com/memorial/257885542>**Robert John Davies**

1954 – 18 Jun 1958

Plot: PN-F1

<https://www.findagrave.com/memorial/257604164>**Sarah Louise Davies**

1 Sep 2012 – 1 Sep 2012

Plot: PW-B13

<https://www.findagrave.com/memorial/249615849>**Spencer Davies**

1915 – 7 Oct 2000

Plot: PS-C7

<https://www.findagrave.com/memorial/257216909>**Thomas Davies**

1893 – 4 Oct 1899

Plot: PC-F1

<https://www.findagrave.com/memorial/257646160>

Thomas Brinley Davies

1917 – 1999

Plot: PN-I5

<https://www.findagrave.com/memorial/257641340>

William John Davies

1909 – 12 Aug 1965

Plot: PN-E1

<https://www.findagrave.com/memorial/257589808>

Denis Deasy

1923 – 1988

Plot: PW-D10

<https://www.findagrave.com/memorial/257332217>

Dennis Deasy

1885 – 1960

Plot: PW-D10

<https://www.findagrave.com/memorial/257332175>

Harriet Deasy

1887 – 1967

Plot: PW-D10

<https://www.findagrave.com/memorial/257332191>

Joyce Elizabeth Deasy

1927 – 2015

Plot: PW-D10

<https://www.findagrave.com/memorial/257332237>

Roger Delfryn

1926 – 6 Sep 1985

Plot: PE2-E8

<https://www.findagrave.com/memorial/258236218>

Pamela Downs

5 Jul 1946 – Sep 2000

Plot: PS-C10

<https://www.findagrave.com/memorial/257217499>

Mary Jane Drew

1887 – 10 Aug 1968

Plot: PW-C5

<https://www.findagrave.com/memorial/257316093>

Anthony Francis Duffy

15 Aug 1931 – 14 Jan 2009

Plot: PS-D14

<https://www.findagrave.com/memorial/257241799>

Jean Alvina Dunn

1925 – 13 Jul 1988

Plot: PN-E6

<https://www.findagrave.com/memorial/257592542>**Joseph Dunn**

1922 – 24 Feb 1971

Plot: PN-E6

<https://www.findagrave.com/memorial/257592508>**Andrea Glynis Hurley Edwards**

1957 – 2011

Plot: PS-B11

<https://www.findagrave.com/memorial/257278266>**Annie Edwards**

1901 – 3 May 1960

Plot: PN-H7

<https://www.findagrave.com/memorial/257630580>**Edith May Edwards**

unknown – 6 Nov 1953

Plot: PW-D11

<https://www.findagrave.com/memorial/257332301>**Gwyneth Viola Edwards**

1932 – 9 Mar 2013

Plot: PW-B10

<https://www.findagrave.com/memorial/257306657>**James Cyril "Jim" Edwards**

1926 – 23 Aug 1971

Plot: PW-B10

<https://www.findagrave.com/memorial/257306631>**Jason Mark Edwards**

1972 – 1993

Plot: PW-D1

<https://www.findagrave.com/memorial/257331477>**Reginald Rowland Edwards**

1921 – 2 Jul 1999

Plot: PN-E8

<https://www.findagrave.com/memorial/257592873>**Samuel Edwards**

1896 – 13 Apr 1948

Plot: PN-H7

<https://www.findagrave.com/memorial/257630508>

William Edwards

1890 – 29 Nov 1960

Plot: PW-D11

<https://www.findagrave.com/memorial/257332350>

Brian Idris Emanuel

1951 – 15 Aug 2016

Plot: PN-K12

<https://www.findagrave.com/memorial/257694646>

Catherine "Katie" Emmanuel

2 Apr 1913 – 6 Jan 1917

Plot: PC-I2

<https://www.findagrave.com/memorial/207739884>

Charlotte Ivorine Emmanuel

23 Feb 1916 – 28 Aug 1916

Plot: PC-I2

<https://www.findagrave.com/memorial/207740186>

Iris Carrick Emmanuel

24 Oct 1963 – 24 Dec 2022

Plot: PS-E17M

<https://www.findagrave.com/memorial/248807725>

Lucy Elizabeth Pritchard Emmanuel

21 Jul 1928 – 23 Mar 1988

Plot: PW-C7

<https://www.findagrave.com/memorial/188070376>

Rees Emmanuel

20 Jan 1878 – 24 Aug 1965

<https://www.findagrave.com/memorial/207740007>

Robert Emmanuel

1 Nov 1952 – 17 Jan 1953

Plot: PW-D13

<https://www.findagrave.com/memorial/248808190>

William John Emmanuel

1901 – 31 Jan 1905

Plot: PC-I2

<https://www.findagrave.com/memorial/207740112>

Ann Evans

1883 – 5 Feb 1953

Plot: PC-A1

<https://www.findagrave.com/memorial/258266682>

Annie Catherine Evans

1902 – 1975

Plot: PE2-B6

<https://www.findagrave.com/memorial/258118549>**Dennis John Evans**

1924 – 19 Mar 2012

Plot: PN-J10

<https://www.findagrave.com/memorial/268944279>**Dwyfor L Evans**

1950 – 2007

Plot: PN-I6

<https://www.findagrave.com/memorial/257641604>**Emily Evans**

1887 – 30 Jan 1957

Plot: PN-L1

<https://www.findagrave.com/memorial/257882172>**Esme Irene Griffiths King Evans**

1926 – 9 Dec 1980

Plot: PN-J10

<https://www.findagrave.com/memorial/268944207>**Frank Evans**

1893 – 1951

Plot: PE2-B6

<https://www.findagrave.com/memorial/258118465>**Gwyneth Evans**

1921 – 1999

Plot: PS-C3

<https://www.findagrave.com/memorial/257214759>**Ieuan John Evans**

1950 – 27 Oct 2002

Plot: PE1-A3

<https://www.findagrave.com/memorial/258063856>**Jay Evans**

1983 – 31 Aug 1983

Plot: PN-C4

<https://www.findagrave.com/memorial/257508969>**Mary Evans**

Dates unknown

Plot: PF-C2

<https://www.findagrave.com/memorial/258825567>

Mary Jane Evans

1907 – 3 Feb 1958

Plot: PC-A1

<https://www.findagrave.com/memorial/258266843>**Morris John Evans**

1893 – 29 Sep 1960

Plot: PN-L1

<https://www.findagrave.com/memorial/257882233>**Robert Evans**

1883 – 4 Dec 1964

Plot: PC-A1

<https://www.findagrave.com/memorial/258266769>**Roy Evans**

1933 – 10 Mar 2008

Plot: PS-D11

<https://www.findagrave.com/memorial/257241882>**Stephen Michael Evans**

Jul 2005 – 28 Dec 2005

Plot: PW-A4

<https://www.findagrave.com/memorial/257305435>**Thomas James Evans**

7 Jul 1934 – 3 May 2005

Plot: PN-C4

<https://www.findagrave.com/memorial/257511396>**Verona Evans**

unknown – 1950

Plot: PN-J10

<https://www.findagrave.com/memorial/268961445>**Vivian Evans**

1916 – 2000

Plot: PS-C3

<https://www.findagrave.com/memorial/257214778>**Sarah Ann Daniels Eynon**

11 Jul 1899 – 2 Feb 1976

Plot: PN-L2

<https://www.findagrave.com/memorial/257882549>**William Harry Eynon**

23 Feb 1898 – 30 Jul 1959

Plot: PN-L2

<https://www.findagrave.com/memorial/257882493>

William John Eynon

Dates unknown

Plot: PN-L2

<https://www.findagrave.com/memorial/257882612>



Arthur Ford

1929 – 1 Apr 1989

Plot: PS-A9

<https://www.findagrave.com/memorial/257095246>



Dorothy Ford

unknown – 4 Oct 2017

Plot: PS-A9

<https://www.findagrave.com/memorial/257095368>



Frederick George Foy

1920 – 1990

Plot: PE2-B6

<https://www.findagrave.com/memorial/258118615>



Nina Marian Foy

1928 – 2014

Plot: PE2-B6

<https://www.findagrave.com/memorial/258118690>



Mary Francis

1864 – 3 Apr 1911

Plot: PE2-B7

<https://www.findagrave.com/memorial/258119245>



Samuel Francis

1865 – 13 Mar 1900

Plot: PE2-B7

<https://www.findagrave.com/memorial/258119148>



Thomas Francis

1892 – 30 Jan 1911

Plot: PE2-B7

<https://www.findagrave.com/memorial/258119336>



Arthur E Frater

1936 – 21 Mar 1999

Plot: PS-C2

<https://www.findagrave.com/memorial/257214717>



Clive Frater

1944 – 2021

Plot: PN-I8

<https://www.findagrave.com/memorial/257662843>



David Charles Frater

1917 – 1990

Plot: PN-I8

<https://www.findagrave.com/memorial/257662749>

Dorothy Gertrude Frater

1922 – 1985

Plot: PW-D2

<https://www.findagrave.com/memorial/257331591>

Dulcie Maud Frater

1920 – 1945

Plot: PN-I8

<https://www.findagrave.com/memorial/257662707>

Edward Frater

1889 – 29 Dec 1957

Plot: PW-C12

<https://www.findagrave.com/memorial/257335473>

Elizabeth Lewis Frater

1895 – 10 May 1963

Plot: PW-C12

<https://www.findagrave.com/memorial/257335518>

JOYCE Frater

1921 – 1993

Plot: PN-I8

<https://www.findagrave.com/memorial/257662806>

Marlene Frater

1938 – 14 Mar 2013

Plot: PS-C2

<https://www.findagrave.com/memorial/257214729>

Oliver Frederick Frater

1915 – 1986

Plot: PW-D2

<https://www.findagrave.com/memorial/257331622>

Annie Gavin

1897 – 1 Jul 1906

Plot: PE2-E10

<https://www.findagrave.com/memorial/258237383>

John Herbert Gay

1915 – 17 Mar 1994

Plot: PS-B10

<https://www.findagrave.com/memorial/257169630>

Sarah Anne Gay

1920 – 19 Feb 2002

Plot: PS-B10

<https://www.findagrave.com/memorial/257169704>**Stephen Mark George**

1967 – 27 Aug 1972

Plot: PE2-E5

<https://www.findagrave.com/memorial/258233085>**Irma De Giorgi**

1924 – 13 Jun 2002

Plot: PW-B3

<https://www.findagrave.com/memorial/257306263>**Salvatore De Giorgi**

1918 – 1 Feb 1978

Plot: PW-B3

<https://www.findagrave.com/memorial/257306245>**Elizabeth Ann Gower**

1908 – 14 Mar 1987

Plot: PC-B2

<https://www.findagrave.com/memorial/258257239>**John Gower**

1898 – 8 Jun 1977

Plot: PC-B2

<https://www.findagrave.com/memorial/258257183>**Cecil Gravell**

1922 – 5 Jan 1986

Plot: PN-F8

<https://www.findagrave.com/memorial/257606799>**Daniel Gravell**

16 Jun 1909 – 26 Sep 1995

Plot: PC-C4

<https://www.findagrave.com/memorial/258276383>**David James Gravell**

29 Dec 1964 – 30 Oct 1995

Plot: PS-B7

<https://www.findagrave.com/memorial/257169290>**David John Gravell**

1896 – 8 Oct 1962

Plot: PN-F8

<https://www.findagrave.com/memorial/257606680>

EDITH EIRWEN Lockett Gravell

Oct 1926 – 30 Sep 2021

Plot: PN-B3

<https://www.findagrave.com/memorial/257381318>



Elizabeth Gravell

1897 – 22 Dec 1972

Plot: PN-F8

<https://www.findagrave.com/memorial/257606724>



Joseph "Jaff" Gravell

2 Aug 1917 – 27 Feb 1994

Plot: PN-B3

<https://www.findagrave.com/memorial/257381250>



Lizzie Mary Lloyd Gravell

5 Jul 1909 – 27 Aug 1982

Plot: PC-C4

<https://www.findagrave.com/memorial/258276348>



Myra Gravell

1932 – 29 Aug 2008

Plot: PC-C4

<https://www.findagrave.com/memorial/258276591>



William John Gravell

28 Nov 1936 – 23 Mar 2005

Plot: PS-B7

<https://www.findagrave.com/memorial/257169369>



Adele Mary Gravelle

Jan 1951 – 8 Jul 1965

Plot: PN-H6

<https://www.findagrave.com/memorial/257629883>



Annie Gravelle

1912 – 1986

Plot: PN-H6

<https://www.findagrave.com/memorial/257630248>



Paul Wayne Gravelle

Dates unknown

Plot: PN-H6

<https://www.findagrave.com/memorial/257630062>



Stanley Gravelle

1914 – 1987

Plot: PN-H6

<https://www.findagrave.com/memorial/257630350>



Bernard Richard Green

29 Feb 1920 – 27 Dec 2009

Plot: PN-D10

<https://www.findagrave.com/memorial/257589502>

Elizabeth Green

1862 – 21 Oct 1914

Plot: PN-M6

<https://www.findagrave.com/memorial/258132156>

Elsie Millecent Green

1902 – 1994

Plot: PN-D9

<https://www.findagrave.com/memorial/257589406>

John Richard Green

1896 – 1980

Plot: PN-D9

<https://www.findagrave.com/memorial/257589394>

Marian Lloyd Green

11 Jul 1920 – 23 Dec 1995

Plot: PN-D10

<https://www.findagrave.com/memorial/257589485>

W J Green

1870 – 26 Apr 1923

Plot: PN-M6

<https://www.findagrave.com/memorial/258132183>

Anne E.C Griffiths

1924 – 29 Jan 1989

Plot: PS-A11

<https://www.findagrave.com/memorial/257095938>

Annie Letitia Griffiths

1920 – 18 Jan 1934

Plot: PN-N8

<https://www.findagrave.com/memorial/257904585>

Annie Mary Griffiths

unknown – 20 Jan 1975

Plot: PN-K1

<https://www.findagrave.com/memorial/258299882>

Benjamin Griffiths

1910 – 1983

Plot: PN-G6

<https://www.findagrave.com/memorial/257619667>

Beryl Griffiths

1917 – 1940

Plot: PL-A3

<https://www.findagrave.com/memorial/258737330>**Catherine Griffiths**

1890 – 14 Mar 1969

Plot: PN-N8

<https://www.findagrave.com/memorial/257904529>**Daniel Tom Griffiths**

1917 – 1989

Plot: PN-G6

<https://www.findagrave.com/memorial/257619641>**Edward Griffiths**

1889 – 13 Nov 1959

Plot: PN-N8

<https://www.findagrave.com/memorial/257904471>**Eliza Griffiths**

1885 – 1968

Plot: PF-A3

<https://www.findagrave.com/memorial/258734952>**Emrys Griffiths**

1924 – 1989

Plot: PS-A6

<https://www.findagrave.com/memorial/257094815>**Esther Griffiths**

1885 – 1950

Plot: PN-G6

<https://www.findagrave.com/memorial/257619568>**Henry T Griffiths**

1895 – 1977

Plot: PN-I6

<https://www.findagrave.com/memorial/257641516>**Jemima Griffiths**

1894 – 1973

Plot: PN-I6

<https://www.findagrave.com/memorial/257641477>**John Henry Griffiths**

1891 – 13 Sep 1960

Plot: PN-J1

<https://www.findagrave.com/memorial/257732121>

Llewellyn Griffiths

unknown – 3 Jun 1932

Plot: PN-K1

<https://www.findagrave.com/memorial/258299296>



Margaret Edith Griffiths

1919 – 1997

Plot: PN-K1

<https://www.findagrave.com/memorial/258300045>



Mary Griffiths

1853 – 13 Feb 1946

Plot: PN-H3

<https://www.findagrave.com/memorial/257622061>



Mary Griffiths

1892 – 8 Nov 1975

Plot: PN-J1

<https://www.findagrave.com/memorial/257732215>



Melvin Griffiths

1921 – 29 Jan 2004

Plot: PS-A11

<https://www.findagrave.com/memorial/257096087>



Olive Grace Griffiths

1917 – 1987

Plot: PS-A15

<https://www.findagrave.com/memorial/257142733>



Paul Anthony Griffiths

1966 – 12 Oct 2016

Plot: PC-A10

<https://www.findagrave.com/memorial/258252151>



Peter John Griffiths

1949 – 10 Nov 2002

Plot: PS-A11

<https://www.findagrave.com/memorial/257096168>



Peter Lynford Griffiths

1940 – 2011

Plot: PW-B12

<https://www.findagrave.com/memorial/257306906>



Robert Bryan Griffiths

1964 – 4 Jan 1983

Plot: PC-A10

<https://www.findagrave.com/memorial/258252128>



Samuel Griffiths

1887 – 1952

Plot: PN-G6

<https://www.findagrave.com/memorial/257619553>**Stanley Griffiths**

1882 – 1968

Plot: PF-A3

<https://www.findagrave.com/memorial/258734180>**Sylvia Griffiths**

unknown – 22 Nov 2024

<https://www.findagrave.com/memorial/281835251>**Brynley Howard Guest**

1920 – 1984

Plot: PW-C9

<https://www.findagrave.com/memorial/257331298>**Kenneth Phillip Guest**

1953 – 9 Jan 1993

Plot: PS-B14

<https://www.findagrave.com/memorial/257214412>**Mary Guest**

1921 – 1981

Plot: PW-C9

<https://www.findagrave.com/memorial/257331264>**Michael Joseph Howard Guest**

1952 – 1954

Plot: PW-C9

<https://www.findagrave.com/memorial/257331326>**Bridget Gwynne**

1867 – 28 Jan 1945

Plot: PC-F3

<https://www.findagrave.com/memorial/258423653>**William Gwynne**

1864 – 27 Dec 1908

Plot: PC-F3

<https://www.findagrave.com/memorial/258423589>**Ernest Hackford**

17 Mar 1882 – 2 Dec 1939

Plot: PN-J6

<https://www.findagrave.com/memorial/268925715>

Jane Jones Hackford

27 Apr 1877 – 17 Mar 1955

Plot: PN-J6

<https://www.findagrave.com/memorial/268925740>



Catherine Letitia Hancock

1931 – 19 Feb 1998

Plot: PS-B1

<https://www.findagrave.com/memorial/257151459>



Edward "Eddy" Hancock

25 Dec 1913 – 4 Mar 1985

Plot: PN-K12

<https://www.findagrave.com/memorial/257694363>



Eliza John Hancock

14 Aug 1879 – 23 Sep 1955

Plot: PN-K8

<https://www.findagrave.com/memorial/257674204>



Gwladys "Gladys" Griffiths Hancock

14 Nov 1906 – 23 Sep 1970

Plot: PN-K11

<https://www.findagrave.com/memorial/257693966>



James Nathaniel "Jimmy" Hancock

19 Aug 1937 – 10 Dec 2001

Plot: PN-K11

<https://www.findagrave.com/memorial/257694216>



Joan Kathleen "Sally" Prior Hancock

1923 – 17 Aug 2011

Plot: PN-K12

<https://www.findagrave.com/memorial/257694426>



John Thomas "Jack" Hancock

29 Oct 1906 – 2 Jan 1965

Plot: PN-K11

<https://www.findagrave.com/memorial/257693929>



Nathaniel Hancock

22 Jan 1877 – 8 Jan 1937

Plot: PN-K8

<https://www.findagrave.com/memorial/257674115>



Peter Bevan Hancock

19 Mar 1935 – 12 Jun 1997

Plot: PN-K11

<https://www.findagrave.com/memorial/257694154>



Ronald Dunn Hancock

1928 – 16 Feb 2021

Plot: PS-B1

<https://www.findagrave.com/memorial/257151553>**Rev Daniel Harries**

1888 – 1930

Plot: PF-C9

<https://www.findagrave.com/memorial/258843031>**David Harries**

1884 – 17 Oct 1955

Plot: PF-C7

<https://www.findagrave.com/memorial/258840801>**Ivor Tudor Harries**

1894 – 26 Feb 1969

Plot: PE2-C6

<https://www.findagrave.com/memorial/258189934>**Margaret Harries**

1883 – 23 Oct 1916

Plot: PF-C7

<https://www.findagrave.com/memorial/258840539>**Mary Ann Harris**

1889 – 13 Dec 1970

Plot: PF-C4

<https://www.findagrave.com/memorial/258830441>**William Harris**

1890 – 18 Oct 1959

Plot: PF-C4

<https://www.findagrave.com/memorial/258830148>**Annie Harry**

1864 – 4 Feb 1910

Plot: PF-C8

<https://www.findagrave.com/memorial/258841237>**William David Harry**

1862 – 26 Nov 1932

Plot: PF-C8

<https://www.findagrave.com/memorial/258841068>**John Edward Havard**

1929 – 17 Oct 2000

Plot: PW-A7

<https://www.findagrave.com/memorial/257306182>

Kay Havard

1939 – 4 May 1975

Plot: PW-A7

<https://www.findagrave.com/memorial/257305673>

Harry Herdman

1915 – 25 Jun 1977

Plot: PN-D4

<https://www.findagrave.com/memorial/257588962>

Sarah Herdman

1918 – 27 Jan 1997

Plot: PN-D4

<https://www.findagrave.com/memorial/257589028>

Alan G Hill

1923 – 20 Feb 1992

Plot: PS-A4

<https://www.findagrave.com/memorial/257305408>

Hubert Raymond Hobby

1921 – 1991

Plot: PS-A2

<https://www.findagrave.com/memorial/257093895>

Margaret Ethel Hobby

1923 – 2008

Plot: PS-A2

<https://www.findagrave.com/memorial/257094024>

Ann Williams Howells

19 May 1883 – 11 Jun 1956

Plot: PC-H1

<https://www.findagrave.com/memorial/207739557>

Nancy Howells

1917 – 30 Nov 2008

Plot: PS-C17

<https://www.findagrave.com/memorial/257241391>

William Howells

1882 – 8 Apr 1906

Plot: PC-H1

<https://www.findagrave.com/memorial/194505513>

William Mervyn Howells

27 Sep 1911 – 7 Jul 2001

Plot: PS-C17

<https://www.findagrave.com/memorial/257241367>

Catherine Hughes

1895 – Aug 1933

Plot: PN-O6

<https://www.findagrave.com/memorial/232789317>



Gwyn Mostyn Hughes

1921 – Jun 1938

Plot: PN-O6

<https://www.findagrave.com/memorial/232789421>



James Hughes

1874 – 19 Sep 1946

Plot: PN-P1

<https://www.findagrave.com/memorial/232772220>



John Esiah Hughes

1897 – Jan 1952

Plot: PN-O6

<https://www.findagrave.com/memorial/232789345>



John Lloyd Hughes

1930 – May 1938

Plot: PN-O6

<https://www.findagrave.com/memorial/232789404>



Maggie Hughes

1901 – 5 Mar 1985

Plot: PN-P1

<https://www.findagrave.com/memorial/232772541>



Margaret Hughes

1871 – 27 Jan 1931

Plot: PN-P1

<https://www.findagrave.com/memorial/232771575>



Brian Hurley

Dates unknown

Plot: PF-A10

<https://www.findagrave.com/memorial/258747377>



Catherine Mary "Kitty" Anthony Hurley

1929 – 19 Apr 2009

Plot: PS-C6

<https://www.findagrave.com/memorial/256126810>



Dean Hurley

Dates unknown

Plot: PF-A10

<https://www.findagrave.com/memorial/258747213>



Mary Teresa Hurley

1938 – 14 Apr 2005

Plot: PS-B11

<https://www.findagrave.com/memorial/257169955>**Michael John Henry "Jack" Hurley**

18 Sep 1926 – 23 Mar 1999

Plot: PS-C6

<https://www.findagrave.com/memorial/256126775>**Susan Hurley**

1903 – 1940

Plot: PF-A10

<https://www.findagrave.com/memorial/255937974>**Thomas Denzil Hurley**

1949 – 2016

Plot: PS-E8M

<https://www.findagrave.com/memorial/255937778>**William Daniel Hurley**

1935 – 26 Jan 1994

Plot: PS-B11

<https://www.findagrave.com/memorial/255937846>**Herbert Henry Hurlston**

1914 – 17 Jul 1987

Plot: PS-A17

<https://www.findagrave.com/memorial/257142788>**Iris Millicent "Milly" Hurlston**

1917 – 6 Apr 2015

Plot: PS-A17

<https://www.findagrave.com/memorial/257142862>**David Hutchings**

20 Mar 1946 – 16 May 2019

Plot: PE1-B3

<https://www.findagrave.com/memorial/258064584>**Edith Hutchings**

7 Nov 1943 – 16 Mar 2002

Plot: PE1-B3

<https://www.findagrave.com/memorial/258064530>**Amelia Louise James**

Dates unknown

Plot: PS-D6

<https://www.findagrave.com/memorial/257245613>

Barbara James

7 Sep 1951 – 28 Dec 2021

Plot: PS-D6

<https://www.findagrave.com/memorial/257245487>**Bleddyn James**

4 Sep 1982 – 19 Nov 2020

Plot: PS-E12M

<https://www.findagrave.com/memorial/256126607>**David Raymond James**

1876 – 2 Apr 1944

Plot: PF-A6

<https://www.findagrave.com/memorial/258746189>**David Raymond James**

1907 – 2 May 1941

Plot: PF-A6

<https://www.findagrave.com/memorial/258746319>**Doris Irene Teague James**

1905 – 2 Feb 1948

Plot: PS-A19

<https://www.findagrave.com/memorial/256310233>**Frank James**

1935 – 21 Feb 2019

Plot: PN-B1

<https://www.findagrave.com/memorial/257380788>**Kenneth Raymond James**

9 Dec 1952 – 29 Mar 1974

Plot: PW-B6

<https://www.findagrave.com/memorial/248019630>**Lottie Lorraine Cole James**

16 Oct 1915 – 6 Jul 2004

<https://www.findagrave.com/memorial/269097154>**Martha Ann James**

1883 – 1 Jul 1962

Plot: PF-A6

<https://www.findagrave.com/memorial/258746247>**Mary P Gardner James**

9 Apr 1929 – 10 Aug 2017

Plot: PS-E9M

<https://www.findagrave.com/memorial/257247021>

<https://www.findagrave.com/memorial/299070628>

Susan Ann James

unknown – 12 Mar 2011

Plot: PS-D3

<https://www.findagrave.com/memorial/257245936>



Thomas George "George-" James

Oct 1941 – 19 Mar 2010

<https://www.findagrave.com/memorial/269099381>



Thomas John James

1903 – 17 Apr 1945

Plot: PS-A19

<https://www.findagrave.com/memorial/256310181>



Thomas Joseph James

Oct 1971 – 14 Aug 2011

Plot: PW-B6

<https://www.findagrave.com/memorial/248019487>



Thomas Raymond "Ray" James

1933 – 4 Jun 2015

Plot: PW-B6

<https://www.findagrave.com/memorial/248019716>



William Henry "John" James

1938 – 16 Feb 2002

Plot: PS-D3

<https://www.findagrave.com/memorial/257245900>



William John "Willy" James

19 Mar 1951 – 16 Jun 2003

Plot: PS-D6

<https://www.findagrave.com/memorial/257245439>



William John James

21 Dec 1910 – 23 Apr 1963

<https://www.findagrave.com/memorial/269097488>



Alcwyn Jenkins

2 Feb 1941 – 8 Nov 2015

Plot: PE1-C2

<https://www.findagrave.com/memorial/258088449>



David Manfred Jenkins

16 Sep 1964 – 2 Feb 1997

<https://www.findagrave.com/memorial/258088381>



Plot: PE1-C2

<https://www.findagrave.com/memorial/258088381>

Dilwyn Richard Cornelius Jenkins

1934 – 24 Aug 1979

Plot: PN-J8

<https://www.findagrave.com/memorial/268941865>**Eira Jenkins**

1937 – 1944

Plot: PS-B18

<https://www.findagrave.com/memorial/257196969>**Eric Victor Jenkins**

1932 – 2000

Plot: PS-B18

<https://www.findagrave.com/memorial/257197090>**Esther Ann Lewis Jenkins**

13 Jun 1904 – 18 Jul 1977

<https://www.findagrave.com/memorial/268935474>**Jennie Jenkins**

1890 – 9 Sep 1937

Plot: PE2-D9

<https://www.findagrave.com/memorial/258229227>**Lilian Muriel Jenkins**

unknown – 26 Jun 1945

Plot: PE2-D9

<https://www.findagrave.com/memorial/258229514>**Maldwyn Jenkins**

31 May 1918 – 3 Feb 1991

Plot: PE2-D9

<https://www.findagrave.com/memorial/258229564>**Nora E Jenkins**

1898 – 1952

Plot: PS-B18

<https://www.findagrave.com/memorial/257197016>**Thomas John Jenkins**

30 Apr 1899 – 23 Apr 1941

Plot: PN-J8

<https://www.findagrave.com/memorial/268929471>**Thomas William Jenkins**

unknown – 2 Nov 1942

Plot: PE2-D9

<https://www.findagrave.com/memorial/258229273>

William Jenkins

1898 – 1962

Plot: PS-B18

<https://www.findagrave.com/memorial/257214612>

John Alfred James Jewell

1922 – 22 Nov 2005

Plot: PS-D10

<https://www.findagrave.com/memorial/257241922>

Kevin Michael Jewell

11 Apr 1967 – 3 Apr 2015

Plot: PS-D10

<https://www.findagrave.com/memorial/257241968>

Ruby Jewell

11 Jun 1926 – 23 Oct 2014

Plot: PS-D10

<https://www.findagrave.com/memorial/257241934>

Annie John

1890 – 16 May 1915

Plot: PC-B6

<https://www.findagrave.com/memorial/258258724>

Annie Marie John

1928 – 1999

Plot: PN-E7

<https://www.findagrave.com/memorial/257592687>

Annie Rose John

1894 – 5 Aug 1977

Plot: PF-C3

<https://www.findagrave.com/memorial/258826399>

Haydn Colin John

1926 – 1971

Plot: PN-E7

<https://www.findagrave.com/memorial/257592642>

Ivor John

3 Mar 1898 – 2 Sep 1961

Plot: PN-F7

<https://www.findagrave.com/memorial/257606413>

John John

1834 – 23 Jun 1899

Plot: PC-B3

<https://www.findagrave.com/memorial/258257558>

John John

1861 – 2 Apr 1910

Plot: PC-B4

<https://www.findagrave.com/memorial/258258000>**Lily Rosser John**

30 Jun 1899 – 4 Jan 1969

Plot: PN-F7

<https://www.findagrave.com/memorial/257606473>**Margaret John**

1881 – 18 May 1935

Plot: PC-C1

<https://www.findagrave.com/memorial/258267715>**Margaret John**

1804 – 21 Nov 1878

Plot: PC-I1

<https://www.findagrave.com/memorial/258499849>**Mary John**

1834 – 23 May 1918

Plot: PC-B3

<https://www.findagrave.com/memorial/258257666>**Robert John**

1728 – 30 Dec 1801

Plot: PE2-A3

<https://www.findagrave.com/memorial/259427547>**William John**

1808 – 1878

Plot: PC-I1

<https://www.findagrave.com/memorial/194423515>**William John**

1867 – 14 May 1948

Plot: PC-C1

<https://www.findagrave.com/memorial/258267765>**William John**

Dates unknown

Plot: PC-B6

<https://www.findagrave.com/memorial/258258770>**William John**

1865 – 21 Mar 1901

Plot: PC-B4

<https://www.findagrave.com/memorial/258257938>

William Thomas John

1894 – 29 Jun 1961

Plot: PF-C3

<https://www.findagrave.com/memorial/258826153>



Elizabeth Rees Johns

31 Dec 1875 – 5 Jul 1944

Plot: PN-J2

<https://www.findagrave.com/memorial/268901371>



Lily Alberta Onslow Johns

11 Dec 1897 – 28 Jun 1975

Plot: PN-J2

<https://www.findagrave.com/memorial/268901386>



Violet Eileen Johns

1911 – 14 Jan 1937

Plot: PN-J2

<https://www.findagrave.com/memorial/268901352>



William Johns

12 Jan 1875 – 22 Oct 1941

Plot: PN-J2

<https://www.findagrave.com/memorial/268901361>



Beryl Jane Margaret Jones

1920 – 1992

Plot: PW-D6

<https://www.findagrave.com/memorial/257331720>



Blodwen Jones

1914 – 11 May 1998

Plot: PW-C4

<https://www.findagrave.com/memorial/257315674>



Carol Dorothy Jones

1960 – 1988

Plot: PW-A1

<https://www.findagrave.com/memorial/257305304>



Carole Jones

Dec 1940 – 31 Dec 1940

Plot: PN-K10

<https://www.findagrave.com/memorial/257863176>



David Jones

1854 – 25 Nov 1940

Plot: PF-D3

<https://www.findagrave.com/memorial/258842681>



David Amber Jones

1880 – 1929

Plot: PE2-C7

<https://www.findagrave.com/memorial/258190854>

Rev David John Jones

1907 – 27 Mar 2000

Plot: PF-D5

<https://www.findagrave.com/memorial/258841651>

David Thomas Jones

1905 – 10 Aug 1911

Plot: PF-D3

<https://www.findagrave.com/memorial/258842773>

Denzil Jones

1925 – 2000

Plot: PS-C8

<https://www.findagrave.com/memorial/257216997>

Douglas Pugh Jones

1915 – 31 Oct 1978

Plot: PN-K10

<https://www.findagrave.com/memorial/257863121>

Eleanor Jones

1870 – 8 Mar 1941

Plot: PN-J7

<https://www.findagrave.com/memorial/268926184>

Emily Ann Jones

1889 – 26 Sep 1948

Plot: PN-M11

<https://www.findagrave.com/memorial/259018866>

Eris Raymond Jones

1923 – 1994

Plot: PW-B8

<https://www.findagrave.com/memorial/257306436>

Eunice Irene Jones

1923 – 2004

Plot: PW-B8

<https://www.findagrave.com/memorial/257306445>

Gerwyn Jones

1910 – 3 May 1996

Plot: PN-M15

<https://www.findagrave.com/memorial/257901270>

Gomer Jones

Jun 1886 – 12 Oct 1886

Plot: PE2-C6

<https://www.findagrave.com/memorial/258189803>



Handel Winston Jones

1915 – 1934

Plot: PE2-C7

<https://www.findagrave.com/memorial/258191019>



Ivorine Patricia Jones

1934 – 2017

Plot: PS-C8

<https://www.findagrave.com/memorial/257217021>



James Walter Jones

1880 – 23 Apr 1946

Plot: PN-M7

<https://www.findagrave.com/memorial/258133772>



John Jones

unknown – 10 Feb 1925

Plot: PN-J7

<https://www.findagrave.com/memorial/268926223>



John Jones

1891 – 9 Sep 1933

Plot: PN-M11

<https://www.findagrave.com/memorial/259018787>



John Jones

1855 – 14 Feb 1916

Plot: PE2-C6

<https://www.findagrave.com/memorial/258189749>



John Hamlyn Jones

1913 – 2 Jun 1971

Plot: PW-D6

<https://www.findagrave.com/memorial/257331698>



Kevin William Jones

1963 – 22 Dec 2010

Plot: PN-B5

<https://www.findagrave.com/memorial/257381552>



Margaret Ann Jones

1886 – 14 May 1952

Plot: PN-M4

<https://www.findagrave.com/memorial/257898424>



Margaret Eva Jones

1909 – 18 Dec 1982

Plot: PN-D8

<https://www.findagrave.com/memorial/257589337>



Mary Jones

1840 – 6 May 1928

Plot: PE2-C3

<https://www.findagrave.com/memorial/258186754>



Mary Jones

1898 – 25 Mar 1971

Plot: PN-O7

<https://www.findagrave.com/memorial/232788367>



Mary Jones

unknown – 4 Aug

Plot: PN-M7

<https://www.findagrave.com/memorial/258133695>



Mary Ann Jones

1891 – 4 Sep 1957

Plot: PF-D3

<https://www.findagrave.com/memorial/258842739>



R.C. Clifford Jones

1912 – 19 Jan 1975

Plot: PW-C4

<https://www.findagrave.com/memorial/257315602>



Rose Mildred Jones

1918 – 2 Nov 2011

Plot: PN-K10

<https://www.findagrave.com/memorial/257863146>



Sarah Jones

Dates unknown

Plot: PE2-C3

<https://www.findagrave.com/memorial/258186894>



Sarah Jones

1853 – 8 Feb 1938

Plot: PE2-C6

<https://www.findagrave.com/memorial/258189864>



Sarah Jones

1883 – 1935

Plot: PE2-C7

<https://www.findagrave.com/memorial/258190899>



Sarah Jones

1853 – 12 Nov 1938

Plot: PE2-C6

<https://www.findagrave.com/memorial/258189981>



Sophia Jones

1903 – 18 Jul 1980

Plot: PN-M15

<https://www.findagrave.com/memorial/257901240>



Thomas Jones

1848 – 24 Nov 1886

Plot: PE2-C3

<https://www.findagrave.com/memorial/258186734>



Thomas Jones

Dates unknown

Plot: PE2-C3

<https://www.findagrave.com/memorial/258186828>



Thomas Henry Jones

1908 – 29 Jul 1980

Plot: PN-D8

<https://www.findagrave.com/memorial/257589308>



William John Jones

1901 – 16 Aug 1976

Plot: PN-O7

<https://www.findagrave.com/memorial/232789285>



William Walter Jones

1887 – 6 Oct 1946

Plot: PN-M4

<https://www.findagrave.com/memorial/257898393>



Edward King

Sep 1961 – Jan 2021

Plot: PS-E13M

<https://www.findagrave.com/memorial/257247581>



Albert Edward Kingston

1921 – 1983

Plot: PN-C5

<https://www.findagrave.com/memorial/257517667>



Elizabeth Mary "Betty" Kingston

1920 – 1986

Plot: PN-C5

<https://www.findagrave.com/memorial/257521410>



Lily May Kirby

1915 – 27 Aug 2010

Plot: PN-J4

<https://www.findagrave.com/memorial/257672571>**Daisy Knight**

1917 – 1997

Plot: PS-A14

<https://www.findagrave.com/memorial/257142722>**Arthur Montgomery Ladd**

3 Feb 1943 – 10 Jan 2005

Plot: PS-D9

<https://www.findagrave.com/memorial/257242041>**Susan Elizabeth Ladd**

28 Jul 1947 – 5 Dec 2008

Plot: PS-D9

<https://www.findagrave.com/memorial/257242068>**Jordon Leigh**

unknown – 7 Nov 2007

Plot: PN-C3

<https://www.findagrave.com/memorial/257507430>**Annie Mary Lewis**

1902 – 1940

Plot: PN-K9

<https://www.findagrave.com/memorial/257863052>**Constance Olivia Lewis**

1929 – 19 Jan 2001

Plot: PS-C15

<https://www.findagrave.com/memorial/257241274>**David Lewis**

1816 – 18 Oct 1863

Plot: PC-B5

<https://www.findagrave.com/memorial/258258327>**Edna Roberts Lewis**

1921 – 1993

Plot: PS-B13

<https://www.findagrave.com/memorial/257177904>**Mima Lewis**

1904 – 28 Nov 1990

Plot: PC-B1

<https://www.findagrave.com/memorial/258252294>

Richard Lewis

1893 – 1958

Plot: PN-K9

<https://www.findagrave.com/memorial/257863065>**Robert David Lewis**

Mar 1943 – 17 Mar 1943

Plot: PN-K6

<https://www.findagrave.com/memorial/257863013>**George Ligertwood**

1878 – 19 Feb 1924

Plot: PF-B12

<https://www.findagrave.com/memorial/258752336>**Albert Liley**

1853 – 31 Jan 1917

Plot: PE2-D11

<https://www.findagrave.com/memorial/258183933>**Albert Henry Liley**

1888 – 16 Feb 1907

Plot: PE2-D11

<https://www.findagrave.com/memorial/258183794>**Catherine Ann Liley**

1889 – 23 Aug 1941

Plot: PN-I-2

<https://www.findagrave.com/memorial/257641186>**Henry Liley**

1892 – 28 Oct 1955

Plot: PN-12

<https://www.findagrave.com/memorial/257641204>**Jeanette "Janet" Liley**

1894 – 14 Aug 1911

Plot: PE2-D11

<https://www.findagrave.com/memorial/258183985>**Annie Lloyd**

1900 – 14 Jan 1986

Plot: PN-E2

<https://www.findagrave.com/memorial/257590038>**Annie Muriel Lloyd**

1912 – 11 Dec 1986

Plot: PC-C5

<https://www.findagrave.com/memorial/255938848>

Benjamin Lloyd

14 Nov 1893 – 11 Mar 1974

Plot: PN-L4

<https://www.findagrave.com/memorial/249334239>

**Blodwen Lloyd**

1891 – 28 Jan 1947

Plot: PN-I3

<https://www.findagrave.com/memorial/194036705>

**Catherine Lloyd**

1903 – 19 Apr 1987

Plot: PN-E2

<https://www.findagrave.com/memorial/257590062>

**Catherine Ann "Nancy" Jones Lloyd**

1927 – 1983

Plot: PS-E6M

<https://www.findagrave.com/memorial/256126690>

**Daniel Hugh Lloyd**

1930 – 2018

Plot: SP-B16

<https://www.findagrave.com/memorial/255937895>

**David Lloyd**

22 May 1866 – 25 Mar 1951

Plot: PN-H5

<https://www.findagrave.com/memorial/248831185>

**David Benjamin Lloyd**

1948 – 2000

Plot: PS-C12

<https://www.findagrave.com/memorial/255937871>

**David Bonnell Lloyd**

1926 – 23 May 1987

Plot: PN-I3

<https://www.findagrave.com/memorial/194036807>

**David Gwynfor Lloyd**

1920 – 1994

Plot: PS-A16

<https://www.findagrave.com/memorial/255937915>

**David Vincent Lloyd**

4 Nov 1938 – 28 Oct 2022

Plot: PS5 E20

<https://www.findagrave.com/memorial/281835158>



Dorothy Eileen "Dorri" Lloyd

1918 – 29 Oct 2011

Plot: PN-D3

<https://www.findagrave.com/memorial/255941849>



Eileen Lloyd

1944 – 2020

Plot: PF-A5

<https://www.findagrave.com/memorial/258746085>



Elizabeth "Lizzie" Lloyd

31 Oct 1882 – 29 May 1964

Plot: PC-F2

<https://www.findagrave.com/memorial/257645700>



Elizabeth Lloyd

1892 – 19 Nov 1965

Plot: PN-E2

<https://www.findagrave.com/memorial/255938074>



Gertrude Williams Lloyd

1897 – 5 Dec 1974

Plot: PN-L4

<https://www.findagrave.com/memorial/249345661>



Howell Handel Lloyd

1906 – 14 May 1977

Plot: PN-D3

<https://www.findagrave.com/memorial/255938093>



John Lloyd

1889 – 17 Jan 1943

Plot: PN-I3

<https://www.findagrave.com/memorial/194036604>



John Lloyd

1943 – 2008

Plot: PS-C12

<https://www.findagrave.com/memorial/255942236>



Lettice Lloyd

1853 – 29 Jul 1900

Plot: PC-A4

<https://www.findagrave.com/memorial/249919388>



Margaret Lloyd

1919 – 1987

Plot: PS-A16

<https://www.findagrave.com/memorial/255942111>



Mary Lloyd

1897 – 7 Dec 1965

Plot: PN-E2

<https://www.findagrave.com/memorial/257590005>**May Lloyd**

26 Jan 1904 – 19 Jun 1968

Plot: PN-H5

<https://www.findagrave.com/memorial/248840325>**Minnie Maud Lloyd**

1914 – 29 Nov 1978

Plot: PN-G4

<https://www.findagrave.com/memorial/249354163>**Pryce Lloyd**

1847 – 26 Nov 1917

Plot: PF-C6

<https://www.findagrave.com/memorial/255937936>**Rachel Ann Rees Lloyd**

1884 – 3 Jan 1937

Plot: PC-C5

<https://www.findagrave.com/memorial/255938792>**Richard Lloyd**

1900 – 25 Apr 1949

Plot: PN-G4

<https://www.findagrave.com/memorial/249333970>**Sarah Lloyd**

1886 – 17 Jul 1953

Plot: PN-G4

<https://www.findagrave.com/memorial/249354114>**Sarah David Lloyd**

5 Sep 1872 – 11 Nov 1946

Plot: PN-H5

<https://www.findagrave.com/memorial/248838849>**William Lloyd**

28 Apr 1886 – 5 Nov 1963

Plot: PC-C5

<https://www.findagrave.com/memorial/255938459>**William Alewyn Lloyd**

23 Sep 1927 – 13 Aug 1983

Plot: PS-E6M

<https://www.findagrave.com/memorial/256126654>

Mair Lord

1922 – 1998

Plot: PW-C2

<https://www.findagrave.com/memorial/257313748>**Thomas Lord**

1921 – 1985

Plot: PW-C2

<https://www.findagrave.com/memorial/257313704>**Elizabeth M Macleod**

1897 – 30 Jan 1978

Plot: PW-A2

<https://www.findagrave.com/memorial/257334799>**Jimmy Maddrick**

1920 – 27 Sep 1999

Plot: PS-A10

<https://www.findagrave.com/memorial/257095702>**Julia Maddrick**

1921 – 12 Dec 1989

Plot: PS-A10

<https://www.findagrave.com/memorial/257095535>**Gavin Malcolm**

1972 – 6 May 2003

Plot: PS-D5

<https://www.findagrave.com/memorial/257245678>**Thomas Malcolm**

1928 – 13 Mar 1992

Plot: PS-B17

<https://www.findagrave.com/memorial/257214548>**Thomas Malcolm**

1928 – 13 Mar 1992

Plot: PS-B17

<https://www.findagrave.com/memorial/257196870>**Kate Bethan Matthey**

4 May 1996 – 8 May 1996

Plot: PS-B6

<https://www.findagrave.com/memorial/257162600>**Morgan Williams McKibbin**

1920 – 1997

Plot: PN-O1

<https://www.findagrave.com/memorial/232789627>

Norah Kathleen McKibbin

1923 – 2018

Plot: PN-O1

<https://www.findagrave.com/memorial/232789641>**Catherine Williams Morgan**

8 Aug 1848 – 28 Oct 1903

Plot: PE2-E7

<https://www.findagrave.com/memorial/255939472>**Charles Morgan**

14 Jun 1841 – 21 Jun 1909

Plot: PE2-E7

<https://www.findagrave.com/memorial/255938386>**David Isaac Morgan**

1890 – 1966

Plot: PF-B3

<https://www.findagrave.com/memorial/258748839>**David John Morgan**

1903 – 12 May 1957

Plot: PN-I1

<https://www.findagrave.com/memorial/257641130>**David Treharne Morgan**

1918 – 13 Apr 1964

Plot: PN-H11

<https://www.findagrave.com/memorial/257631162>**Dorothy Muriel Morgan**

1924 – 14 Feb 2005

Plot: PN-H11

<https://www.findagrave.com/memorial/257631251>**Elsie May Morgan**

unknown – 28 Sep 1977

Plot: PN-D1

<https://www.findagrave.com/memorial/257588734>**Evan Richard Morgan**

unknown – 13 Aug 1977

Plot: PN-D1

<https://www.findagrave.com/memorial/257588750>**James Glyndwr Morgan**

16 Oct 1930 – 6 Mar 2000

Plot: PS-C5

<https://www.findagrave.com/memorial/257215013>

Margaret Morgan

1903 – 10 Apr 1985

Plot: PN-I1

<https://www.findagrave.com/memorial/257641145>**Margaret Williams Morgan**

1905 – 1969

Plot: PF-B3

<https://www.findagrave.com/memorial/258749019>**Sarah Morgan**

1880 – 12 Oct 1925

Plot: PN-L8

<https://www.findagrave.com/memorial/257886715>**Sarah Morgan**

5 Mar 1890 – 27 Sep 1893

Plot: PE2-E7

<https://www.findagrave.com/memorial/255939987>**Sarah David Morgan**

1879 – 1946

Plot: PE2-B6

<https://www.findagrave.com/memorial/258118346>**William Morgan**

1873 – 1944

Plot: PE2-B6

<https://www.findagrave.com/memorial/258118278>**William Charles Morgan**

1899 – 1900

Plot: PE2-B6

<https://www.findagrave.com/memorial/258118189>**Gwilym R Morgans**

unknown – 31 ???

Plot: PN-G2

<https://www.findagrave.com/memorial/257618231>**Janet Mary Morgans**

1954 – 4 Jul 2011

Plot: PN-G2

<https://www.findagrave.com/memorial/257618315>**Joan Morgans**

Dates unknown

Plot: PN-G2

<https://www.findagrave.com/memorial/257618288>

Catherine Louise Moulder

1879 – 15 Nov 1954

Plot: PN-C8

<https://www.findagrave.com/memorial/257621048>**Thomas Henry Moulder**

1885 – 20 Oct 1963

Plot: PN-C8

<https://www.findagrave.com/memorial/257621092>**Robert Muir**

1934 – 13 Jan 1997

Plot: PS-B5

<https://www.findagrave.com/memorial/257157040>**John Henry Nelson**

1964 – 2009

Plot: PS-E5M

<https://www.findagrave.com/memorial/257246654>**Margaret Ann Nelson**

1912 – 21 Jan 2003

Plot: PN-F3

<https://www.findagrave.com/memorial/257605129>**Margaret Evelyn Nelson**

1940 – 31 Dec 1993

Plot: PN-F3

<https://www.findagrave.com/memorial/257605232>**Ricky Nelson**

Dates unknown

Plot: PS-E4M

<https://www.findagrave.com/memorial/257246507>**William John Nelson**

1900 – 25 Jan 1959

Plot: PN-F3

<https://www.findagrave.com/memorial/257605032>**Edith Maud Newman**

1903 – 1991

Plot: PN-C1

<https://www.findagrave.com/memorial/257464862>**Walter Edward Newman**

1902 – 1980

Plot: PN-C1

<https://www.findagrave.com/memorial/257464197>

Joseph Northey

unknown – 12 Oct 1927

Plot: PF-C1

<https://www.findagrave.com/memorial/258825098>

Anthony "Tony" O'Malley

30 Mar 1918 – 2 May 2011

Plot: PN-B6

<https://www.findagrave.com/memorial/199122069>

Sarah Glenys "Glen" O'Malley

6 Aug 1922 – 17 Feb 2016

Plot: PN-B6

<https://www.findagrave.com/memorial/212491563>

John "Jack" O'Shea

1930 – 2012

Plot: PN-A2

<https://www.findagrave.com/memorial/257380280>

Teresa O'Shea

1958 – 2013

Plot: PN-C2

<https://www.findagrave.com/memorial/257380454>

Betty Morgan Oddy

1917 – 4 Dec 2006

Plot: PN-L8

<https://www.findagrave.com/memorial/257886794>

Gwyndaf Owens

27 May 1953 – 2 Oct 2011

Plot: PS-C14

<https://www.findagrave.com/memorial/245315386>

Margaret Yvonne "Non" Bailey Owens

2 Jan 1952 – 18 Jan 2001

Plot: PS-C14

<https://www.findagrave.com/memorial/245315600>

Mary Ann Evans Owens

1894 – 14 Aug 1963

Plot: PW-C10

<https://www.findagrave.com/memorial/249635774>

Thomas Henry "Twm Or North" Owens

1 Jan 1884 – 21 Jun 1955

Plot: PW-C10

<https://www.findagrave.com/memorial/249615736>

Irene Parry

1912 – 2006

Plot: PS-E2M

<https://www.findagrave.com/memorial/257246324>**David James Paynter**

30 Jun 1912 – 17 Sep 1964

Plot: PW-C6

<https://www.findagrave.com/memorial/257316270>**Ethel Paynter**

27 Sep 1927 – 22 Feb 1999

Plot: PW-C6

<https://www.findagrave.com/memorial/257316320>**Agnes Margaret Phillips**

unknown – 7 Aug 1921

Plot: PN-L3

<https://www.findagrave.com/memorial/257883087>**Annie Phillips**

Nov 1899 – 10 Jul 1900

Plot: PE2-C1

<https://www.findagrave.com/memorial/258184937>**Brinley Gwynfor Phillips**

1905 – 4 Aug 1951

Plot: PF-B2

<https://www.findagrave.com/memorial/258748350>**David Phillips**

Feb 1882 – 28 Apr 1882

Plot: PE2-C1

<https://www.findagrave.com/memorial/258185102>**Elizabeth Phillips**

1873 – 17 Jul 1933

Plot: PN-K3

<https://www.findagrave.com/memorial/257862789>**Elizabeth Phillips**

1883 – 9 Jul 1962

Plot: PC-K1

<https://www.findagrave.com/memorial/258530930>**Evelyn Phillips**

Dates unknown

Plot: PC-K1

<https://www.findagrave.com/memorial/258531122>

Iorwerth Phillips

1921 – 5 Feb 1983

Plot: PN-N9

<https://www.findagrave.com/memorial/257904985>**John Phillips**

1879 – 12 Jun 1958

Plot: PC-K1

<https://www.findagrave.com/memorial/258530746>**John Phillips**

1877 – 14 May 1965

Plot: PN-K3

<https://www.findagrave.com/memorial/257862763>**Joseph Wynford Phillips**

23 Jun 1929 – 6 Mar 1970

Plot: PN-E5

<https://www.findagrave.com/memorial/257592402>**Mair Elizabeth Phillips**

1911 – 8 May 1962

Plot: PN-N9

<https://www.findagrave.com/memorial/257904853>**Margaret Davies Phillips**

1859 – 11 Feb 1934

Plot: PE2-C1

<https://www.findagrave.com/memorial/258184744>**Margaret Phillips**

1901 – 29 Dec 1924

Plot: PF-B2

<https://www.findagrave.com/memorial/258748425>**Margaret Ann Phillips**

1916 – 23 Aug 1992

Plot: PC-K1

<https://www.findagrave.com/memorial/258531341>**Margaretta Phillips**

Dates unknown

Plot: PE2-C1

<https://www.findagrave.com/memorial/258184804>**Phillip Phillips**

1851 – 23 Jan 1934

Plot: PE2-C1

<https://www.findagrave.com/memorial/258184774>

Phillip John "Johnny" Phillips

1910 – 9 May 1995

Plot: PN-N9

<https://www.findagrave.com/memorial/257904927>**Ruth Maud Phillips**

unknown – 16 May 1969

Plot: PN-L3

<https://www.findagrave.com/memorial/257883042>**Thomas Phillips**

unknown – 17 Aug 1965

Plot: PN-L3

<https://www.findagrave.com/memorial/257882942>**Violet Phillips**

1946 – 25 Aug 1956

Plot: PL-B2

<https://www.findagrave.com/memorial/258748492>**Jane Ann Pointon**

25 Aug 1955 – 18 Apr 2024

<https://www.findagrave.com/memorial/281835124>**Cliff Pollard**

1912 – 16 May 1976

Plot: PW-A6

<https://www.findagrave.com/memorial/257305563>**Esther Margery Pollard**

1913 – 10 Aug 2005

Plot: PW-A6

<https://www.findagrave.com/memorial/257305583>**Kenneth Pollard**

1936 – 2006

Plot: PW-A6

<https://www.findagrave.com/memorial/257305606>**William Pollard**

28 Feb 1903 – 12 Feb 1975

Plot: PN-H10

<https://www.findagrave.com/memorial/257630961>**Eamond James Powell**

1930 – 28 Jul 2002

Plot: PS-D4

<https://www.findagrave.com/memorial/257245846>

Edward Stanley Powell

9 Oct 1923 – 27 Oct 2002

Plot: PN-C3

<https://www.findagrave.com/memorial/257500107>

**Florence "Millie" Powell**

1928 – 1983

Plot: PN-C3

<https://www.findagrave.com/memorial/257495200>

**Janet Mary Powell**

4 Jan 1966 – 13 Mar 2021

Plot: PS-E15M

<https://www.findagrave.com/memorial/257247802>

**David James Pritchard**

15 Mar 1927 – 27 Jun 1995

Plot: PS-B8

<https://www.findagrave.com/memorial/255937814>

**Joseph Pritchard**

6 Jan 1900 – 6 Jun 1964

Plot: PW-C7

<https://www.findagrave.com/memorial/188649905>

**Mavis Potter Pritchard**

1933 – 11 Apr 2011

Plot: PS=B8

<https://www.findagrave.com/memorial/255942724>

**Olwen Day Pritchard**

11 Nov 1908 – May 1992

Plot: PW-C7

<https://www.findagrave.com/memorial/188649664>

**ERNEST PROBERT**

1902 – 20 Apr 1934

Plot: PN-L7

<https://www.findagrave.com/memorial/257886217>

**Caroline Annette Proctor**

1953 – 1992

Plot: PA-B15

<https://www.findagrave.com/memorial/257214468>

**Frank Proctor**

1916 – 1993

Plot: PS-B12

<https://www.findagrave.com/memorial/257177594>



Leonard Frank Proctor

1947 – 2000

Plot: PS-B15

<https://www.findagrave.com/memorial/257214487>

Margaret Violet Frater Proctor

1921 – 2014

Plot: PS-B12

<https://www.findagrave.com/memorial/257177673>

Annie Mary Protheroe

1901 – 5 Jul 1964

Plot: PN-F9

<https://www.findagrave.com/memorial/257607012>

Evan Protheroe

Apr 1862 – 15 Apr 1933

Plot: PN-N7

<https://www.findagrave.com/memorial/255938265>

Gwilym Protheroe

1899 – 6 Oct 1975

Plot: PN-F9

<https://www.findagrave.com/memorial/257607063>

Margaret John Protheroe

1863 – 2 Jan 1934

Plot: PN-N7

<https://www.findagrave.com/memorial/255941525>

Doris Purdy

1924 – 1991

Plot: PE1-B2

<https://www.findagrave.com/memorial/258064351>

James Purdy

1921 – 1990

Plot: PE1-B2

<https://www.findagrave.com/memorial/258064298>

Raymond Pygh

Jun 1941 – 19 Nov 1942

Plot: PF-A1

<https://www.findagrave.com/memorial/258729013>

Agnes Morgan Rees

10 Oct 1893 – Apr 1971

Plot: PE2-E6

<https://www.findagrave.com/memorial/257058332>

Anne Rees

1853 – 5 Apr 1934

Plot: PC-G2

<https://www.findagrave.com/memorial/258424904>**Annie Rees**

1879 – 2 Oct 1966

Plot: PC-G1

<https://www.findagrave.com/memorial/258424426>**Cora Barbara Mary Rees**

1925 – 8 Nov 1991

Plot: PW-D12

<https://www.findagrave.com/memorial/257332407>**David Rees**

12 Aug 1842 – 30 Apr 1906

Plot: PC-G3

<https://www.findagrave.com/memorial/257060944>**David John Rees**

1923 – 11 Nov 1979

Plot: PN-N1

<https://www.findagrave.com/memorial/257901649>**Edward Russel Rees**

1912 – 20 Jun 1989

Plot: PN-N1

<https://www.findagrave.com/memorial/257901896>**Elizabeth Rees**

May – 25 Dec 1890

Plot: PC-G1

<https://www.findagrave.com/memorial/258424330>**Gertrude Valerie Thomas Rees**

1935 – 27 Jul 2004

Plot: PS-A3

<https://www.findagrave.com/memorial/257094186>**Gladys Rees**

1894 – 1968

Plot: PW-D9

<https://www.findagrave.com/memorial/257331950>**Ivor Glyndwr Rees**

1930 – 2009

Plot: PW-D9

<https://www.findagrave.com/memorial/257332007>

Ivor Thomas Rees

13 Mar 1903 – 4 Feb 1974

Plot: PC-I3

<https://www.findagrave.com/memorial/194424113>



Jack S Rees

1938 – 2010

Plot: PN-C6

<https://www.findagrave.com/memorial/257533590>



James Thomas Rees

1920 – 25 Aug 1997

Plot: PW-D12

<https://www.findagrave.com/memorial/257332444>



John Rees

1893 – 26 Feb 1956

Plot: PN-P2

<https://www.findagrave.com/memorial/232788327>



John Rees

1893 – 1964

Plot: PW-D9

<https://www.findagrave.com/memorial/257331990>



John James Rees

10 Nov 1891 – 8 Apr 1944

Plot: PE2-E6

<https://www.findagrave.com/memorial/257058302>



Ken Rees

1941 – 12 Mar 1990

Plot: PS-A3

<https://www.findagrave.com/memorial/257094114>



Llewellyn Maelog Rees

1892 – 21 May 1917

Plot: PC-G2

<https://www.findagrave.com/memorial/258424963>



Lynwen Rees

1945 – 1984

Plot: PN-C6

<https://www.findagrave.com/memorial/257529749>



Margaret Rees

1882 – 16 Apr 1967

Plot: PC-G1

<https://www.findagrave.com/memorial/258424483>



Margaret Rees

unknown – 17 Mar 1931

Plot: PC-G3

<https://www.findagrave.com/memorial/257061033>



Margaret Ann Rees

1887 – 10 Mar 1954

Plot: PN-N1

<https://www.findagrave.com/memorial/257901566>



Margaret Winifred Rees

1922 – 28 Jan 1997

Plot: PN-N1

<https://www.findagrave.com/memorial/257901945>



Mary Jane Rees

1906 – 1982

Plot: PC-I3

<https://www.findagrave.com/memorial/257061388>



Moira Evelyn Rees

1953 – 1953

Plot: PW-D12

<https://www.findagrave.com/memorial/257332469>



Pam M Rees

1930 – 2015

Plot: PW-D9

<https://www.findagrave.com/memorial/257332029>



Sandra Lorraine Rees

1964 – unknown

Plot: PW-D8

<https://www.findagrave.com/memorial/257332137>



Thomas Rees

1853 – 21 Sep 1921

Plot: PC-G2

<https://www.findagrave.com/memorial/258424830>



William Rees

1891 – 6 Oct 1971

Plot: PN-N1

<https://www.findagrave.com/memorial/257901602>



Wynford Rees

1924 – 1964

Plot: PW-D8

<https://www.findagrave.com/memorial/257332098>



Haydn Reynolds

1934 – 12 Jul 1960

Plot: PN-F6

<https://www.findagrave.com/memorial/257606225>**Muriel Violet Reynolds**

1915 – 6 Sep 1995

Plot: PN-F6

<https://www.findagrave.com/memorial/257606140>**Thomas Reynolds**

1911 – 18 Dec 1972

Plot: PN-F6

<https://www.findagrave.com/memorial/257606071>**Margaret Cynthia Thomas Rickwood**

11 Feb 1932 – 21 Jan 2000

Plot: PE1-C3

<https://www.findagrave.com/memorial/258088667>**Alice Kate Langdon Roche**

1900 – 1905

Plot: PE2-C5

<https://www.findagrave.com/memorial/258187456>**Edward John Roche**

1864 – 1904

Plot: PE2-C5

<https://www.findagrave.com/memorial/258187281>**Robert Roche**

1863 – 1936

Plot: PE2-C5

<https://www.findagrave.com/memorial/258187657>**Sarah Roche**

1874 – 1934

Plot: PE2-C5

<https://www.findagrave.com/memorial/258187602>**David Rodgers**

1907 – 25 Feb 1959

Plot: PN-F4

<https://www.findagrave.com/memorial/257605516>**John Rogers**

1899 – 4 Mar 1954

Plot: PN-H1

<https://www.findagrave.com/memorial/257621711>

John Philip Rogers

29 Mar 1941 – 4 Nov 2002

Plot: PN-H2

<https://www.findagrave.com/memorial/257621876>



Lizzie Daniels Rogers

1900 – 18 Dec 1991

Plot: PN-H1

<https://www.findagrave.com/memorial/257621744>



Sarah Ann Rogers

1894 – 9 Sep 1989

Plot: PN-F4

<https://www.findagrave.com/memorial/257605601>



Thomas haddon Rogers

1932 – 4 Jan 2004

Plot: PN-F4

<https://www.findagrave.com/memorial/257605674>



Catherine Rees Rosser

20 Apr 1874 – 7 Dec 1957

Plot: PC-E2

<https://www.findagrave.com/memorial/243102635>



Helen Susan Hurley Rosser

1961 – 2020

Plot: PS-E14M

<https://www.findagrave.com/memorial/256283803>



Ronald Charles Rosser

1927 – 1997

Plot: PS-B3

<https://www.findagrave.com/memorial/257151785>



William Henry Rosser

1887 – 2 Apr 1962

Plot: PC-E2

<https://www.findagrave.com/memorial/243102636>



Rowe

Dates unknown

<https://www.findagrave.com/memorial/257544411>



Alice Marguerite Rowlands

1891 – 11 Dec 1987

Plot: PN-L13

<https://www.findagrave.com/memorial/232789959>



John Rowlands

1885 – 4 Dec 1962

Plot: PN-L13

<https://www.findagrave.com/memorial/232789951>

Kenneth Goronwy Rowlands

1928 – 31 Aug 1983

Plot: PN-H12

<https://www.findagrave.com/memorial/257631466>

Annie Mildred Rumbelow

1928 – 21 Apr 1999

Plot: PN-G10

<https://www.findagrave.com/memorial/257621499>

Daniel Glyndwr Rumbelow

1921 – 7 Mar 1957

Plot: PN-G10

<https://www.findagrave.com/memorial/257621449>

Vincent Rumbelow

1928 – 21 Apr 1999

Plot: PN-G10

<https://www.findagrave.com/memorial/257621548>

Edward Arthur Rumsey

6 Jan 1924 – 26 Oct 1976

Plot: PW-C3

<https://www.findagrave.com/memorial/257315360>

Mary Rumsey

16 Mar 1923 – 11 Jan 2004

Plot: PW-C3

<https://www.findagrave.com/memorial/257315463>

Linda Mary Ryan

1954 – 2000

Plot: PE1-C4

<https://www.findagrave.com/memorial/258088823>

Ann Sadler

1875 – 12 Dec 1928

Plot: PE2-D3

<https://www.findagrave.com/memorial/258215309>

John Bevan Sadler

1867 – 6 Jun 1912

Plot: PE2-D3

<https://www.findagrave.com/memorial/258215237>

Pheobe Sadler

1907 – 1970

Plot: PE2-E3

<https://www.findagrave.com/memorial/258232001>



Thomas Sadler

1905 – 1966

Plot: PE2-E3

<https://www.findagrave.com/memorial/258231946>



Gwilym Samuels

1934 – 2001

Plot: PS-C18

<https://www.findagrave.com/memorial/257241421>



Caroline Thomas Slimm

4 Dec 1886 – Jun 1954

Plot: PN-M9

<https://www.findagrave.com/memorial/257898601>



Gwilym Slimm

1915 – 1923

Plot: PN-M9

<https://www.findagrave.com/memorial/257898624>



Olwen Slimm

1923 – 3 Sep 1976

Plot: PN-D2

<https://www.findagrave.com/memorial/257588815>



William Henry Slimm

15 Nov 1879 – Oct 1949

Plot: PN-M9

<https://www.findagrave.com/memorial/257898585>



William Vincent Slimm

1918 – 11 Aug 2006

Plot: PN-D2

<https://www.findagrave.com/memorial/257588843>



Wilfred Lawson Smith

1926 – 8 Jun 1975

Plot: PE1-B1

<https://www.findagrave.com/memorial/258064142>



Ann Stephens

1907 – 1963

Plot: PE2-E5

<https://www.findagrave.com/memorial/258232848>



Donald David Stephens

1930 – 14 Dec 1999

Plot: PS-C4

<https://www.findagrave.com/memorial/257214900>



Rev Joseph Gwynfor Stephens

24 Jan 1908 – Apr 1990

Plot: PE2-E5

<https://www.findagrave.com/memorial/258232500>



Rhiannon Lloyd Stephens

27 Apr 1929 – 6 Oct 2014

Plot: PS-C4

<https://www.findagrave.com/memorial/257214956>



Agnes Stephenson

1884 – 1 Feb 1970

Plot: PF-B7

<https://www.findagrave.com/memorial/258749466>



George Stephenson

1887 – 1934

Plot: PE2-B4

<https://www.findagrave.com/memorial/258117704>



Mary David Stephenson

1889 – Mar 1968

Plot: PE2-B4

<https://www.findagrave.com/memorial/258117768>



Dawn Stockwell

1958 – 9 Oct 2008

Plot: PS-D12

<https://www.findagrave.com/memorial/257241830>



Carol Ann Stuart

1952 – 2014

Plot: PS-E7M

<https://www.findagrave.com/memorial/257246846>



Jacqueline Ann Sturgeon

1937 – 2007

Plot: PS-A5

<https://www.findagrave.com/memorial/257094632>



Mark Sturgeon

1958 – 1992

Plot: PS-A5

<https://www.findagrave.com/memorial/257094558>



Lillian Winifred Swanton

1907 – 8 Oct 1940

Plot: PF-A8

<https://www.findagrave.com/memorial/258746747>**Margaret Elizabeth Swanton**

1872 – 14 Nov 1946

Plot: PF-A8

<https://www.findagrave.com/memorial/258746667>**Richard Henry Swanton**

1876 – 25 Nov 1943

Plot: PF-A8

<https://www.findagrave.com/memorial/258746591>**Antonietta Scarinzi Tartaglia**

13 Apr 1918 – 5 May 2003

Plot: PW-A5

<https://www.findagrave.com/memorial/257305513>**Pietro Tartaglia**

9 Aug 1912 – 25 Dec 1976

Plot: PW-A5

<https://www.findagrave.com/memorial/257305486>**David Lynn Taylor**

3 Sep 1944 – 1 Aug 2024

Plot: PS5 E19

<https://www.findagrave.com/memorial/281835141>**Alfred Thomas**

1859 – 13 Aug 1893

Plot: PC-D1

<https://www.findagrave.com/memorial/258277456>**Anita Thomas**

Dates unknown

Plot: PC-B8

<https://www.findagrave.com/memorial/259041635>**Arwel Thomas**

1978 – 2008

Plot: PS-E3M

<https://www.findagrave.com/memorial/257246458>**Benjamin Thomas**

1834 – 6 Feb 1898

Plot: PC-D3

<https://www.findagrave.com/memorial/258277618>

Dafydd Thomas

1830 – 13 Apr 1899

Plot: PC-D1

<https://www.findagrave.com/memorial/258277417>

David Thomas

1873 – 11 Oct 1879

Plot: PE2-A5

<https://www.findagrave.com/memorial/258104632>

David Haydn Thomas

unknown – 8 Aug 1961

Plot: PN-K3

<https://www.findagrave.com/memorial/257862841>

David John "Dai" Thomas

1921 – 1988

Plot: PN-M9

<https://www.findagrave.com/memorial/257898659>

David Vivian Thomas

1943 – 2022

Plot: PS-E16M

<https://www.findagrave.com/memorial/257247992>

Dewi Thomas

17 Nov 1927 – 5 Aug 2006

Plot: PN-K3

<https://www.findagrave.com/memorial/257862936>

Elizabeth Mandy Thomas

1967 – 17 Feb 2002

Plot: PS-D2

<https://www.findagrave.com/memorial/257246119>

Ernest George Thomas

15 Oct 1904 – 11 Oct 1951

Plot: PN-E4

<https://www.findagrave.com/memorial/257592303>

Gladys Thomas

19 Dec 1903 – 12 Oct 1969

Plot: PN-E4

<https://www.findagrave.com/memorial/257592268>

Margaret Thomas

1852 – 22 Feb 1897

Plot: PE2-A5

<https://www.findagrave.com/memorial/258104477>

Margaret Thomas

1835 – 13 Sep 1889

Plot: PC-D1

<https://www.findagrave.com/memorial/258277385>**Mary Thomas**

1895 – 22 Oct 1955

Plot: PC-B8

<https://www.findagrave.com/memorial/259041443>**Molly Thomas**

1922 – 1988

Plot: PN-M9

<https://www.findagrave.com/memorial/257898642>**Viola Thomas**

1924 – 12 Aug 2000

Plot: PE2-E9

<https://www.findagrave.com/memorial/258236994>**William Thomas**

1922 – 27 May 2004

Plot: PE2-E9

<https://www.findagrave.com/memorial/258237083>**James Thorne**

1867 – 1940

Plot: PN-L10

<https://www.findagrave.com/memorial/257887028>**Sarah Thorne**

1876 – 1932

Plot: PN-L10

<https://www.findagrave.com/memorial/257886964>**Jill Veale**

1940 – 2001

Plot: PC-C7

<https://www.findagrave.com/memorial/258277209>**Michael Stafford Vivian**

1944 – 2 Jul 1998

Plot: PS-C1

<https://www.findagrave.com/memorial/257214651>**Dilys Williams Walden**

1909 – 1988

Plot: PS-A3

<https://www.findagrave.com/memorial/257305349>

Doli Walters

9 Oct 1918 – 7 Mar 2004

Plot: PE2-D9

<https://www.findagrave.com/memorial/258229612>



Steven Warner

30 Oct 1967 – 22 Dec 2017

Plot: PS-E11M

<https://www.findagrave.com/memorial/257247420>



Margaret Ann Waters

1914 – 1 Oct 1974

Plot: PN-E8

<https://www.findagrave.com/memorial/257592818>



Alfred William Charles Wells

1914 – 1990

Plot: PS-A5

<https://www.findagrave.com/memorial/257094468>



Elizabeth Mary "Sheila" Wilds

1939 – 11 Jul 2004

Plot: PS-D8

<https://www.findagrave.com/memorial/257242130>



Esther Mary Wilds

Oct 1936 – 23 Jan 1937

Plot: PN-L12

<https://www.findagrave.com/memorial/257888041>



Iorwerth Clifford Wilds

1933 – 18 May 2015

Plot: PS-D8

<https://www.findagrave.com/memorial/257242162>



Lionel Albert Wilds

21 Aug 1908 – 18 Oct 1971

Plot: PN-L12

<https://www.findagrave.com/memorial/257888119>



Sally Bowen Wilds

18 Jun 1911 – 5 Dec 2004

Plot: PN-L12

<https://www.findagrave.com/memorial/257888189>



Thomas Henry Wilds

22 Jul 1910 – 14 Feb 1963

Plot: PN-J9

<https://www.findagrave.com/memorial/268943596>



Adelina Williams

1915 – 7 Feb 1946

Plot: PE2-A1

<https://www.findagrave.com/memorial/258103381>**Alex Maguire Williams**

Dates unknown

Plot: PN-J5

<https://www.findagrave.com/memorial/268925488>**Ann Bevan Williams**

1839 – 16 Aug 1919

Plot: PC-F2

<https://www.findagrave.com/memorial/257645556>**Ann Williams**

1823 – 8 Sep 1875

Plot: PE2-B2

<https://www.findagrave.com/memorial/258117155>**Annie Miriam Bevan Williams**

1881 – 19 Feb 1953

Plot: PN-K2

<https://www.findagrave.com/memorial/257862508>**Annie Muriel Williams**

1890 – 1968

Plot: PN-L11

<https://www.findagrave.com/memorial/257887436>**Audry Joy Williams**

1918 – 23 Jul 1977

Plot: PN-K2

<https://www.findagrave.com/memorial/257862623>**Ayron Williams**

1918 – 17 Aug 1987

Plot: PN2-A1

<https://www.findagrave.com/memorial/258103447>**Bernard Rhys Williams**

1922 – 1994

Plot: PS-B9

<https://www.findagrave.com/memorial/257169534>**Bessie Williams**

1882 – 1945

Plot: PN-J5

<https://www.findagrave.com/memorial/268925441>

Beti Williams

Dates unknown

Plot: PN-L11

<https://www.findagrave.com/memorial/257887511>



Catherine Williams

1832 – 21 Feb 1906

Plot: PC-C1

<https://www.findagrave.com/memorial/258267664>



Catherine Williams

1887 – 14 Jun 1971

Plot: PE2-E8

<https://www.findagrave.com/memorial/258236115>



Charlotte Williams

18 Aug 1919 – 10 Oct 2003

Plot: PS-D7

<https://www.findagrave.com/memorial/257245296>



Dafydd Williams

1856 – 24 Jan 1888

Plot: PC-F2

<https://www.findagrave.com/memorial/258423153>



David Williams

4 Jul 1876 – 2 Aug 1965

Plot: PE2-E4

<https://www.findagrave.com/memorial/248389117>



David Williams

1900 – 14 May 1976

<https://www.findagrave.com/memorial/249334712>



David Williams

1843 – 5 Feb 1905

Plot: PE2-B1

<https://www.findagrave.com/memorial/259422831>



David Williams

1885 – 1968

Plot: PN-L11

<https://www.findagrave.com/memorial/257887363>



David Williams

1853 – 16 Jan 1936

Plot: PN-O2

<https://www.findagrave.com/memorial/232789602>



David Williams

1879 – 17 Mar 1943

Plot: PF-B11

<https://www.findagrave.com/memorial/248050904>

David Ernest Williams

1899 – 23 Aug 1916

Plot: PE2-A6

<https://www.findagrave.com/memorial/258116605>

David John Williams

1900 – 20 Jul 1919

Plot: PF-B11

<https://www.findagrave.com/memorial/248050866>

Dorothy Mary Williams

1943 – 1982

Plot: PW-A1

<https://www.findagrave.com/memorial/257305291>

Dorothy May Williams

1905 – 3 Sep 1994

Plot: PN-M14

<https://www.findagrave.com/memorial/257901092>

Edward Williams

1860 – 17 Mar 1907

Plot: PE2-B1

<https://www.findagrave.com/memorial/259423051>

Edward John Williams

1906 – 25 Sep 1958

Plot: PN-F2

<https://www.findagrave.com/memorial/257604423>

Eirlys Williams

1910 – 22 Sep 1978

Plot: PN-F2

<https://www.findagrave.com/memorial/257604695>

Elizabeth Williams

1891 – 13 Feb 1943

Plot: PC-E3

<https://www.findagrave.com/memorial/257619370>

EMILY M Williams

9 Oct 1919 – 24 Jun 1993

Plot: PW-B11

<https://www.findagrave.com/memorial/257306748>

Emma Williams

1811 – 5 Jul 1886

Plot: PC-E1

<https://www.findagrave.com/memorial/258421276>**Gareth Wayne Williams**

1975 – 12 Nov 2018

Plot: PS-E10M

<https://www.findagrave.com/memorial/257247239>**Gerwyn Benjamin Williams**

1933 – 1978

Plot: PW-A1

<https://www.findagrave.com/memorial/257305273>**Griffith Williams**

Jan 1887 – 18 Nov 1887

Plot: PC-H1

<https://www.findagrave.com/memorial/194017299>**Gwyneth Margaret Augusta "Didi" Williams**

2 Aug 1912 – 2 Jul 2003

Plot: PF-B9

<https://www.findagrave.com/memorial/258751057>**Gwyneth Mary Eynon Williams**

7 Nov 1922 – 20 Jun 1960

Plot: PN-F5

<https://www.findagrave.com/memorial/257605858>**Haulwen Williams**

1927 – 3 Apr 1997

Plot: PS-B4

<https://www.findagrave.com/memorial/257152045>**Hector L Williams**

1910 – 1985

Plot: PC-C7

<https://www.findagrave.com/memorial/258277178>**Howard Aisne Williams**

1915 – 12 Sep 1989

Plot: PS-A7

<https://www.findagrave.com/memorial/257095006>**Hubert Lemuel Williams**

1924 – 26 Jul 2009

Plot: PE2-B8

<https://www.findagrave.com/memorial/258129957>

Hugh Williams

1 Aug 1858 – 15 Jan 1941

Plot: PC-F2

<https://www.findagrave.com/memorial/257645606>

**Ivor Williams**

1881 – 6 Jun 1932

Plot: PN-K2

<https://www.findagrave.com/memorial/257862210>

**John Williams**

1881 – 23 Nov 1953

Plot: PE2-E8

<https://www.findagrave.com/memorial/258236044>

**John Williams**

1853 – 24 Nov 1928

Plot: PC-E3

<https://www.findagrave.com/memorial/248831680>

**John Williams**

1840 – 1 Apr 1907

Plot: PC-H1

<https://www.findagrave.com/memorial/194018500>

**John Williams**

1871 – 23 Aug 1919

Plot: PC-C2

<https://www.findagrave.com/memorial/258268367>

**John Williams**

1815 – 12 Aug 1877

Plot: PC-E1

<https://www.findagrave.com/memorial/258421129>

**John Roland Williams**

Dates unknown

Plot: PC-D4

<https://www.findagrave.com/memorial/258277792>

**Katie Williams**

13 Jan 1916 – 5 Sep 1998

Plot: PS-D14

<https://www.findagrave.com/memorial/257241678>

**Leonard O Williams**

15 Apr 1916 – 10 Mar 1981

Plot: PN-C2

<https://www.findagrave.com/memorial/257476911>



Lettice Jones Williams

1880 – 2 Oct 1957

Plot: PF-B11

<https://www.findagrave.com/memorial/248050946>

Linda Elaine Williams

1952 – 1996

Plot: PW-D1

<https://www.findagrave.com/memorial/257331533>

Lizzie Williams

1864 – 20 Nov 1948

Plot: PC-B1

<https://www.findagrave.com/memorial/258252262>

Margaret Williams

1858 – 24 Mar 1934

Plot: PC-E3

<https://www.findagrave.com/memorial/257619335>

Margaret Williams

1879 – 3 Jun 1935

Plot: PE2-A6

<https://www.findagrave.com/memorial/258116392>

Margaret Williams

1852 – 28 Nov 1918

Plot: PC-B2

<https://www.findagrave.com/memorial/258257112>

Margaret Williams

1853 – 20 Feb 1932

Plot: PN-O2

<https://www.findagrave.com/memorial/232789583>

Margaret Ann King Williams

23 Feb 1881 – 13 Sep 1965

Plot: PE2-E4

<https://www.findagrave.com/memorial/248389262>

Margaret Ann Williams

1901 – 1950

Plot: PE2-A6

<https://www.findagrave.com/memorial/258116678>

Margaret Ann Williams

1876 – 12 Nov 1940

Plot: PC-J2

<https://www.findagrave.com/memorial/258529858>

Margaret Hannah Williams

23 Nov 1918 – 24 Jun 1998

Plot: PN-C2

<https://www.findagrave.com/memorial/257482527>**Margaret Ruth Williams**

1927 – 3 Jul 2006

Plot: PE2-B8

<https://www.findagrave.com/memorial/258129943>**Marion Williams**

1933 – 21 Aug 2015

Plot: PN-F2

<https://www.findagrave.com/memorial/257604782>**Martha Ellen Williams**

10 Sep 1886 – 11 Jun 1969

Plot: PN-O5

<https://www.findagrave.com/memorial/232789529>**Mary Williams**

1881 – 12 Mar 1937

<https://www.findagrave.com/memorial/255303641>**Mary Williams**

1828 – 17 Oct 1909

Plot: PE2-A5

<https://www.findagrave.com/memorial/258104719>**Mary Rees Williams**

13 Mar 1880 – 25 Mar 1953

Plot: PF-B9

<https://www.findagrave.com/memorial/258750634>**Mary John Williams**

1844 – 18 Nov 1907

Plot: PC-H1

<https://www.findagrave.com/memorial/194018232>**Mary Caroline Williams**

1914 – 20 Jan 1933

Plot: PN-O5

<https://www.findagrave.com/memorial/232789474>**Mary Jane Williams**

1899 – 13 Dec 1963

<https://www.findagrave.com/memorial/249353998>

Melva Reanon Williams

1926 – 8 Dec 1999

Plot: PN-G9

<https://www.findagrave.com/memorial/257621249>**Mervyn Williams**

Dec 1907 – 8 Aug 1908

Plot: PE2-A1

<https://www.findagrave.com/memorial/258103282>**Minnie Williams**

31 Mar 1907 – 20 Jul 1990

Plot: PS-D14

<https://www.findagrave.com/memorial/257241653>**Noreen Mary Williams**

unknown – 25 Dec 2004

Plot: PS-E1M

<https://www.findagrave.com/memorial/257246291>**Olwen Williams**

unknown – 9 Sep 1926

Plot: PN-O2

<https://www.findagrave.com/memorial/232789566>**Owen John Williams**

1887 – 27 Jul 1949

Plot: PN-G5

<https://www.findagrave.com/memorial/257618429>**Phyllis Florence Williams**

1919 – 1998

Plot: PS-A13

<https://www.findagrave.com/memorial/257142701>**Rachel Dilys Williams**

1910 – 1994

Plot: PC-C7

<https://www.findagrave.com/memorial/258277191>**Richard Williams**

1881 – 2 May 1940

Plot: PE2-A6

<https://www.findagrave.com/memorial/258116513>**Richard Williams**

1888 – 12 Dec 1946

Plot: PN-O5

<https://www.findagrave.com/memorial/232789502>

Ruth Williams

1920 – 30 Apr 1990

Plot: PS-A7

<https://www.findagrave.com/memorial/257095063>**Samuel Williams**

1845 – 25 Dec 1915

Plot: PC-B2

<https://www.findagrave.com/memorial/258257004>**Sarah Williams**

1870 – 13 Feb 1919

Plot: PC-C2

<https://www.findagrave.com/memorial/258268450>**Sarah Ann Williams**

1884 – 6 May 1942

Plot: PE2-A1

<https://www.findagrave.com/memorial/258103134>**Sydney John Williams**

Jan 1897 – 7 Mar 1898

Plot: PC-C2

<https://www.findagrave.com/memorial/258268509>**Tegwen Williams**

1911 – 21 Oct 1929

Plot: PE2-1

<https://www.findagrave.com/memorial/258103199>**Thomas Williams**

1872 – 25 Mar 1927

Plot: PC-H3

<https://www.findagrave.com/memorial/255303351>**Thomas Williams**

1 Nov 1877 – 26 Jun 1952

Plot: PF-B9

<https://www.findagrave.com/memorial/258750553>**Thomas Williams**

1815 – 15 Sep 1879

Plot: PE2-B2

<https://www.findagrave.com/memorial/258117319>**Thomas Williams**

1878 – 1938

Plot: PN-J5

<https://www.findagrave.com/memorial/268925420>

Thomas Williams

20 Sep 1905 – 23 Jul 1971

Plot: PW-B11

<https://www.findagrave.com/memorial/257306727>



Thomas Ambrose Williams

1912 – 1989

Plot: PS-A13

<https://www.findagrave.com/memorial/257142680>



Thomas Clifford Williams

1925 – 22 Nov 1954

Plot: PN-G9

<https://www.findagrave.com/memorial/257621209>



Thomas Francis Williams

1914 – 20 Apr 1919

Plot: PF-B9

<https://www.findagrave.com/memorial/258750748>



Thomas John Haydn Williams

1908 – 28 Oct 1961

Plot: PN-M14

<https://www.findagrave.com/memorial/257901044>



Walter Williams

1885 – 19 Mar 1958

Plot: PE2-A1

<https://www.findagrave.com/memorial/258103095>



William Williams

1827 – 24 Mar 1896

Plot: PC-F2

<https://www.findagrave.com/memorial/248831566>



William Williams

1859 – 15 Jan 1936

Plot: PC-J2

<https://www.findagrave.com/memorial/258529788>



William Archibald Williams

1923 – 30 Jun 2000

Plot: PS-B4

<https://www.findagrave.com/memorial/257152182>



Margaret Jane Wiltshire

1926 – 25 Oct 2003

Plot: PS-C9

<https://www.findagrave.com/memorial/257217219>



Richard David Thomas Wiltshire

1921 – 10 Aug 2000

Plot: PS-C9

<https://www.findagrave.com/memorial/257217171>



Freda Mary Young

1932 – 2017

Plot: PN-A3

<https://www.findagrave.com/memorial/257380634>



William Ivor Young

1931 – 2014

Plot: PN-A3

<https://www.findagrave.com/memorial/257380565>



Llandyry Church Cemetery

FindAGrave Ledger — Ongoing Updates

Compiled by Graham Tudor Emmanuel | Tudor59 · People's Collection Wales

This page records additions to the Llandyry Church Cemetery FindAGrave Ledger (804 memorials, compiled 7 April 2026) made after the ledger's original publication date. Each new entry is logged here as it is created, with the date of addition, plot reference, FindAGrave memorial number, and QR code.

Added: 1 May 2026

Mary P Gardner James

9 Apr 1929 – 10 Aug 2017

Plot: **PS-E9M**

<https://www.findagrave.com/memorial/299070628>

Memorial ID: 299070628



Vivit Post Funera Virtus — Virtue Lives On After Death



<https://tinyurl.com/Llandry-Survey-2023-Master>

