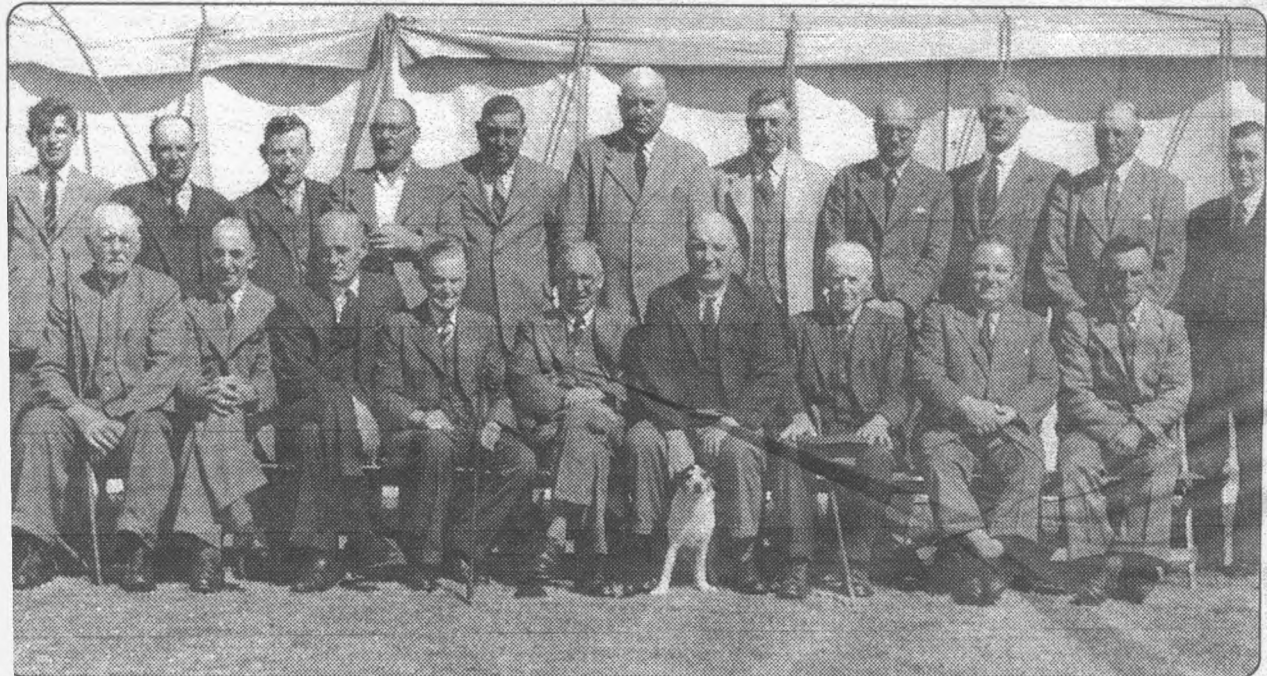


Vale of Glamorgan Agricultural Society - Committee 1st Show at Penllyn Castle Park 1953



Front row, left to right are David Davies (Eastdown Farm), Llewellyn Jenkins (Gregory Farm), J. Lloyd-Jones (Treasurer-Midland Bank), Fred Williams (Bear Hotel), David C. Watts (Auctioneer), Captain Homfray (Chairman-Penllyn Castle), Richard Morgan (The Farm), Herbert R. Thomas (Secretary-Auctioneer), Jack Thomas (Flemingston)

Back row, left to right are Robert Thomas (Auctioneer), Brynmor Morgan (Hensol), Thomas Adams (Penyrheol Farm), Ted Howells

(Picketston), Clifford Thomas (Llwynhelig), R. W. Davies (Ewenny), J. W. Thomas (Castleton), Colonel Maxwell (Southerndown), C. A. Martin (Colwinston), Percy Thomas

**HERBERT
HRT
THOMAS**

*We wish The Vale of Glamorgan
Show every success!*

**Chartered Surveyors &
Estate Agents**