

Cambrian Archaeological Association.

THE FORTY-THIRD ANNUAL MEETING

WAS HELD AT

COWBRIDGE

ON

MONDAY, AUGUST 13TH, 1888,

AND FOUR FOLLOWING DAYS.

PRESIDENT.

THE LORD BISHOP OF LLANDAFF.

VICE-PRESIDENTS.

The Marquess of Bute, K.T.	Lord Aberdare, G.C.B.
The Earl of Dunraven, K.P.	Archdeacon Bruce
Lord Windsor	Archdeacon Thomas
The Dean of Llandaff	J. W. Stradling-Carne, Esq., D.C.L.
Archdeacon Edmondes	Colonel Picton-Turbervill
A. J. Williams, Esq., M.P.	C. R. M. Talbot, Esq., M.P.
J. T. D. Llewelyn, Esq.	G. M. Traherne, Esq.

LOCAL COMMITTEE.

T. Rees, Esq., Mayor of Cowbridge	J. Coates Carter, Esq., Cardiff
Rev. D. Bowen, Cowbridge	Rev. W. David, St. Fagans
James A. Corbett, Esq., Cardiff	Rev. F. W. Edmondes, Bridgend
Rev. Canon Edmondes, Cowbridge	W. H. Evans, Esq., Llanmaes
Rev. Daniel Evans, Llanmaes	W. T. Gwyn, Esq., Cowbridge
T. Mansel Franklen, Esq., St. Hilary	Rev. H. J. Humphreys, Llangan
Rev. A. T. Hughes, Llancarfan	Rev. Joseph Jones, St. Lythans
Rev. John Jones, Ewenny	Rev. P. Wilson Jones, Marcross
O. H. Jones, Esq., Fonmon Castle	Rev. C. Ll. Llewellyn, Coychurch
Rev. E. Jenkins, Llanmihangel	Rev. Lewis Morgan, St. Hilary
Rev. W. Llewellyn, Cowbridge	G. W. Nicholl, Esq., The Ham
F. Mathews, Esq., Cowbridge	J. W. Phillips, Esq., Cowbridge
Daniel Owen, Esq., Ash Hall	G. E. Robinson, Esq., Cardiff
C. Collins Prichard, Esq., Pwllwyrach	Mr. T. Thomas, Bear Hotel, Cowbridge
J. Pyke Thompson, Esq., Cardiff	C. T. Vachell, Esq., M.D., Cardiff
Colonel Tyler, Llantrythid	Rev. M. Price Williams, Cowbridge
Rev. E. W. Vaughan, Llantwit Major	School
Rev. Canon Allen, Porthkerry	Rev. Rees Williams, St. Donats

Local Secretary.

Iltud B. Nicholl, Esq., F.S.A., The Ham, Cowbridge.

REPORT OF MEETING.

EVENING MEETING, MONDAY, AUGUST 13TH.

THE inaugural meeting, which was preceded, as usual, by a committee meeting for the transaction of private business, was held in the Town Hall, at 8.30 p.m. The members of the Association mustered in force, and there was a large attendance of the inhabitants of Cowbridge, who evinced a lively interest in the addresses and papers dealing with the history of their native town.

The retiring President, Charles Salisbury Mainwaring, Esq., being unavoidably prevented from attending personally to resign his office, the chair was taken by his successor, the Lord Bishop of St. David's. His Worship the Mayor of Cowbridge, Thomas Rees, Esq., then welcomed the members of the Association and their friends on behalf of the Corporation. The Lord Bishop of St. David's, after suitably acknowledging the Mayor's courtesy in a few well-chosen words, proceeded to deliver the Presidential Address:—

The Right Rev. the President first offered, in the name of the diocese of Llandaff, the Association a very hearty welcome, and expressed the earnest hope that the visit to a neighbourhood so full of objects of interest to the lover of archæology might amply repay the Association for having selected it as the field for their investigations during the present summer. With the varied archæological riches with which it was stored many of the members were probably far better acquainted than he. Not only were those stores of interest from an archæological point of view, they were also precious as historical landmarks and guides, without which the social, political, and ecclesiastical history of that part of the Principality in which they were would be nothing more than a fragmentary record stripped of well-nigh all which now rendered it interesting and trustworthy. Amongst the various remains of antiquity which were to be found within easy distance of their present place of meeting were some consisting of nothing more than a circle of rude colossal stones, untouched by the hammer or chisel of the workman. At other spots would be found

remains, more or less perfect, of the grand old abbey or the modest parish church, in which would be seen the varying styles of Christian architecture, which followed each other in quick succession, each with its own peculiar gracefulness and beauty. Referring to the most ancient or British period, perhaps, the right rev. gentleman remarked, the most interesting monument within the range of their researches was the vast cromlech at St. Nicholas. It was, he believed, one of the largest, if not the largest, of these remains to be found, not only in that particular neighbourhood, but in the whole kingdom. Other remains of the same period and of structures devoted to the same purpose, but of smaller dimensions, existed in the immediate neighbourhood, especially one at Maesyfaen, on the opposite side of Duffryn House, and equidistant from it, which would well repay a visit. But the remains of the British period were not confined to those of structures devoted to sepulchral and religious purposes. Encampments of greater or less extent, scattered at intervals over large portions of the Land of Morgan, served to remind them that their forefathers were not so wholly engrossed in peaceful pursuits as to neglect to guard themselves against the attacks of their enemies. Amongst the most extensive as well as the most ancient of these was that in the parish of Llangynwd, about five miles from Bridgend. From the British period they passed into that of the Roman occupation, which commenced about the middle of the first century of the Christian era, by the victory, after a long and brave resistance, of the Roman general over Caractacus, son of Bran the Blessed. Doubtless, at the moment the conquest of the Silures and the captivity of their brave leader were regarded as a terrible national disaster; but if tradition spoke truly, that Bran the Blessed and his brave son returned after their captivity converted to the Christian faith, that event, by God's good providence, had been productive of the richest blessing. Apart, however, from the interest which attached to the introduction of Christianity, regarded in its religious aspect, in some at least of its results it had peculiar interest for the archæologist, since there were few objects he investigated with greater pleasure than the remains of those ancient Christian temples raised by pious forefathers to the honour and for the worship of God. Of such of these ancient structures as existed in the immediate neighbourhood he would add a word or two presently, and would turn to notice briefly some of the remains which were more immediately connected with the advent of the Romans, and which were rendered necessary by the circumstances in which they were at that time placed. Of the *caerau* or encampments, remains of these were to be found in great abundance, and of those in the immediate neighbourhood that at *Caerau*, on a rising ground about two miles from Cardiff, was the most important and of the largest dimensions, occupying a space of about twelve acres. Amongst other relics of Roman occupation still to be seen in that neighbourhood were portions of the roads used by

the conquerors for the purpose of facilitating communication between their different camps. To these must be added a number of interesting tumuli, of which those near the village of Bonvilstone were specially worthy of note, and numerous Roman villas, scattered all over South Wales, without military outworks, supplying no unsatisfactory evidence of the submission of the natives to the mild and gentle rule of their new masters. The period which followed the departure of the Romans had left few objects of interest to the archæologist, since the work of the northern invaders was that of rapine and destruction, of a widely different character from that which followed, and which commenced with the invasion of Glamorgan by the Normans, under Fitzhamon, towards the close of the eleventh and down to the latter half of the fourteenth century. The rule of these new invaders, unlike that of the Romans, was severe, and provoked, on the part of the natives, a most obstinate and prolonged resistance. The results of this were still to be seen in the remains of the Norman and English castles with which South Wales abounded. The erection of these castles was not confined to the great Norman lords, for every country squire, if such a term were appropriate to those days, found it necessary to make his house a fortress. Concerning the two classes of castles, he (the speaker) would quote the words of a learned and accomplished author (Mr. Clark), whom he would have liked to have seen filling the presidential chair, who wrote "that the position of the English in Wales during the two centuries following the Conquest, in fact, until the reduction of the Principality by Edward I, was such as to make a castle a necessity. . . . Every landowner's house was literally his castle. In parts of Glamorganshire they stood so close that it is difficult to understand whence their owners derived their revenues. For example, within a radius of six miles from Barry, half the circle being occupied by the sea, were twelve castles, and in the county, and mainly in its southern part, were from thirty to forty, of which but one, Aberavon, belonged to a Welsh lord. Most of the castles were the residences of private persons, and were built for the defence of the estate and its tenants; others, the property of the chief lord, were constructed for the defence of the county, and were so placed as to command the passes by which the Welsh were accustomed to descend upon the plain. The sites of most of the Glamorgan castles are known, and of many of them the ruins remain." Last, but not least worthy of notice, were the parish churches, many of which were interesting, not only on account of their peculiar construction, the various styles of architecture exhibited, and the tombs, crosses, and other remains they contained or by which they were surrounded, but also from the fact that they had been erected in spots sacred from their association with most important events of a far earlier date than the existing structures, and not improbably hallowed as the spots on which the Gospel message was first proclaimed in the land by the earliest Christian missionaries. Amongst other spots for which that honour was

claimed were the churches of Llantwit Major, Llancarvan, and Llanilid, the two first named being memorable likewise for famous schools of theology, which were founded as early as the latter half of the fifth century. The church of St. Iltyd, or, as it was commonly called, of Llantwit Major, was of very peculiar construction, and various opinions had been expressed as to the purposes for which its three different portions were originally designed. He believed Professor Freeman, one of the greatest authorities upon these subjects, had expressed the opinion that the westernmost portion of the sacred fabric was the lady-chapel, and the easternmost a monastic church. But in a letter which appeared in the *Western Mail* a short time ago, the writer indignantly protested against this theory, and he (the speaker) would not have been ill pleased if the two antagonists had met before the Association and fought out their opinions. In conclusion, allusion was made to the discoveries at Cardiff Castle—one of monastic buildings, and a part of the outer wall which had surrounded the castle—which would both be found to be of great interest. The right rev. President then resumed his seat, amidst loud applause.

Archdeacon Thomas, in proposing a cordial vote of thanks to the President for his address, adverted to the reasons that had induced the Association to visit Cowbridge. Having already held meetings at most of the chief places in North and South Wales, it was deemed advisable in future to choose some of the smaller towns as the centres of operations, few of which offered so many attractions as Cowbridge, the surrounding district being more than usually interesting, on account of its connection with the first introduction of Christianity into Wales. The association of this part of Glamorganshire with early British Christianity was forcibly brought home to the minds of those present when they remembered that their President was the successor, and no unworthy one either, of Dubricius, the founder of the see of Llandaff.

Mr. R. W. Banks, the Treasurer of the Association, having seconded the vote of thanks, the President briefly replied, and then called upon Mr. Edward Laws, Secretary for South Wales, to read a paper by the Rev. J. P. Conway, the Superior of the Dominican Priory at Woodchester, upon the recent excavations made, by the orders of Lord Bute, on the site of the Black Friars Monastery, at Cardiff. This paper will be printed in the Journal.

The proceedings were brought to a close by the announcement of the programme of the next day's excursion.

EXCURSION, TUESDAY, AUGUST 14TH.

The members of the Association made the Bear Hotel their headquarters, where excellent accommodation was provided by our host, Mr. Thomas. All the excursions during the week were made by road, as facilities for travelling by rail are entirely wanting in

this district at present. It will not be out of place here to mention that the success of the meeting at Cowbridge was very largely due to the efficient manner in which Mr. Iltyd B. Nicholl discharged the somewhat arduous duties falling to the lot of the Local Secretaries on these occasions. The members have, therefore, to thank him for the punctuality with which the programme was carried out; and the horses should be grateful that the forethought displayed in adjusting the length of the journeys prevented their being overworked, as is unfortunately sometimes the case when the management is bad. The weather throughout the whole week was exceptionally fine, so that umbrellas were only used, as the derivation of the word indicates that they should be, as a protection from the excessive heat of the sun's rays.

The excursion started from the Bear Hotel at 9.30 A.M., members taking their seats in the horse-brakes with commendable punctuality. The first halting-place was the small village of St. Hilary, situated two miles south-west of Cowbridge, on high ground commanding an extensive view of the surrounding country. On a fine day the Bristol Channel, with the opposite coast of Somersetshire beyond, are plainly visible to the southward, and on the north the horizon is bounded by the bleak highlands of Glamorganshire. Cowbridge lies in a hollow below. Donovan, in his *South Wales*,¹ speaks enthusiastically of the prospect, which he says is "very far superior to any we had before surveyed in this part of the country". The summit of Stalling² Down hill, above St. Hilary, is crowned by a clump of trees that serves as a landmark for miles round. The old road from Cowbridge up to the top of Stalling Down is very steep, in consequence of which a new road has been formed, making a detour round the north side of the hill so as to obtain a better gradient. The old road is in a straight line with that on the other side of Cowbridge going to Bridgend, which is possibly Roman.

St. Hilary Church.—On arriving at the church the party were met by the Rev. Lewis Morgan, the Vicar, who delivered the following address:—

"The remarks which I propose to make are intended to facilitate rather than impede your progress, as you have so many subjects of interest in prospect to-day. This church was dedicated to Sanctus Hilarius, Bishop of Poitiers, whose name was also once associated in North Wales with Holyhead (or Caergybi), the fort of Cybi, who was surnamed Corineus, a son of Solomon, Duke of Cornwall, and pupil of Hilarius, about the year 380. In honour of his preceptor he called one of the headlands of this insulated spot St. Hilary, now St. Elian's Point. There is also a church dedicated, probably through this same family, to this saint in Cornwall.

"The ruthless hand of time had been arrested at different

¹ Vol. i, p. 307.

² A corruption of stallion.

periods, doubtless by well-intentioned, but most destructive repairs; consequently, this church was becoming sadly divested of its traditional associations, every vestige of which, however simple or homely it may be, has the strongest claims upon our reverence and care. These feelings, on being inducted to the living in the year 1855, urged me to appeal for funds to restore what was remaining to something like their primitive character. I soon received a most generous response from the Rev. J. M. Traherne of Coedriglan, whose interest in such matters was well known, and who then devoted his latest thoughts to the restoration of this venerable church, when his lamented death deferred the undertaking of his pious wishes; but subsequently his noble-hearted widow, to whom this parish owes a deep debt of gratitude, carried out the good intention of her lamented husband, and defrayed the whole cost. The restoration, which was completed in the year 1862, was carried out from the plans and under the superintendence of Sir Gilbert Scott, who, in this instance, as in all the restorations in which he was engaged, evinced a reverential regard for the preservation of all the ancient features of the building. This church, like most of the ancient sacred structures in our old country, was built at various periods of history, many proofs of which may now be seen. The chancel-arch and the font are of the Norman period, and for that reason have been carefully preserved, although it would not be difficult to replace them with handsomer ones of modern design. The rest of the chancel seems to be of the Early English period. The tower, nave, and aisle are of the Perpendicular style. The old monumental effigy, which was formerly within the chancel rails, is to the memory of an ancestor of the Basset family.

"All the old walls were retained, but securely underpinned and drained. The arcade between the aisle and the nave, which was formerly very much out of the perpendicular, was forced up into its place by means of the thumb-screw, and thus the necessity of its being taken down prevented. The east window of the aisle was removed, and carefully replaced. A new window has been placed in the west end of the aisle. This window replaces an old one which had been blocked up; when the plastering was removed, evident traces and some remains of the window were found, of the size and form of the window which now occupies the place, and probably of a similar design. The roof is of a very handsome substantial design, supported by a king-post in the centre; the timber-employed in this and in all the woodwork is pitch pine, and varnished without any paint or stain. The whole of the walls have been pointed outside, including the tower, and all the dressed stonework inside has had the whitewash removed from it by the application of muriatic acid, and pointed. The internal fittings are exceedingly elaborate and beautiful, and the carving was done by workmen who came from London for the purpose, and who had been employed for years in Westminster Abbey. During the restoration the remains of an old rood-loft were brought into sight, consisting of a doorway

and some steps of the stairs. These remains were reverentially preserved, although they form a rather unsightly object near the pulpit.

"The entrance-porch is entirely new, and designed by Sir Gilbert Scott; upon the whole, I feel we can quote a part of Mr. Pitt's appropriate lines on restorations:—

"But, O! work tenderly:
Beware lest one worn feature ye efface,
Seek not to add one touch of modern grace;
Handle with reverence each crumbling stone,
Respect the very lichens o'er it grown,
And bid each monument to stand
Supported e'en as with a filial hand.'"

The ground-plan of the church consists of a nave, with south aisle and porch, chancel and western tower. The original building, of the Norman period probably, had a nave and chancel only; the tower and south aisle appear to have been added when the Decorated style was prevalent; and the porch was erected by Sir Gilbert Scott in 1862. The chancel-arch is Transitional Norman, pointed, with square-stepped arch-mouldings and jambs, and simple abacus. It is 7 ft. 3 in. wide. The arcading between the nave and the south aisle has four arches. There is a flat-headed priest's door and window on the south side of the chancel. In the south wall of the aisle a flat-headed three-light window filled with Decorated tracery is worthy of notice. It is of the same type as a window in the Old Western Church at Llantwit Major; but the peculiar feature at St. Hilary is a horizontal band of quatrefoil ornaments running along the top. Over the south door is a Decorated bracket with the Basset arms. The tower is of two stories, of the usual local character, with lights in the upper part covered by a square label. The font, which is placed opposite the south door, near the north wall of the nave, is of Sutton stone, of plain round shape, having bulging sides, with a bold roll-moulding round the top. It is 2 ft. 3½ in. outside diameter, and 3 ft. 3 in. high, supported on a square step. Most of the fonts in this district are of Norman date, and made of a hard magnesian limestone dug from a quarry at Sutton, close to the mouth of the Ogmor river, on the coast of Glamorganshire, below Bridgend. It was thought of using Sutton stone in the construction of the Houses of Parliament at Westminster, but the supply was too limited. The stone is an excellent one, but hard, and sometimes liable to split. It was largely employed by the mediæval builders in Glamorganshire, at Caerphilly Castle, and many other places. There is a rude square stoup in the south wall of the nave near the south door, and a bracket in the north wall of the chancel. The steps up to the rood-loft, lighted by a square-headed window, are to be seen in the north wall of the nave at St. Hilary. The method of roofing over the rood-loft and other narrow staircases, other examples of

which occur at Llancarvan Church and Fonmon Castle, is rather curious. The roof is built of alternate courses, (1) of single stones placed like a lintel horizontally across the space to be spanned, and (2) of a pair of stones placed horizontally, but making an angle of 45 degrees with the sides of the passage, and meeting each other at a right angle.

There are two interesting sepulchral monuments in St. Hilary Church. The first is an altar-tomb, upon which is the recumbent effigy of Thomas Basset. He is in plate-armour, with the Basset arms, three hunting-horns, upon the body. His feet rest upon a lion. Round the end and one side runs an incised inscription in black letter: + Hic jacet Thomas | Basset qui obiit xliiii^{mo} die me'sis dec'bris a° d'ni m° iiii° xxiii° cu' a'ie pro(pici)etur deus amen. This monument was formerly within the chancel-rails, but is now placed under the most easterly arch of the arcading of the south aisle.

The second tomb is under an arched recess in the north wall of the nave, opposite the south door, and close to the font. The recumbent effigy is that of a layman, holding a glove in his right hand, and with his left resting on his breast.

The old socket-stone of the churchyard cross at St. Hilary is still in existence, resting on four steps, and a new cross has been erected on the old base. The socket-stone is octagonal at the top and square at the bottom, with stop-chamfers where one dies into the other.

The Rev. Lewis Morgan has kindly furnished the following information about the communion-plate and the inscriptions on the bells.

The chalice is of the usual Elizabethan pattern, with the date 1577 on the cover. The paten is dated 1818.

The inscriptions on the bells are, on the treble, "We were all cast at Gloster by A. Rudhal, 1734"; on the tenor, "Tho. Bassett and Lewis Thomas, churchwardens, 1734"; on the alto, "Prosperity to this parish A. (the representation of a bell) R., 1734"; on the bass, "Peace and good neighbourhood A. (a bell) R., 1734."

The earliest register is on paper, date 1690.

Old Beaupré House.—A walk of about a mile down the steep hill forming the east side of the valley of the Cowbridge river brought the pedestrians to Old Beaupré, the carriages being left to follow, in consequence of the badness of the road. On the right hand, after leaving St. Hilary, is a well-wooded hillside, called Coed y tor, which is honeycombed with old lead-workings in the limestone rock. The ruins of Old Beaupré House adjoin a modern farmhouse. The situation may have been originally chosen for defensive purposes, for, like St. Quentin's Castle, it is placed on an eminence round the foot of which runs the Cowbridge river, making a semicircular bend at this point. The principal objects of interest here are a remarkably fine entrance-gateway and a porch, both of carved stone in the style of the Renaissance, ornamented

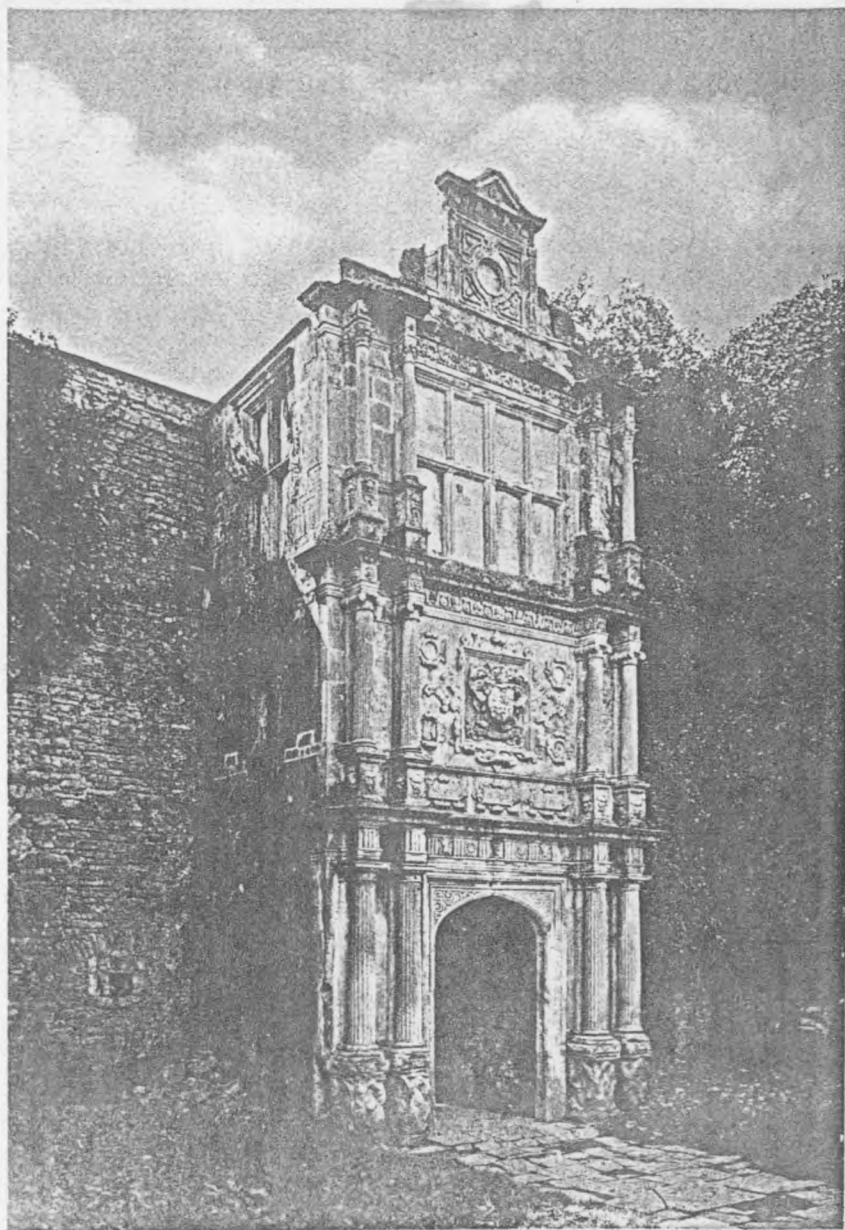
with coats of arms and inscriptions. The design of the entrance-gateway, through which access is obtained to the courtyard within, is not unlike that of the chimney-pieces and over-mantels of the same period. The doorway has a Tudor arch, showing that in spite of the introduction of classical architecture the Gothic traditions were not yet quite extinct; but all the other details show Italian influence. Above the centre of the doorway is a shield with the Basset arms and the family motto, misspelt, "Gwell angay na chwilydd", instead of "Gwell angau na chywilydd", meaning "Rather death than shame". This motto has been adopted by the 41st Regiment. Just below the horizontal cornice at the top is carved in the middle the date 1586, on the right the initials R. B., and on the left the initials R. B., C. B. The balusters beneath the top cornice are suggestive of Elizabethan woodwork, and appear rather inappropriate when executed in stone, as the treatment of any work of art should always be adapted to the requirements of the material used. Passing through the outer gateway the porch of the house is seen immediately opposite. The ground-plan of the porch is a square projecting from the front wall of the house. It is a far more imposing piece of work than the outer gateway, and reaches to the full height of the house. The architectural features consist of horizontal cornices supported by pairs of classical columns. Mr. W. H. Banks's photograph, here reproduced, gives a good idea of the general effect of the whole. The Basset arms occur again over the porch, but with the motto spelt differently, thus: "Gwell anghay na chwilydd." Above there are three tablets, with the following inscriptions in Roman capitals:

SAY COWDST THOU E
VER FYND OR EVER HEA
RE OR SEE WORLLDLY WRET
CHE OR COWARD PROVE

A FAITHFULL FRYNDE
TO BEE R[Y]CHARDE
BASSETT HAVING TO WYF
KATHERINE DAUGHTER TO

SIR THOMAS JOHN KNIGHT
BWYLT THIS PORCHE WITH
THE TONNES IN AN'0 1600
HIS YERES 65 HIS WIFE 55

Whilst the archaeologists pure and simple were discussing the possible meaning of the word "Tonnes", and wondering what a



The Phototype Co., 202, Strand, London.

PORCH.—OLD BEAUPRÈ.

modern reviewer would say if he caught an author spelling the same word in two or three different ways in the same paragraph, as was evidently a not uncommon practice in the year of grace 1600, the Rev. Lewis Morgan beguiled the time of the rest by relating a local tradition concerning the builder. It appears that two stonemasons who were in partnership fell desperately in love with the same fair maid. So deadly a feud was the result that the partners ceased to be on speaking terms, and this, coming to the ears of the damsel, she refused to have anything to do with either. One then left his home and went abroad, where, during twenty years' absence, he acquired a complete knowledge of Italian architecture. On his return he was engaged by the then head of the house of Basset to build the porch at Old Beaupré. Such traditions, whether true or not, have an interest for the student of the origin and growth of myths. A peasant picks up a flint arrow-head, and the secret of its manufacture being lost, he attributes it to the fairies. So with any more than usually fine piece of architecture, when its history has been forgotten, the common people begin by wondering how it ever came into existence, and from this it is but a short step to inventing such stories as those associated with the 'prentices' pillar at Roslyn Chapel in Scotland or the towers of Cologne Cathedral.

Two years ago the porch at Old Beaupré was in a very precarious condition, and would most certainly have fallen but for the well-timed efforts of the present representative of the Basset family for its preservation. It was repaired at considerable expense, but the work has been so thoroughly well done that there is every chance of this beautiful specimen of Renaissance architecture lasting for many centuries to come. The Cambrian Archæological Association should be especially grateful to Mr. Basset for the care he has taken to avert the decay of the ancient remains on his estate.

Amongst the farm-buildings at the back is one which has a cusped lancet window in the end of the gable of the Decorated period. Old Beaupré is said to have belonged originally to Sitsyllt, ancestor of the Cécils, and to have descended through Adam Turberville of Crickhowel to the Bassets. The estate was mortgaged to pay a debt to the Stradlings; sold to Edmunds; by him bequeathed to Llewellyn Treherne of St. Hilary; sold to Daniel Jones; and by him left by will to Capt. Basset, father of the present owner. Sir Philip Basset of St. Hilary, who first settled at Beaupré, was chancellor to Robert Fitzroy, Lord of Gloucester, and afterwards Lord Chief Justice of England. He is said to have drawn up the Magna Charta.¹

Just as the party were leaving the ruins, a gentleman was observed carrying away one of the seventeenth century iron door-hinges, which he naïvely remarked would be more appreciated in the Cardiff Museum than lying about at Old Beaupré. He was,

¹ *Glamorganshire Notes at Llanover*, iv, 12, 152.

however, persuaded to relinquish his booty on its being explained to him that, although this method of adding to a collection had the advantage of simplicity and the sanction of precedent, it was not a proceeding which the Cambrian Archæological Association could approve of as a body, whatever individual members might feel disposed to do when left to the guidance of their conscience.

St. Athan's Church.—The next place visited was St. Athan's, which lies about three miles south of Old Beaupré towards the coast. The church here is a fine cruciform structure, with a central tower and south porch. The nave has been restored in the worst possible taste, and new windows inserted, entirely devoid of architectural character; but the old oak roof has fortunately been spared. The chancel still retains three of the original lancet-windows in the south wall, and there was evidently a fourth next the east end. The priest's door, with a pointed head, also remains below these windows. The oak roof of the chancel is of the cradle-pattern, 16 ft. in span. The windows in the transepts have Decorated tracery. The arches under the tower are Pointed, without moulding of any kind. The two opening into the north and south transepts are old, but the other two opening into the nave and chancel have been restored.

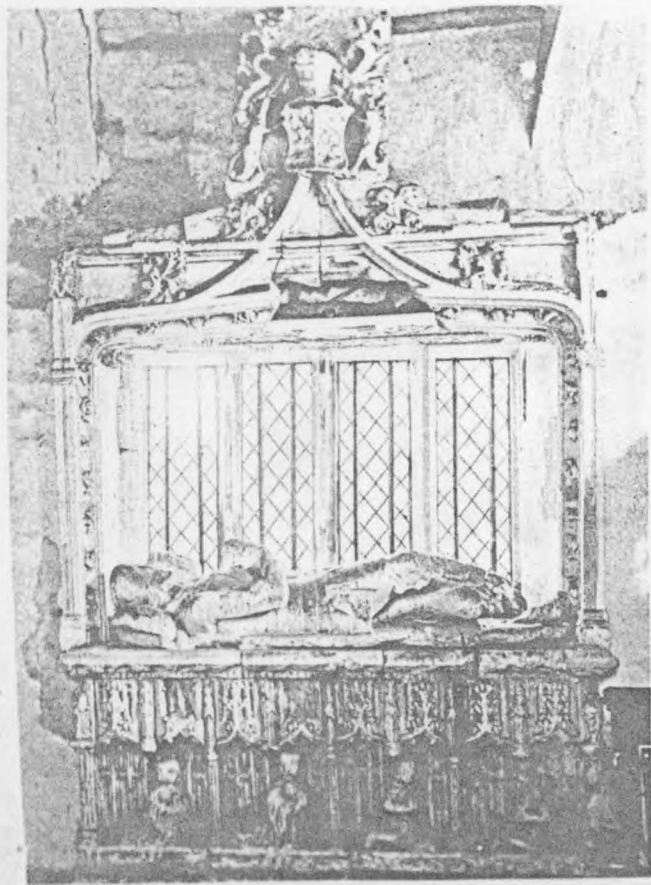
There is a hagioscope from the south transept to the chancel, and there appears to have been another from the nave to the south transept. In the south wall of the chancel is a credence-ledge under a wide niche. The font is round, shaped like a vase, contracted just below the rim and swelling out below. It is of Sutton stone, 2 ft. 5 in. diameter, and 3 ft. 1 in. high.

The tombs of the Berkerolles, of East Orchard Castle, attracted more attention than anything else at St. Athan's. The finest of the two monuments is placed against the south wall of the south transept, under a beautiful double canopy, supported in the middle by a bracket having a human head carved upon it. It is an altar-tomb with figures under cusped and floriated canopies all the way round the sides, and on the top are recumbent figures of a knight in plate-armour with dagger-belt, and his lady, both having their hands, in an attitude of prayer, resting on their breasts. The knight bears a shield over the left shoulder with the Berkerolles arms—a chevron and three crescents—as on one of the bosses of the oak roof of the Old Western Church at Llantwit Major.¹ The heads rest on pillows and the feet on lions. The whole of the work is of the Decorated period. The other altar-tomb is at right angles to the one just described, being placed against the east wall of the south transept.

East Orchard Castle is situated about a mile east of St. Athan's, on the top of the precipitous bank of the Cowbridge river; but time did not permit of its being inspected.

St. Athan's is called *Caer Athan* in the *Liber Landavensis*, where it is frequently mentioned. The communion-plate is modern.

¹ *Arch. Camb.*, Ser. III, vol. iv, p. 284.



ALTAR TOMB.—ST. BRIDES MAJOR.



The Phototype Co., 22, Strand, London.

CARVED DOOR.—GILSTON.

Gilston Church.—Driving a mile southwards from St. Athan's, the sea-coast was reached near West Aberthaw, where the Cowbridge river debouches into the Bristol Channel. The name of the little village of Aberthaw is well known throughout the whole of Great Britain, on account of the excellent lias limestone it supplies for the manufacture of hydraulic lime, used to make a cement which will set under water. Here the lovely view of blue sea, with the white sails of the shipping seen shimmering through the haze of a hot summer's day, would, under other circumstances, have received at least a passing glance; but luncheon was at hand, and the hungry archaeologists were not sorry to adjourn to the Ocean House, where an ample repast awaited them. After luncheon a short stroll brought the party to Gilston Church, a small but picturesque building, consisting of a nave, chancel, and south porch, having a small bell-turret perched on the top of the west gable. The south door is a handsome example of carved woodwork, six coats of arms forming the decoration, the spaces being cleverly filled in with conventional leaves. Mr. Banks was kind enough to bring his camera into requisition, so that we are enabled to illustrate this interesting door. The oldest window in the church is a small cusped lancet, in the south wall of the nave. The other features noticed were the rood-loft stair, in the north wall of the nave; a cusped niche for an image over the south door; the font, a plain cylindrical one, without mouldings or ornament, on a round stem; and the churchyard cross, with the socket-stone and part of the shaft remaining, supported on four steps.

On a marble tablet, surmounted by a crest and coat of arms in Gilston Church:—

"Here lyeth the body of Major William Giles, of this parish, the son of Matthew Giles, gent., who departed this life the 5th of June, in y^e year of our Lord 1673, who left behind him his daughter Winifred sole heiress of this manor, who was married to James Allen, gent. She died Feby. y^e 2nd, 1700. He departed this life y^e 6th March, 1711, and left two daughters by the said Winifred—Mary, who married Richard Carne of Eweny, Esq., the sole surviving heiress of this manor, at whose expense this monument was erected; Martha, married Charles Penry, of the town of Brecknock, Esq., who dy'd June the 12th, 1724, and lies interred at Brecknock."

Fonmon Castle.—The event of the day most highly appreciated was undoubtedly the visit to Fonmon Castle, the property of Oliver H. Jones, Esq., son of the late lamented R. Oliver Jones, Esq., one of our Vice-Presidents, and himself a member of the Association, in the welfare of which his father always took so lively an interest. Fonmon Castle is situated two miles east of St. Athan's, on the east of the valley of the river Kenson, a tributary of the Cowbridge river. It is on the west bank of a steep ravine, branching out of the Kenson valley, that runs up from just below St. Athan's, towards Penmark, where there is another mediæval stronghold. The

entrance of the Cowbridge river is commanded by East Orchard Castle, near the point where the two valleys meet. Fonmon Castle is described and illustrated by Mr. G. T. Clark in the *Archæologia Cambrensis* (Ser. III, vol. vii, p. 8), and in his *Medieval Military Architecture* (vol. ii, p. 49). The keep is a good specimen of an Early English rectangular one, and was built towards the end of the twelfth century by Sir John de St. John. Additions of a slightly later date completed the original Castle, to which a considerable addition was made about the time of the Commonwealth. When the St. Johns married the heiress of the Beauchamps, they ceased to live at Fonmon as their principal place, and in 1664 it was sold to Colonel Philip Jones, from whom it descended to the present owner.

When the party arrived at the gates of the Castle, Mr. Oliver H. Jones stood ready to receive his guests and conduct them over his venerable castellated mansion. Under his able guidance the visitors inspected, first the outside, to get a general idea of the situation, and then the various apartments within. Mr. Jones took great pains to show everything that was worth seeing to his guests, not the least interesting amongst which were the portraits of Cromwell, of Ireton, and of Mr. Robert Jones, painted by Sir Joshua Reynolds. After climbing the broad oak staircases of the newer portion of the house and the narrow stone ones of the older part, the leads of the roof were reached, whence a fine view is obtained of the surrounding country. A large number of documents of considerable historical value are preserved at Fonmon, a selection from which were displayed in the library on this occasion, in order to give the members an opportunity of inspecting them. Some of these documents have been already printed, but many others still remain to be published, and it is to be hoped that some of them may be reproduced in facsimile in the *Archæologia Cambrensis* at some future time. Mr. Jones having been requested to explain the chief points of interest connected with the collection of MSS., and to say a few words about the history of the Castle, then delivered an address, which was listened to with the utmost attention, and at its close Mr. Jones was cordially thanked by all those present for his kindness. The following list of some of the most interesting documents at Fonmon has been kindly supplied by Mr. Oliver Jones:—

1. Appointment of Colonel Philip Jones, described in the deed as "the Rt. Honble. Philip Lord Jones, Comptroller of his Highness Household, and one of his Highness most honourable Privy Council", to be one of the Governors of the Charter House, in the room of "Richard, Lord Protector of the Commonwealth of England, Scotland, and Ireland", who had resigned. It is dated 1658, and is sealed with the common seal of the governors of the Charter House, and also signed and sealed by "Nath. fiennes", "John Asher" (?), "B. Whitelocke", "Q. Lisle", "Prynne", "Wm. Lenthall", "fsh. Skippon", "Edw. Cessett" (?).

Colonel Jones was raised by Oliver Cromwell to his Upper

House, hence his description as *Lord*. I cannot make out for certain the names I have put a query to. This deed is very handsomely adorned round the margin with birds and flowers in pen-and-ink drawing, and the initial letters are very elaborate.

2. Pardon, dated 1662, granted by Charles II to Serjeant Evan Seys, of Boverton, Glamorganshire, for having acted as Attorney-General under the Commonwealth in South Wales. The deed is in Latin. In the initial letter is a good portrait of Charles II, "head and shoulders", with full black wig and ermine robes, with the collar of the Garter. Serjeant Seys was one of an old Glamorganshire family, long seated at Boverton, near Llantwit Major. The main line ended in an heiress who married into the Fonmon family. The seal of this deed is destroyed.

3. Feoffment, by Robert Nerber, of the manor of Lancovian, in the fee of Llanblethian, to Thomas Lyddyn and William ap Llewelyn, 31 Henry VI. The Nerbers were a powerful family who came early into Glamorganshire, and were seated at Castleton, near St. Tathan. Seal destroyed. No signature. Latin.

4. Indenture between William Cecil Lord Burghley and Edward Stradling, gent., concerning livery of manor of West Llantwit, Glamorgan. Signed, W. Burghley and Edw. Stradling; the last signature nearly illegible. Seals almost destroyed. 26 Elizabeth. This is, of course, the celebrated Lord Burghley.

5. Assignment, 21 Charles I, of a lease, dated 36 Henry VIII. The lease for a thousand years is granted by Sir Richard Williams *alias* Cromwell to Morgan John Walter of Llanytyd of premises called Keven y Sayson, in Cadoxton. This is interesting as showing that the Cromwell family also called themselves Williams in Henry VIII's time, thus showing the Welsh descent of Oliver Cromwell.

6. Grant of land, near Ewenny bridge, by "Paganus de Turber-vill", lord of Coity, about 1316. This deed is sealed with a seal in black wax, with a shield in the middle, and a legend round it. I cannot decipher the bearings or the legend. This man was one of the Turbervills, who were among the earliest Norman settlers in Glamorgan, and built Coity Castle, near Bridgend. The deed is in Latin, and interesting from its age.

7. Latin. Writ, dated 7th day of January, 20 Elizabeth, to summon a jury for trial of a cause at the Great Sessions for Glamorgan, and sewn on to this, on another strip of parchment, the names of the jurors returned, twenty-four in number, drawn from various parishes. I cannot make out where the Great Sessions were held; but the writing is very faint, and in places illegible.

8. 4 May 1651. Indenture lease of a tenement in Swansea. "Rt. Honble. Oliver Cromwell, Lord Lieutenant of Ireland", to Phillip Jones, Esq. Signed "O. Cromwell." No seal. English.

9. 22 Oct., 15 Elizabeth. Appointment, by William Bassett of Beaupré, of Roger Seys to be his steward of manors of St. Hillary, Tregove, Llantrythid, and Penon. Shows various manors held by

the Bassetts at that time, and also mentions another of the Seys family. English.

10. 17 August, 20 Edward IV, 1480. Feoffment, by John Herbert, otherwise Raglan, Esq., to Griffith ap Avon, and others, of his lands in the dominion of Llantwit. Latin. One branch of the Herberts called themselves Raglan, and were settled for a considerable period at Carnllwyd, near Llancarvan.

11. A statute staple, 29 June, 19 Charles I, sealed with three seals, red wax. Signed, Rich. Steephens. Other signatures illegible; endorsed, "a stat. staple by Richard Steevens to Robt. Bridges, 29 Junii (19 Car.), for 500" (?). Not sure as to the money. Steephens' seal much bigger than the others; something like a rose on it.

12. Henry VIII. Feoffment of manor of Eglwys Brewis, Glamorgan. Feoffor, William Bassett of Treguff. Seal dark red wax; very fine impression. Shield, a chevron between three hunting-horns, two above and one below. Legend round, "Sigillum Guillielmi bassit". One of the many branches of the Bassetts.

13. James I. Indenture between James I and James Shaw. Sealed with the great seal of England in red wax, and signed R. Salisbury. This was Richard Cecil, son of the great Lord Burghley, who was created Earl of Salisbury.

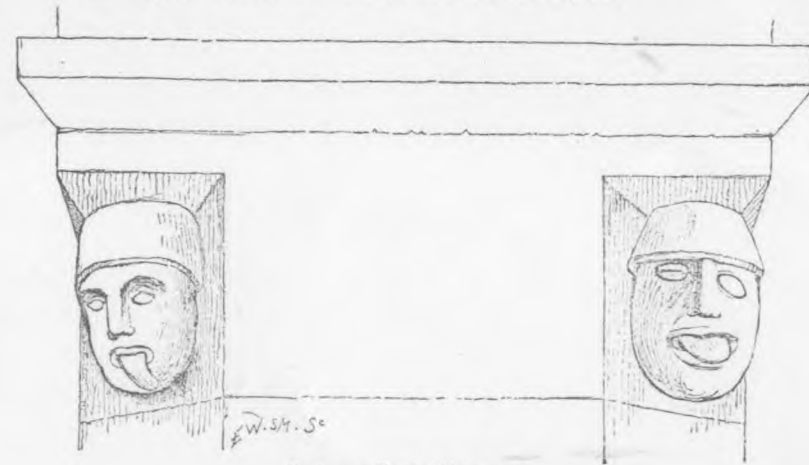
14. 11 Dec. 1657. Warrant under the Privy Seal of Oliver Lord Protector to pay the fee of Serjeant Seys, Attorney-General, of Glamorgan. Signed, Gervase Lawson, Dept. of Miles Fleetwood. Enrolled in the Exchequer. The seal is of red wax; the supporters a lion and griffin; the crest the royal lion on a crown; the shield quarterly, 1st and 4th, St. George's cross; 2nd, St. Andrew's cross; 3rd, Irish harp; with something on an escutcheon of pretence. Legend mutilated; word "Protector" visible.

The journey was then resumed, but Penmark had to be omitted from the programme for want of time.

Llancarvan Church.—It was tantalising to have to hurry through the visit to a place so celebrated in the literary history and hagiology of Wales as Llancarvan; but at the end of a long day a bare half-hour was all that could be spared, so we had to make the best of it, and scribble notes and sketch at lightning speed. Llancarvan is situated about a mile and a half north of Fonmon Castle. Most of us are already familiar with the events in the life of St. Cadoc, to whom the church is dedicated. If, however, there be any whom the fame of Cattwg the Wise has not yet reached, they must be referred to the "Vita S. Cadoci, in the *Lives of the Cambro-British Saints*, published by the Welsh MSS. Society. It is sufficient here to state that he lived in the sixth century, and that no less than sixteen churches in Wales preserve his name in their dedications. The site of the original monastery appears to have been, not at Llancarvan, but at Llanveithen or Bangor Cattwg, three-quarters of a mile higher up the valley. It is much to be regretted that time did not admit of this place being visited, and Ffynnon Dyfry (St. Dubricius' Well), not far beyond, as the whole locality teems

with associations of early Welsh saints. Caradoc, the author of the *Brut y Tywysogion*, or *Chronicle of the Princes*, the basis of the most authentic history of Wales, lived at Llancarvan in the twelfth century. The church and parish of Llancarvan have been very fully described in the *Archæologia Cambrensis* (vol. ii, Ser. 3, p. 261).

The plan consists of a nave, chancel, western tower, a south aisle the whole length of the church, and a south porch. The architectural features are more interesting than those in most of the other churches in the neighbourhood. The chancel-arch (Transitional Norman) is probably the earliest part, and perhaps the work of Walter de Mapes, in the reign of Henry II. The abacus is ornamented with incised four-pointed stars, like that at Penmark. The arcade of four Pointed arches between the nave and south aisle is peculiar. The piers are 2 ft. 6 in. square at the top and bottom; but the angles are chamfered with a stop at the bottom and a head at the top, making the pier octagonal in the middle. The carved heads are curious; one having a crown with three fleur-de-lys, and two others putting out their tongues in a most hideous fashion. The oak roofs are of the cradle-pattern, and there are some good Decorated windows in the south aisle.



Grotesque Heads, Llancarvan.

The ecclesiological or ritualistic arrangements consist of an octagonal font (Decorated); stoup inside south door; piscinas in chancel and south aisle; rood-loft stair in north wall of nave; rood-screen misplaced as a reredos behind the altar; and priest's door.

The roof of the tower is off, and the bells lying on the ground, it not being safe to hang them until this part of the church is repaired. The lock of the west door of the tower, with a wooden case, is deserving of notice. A fragment of Sutton stone with inter-

laced work, preserved at Llanancarvan, has been very incorrectly illustrated in Professor I. O. Westwood's *Lapidarium Walliæ* (pl. 101, figs. 2 and 3).

Llantrythid Church and Mansion.—The last place on the programme was Llantrythid, two miles north of Llanancarvan, and four miles and a half east of Cowbridge, which was taken on the return journey. The plan of the church, which has been already described in the *Archæologia Cambrensis*, consists of a nave, chancel, west tower, and south porch; a stoup like that at Llanancarvan; rood-loft stair; and rood-screen. The church possesses two remarkable monuments: (1) Under a niche in north wall of a recumbent effigy with hands folded in prayer; head tonsured, resting on square pillow beneath trefoil canopy; feet resting on greyhound; ball-flower ornament and fleur-de-lys. (2) An altar-tomb against north wall, with mural appendages and inscriptions, having two recumbent figures, representing Sir Anthony Mansel, who died in 1544, and his wife Elizabeth, who died in 1596, daughter of John Basset; the tomb was erected by Elizabeth Mansel in 1597. Mansel and Basset arms.

The chalice and paten are Elizabethan, dated 1576; chalice, silver-gilt, inscribed "My Bloude is dirinke indeed."

The Llantrythid estate was given by Fitzhamon to Madoc ap Jestyn, and belonged successively to the Bassets, Mansels, and Aubreys. Sir John Aubrey, the last baronet who lived at Llantrythid House, lost his son under distressing circumstances, in consequence of which he left the place. In 1832 the roof fell, and the place is now a ruin; but some views of the interior have been preserved amongst Mrs. Traherne's sketches, now in the possession of T. M. Franklen, Esq., of St. Hilary. A plan of the building is given in the *Archæologia Cambrensis* (vol. xiii, Ser. 3, p. 214), showing that it consisted of a rectangular block with two wings at each side.

This day's excursion terminated most pleasantly with a tea, to which the members were very kindly invited by Roper Tyler, Esq., the present owner of the modern mansion of Llantrythid.

EVENING MEETING, TUESDAY, AUGUST 14TH.

The evening meeting was held at the Town Hall, there being again a good attendance.

Archdeacon Thomas, in the absence of the President, occupied the chair, and opened the proceedings by giving a well thought-out *résumé* of the day's work, commenting amongst other things on the dilapidated state of the tower at Llanancarvan, and protesting against the thoughtless conduct of the gentleman who was about to carry away one of the sixteenth century iron hinges from Old Beaupré for the Cardiff Museum, without first obtaining permission from the owner to do so.

The following three papers were then read, and will be printed in the Journal:—

"The Norwich Taxation of the Diocese of Llandaff." By the Ven. Archdeacon Thomas, F.S.A.

"English Influence in Wales." By Edward Owen, Esq.

"The Manor of Llanblethian." By James Andrew Corbett, Esq.

Votes of thanks were passed to the authors of these papers, which were listened to throughout with marked attention. The meeting then terminated.

For several reasons the Local Committee were unable to form a Museum, as is usually done on the occasion of the annual meetings of the Cambrian Archæological Association; but this shortcoming was to a certain extent made good by the private efforts of Mr. David Jones, of Wallington, Surrey, who exhibited a very valuable series of drawings and maps in the ante-room of the Town Hall, illustrating the antiquities of Glamorganshire. Mr. Jones also produced at the meeting the skull of a horse clothed to represent the head of the animal when alive, which is called a "Mari Lwyd", and is carried about in procession. He has been good enough to furnish the following account of this curious, ancient custom:—

The Mari Lwyd: a Twelfth Night Custom.—The rapid decay and disappearance of old customs which the latter half of the nineteenth century has witnessed is a matter of such common observation that it has become the merest of truisms to speak of it. Many old observances which this century had inherited from a long line of predecessors have now ceased to be found even as "survivals"; if met with at all, I apprehend it would be only as "revivals", produced as something strange and rare for the amusement of the curious. Thus it has come to pass that the special local observances and rural pageantry which in Glamorganshire, on and about Twelfth Night, wound up the festivities of Christmastide, are no longer to be met with as part of the life of the people. "Canu Gwassaila" and the going about with a "Mari Lwyd"—customs common enough in the forties and fifties of the century—must now, I suspect, be classed with the things of the past. Both customs—for they certainly were each of distinct origin—were known by the one name of "Canu Gwassaila", or even more commonly, "Singing Gwassaila." But, while the "Gwassailwyr" proper needed not to trouble themselves with providing a "Mari Lwyd", those who went about with a "Mari Lwyd" were perforce obliged to "Sing Gwassaila". Singing was part of the performance, and tradition provided them with no other song. Of the two names, the first is self-explanatory: it is the "Singing of Wassail"; the second, in its application at least, is not very clear. The word "Lwyd" means "Blessed". How the name "Blessed Mary" has come to be applied to the skeleton of a horse's head, decked with ribbons and other finery, as will be presently described, is a question easier put than answered. An attempt, however, will be made to explain its appli-

cation; and the conclusions arrived at may or may not be acceptable. What follows on this subject will be taken chiefly from a contribution of my own to a Glamorganshire newspaper in 1878—one of a series of papers on local folk-lore—in which the Christmas and Twelfth Night customs of Glamorganshire were dealt with at length. To the theory I then advanced I still adhere, and I fancy it has since been adopted elsewhere.

By the kindness of a friend at Llangynwyd there was exhibited at the late meeting of the Association at Cowbridge a very fair representation of a "Mari Lwyd". It was not (as it turned out) a veritable "Mari" which had gone the round of the parish, but had, in the previous winter, been specially got up to aid in the illustration of a lecture on Glamorganshire Customs delivered at Maesteg, and some of the details it had not been thought necessary to reproduce for the occasion.¹ It was enough like in appearance to answer the purposes required.

The "Gwassailwyr" pure and simple were a body of rustics who enlivened the season, both for themselves and their neighbours, by going about from house to house singing the Wassail song. It was sufficient for the occasion if they blackened their faces, wore rough masks, or disguised themselves in any manner, and the rougher the disguise the better. One of them should be in woman's clothes, to play the part of "Bessy". Bessy carried a besom; the others had staves, with which, when the in-door fun began, they belaboured each other's sides and backs in a manner which would have been painful to behold if one had not known that each and all were pretty well protected by straw under their puffed-out garments. At the door of the house they wassailed they began with the following song, to a traditional tune, which I doubt not is still well known:—

I.
"O dyma ni'n dywed
Gym'docon dinuwad,
I ofun cewn genad, &c.
I. gauu.

II.
"Os na chewn ni genad
Ni drewn ar y nailldu, &c.
Nos heno.

"Ceir gwyla mynd heibo
Heb neb dod i'ch cofio ?

III.
"O tapwch y faril
Gyllynwch yn rhigill, &c.
Nos heno.

IV.
"A'r deishan frâs felus
A phob sort o spîsus
A gatwyd yn garcis, &c.
Y gwyla.

V.
Ond ni sydd yn cofio, &c.
Nos heno!"

These were verses of obligation: when these had been sung then, possibly, would come the tug of war. It was a recognised part of

¹ The "Mari" which was exhibited has since been presented to the Museum at Cardiff, and I understand that the energetic Curator of that institution has since obtained another from Lantwit Major, which had seen actual service in that parish.

the custom that if any one inside the house replied, those outside must answer, and so a musical dialogue would be kept up until one or the other of the two parties would be unable to respond in impromptu verse. When at last they obtained admission, it would be well if ample space had been cleared for them in the kitchen or other suitable apartment wherein they might display their antics. A good deal of "horse-play" would be indulged in, for the licence extended to the season by prescription would be availed of to the utmost. They should by right have with them a wassail-bowl, or that which is, I believe, its proper Glamorganshire substitute, namely, a *feol* made of Ewenny ware; but the "survival" of these articles within the time to which my own memory extends was a common bucket, or even, it might be, a tin can! Whichever vessel it may have been, it would be passed round, or at least you would be offered a mugful of drink out of it, while it was of course expected that the master of the house would do his part in keeping it pretty well replenished from the "barrel", which in song they had already asked should be "tapped" for them. Finally, the jingling of coins in a battered tin vessel, which did duty for a money-box, would be heard, and when this appeal had been responded to the Wassailers would take their departure, singing ere they went a valedictory stanza outside the house door. The words of this closing verse I do not remember.

For the "Mari Lwyd" much greater preparation was required. Indeed, it took the long evenings of several weeks beforehand to get everything necessary for the success of the pageant, and put all in apple-pie order. Why, the "Mari Lwyd" was the pride and admiration of the whole village! Everybody almost would have had a hand in the adorning of it and in decking out these "Gwassailwyr"—mothers, sisters, sweethearts—all! The lads who formed the party came dressed not only in their "Sunday best", but in great bravery of ribbons of many colours (cheerfully lent them by the women) superadded to coats and hats. If ribbons were not abundant enough, the want would be supplied by a sort of frilling of coloured paper. The "Mari Lwyd" itself, however, has not been described. The basis of the structure was, as has already been stated, the skeleton of a horse's head. This was padded on the outer side, where the flesh had been, and then covered into shape with white calico. The jaw was so fastened as to move up and down easily, and could be made to "bite" at the will of the man who played the part of "horse". Eyes were made out of the bottoms of broken beer-bottles carefully chipped round, while the ears would be of felt, leather, or any suitable material. The whole would be decked with "ribbons so plenty" that the "Mari" was indeed a sight to see! There was also some arrangement to give the appearance of a neck, and over this from the head there depended a long and large sheet or loose gown of calico, which served to conceal the young man who gave life to the "Mari". A smart "groom" had charge of the "animal", which he led by a

long rein of wide scarlet braid. The number of the party would be regulated by liking or convenience, but they were usually about six. They also sang at each door they went to about three verses of the Wassail song already given; upon the fourth they changed from Welsh to English, thus:

"We've got a fine Mary,
She's dressed very pretty
With ribbons so plenty
This Christmas."

This is how it would be managed in the bilingual district comprising the Vale of Glamorgan. In the northern parts of the county the singers continued in Welsh, thus:

"Mae Mari Lwyd yma
Mae'n werth i gael gola',
Yn llawn o rhubana,
Y Gwyla!"

After this intimation it was not usual to challenge them to a musical parley from the inside; they were generally admitted at once. They brought with them no "survival" of the wassail-bowl, such as we have seen the "Gwassailwyr" proper had, as an inseparable adjunct to their perambulations, and their proceedings indoors were of a more orderly character than what has been already described. Still there was a good deal of romping. If there were any young women about, they came in for the not very welcome attentions of "Mari", who ran after them, pretending to bite, and so forth. It was all meant in harmless fun, and the whole proceedings generally promoted a good deal of it. They would have beer given to them, and, possibly, a piece of cake each. They, too, had a money-box. On leaving, the strain sung by this party, at the door, was—

"God bless the ruler of this house,
And send him long to reign,
And many a merry Christmas
May he live to see again.
And God send you a happy new year."

There seems to have been, eighty or one hundred years ago, a sort of unwritten law that the "Mari Lwyd" of one parish should not intrude within the bounds of another. If this were done the intruding party did so at its peril; for if it were so met by a "Mari Lwyd" party of the parish intruded upon there would be a battle royal between them, and each would do its best to destroy the "Mari Lwyd" of the other.

It will, I think, be at once conceded that in this rustic pageant of the "Mari Lwyd", or the "Blessed Mary", we have had amongst us the survival of part of some ancient popular rite or ceremony. Is it not the last remnant of the once highly popular

"Festival of the Ass"? This festival was held on the 14th January, and commemorated the flight of the Holy Family into Egypt. An ass decked in rich robes or trappings was led to the high altar of the parish church, and a special service performed in its honour, the responses to which were an imitation of the hee-hawing of the animal itself. After this ceremony a girl and child, personating the Virgin and Child, mounted the ass and were taken round the parish. A wooden ass was sometimes used, and lay figures representing the Mother and Child placed thereon. In either case the perambulation of the parish seems to have been an essential part of the proceedings. What more likely, then, than that the "Blessed Mary", which so many generations of our Glamorganshire lads took so much pains to get up, deck so bravely, and carry from house to house with so much mirth and revelry—a horse's head with a man concealed under it—was a direct representative of the animal on which the "Mary" of olden time made a tour of the parish upon? Adopt this view, and the name "Mary" appears as a natural heritage which clung to the fragmentary part of the paraphernalia of the old festival which descended to our own time. As the "Festival of the Ass" was very commonly observed in pre-Reformation times, we might expect to find that traces of it remained to a late period in other parts of the kingdom besides Glamorganshire. I have discovered that it was not unknown in Monmouthshire; that, however, is very near our own borders. But there are evidences of somewhat similar "survivals" in places as remote as Lancashire on the one hand, and Kent on the other. In Lancashire they amused themselves on Twelfth Night by carrying round the semblance of a horse's head; while in Kent they still, I believe, "go a hodening" on this night, the "hoden" being a horse's head carved in wood, which is carried about to the accompaniment of carol singing and hand-bell ringing.

Objection may perhaps be taken to the solution here offered on the ground that the day of the celebration of the "Festival of the Ass" did not coincide with the "Festival of the Epiphany"; that the two observances were distinct, and were never likely to be commingled. Whether there is a lack of likelihood in this or not, I have, I think, shown pretty plainly that the Twelfth Night customs of Glamorganshire were of a twofold character, certainly of a twofold origin, and were partially, at least, commingled. We must remember that in pre-Reformation times the festivities of the Christmas season were kept up until Candlemas. After the Reformation the natural tendency of the times was to shorten them. Herrick, however, gives us to understand that in his time the Christmas decorations were kept up until the Feast of the Purification. The Puritans, as we know, did what they could to abolish Christmas revellings altogether. They were powerless to do this, from the hold which these had upon the minds and affections of the people. But they accomplished two things: (1) they shortened the duration of the period of licence and buffoonery; and, as a natural con-

sequence, they (2) displaced and threw into some confusion the several popular observances which had served to mark the prolonged course of the festival. The procession of the "Blessed Mary" was of too popular a character to be thrown aside altogether; rather, therefore, than lose it, the day of its celebration was thrown back by popular consent ten days in the calendar, and was held on (and after) the 6th of January, instead of the 16th, and was allowed to share the honours of Twelfth Night rejoicings with the "Gwas-saila".

Of wassailing itself much might be said, both as to the mode in which the custom was observed in Wales, and also under the wider view of its observance throughout the country. This, however, I will not touch upon. It will be sufficient to say that there are several Welsh wassailing songs in existence. Miss Jane Williams of Aberpergwn has preserved two for us in the collection of *Ancient National Airs of Gwent and Morganwg*, published at Landoverly in 1843, namely, "Y Washael", at p. 30, and "Hyd yma Bu'n cerdded", at p. 31. Hone, too, in his *Ancient Mysteries Explained*, gives the translation of a very curious one by "Thomas Evans", which is well worth study for the allusions it contains, and which I elsewhere have attempted to analyse. These are in print, and accessible to all. The inquirer who wishes to pursue the subject further will, if he is industrious, find several more in manuscript.

I ought, perhaps, to add that since the meeting at Cowbridge I have been shown a Welsh essay upon the "Mari Lwyd", but was not able to do more than glance at it. I regret to say that I did not note, and do not remember, the author's name. It would seem to have been published about 1882. The wassailing song contained several more verses than I have given; but the greater part were quite new to me, and I venture to think would not be generally known in Glamorganshire.

EXCURSION, WEDNESDAY, AUGUST 15TH.

Leaving the Bear Hotel at 9.30 A.M., the carriages started on the Bridgend road up the steep hill on the west side of Cowbridge. When the top was reached, the straightness of the road became very apparent, looking both backwards towards the clump of trees on Stalling Down, and forwards in the direction of Ewenny. There seems to be little doubt that this is the line of the old Roman military road to Bovium, the site of which has been conjectured to be at Ewenny. The fact of the existence of a place called Broth Street, near Ewenny, points to a Roman road of some kind having passed by it. Halfway between Cowbridge and Ewenny the road passes over what was formerly a bleak moor, but which is now enclosed and cultivated. This portion of the road is

called by the somewhat poetical name of the Golden Mile,¹ and it was not far from here that a large number of ancient British urns were dug up in the Twmpath barrow on Pwll-y-rack farm, a full description of the discoveries, by Mr. F. G. Hilton Price, having been recently published in the *Archæologia Cambrensis* (vol. v, Ser. 5, p. 83). Passing by Ewenny, to return there later, the first halting-place was St. Bride's, eight miles distant from Cowbridge. The last mile of the road passed through a deep ravine, with mountain limestone cliffs peeping out here and there from between a covering of greensward varied with patches of bracken fern. The scenery in this secluded valley is entirely different from the views in other parts of Glamorganshire, where the geological formation is lias, and is far more like the wild landscapes of Cumberland or Derbyshire. St. Bride's Church is picturesquely situated at the upper end of the valley, perched on the hill-side.

St. Bride's Church.—The church here is dedicated to St. Bride or Bridget, and is called St. Bride's Major. St. Bride's Minor is situated nearly as far north of Bridgend as St. Bride's Major is south of the same place. It was visited by the Cambrian Archæological Association during the Bridgend Meeting in 1869. The building, although not a large one, is full of points of interest.

The plan consists of a nave, chancel, west tower, north porch, and a small vestry on the north side of the chancel. The chancel-arch is a remarkable one. It is round and of Norman date, with a simply-moulded abacus. Most of the rest of the architectural features are Decorated. The tower has the usual local characteristics.

On each side of the chancel-arch are two large squints cut through the wall at a late period, and on the north side is, in addition, a third squint of much smaller dimensions than the others. The font has an octagonal bowl on an octagonal stem.² The most noteworthy amongst the sepulchral monuments are the inscribed coffin-lid of Johan le Botiler, and an altar-tomb belonging to the same family. The coffin-lid is at present in the floor of the chancel, but is partially concealed from view by some rickety boarding placed upon the top of it, which should be removed. The stone coffin belonging to it is still in the churchyard, on the south side of the tower, and might well be taken inside the building and the lid restored to it. The top of the lid is flat, with the figure of a Crusader in chain-armour incised upon it, and the sides bevelled, bearing the following inscription in Lombardic capital letters of the thirteenth century:—

IOHAN : LE : BOTILER : GIT : ICI : DEU : DE :
SA : ALME : EIT : MERCI : AMEN.

¹ Several stories are given to account for the name, the most probable being that it was suggested by the golden yellow flowers of the gorse.

² By some mistake the font at St. Bride's is described in the Report of the Bridgend Meeting in the *Arch. Camb.*, 3rd Ser., vol. xv, p. 434, as being Norman, and similar to the one at Llantwit.

The knight holds a drawn sword in his right hand, and has a shield over the left shoulder with the three covered cups of Boteler. On his head is a skull-cap of plate-armour with a fleur-de-lys in the centre and a covered cup on each side. This incised effigy is in very perfect preservation, and is a valuable example of the military costume of the thirteenth century. It has been engraved in Dr. E. L. Cutts' *Sepulchral Slabs* (pl. xxxii*), and in the *Journal of the British Archaeological Institute*. The altar-tomb is placed in a recess in the wall with a window behind it. Over the top of the recess there is a canopy, in a somewhat dilapidated condition, and the arms of the Butlers. On the tomb rest the recumbent effigies of a knight in plate-armour, and his lady beside him. (See Plate from photograph by Mr. Banks.)

On a monument, underneath a semi-classical canopy, are two half-length painted figures facing each other, the husband in his wig and gown, and the wife in the dress of the period. The inscription is as follows:—

“In memory of John Wyndham, Esq.,

Sergt. at Law,	and	Jane his wife
was of the antient		was the daughter
family of the		of William Strode
Wyndhams, and		of Barrington in
heir of Humphrey		the county of
Wyndham, Esq., and		Somerset, Esq. She
Jone, the daughter of		departed this life
Sir John Carne of		1 Dec., in 64th year
Ewenny. He departed		of her age, and
this life, 4 Oct., in the		in 1698.”
67 year of his age, in		
the year 1697.		

The churchyard cross is of the same type as the others in Glamorganshire. The socket-stone rests on five steps, and the cross is perfect, with the exception of the head, which is gone. The base of another cross lies about 500 yards to the north-west of the church.

St. Bride's Major was associated in more recent times with General Picton, of Waterloo fame.

The party, after having inspected St. Bride's Church, retraced their way through the same rocky limestone gorge they had already traversed coming, back to Ewenny Priory, which lies a little over a mile south of Bridgend, on the bank of a small river that joins the Ogmere lower down.

Ewenny Priory.—The last visit made to Ewenny by the Association was during the Bridgend Meeting, when the architectural peculiarities of the church were explained by Mr. E. A. Freeman. Upon the present occasion Colonel Picton Turbervill, the lay successor of the ancient Priors, received the members and conducted them round the building. In order that the party might not be wholly unprepared for what they were going to see, Colonel Tur-

bervill had with great kindness and forethought ordered Mr. E. A. Freeman's paper on the Churches of Coychurch, Coyty, and Ewenny, and Mr. G. T. Clark's paper on Coyty Castle, to be reprinted from the *Archæologia Cambrensis* in pamphlet form for distribution amongst the members, to whom it proved of much service. The idea of reprinting papers on the objects of interest visited during the annual meetings is so good a one that, now Colonel Turbervill has inaugurated the practice, it may with advantage be continued in years to come. The alterations and discoveries made at Ewenny since Mr. Freeman's account was written in 1857 have been summarised in a paper by Colonel Turbervill contributed to the *Transactions of the Cardiff Naturalists' Field Club* (vol. viii, 1876, p. 41), as follows: 1. Arched doorways into chapels from south and north aisles of presbytery; 2. East window of presbytery opened; 3. Hagioscope in north wall of presbytery discovered and opened; 4. Double piscina found in north wall; 5. Foundations of chapels on north side of presbytery laid bare. It would be desirable to have a new plan prepared showing these more recent discoveries.

The church at Ewenny belongs to the same class as those at Brecon, Monkton, Ruthin, and elsewhere, which are both parochial and monastic, the parish church and the church of the monastery being combined in one and the same building. The strongly-marked military peculiarities of the architecture indicate that it was intended also to serve the double purpose of a place of worship and a fortified castle in case of sudden attack. Portions of the church have been destroyed, but what remains has undergone hardly any modification since it was erected in the twelfth century. Consequently, we have at Ewenny the most perfect specimen of an early Norman semi-ecclesiastical semi-defensive structure to be found throughout the Principality. A building of some kind seems to have been erected at Ewenny by William de Londres, one of the followers of Fitzhamon; and the present Benedictine Priory was founded in A.D. 1141 by his grandson, Morice de Londres, by whom it was added as a cell to the Abbey of St. Peter, at Gloucester. At the dissolution of the monasteries, the property passed out of the possession of the Church into that of the Carne family, and subsequently into that of Turbervill, by marriage. Ewenny Priory is dedicated to St. Michael. Hardly anything remains of the conventual buildings except the gateway, all the rest having apparently been pulled down to obtain materials for the adjoining mansion, at the beginning of the present century. E. Donovan, in his *South Wales* (1805), describes the state of the church as being very disgraceful when he saw it; but now Colonel Turbervill has fully atoned for the neglect of his ancestors in the past by the great care which he has bestowed for many years upon repairing and beautifying the building. The ground plan was originally cruciform, with a central tower of hugely massive proportions. At present it consists of the nave, used as the parish church, with a porch on the north side, and the choir, south tran-

sept, and presbytery of the old monastic church. The north aisle of the nave, the north transept, and chapels on the north and south side of the presbytery have been destroyed. The parochial and monastic churches are separated by a wall blocking up the whole of the western arch under the central tower. This masonry screen formed the reredos of the altar of the parish church, and has a doorway on each side, by which access is obtained to the choir. The division of the church into two parts did not take place at the dissolution, but was the arrangement from the beginning.

The style of most of the architectural details is early Norman. The massive round piers and arches on the north side of the nave still exist, and are not unlike those at St. John's Church, Chester. The arches under the lantern of the tower are round, with two orders of moulding perfectly plain and square. The roof of the presbytery is a very bold piece of stone vaulting, and of much greater span than is usual in Romanesque buildings. It is divided into three bays, the easternmost being covered with groined vaulting, to allow of the insertion of windows in the north and south walls, and the other two bays against which the chapels abut having barrel-vaulting.

With regard to the gloomy appearance produced by the small number of windows, Mr. Freeman remarks, "All is dark, solemn, almost cavernous; it is, indeed, a shrine for men who doubtless performed their most solemn rites with fear and trembling, amid constant expectation of hostile inroads." The south transept has a timber roof of poor design, but this is to a certain extent atoned for by the variety produced in the wall-surface by the arcading, resembling that of the triforium of a cathedral, which lights the passage leading up to the tower. The excellent photograph taken by Mr. Banks shows the gable of the south transept with the military tower rising above it. The triple stepping of the battlements of the tower deserves notice as being a rare feature in Wales, although common enough in Ireland and East Anglia. There are two fine round-headed Norman doorways at Ewenny. Amongst the ecclesiastical features are a fourteenth century oak rood-screen separating the presbytery from the choir, a hagioscope, and a double piscina. The font at the west end of the parish church is bowl-shaped, with mouldings at the top, bottom, and round the middle. It is of Sutton stone, and probably of Norman date, but its appearance has been entirely changed by being placed on a modern stem instead of resting on a step, as it probably did originally.

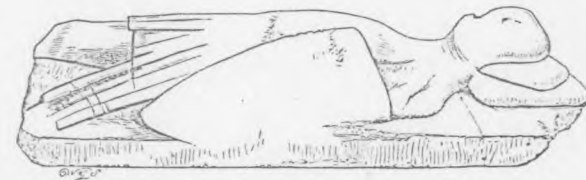
There are several interesting thirteenth century sepulchral slabs at Ewenny, the best of all being the tomb of Morice de Londres, a splendidly carved slab with a floriated cross on the top, inscribed on each side in Lombardic capitals: *ICI GIST MORICE DE LONDRES FONDEUR : DIEU LUI REND SON LABEUR : AMEN.* A beautiful border of Early English foliage, of the same kind as that on the Tree of Jesse at Llantwit Major, runs the whole way round the bevelled

edge. The slab has been inaccurately engraved, both in Sir R. Colt Hoare's *Itinerary of Baldwin*, and Dr. E. L. Cutts' *Sepulchral Slabs*, the foliage being most carelessly drawn. An illustration is now given, taken from a rubbing photographed on to the wood-block by Mr. Worthington-G. Smith.

Outside the church is a cross slab inscribed—

+ HIC IACET . . . DE LON(DRES).

This might with advantage be placed under cover within the presbytery. There is also the recumbent effigy of a knight, which has been conjectured by some to be the monument of Sir Paganus Turbervill, and by others to be that of Sir Roger de Remi.



Ewenny Effigy. Half-inch Scale.

Having thanked Colonel Turbervill for the courtesy shown to the Association, the party left for Coity, which is a mile and a half north-east of Bridgend, and about three miles from Ewenny. Here luncheon was provided in the school-room, and, when the wants of the inner man had been attended to, an adjournment was made to the church and Castle.

Coity Church and Castle.—The architecture of Coity Church has been done full justice to in Mr. E. A. Freeman's paper in the *Archæologia Cambrensis* (vol. iii, Ser. 3, p. 101), and the ritual arrangements are described in the *Ecclesiologist* (vol. viii, p. 251). Both the church and Castle were visited during the Bridgend Meeting. At Ewenny we had an instance of an almost unaltered cruciform church of the Norman period; at Coity we see a structure designed on the same lines by an architect of the fourteenth century. Dr. Freeman says: "On the whole this church is an excellent one, and in fair preservation; but few of the windows have been robbed of their tracery, nor has any special devastation of any other kind been perpetrated. It has but little ornamental detail, but its picturesque outline and its fine series of windows would attract notice anywhere; and as a thoroughly Welsh church, exhibiting the local half-military type on a larger scale and wrought with more finished workmanship, it ranks especially high. It is, however, decidedly outshone by its neighbour (Coychurch), which I have next to describe."

Before entering the sacred edifice we pass a fine old yew-tree, casting its deep shadows athwart the path, and, glancing up at the

tower, the extraordinarily quaint gargoyles are seen standing out against the blue sky, long-jawed beasts, armed with rows of teeth like those of a crocodile. Inside the church is preserved a curious oak-chest, apparently constructed out of old materials intended for some other purpose. Mr. Banks' photograph shows its form and the style of the carved decoration, which consists of flamboyant tracery, together with four panels, enclosing the following emblems of the Passion: 1. Cross with crown of thorns; ladder and spear; three boxes of ointment carried by "les trois Myrrhophores". 2. Cross, with five wounds in hands, feet, and heart. 3. Pillar against which Christ was bound during scourging; cock of St. Peter; bag containing thirty pieces of silver. 4. Three nails on shield; spear and sponge; scourge; hammer and pincers.

There are two effigies in the north transept, one that of a female in flowing robes, with hair banded and hands folded in prayer, inscribed in Lombardic capitals—

...DE PAYN TURBE VILLE GIT ICI
DEU DE LALME EI...

and the other that of a child. The communion-plate is Elizabethan in style, but is dated 1633. There are six bells, recast one hundred years ago. The registers begin from 1720. The old font is left out in the churchyard: it should certainly be taken more care of, as neglect of this kind does not redound to the credit of the Church.

The following singular epitaph on an old woman of eighty-five, killed by lightning in the last century, is remarkable for its orthography, and affords a proof that the terror of this kind of death in the popular mind lies more in the noise of the thunder than in the actual electrical shock:—

"Awake Dvll Mortals See yr Dubiovs stay
Frail is OVR make and Life soon pasts away
Myriads of changes take away OVR breth
And Mvltafariovs ways there are to death
Beneath lies one esteemed for life and age
By Thvnder forced to qvit this worldly stage
Tremendous death so suddenly to be
From Life's short scene moved to Eternity."

Coity Castle has been described by Mr. G. T. Clark in the *Archæologia Cambrensis* (vol. viii, Ser. 4, p. 1), and in his *Mediæval Military Architecture* (vol. i, p. 487). Coity was granted by Fitzhamon to Sir Pagan de Turberville, and the present Castle was in all probability built by his great-grandson, Gilbert de Turberville, in 1207. The land on which the Castle stands now belongs partly to Lord Dunraven and partly to the Nicholls of Merthyr Mawr. The plan consists of an approximately circular inner ward 48 yards in diameter, constituting the original castle, with a rectangular outer ward 68 yards long by 43 yards wide, forming a sort of tail added at a later period, the whole being surrounded by a ditch 100 ft.

wide. The Castle is approached from the churchyard by a gateway leading to the inner ward. Another gateway leads from the inner to the outer ward, and there is a third gateway at the far end of the outer ward. The keep is a rectangular structure containing vaulted chambers, with a central octagonal pier to support the roof. The hall, chapel, and other domestic buildings surround a rectangular courtyard in the inner ward. The round tower, seen on the outside, is a peculiar feature. The exterior view of the Castle is rather imposing, though inferior to many of the Edwardian border fortresses in general grandeur of effect. The interior is, however, very disappointing, as the structure is a mere shell, with few architectural details remaining, and nothing sufficiently picturesque to tempt the artist to bring out his sketch-book.

From Coity the party proceeded to Coychurch, a mile and a half distant to the south-east, and lying about two miles and a half east of Bridgend.

Coychurch or Eglwys Llangrallo.—The Rev. C. Ll. Llewelin, Rector of Coychurch, having received the members, conducted them to the church, and then delivered the following address:—

"Knowing your time to be limited, I propose to point out the details that appear most worthy of notice, and leave you to form your own opinion as to the general effect of the whole. The fabric has not undergone any material change during its restoration in 1870. In this instance the architect and archæologist worked together in unity, Mr. John Pritchard having faithfully carried out the suggestions made by Mr. E. A. Freeman, in his paper written on the church in 1857. In roofing over the chancel and transepts the architect departed from the model before him in the old roof of the nave. Whether the new roofs he has introduced are consistent with the style of the rest of the building it is not for me to judge; still they remain as records of his great artistic taste. The ancient oak cradle-roof of the nave has been preserved, but the old plaster ceiling removed. All worm-eaten and decayed wood has been replaced by sound material, so that in all human probability the roof will now endure for centuries to come. Along the top of the wall runs an oak cornice, principally old work, and only repaired in places, where required. Fixed against the cornice on each side are ten figures of angels bearing shields, exquisitely carved. Most of the shields are plain, but one has on it the arms of the Turbervilles, another the arms of the owners of Margam, and a third our Lord's five wounds in the hands, feet, and heart.

"The west front of the exterior, with its unique quatrefoil windows, is well worthy of your notice. When the church was restored in 1870 the tower was left undone, partly in consequence of lack of funds, and partly because of a difference of opinion as to the proper mode of treating it, and also because at that time there were no indications of its being in danger of falling. On the 7th of February 1877, the tower suddenly fell, crushing the south transept and greatly injuring the north transept and chancel, the

nave escaping with comparatively little damage. After the fall of the tower the east end of the nave was temporarily walled up, so that it might be used for Divine Service. The church remained in this state for about ten years; but its restoration, under the supervision of Mr. F. R. Kempson, was completed in 1888. Before the destruction of the chancel it contained two frescoes, on the jamb of one of the windows in the east wall, representing mitred ecclesiastics with keys hanging at their girdles.¹ There was also a piscina and the remains of a small altar. The old rood-loft was for some reason transferred to the chancel and used to form the ceiling, of which Dr. Freeman complains as hiding the upper part of the east window. It was similar in design to the lantern roof of the tower, having panels covered with the linen pattern. The panels of the reading-desk, mentioned in Mr. Freeman's paper, were of similar design; but both this and the rood-screen were too decayed to be preserved. In the chancel was an altar-stone 7 ft. long by 4 ft. wide, with the usual five crosses. There were also two ancient monuments, now removed to the north transept, and the tombstone of Thomas and Barbara Fleming, with two small feet carved in relief at one end. The gargoyles of the new tower are old, except one, which is a facsimile of the one that was partially broken when this part of the building fell. The stones of the walls destroyed by the fall of the tower were exceedingly small, hardly any being more than 8 in. long, and the majority not more than 4 in. long.

"The crosses in the churchyard are sadly in need of restoration, more especially that supposed by some to be the cross of the founder, St. Crallo, which was broken when the tower fell. Most of the fragments have, however, been carefully preserved; and, by the assistance of a drawing in the possession of Mr. F. R. Kempson showing its state when perfect, it might without much difficulty be again set up. Any help towards the repair of these most interesting inscribed monuments will be thankfully accepted."

Coychurch is cruciform in plan, and is a finer and rather earlier specimen of the same type as Coity Church. The chief difference between the design of the two is that Coychurch has side aisles to the nave, whereas at Coity there are none. Mr. Freeman speaks of Coychurch as having "a real west front, simple, indeed, and unornamented, but of admirable composition, and quite satisfactory detail".

Amongst the sepulchral monuments inside Coychurch is one of the Elizabethan period, in the north transept, inscribed in capitals, "+ Here lieth in grave the body of Thomas Ivans, Clerk, Parson of Coychurch, deceased the 2 day of April, 1591."

There are two monuments in the churchyard with minuscule inscriptions and Hiberno-Saxon ornament like that on the Llantwit

¹ A bronze key resembling those on the frescoes was picked up some time ago, but it is now lost.

Major stones. Both are illustrated in Professor I. O. Westwood's *Lapidarium Wallie* (plates 22 and 23). The inscriptions are very much weathered, but the name "Ebisor", which also occurs on the cross of Samson at Llantwit Major, can be read on both. One, a cross-shaft, about 4 ft. 6 in. high, and 2 ft. broad by 1 ft. 2 in. thick, stands at the east end of the chancel, outside. The other, which was mutilated by the fall of the tower, stood on the west side of the south transept. The base is still *in situ*, but the shaft was broken short off, and is placed upright against the south wall of the nave. The fragments of the head are put together on a flat tombstone. It is earnestly to be hoped that funds will be forthcoming for its restoration. In addition to these early crosses there are the shaft and steps forming the base of a fourteenth century churchyard cross.

The communion-plate is inscribed—

Ed. Gamage, A.M., Rector.
Jen. Dd. Yorath.
Llewelin William, } Wardens.
Thomas William, }

Llangan, two miles south-east of Coychurch, was the last place visited; but some of the party walked up to St. Mary Hill, rejoining the rest at Llangan, and were not by any means sorry to find afternoon tea being most hospitably dispensed by Mrs. Humphreys in front of the Rectory.

St. Mary Hill Church.—The name of the church indicates its lofty situation. The hill on which it is placed overlooks the valley of the Ewenny river. Behind is a wild down covered with sandstone boulders, the scene of fairs in modern times, and perhaps of Druidic ceremonies far back in the past. At all events, if the Druids did not avail themselves of the natural advantages of the place for rites such as theirs are supposed to have been, an opportunity was certainly missed. The church is a small building consisting of a nave and chancel. It has been well restored, except that the chancel-arch, a plain round Norman one, has been removed bodily and built into the north wall of the nave. The font is cup-shaped, with a bold roll-moulding round the top, probably Norman.

The most interesting object at St. Mary Hill is the churchyard cross, which was restored as a Jubilee memorial by the liberality of T. M. Franklen, Esq., of St. Hilary. The head, which is usually wanting in other places, is old, and also the steps. The socket-stone and shaft are new. The head is canopied, like those of the crosses at St. Donat's and Llangan. The two broad faces have double canopies with figures of saints, and the two narrow faces a single canopy with the Crucifixion on one side, and the Virgin and Child on the other.

Llangan Church.—There are no special features of interest in the church itself, but the two crosses in the churchyard are well worth going many miles to see. The oldest of the two stands near the west end of the church. It is a wheel cross, with a round head

3 ft. 4 in. in diameter, and a very stumpy shaft, 1 ft. high, and 1 ft. 8 in. wide by 8 in. thick. On the front is the Crucifixion, having the soldier holding the spear on one side, and the soldier with the sponge on the other. Below, on the shaft, is a man holding a horn in his left hand. This is the usual early Irish type of Crucifixion, copied from a Byzantine source. It differs from the later representations of the same subject in the fact that the Saviour is not dead, as was always the case after the twelfth century. When the Saviour is intended to be shown alive, the eyes are open and the limbs extended straight along the arms of the cross instead of being bent. On the back is a plain cross with four circular bosses in the angles. This stone has been illustrated by Professor I. O. Westwood in his *Lapidarium Walliæ* (pl. 25, figs. 1 and 2), and in J. R. Allen's *Christian Symbolism* (p. 153), where other examples of early Celtic crucifixions are given for comparison. The date of the Llangan stone is possibly eighth or ninth century. It is the only specimen of a Crucifixion of this early period in Wales, except the one upon a slab at Meifod, in Montgomeryshire (*Arch. Camb.*, vol. xi, Ser. IV, p. 183). The other cross at Llangan stands on the south side of the church. It is one of the most beautiful and perfect fourteenth century churchyard crosses in existence, the only other one at all to be compared with it in South Wales being at St. Donat's. At nearly all the other churches visited, the steps surmounted by the socket-stone, and in some cases the shaft, are to be seen; but complete heads occur only at Llangan, St. Donat's, and St. Mary Hill. At Porthkerry a portion of the head was in its place, until it was blown down in a storm some years ago (see *Arch. Camb.*, vol. vii, Ser. IV, p. 46). The head of the Llangan cross has two tiers of figures under Decorated canopies. The lower part is rectangular in plan, like the one at St. Mary Hill, having two broad faces and two narrow ones. The broad faces have double canopies, with the Crucifixion on one side, and a Pieta on the other. The two narrow faces have single canopies, with figures of saints or ecclesiastics. The upper part of the head is square in plan, having four equal faces, each with a figure of a saint under a single canopy. Above the upper tier of sculptured figures there appears to have been a small spire to complete the design.

Llangan Church is dedicated to St. Canna, who is supposed to have been the wife of St. Sadwrn (brother of St. Iltutus), and the mother of St. Crallo. The church of Llangan, in Caermarthenshire, is dedicated to the same saint, and the inscribed chair of Canna is still preserved there (see *Arch. Camb.*, vol. iii, Ser. IV, p. 235, and vol. vi, Ser. IV, p. 376). She is believed to have lived A.D. 500 to 542.

The font at Llangan has a round bowl with eight pointed arches round the bottom. It is difficult to assign a date, but it is certainly not Norman.

EVENING MEETING, WEDNESDAY, AUGUST 15TH.

The evening meeting was held in the Town Hall at 8.30 P.M., there being, as previously, a very good attendance. The chair was taken by the Ven. Archdeacon Thomas, who called upon Mr. Stephen W. Williams, F.R.I.B.A., to read his paper on "Further Excavations at Strata Florida Abbey". The paper was illustrated by a ground-plan and a large number of drawings of architectural details discovered in the course of the excavations. Mr. J. W. Willis-Bund, F.S.A., then followed with another paper¹ bearing on the same subject, entitled "Who was the Founder of Strata Florida?"

After the reading of Mr. Willis-Bund's paper, Mr. Banks remarked that Leland's statement that Rhys ap Tewdwr was the founder of the Abbey of Strata Florida might well be disregarded. There could be no doubt that Rhys ap Griffith built the Abbey and endowed it. In an early volume of the Journal there is a translation of an *inspeximus* of a series of charters relating to the Abbey. Speaking from recollection of its contents, Rhys, Prince of South Wales in 1184, confirmed by his charter, at the Church of St. Bridget, Rhayader, his previous donation to the Abbey of the large possessions there described, in the presence of his army, stating in his charter that he began the building, and cherished it when built. There could be no doubt as to the authenticity of his charter, as it was confirmed by King Henry III, who must have been satisfied as to the fact. He considered it unimportant that Rhys ap Griffith did not in his charter claim to be the founder. It was unnecessary to say more than that he built and endowed the Abbey. With regard to the burning of the monastery, he thought that the *Chronicle of St. Werburgh* gave a satisfactory account of the cause of the fire. The *Welsh Annals*, under the date of 1286, merely recorded the occurrence of a fire—"combustio domorum apud Stratam Floridam"—without assigning the cause. The *Chronicle of the Princes* did no more. The *Chronicle of St. Werburgh*, the writer of which was contemporary with the event which he describes, states that twelve days before Christmas 1284, the bell-tower was struck by lightning at night, and that the fire, after destroying the tower, extended to the roof of the church, which was covered with lead, and burnt the whole of the church, except the presbytery, to the walls; a fact which receives confirmation from the frequent occurrence in all parts of the ruins of melted lead. This fire took place when Edward had completed his conquest of Wales in a time of peace. If the King's forces had set fire to the church, the Welsh annalists would have recorded the fact. The second fire, referred to in King Edward's licence to rebuild, took place in 1295, while Wales was in a state of insurrection on account of the King's

¹ Both papers will appear in the January Number of the *Arch. Camb.* for 1889.

attempt to levy a fifteenth there, as he had done two years before in England. In his licence to rebuild the Abbey, the King attributes this fire to his forces contrary to his wish. It does not follow that the fire extended to the church. The insurgents may well have occupied part of the monastic buildings, and the Royal forces may have set fire to them in order to dislodge the insurgents.

Mr. David Lewis differed from the view taken by Mr. Willis-Bund, and said it was a large thing to ask them to say that the *inspeximus* of the foundation was a forgery.

Mr. Edward Owen followed in a similar strain. He considered the non-mention of the names of De Clare in any of the confirmations of the charter a fatal objection to Mr. Willis-Bund's theory. With regard to the statements that it was unlikely a Welsh prince would found a Cistercian house, there were several such foundations in North Wales.

Mr. S. W. Williams said it seemed to be forgotten that there were two abbeys—one at Ystradflur, two miles from the abbey they had been discussing. This was the abbey founded by Rhys ap Tewdwr. Then came his grandson, who founded Strata Florida. He had himself inspected the site of the former abbey.

Mr. Willis-Bund replied, and the meeting shortly afterwards terminated.

EXCURSION, THURSDAY, AUGUST 16TH.

The day's work commenced with a walk round the town walls of Cowbridge, and an examination of the church.

Town Walls of Cowbridge.—A glance at the map shows the importance of the position occupied by Cowbridge, or Pontfaen, in the centre of the vale of Glamorgan, and lying probably on the old Roman military road through South Wales. The town was an appanage of the Castle of St. Quentin, and it was walled round before the thirteenth century. The most complete remains of the wall are on the south side, where a gateway is still standing. The wall, where perfect, is 25 ft. high, having a batter outside, and a walk inside the battlements 14 ft. wide.

Cowbridge Church.—The plan comprises a nave; choir under the central tower; an aisle, with an arcade of five arches, extending the whole length of the south walls of the nave and choir; and a chancel with a north aisle. The tower is of the same military type noticed at Ewenny and elsewhere; and the moulded capitals and pointed arches in the interior show that it is Early English in style. There is a fine wall-tablet erected to the memory of Wil^m Carne of Nash, 1626, in the south aisle of the nave.

The inscriptions on the communion-plate are as follow :

“ Ex dono A. Bowens ux. T. Wilkins gen. A^o 1744.
Llanblethian Parish
I.H.S.”



GATEWAY.—ST. QUINTINS CASTLE.

The Phototype Co., 302, Strand, London.

“The gift of Hester Wilkins widow
to
the Parish of Llanblethian in the county of
Glamorganshire
1739.”

The party now returned to the Bear Hotel, where carriages were in readiness to proceed to St. Quentin's Castle, half a mile south-west of Cowbridge.

St. Quentin's Castle.—The river on which Cowbridge is situated runs through a wide valley before it reaches the town, but below this valley suddenly contracts. At the narrowest point St. Quentin's Castle occupies the summit of the east bank of the river, whilst Llanblethian Church is in a similar position on the opposite side. References to the history of the Castle occur in Mr. J. A. Corbett's paper on the “Manor of Llanblethian”, read at the evening meeting, held Tuesday, August 14th. Mr. Corbett points out that the name St. Quentin is of comparatively modern origin, for in an inquisition *post mortem*, made on the death of Gilbert de Clare, Earl of Gloucester and Hertford, and Lord of Glamorgan, who was killed at Bannockburn in 1314, the fortress is called Talevan Castle. The present building is of the fourteenth century, and was commenced long after the time of St. Quentin, even if he ever held the manor, of which Mr. Corbett can find no proof. Most of the fortifications have been destroyed, with the exception of the fine gateway shown in Mr. Banks' photograph. Mr. F. R. Kempson's keen eye detected a very peculiar bit of architectural detail in the front of this gateway. Where the chamfered arch-mouldings usually produce an elliptically curved line of intersection with the splayed jambs (as in the interior of an Early English window), a small cusped sinking is substituted. The inside of the gateway now serves the ignoble use of a cowshed, and a very dirty one too. This beautiful ruin is certainly deserving of better treatment.

From St. Quentin's a drive of nearly two miles brought the party to the charming old manor-house of Llanmihangel.

Llanmihangel House.—The house is approached through a magnificent avenue of ancient yew-trees, whose dark shadows must look ghostly enough in the dusk of a winter's evening, and, even with the bright midsummer sun shining through the branches, produce an effect of sombre melancholy. Llanmihangel is one of the few old Welsh manor-houses which are still inhabited; and it is greatly to the credit of Mr. Jenkins, the present tenant, that, although the interior is kept beautifully neat and clean, there has been no attempt to destroy the old appearance in any way by injudicious modern additions or alterations. The largest room in the house is panelled with oak, almost up to the top of the walls. It has a plaster ceiling, divided geometrically into recessed panels of different shapes by moulded bars projecting above the surface of the rest. The fireplace, which Mr. T. M. Franklen has very kindly photographed by Mr. Jenkins' permission, is a good specimen of

sixteenth century carved stonework. The flat Tudor arch, under which a modern grate is fixed, has six coats-of-arms above it, with scrolls and inscriptions nearly obliterated.

The following notes on the heraldic devices on the chimney-piece have been contributed by Mr. Iltyd Nicholl:—

“On the fireplace at Llanmihangel Place, which house is said to have been built by James Thomas (sheriff 1550), are five coats-of-arms that I can account for; the other one (on the left) is the griffin segreant of the Morgan family. The only connection that I can find between the families of Thomas of Llanmihangel and Morgan is that Jane Van, wife of James Thomas, was granddaughter of Sir Thomas Bowles and Maud his wife, who was daughter of Sir Thomas Morgan of Pencoyd, co. Monmouthshire. I do not see why the Morgan arms should be carved on the chimney-piece, as Maud Morgan was not an heiress or co-heiress; but there they are.

“No. 2 shield contains the paternal arms of James Thomas—Per pale *az.* and *gu.* three lioncels ramp. *arg.*, crescent for difference. The grandfather of James Thomas, John Evan Thomas, was the first of the name at Llanmihangel; he married the heiress of Llanmihangel, Eleanor, daughter and heiress of Thomas Ddu ap Gronow, by Agnes Chichele, heiress of Llanmihangel. John Evan Thomas was grandson of Thomas ab Gwiliem Jenkin Herbert, who died 1438, and of his wife, Maud, daughter and co-heiress of Sir John Morley of Raglan Castle. Arms of Morley, a lion ramp.

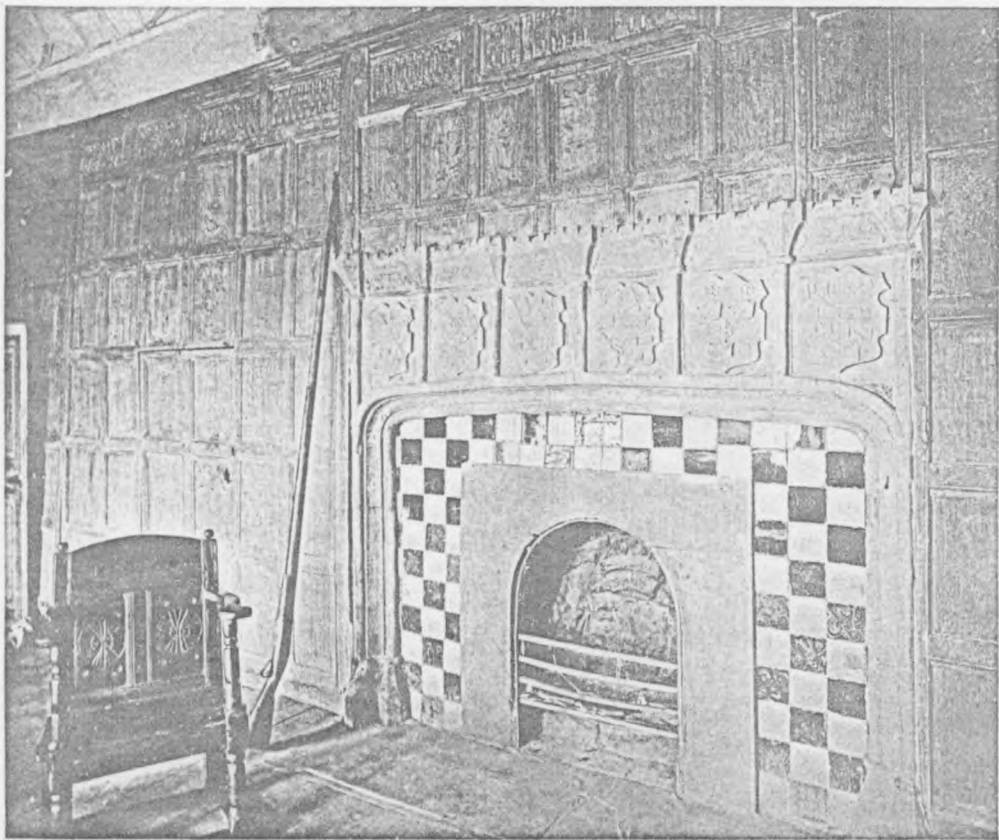
“No. 3 shield is the quartered arms of James Thomas, together with the quartered arms of his wife, Jane Van. The arrangement of the quarters is not according to the present system of heraldry; but the dexter half of the husband's shield is impaled with the sinister half of the wife's quartered arms.

“No. 4. Quarterly of four. Arms of James Thomas, reversed, for sake, perhaps, of balancing shield No. 3: 1. Eleanor Ddu, being the arms of her ancestors the Cantelupes; 2. Herbert *alias* Thomas; 3. Morley; 4. Cradoc.

“No. 5. *Cradoc.* *Az.* semee of cross crosetts three boars' heads coupé *arg.* Thomas Ddu ap Gronow above mentioned was grandson of Elizabeth, daughter and co-heir of Wilcock Cradoc.

“No. 6. Quarterly 1 and 4. *Sa.* a chev. betw. three butterflies displayed *arg.*, for Van; 2 and 3. *Ermine* a bend *gu.*, for Walsh of Llandough, whose co-heir married Van in the fourteenth century.”

Mr. Jenkins had hospitably prepared refreshments for his guests in an adjoining room, where they had also an opportunity of admiring a curious piece of tapestry, in good preservation, representing Queen Esther supplicating mercy for the people of God of King Ahasuerus. Before leaving, the Rev. D. Evans, Rector of Llanmaes, exhibited his parish register, the oldest in the neighbourhood, and dating from 1583. In this register is the entry of the death of Ivan Yorwath, who was reputed to have died at the mature age of 180. It reads: “Ivan Yorath, buried on Saterdaye,



The Phototype Co., 38, Strand, London.

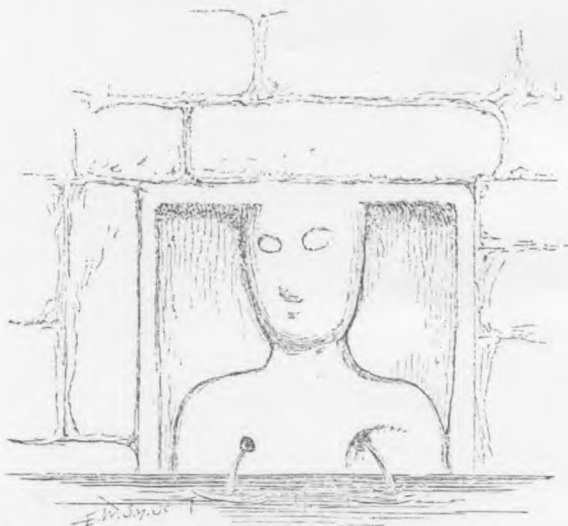
CHIMNEY PIECE AT LLANMIHANGEL.

the 29th day of July, anno dom'i 1621, æt an'o regni reigis vicæimo primo annoquæ ætus circa 180; he was a sowdier in the fights of Bosworthe, and lived at Llantwitt Major, and he lived by much fishing."

Llanmihangel House is situated on a hill-side close to the church, which lies in the valley below.

Llanmihangel Church.—The plan of the church consists of a nave, chancel, and south porch. At the time of the visit of the Association it was undergoing restoration by Mr. F. R. Kempson, F.R.I.B.A., who formed one of the party, and explained the architectural details of the building. The tower is of military character, with cross loopholes, and has a saddle-back roof. The old cradle-roof of the nave still remains. The design of the principals is different in the portion above the rood-loft. The font has an octagonal bowl on a circular stem, and is devoid of ornament. There is a curious effigy outside the church at the east end.

The water of the well near the church flows through the breasts of a woman's bust, sculptured in relief upon a slab of stone.



Sculptured Bust, St. Anne's Well, Llanmihangel.
An inch and a half scale.

The next place on the programme was Llantwit Major, two miles south of Llanmihangel. Here an address was delivered in the churchyard by Mr. J. Romilly Allen, on the inscribed and sculptured crosses, which will be published, with illustrations, in a future number of the *Archæologia Cambrensis*.

Llantwit Major Church.—At least twelve churches in Wales are dedicated to St. Ilyd; but all these sink into insignificance when

compared with Llan Iltyd Fawr, or *the church of St. Iltyd*. From the fifth century to the present day this place has been associated with the varying fortunes of the Welsh Church; and from the College founded here by St. Iltutus a noble army of saints went forth to pursue their missionary labours in Brittany, Wales, and Cornwall, making the name of the Glamorganshire village whence they came a household word throughout Celtic Christendom. Nothing now remains of the structures or monuments of the earliest period; the crosses in the churchyard being of the ninth century, and no part of the present buildings older than the twelfth century. Nevertheless, an indescribable air of antiquity seems to pervade the whole place, and one feels almost intuitively that one is standing on holy ground, hallowed by thirteen centuries of pious devotion. The church lies in a hollow, with a flight of steps leading down into the churchyard from the road. The path along the south side is paved right up to the building, and a stone seat against the wall affords an opportunity to rest and contemplate the curious graves, covered with water-worn quartz pebbles. The photograph here reproduced was taken before the recent restoration. It will be noticed how much better the small slates of the old roof look than the larger ones, with which the whole is now covered. The reason of this is, that the lines of overlapping of large thin slates are so straight and fine that they give no variety to the surface, the appearance of "texture" produced by the closely packed undulating lines of small slates being entirely wanting. The folly of destroying the picturesqueness of the old roof by using large slates was very clearly put before the committee for the restoration by the gentleman who reported on the work on behalf of the Society for the Protection of Ancient Buildings. As is usual in such cases, the so-called practical man on the committee succeeded in persuading his colleagues that artistic considerations should be treated with the contempt they deserve.

The architectural peculiarities of Llantwit church have been a great puzzle to antiquaries. Mr. E. A. Freeman's views on the subject have been expressed in a paper in the *Archæologia Cambrensis* (vol. iv, Ser. 3, p. 31). The plan consists of a nave, with north and south aisles, and tower at the west end; chancel; a second western church, now disused, having a south porch; and further west again is a ruined building, which has been conjectured to be a Galilee or large western porch, with a sacristan's house on the north side. The oldest portion of the church comprises the nave with its aisles and the chancel. The details of the capitals of the arches under the tower are Early English. The three original cusped lancet windows remain in the north wall of the chancel. The windows in the aisles belong to the end of the thirteenth century, when tracery was just beginning to develop. As examples of the simplest kind of tracery, consisting of two cusped lancets and a circle under a pointed hood moulding, they are very instructive. A window of the same class is to be seen at

Llangwm Church, Monmouthshire. The windows in the north and south walls of the nave-aisles at Llantwit are all of the same pattern, and symmetrically situated opposite each other, four on the north and three on the south, the doorway occupying the last bay to the west. The aisles have also triple-light cusped lancet windows at the east, and small single cusped lancets at the west end. The east window of the chancel is modern, and Perpendicular in style. East of the tower are three perfectly plain pointed arcade-arches springing from square piers, being nothing more than openings cut square through the wall, as is the case in many of the Pembrokeshire churches.¹ There is a clerestory to the nave, and the proportions of this part of the building, possessing as it does great height and breadth in comparison to its length, are very striking. The extreme simplicity, amounting almost to rudeness, of the arcade-arches contrasts remarkably with the finish of some of the other architectural details. During the restoration of the nave and tower, completed this year, the oak timbers of the roof were entirely replaced with pine. The old design was adhered to, except that the edges of the curved timbers were chamfered instead of being left square, the carved bosses were omitted, and the moulding of the wall-plate inaccurately copied. The roof is constructed entirely with trussed rafters, and has no principals. The span of the roof is 21 ft. 8 in., and the length of the nave 41 ft. There are twenty-seven trussed rafters, 1 ft. 7 in. centre to centre. The truss consists of a tie-beam near the top and curved pieces below, as in the cradle-roof. In the course of the restoration the following discoveries were made: (1) a small window opening out of the east wall of the tower into the nave; (2) a second clerestory window on the south side; and (3) several wall-paintings of late date under the whitewash of the walls of the nave. The beautiful stone Perpendicular reredos in the chancel, and the thirteenth century niche with the Tree of Jesse² carved upon the sides, are well worthy of attention. The latter has been engraved in the *Archæologia Cambrensis* (vol. iv, Ser. 3, p. 43). The font is ornamented with a scale-like pattern, like those at Kenfig, St. Donat's.

The western, or old church as it is now called, Mr. Freeman believes to have been the parochial church before the Dissolution, and the eastern one to have belonged to the monks. Although called the old church, it appears to have been erected about one hundred years later than the rest of the building. The oak roof has some well-carved bosses with the coats-of-arms of the Bassetts, the Berkerolles (see *Arch. Camb.*, vol. iv, Ser. 3, p. 284). This part of the church is at present used as a burying-place, and against the walls are placed two monuments of the ninth century, namely,

¹ Similar arches existed at Llantrissant Church, Glamorganshire, before it underwent a destructive restoration.

² The bottom piece of this Tree of Jesse is built into the wall of the old western church, under a niche.

the inscribed cross of Howel the son of Res, and a cross-shaft covered with interlaced work on the four sides (engraved in Professor I. O. Westwood's *Lapidarium Wallie*, plates 5, 6, and 9). Besides these there are also two later sepulchral monuments of great interest: (1) a semi-effigial slab of the twelfth century, inscribed in Lombardic capitals—

NE PETRA CALCETVR QVI SVB IACET ISTA TVETVR,

which has been frequently engraved (*Arch. Camb.*, vol. ii, p. 319; *Archæologia*, vol. vi, p. 24; Boutell's *Christian Monuments*, p. 127; and Cutts' *Sepulchral Slabs*); and (2) an effigy of the Elizabethan period which affords an interesting example of costume, and shows how the interlaced work of the early sculptured stones was adapted to decorative purposes in more recent times. The revival of interlaced work in the sixteenth century may be perhaps traced to a Venetian source, as many of the books on embroidery published there contain similar patterns.

On the south side of the churchyard are the steps, socket-stone, and shaft of a fourteenth century cross. There are also three monuments of the ninth century: (1) the inscribed cross-shaft of Samson, Arthmael, and King Juthael, standing against the east wall of the south porch of the old western church; (2) a cylindrical pillar with interlaced work, against the north wall of the old eastern church; and (3) the inscribed shaft of the cross of Samson, Iltet, and Ebisar, standing in the middle of the churchyard on the north side (see Professor I. O. Westwood's *Lapidarium Wallie*, pls. 3, 4, 7, and 8).

After partaking of an excellent luncheon, served in the Town Hall, by Mr. T. Rees, of the New White Hart, an inspection was made of the large collection of bronze implements dug up at Llantwit, belonging to Councillor R. Price (see *Arch. Camb.*, vol. iv, Ser. 5, p. 151). Should Mr. Price present these valuable relics to the Cardiff Museum at some future time, he will earn the lasting gratitude of all archæologists. The more antiquities which remain in private hands the less chance there is of any advance being made in archæological science. Glamorganshire has been particularly prolific in finds of bronze implements; and if all the specimens could be brought together in the Cardiff Museum, some idea could be formed of the state of culture of the inhabitants of South Wales during the bronze age. The question is one of national importance, and it ought to be realised that every person who hoards up objects of interest privately, instead of adding them to a public collection, is keeping back so many facts from the general store of knowledge. He is, to put it plainly, retarding the progress of science in order that he may feed his vanity by posing as the possessor of rare treasures, or gratify the mania of a curio-hunter.

The bell in the belfry of the Town Hall at Llantwit, although a comparatively modern one, commemorates St. Iltyd in its inscription:—"Sancte Iltute ora pro nobis"—and may perhaps have suc-

ceeded one of the quadrangular bells of the early Celtic Church. The steps of a cross still remain in the village above the church, and the surrounding houses are good specimens of domestic architecture of the seventeenth century.

Leaving Llantwit Major with no small regret that time did not permit of a longer stay, the carriages proceeded to the site called Caerwrgan, where the members of the Association and their friends had been invited to inspect the excavations being made for the Cardiff Naturalists' Field Club, under the able superintendence of Mr. John Storrie, Curator of the Cardiff Museum.

Excavations at Caerwrgan.—The following account of the discoveries appeared in the *Athenæum* for October 20, 1888, No. 3182:—

"ROMAN REMAINS IN GLAMORGANSHIRE.

"Cardiff, Oct. 8, 1888.

"The quaint town of Llantwit Major, dear to the heart of students of British Church history and Cambrian archæology, has been invested with new interest by the discovery in its neighbourhood of considerable Roman remains. The merit of this discovery rests with Mr. John Storrie, the Curator of the Cardiff Museum. On his suggestion excavations have been made during the last few weeks in a field locally known as Caermead, lying about a mile to the north-north-west of Llantwit Major, and about half a mile west of the road to Cowbridge.

"In this field Mr. Storrie had observed about a year ago certain grass-grown ridges, running four square, and enclosing an area of about eight acres. His first impression was that these ridges marked the site of an early British camp; but on inquiry among the elders of the town of Llantwit he found that at the beginning of this century the walls of extensive buildings on this site had been levelled with the ground and the stones carried off to neighbouring lime-kilns. This, he thought, might perhaps be accounted for on the supposition that modern buildings had been erected on an ancient site. No attempt was ever made by any local antiquary to examine these mounds and ridges properly, although theories as to their origin existed in abundance. It was clear from the moment the excavations were begun that the remains were Roman, for fragments of Romano-British pottery and brass coins of the third century were early brought to light. But no one expected to find so far to the south of the Via Julia the remains of a large and well-appointed Roman villa, showing indications of military occupation either here or in the near neighbourhood. Yet the building whose foundations are now partly laid bare must have covered about two acres out of the eight which are enclosed and defended by a rampart. In all, the outlines of fifteen rooms have been traced, and of these three are sufficiently exposed to afford an opportunity of judging as to their probable use and style of mural decoration.

"The largest lies on the north side, and measures 60 ft. by 51 ft. Mr. Storrie believes it to have been used as a *prætorium*. In some parts the walls are about 9 ft. high—the highest yet met with—and still retain their original wall-plaster with decorations in blue, vermilion, and Pompeian red, these colours being as bright as when first laid on. Next to this room, and at its south-east angle, lies a small room about 12 ft. square, which appears to have been used as a workshop, if one may judge by the metallic fragments, clinkers, and bits of coal which strew the floor. Immediately to the south of this artificers' room is a large hall, which has so far proved the chief point of interest, 39 ft. by 27 ft. in its full extent. It is divided into two compartments by a slight wall, pierced by a wide door-space, most likely covered by curtains easily removable when it was needful to throw the two compartments into one. The larger compartment is about twice the size of the other. The entire floor of the hall has been adorned with tessellated pavement, and enough remains to show its general design and quality; but in places it has been sadly mutilated. The pattern has one or two singular features. It consists of circular, square, and star-shaped devices, enclosed in hexagons and octagons. The cross corners (north-east and south-west) are each occupied by a two feet square of single fret, and at the north-west corner there is a much larger square of single fret in five colours. The outer border is made up of thirty-two rows of brown tesserae. Next to this comes a double-fret border in three colours, red, white, and brown, within which is a pretty framework of diamonds and triangles enclosing the central bordering, which is white and blue. Then come the round, square, and star-shaped devices just mentioned, which are made of small and fine-grained tesserae. Of the colours employed, the pale sea-green and dark olive are different from those at Caerleon and Caerwent, Monmouthshire, the nearest sites at present of similar discoveries to those at Llantwit Major. The other colours are red, brown, blue, and white. The red tesserae are made of common brick, the white of marble, and the green, apparently (they have not yet been tested), of some volcanic ash.

"In laying bare the pavement of this hall no fewer than forty-one human skeletons of both sexes and all ages have been met with, and among them the bones of three horses. In one instance a human skeleton lay beneath that of a horse in such a position as to indicate that the horse had crushed and killed the man by falling upon him. It is evident that this hall had been the scene of a massacre, for in nearly every instance the skull or facial bones have been fractured, and the bodies lie over one another in confused heaps. In four instances there had been an attempt at burial. For this purpose the pavement was torn up and the body laid in an opening not more than six inches deep, its feet towards the east, and then surrounded with stones in the form of a coffin and covered with a few inches of earth. The unburied bodies belong to a small race with brachycephalic skulls; but those that are

buried were clearly men of a larger size, and had skulls of the dolichocephalic type. It is reasonable to suppose that the former represent the natives of the district, and the latter the attacking party.

"Nothing of value has been met with in the way of pottery, excepting a cinerary urn, which was found a few feet beneath the surface on the outer side of the north wall. There are still traces of a mound having been raised over it. This mound had been cut through and partly levelled at the time when the wall was built; but the urn with its contents remained undisturbed in its original position and beneath its stone covering. A small quantity of charcoal and calcined bones lay at the bottom of the urn, and all the rest of the interior was filled up with worm-castings. The other specimens of pottery are common black and grey ware, and, with the possible exception of a small piece of Samian, are all of Romano-British make.

"Only six or seven coins have been obtained thus far, and all but one of these are Roman Imperial brass in rather poor condition, and represent the latter half of the third century, to which belong the vast majority of Roman coins hitherto found in Glamorgan-shire. About ten years ago two thousand of these were discovered by a workman in the cleft of a rock at Aberkenfig, three miles to the north of Bridgend. The two best preserved coins found at Llantwit are of Victorinus and Maximianus I. The exceptional coin is Greek; but nothing more can be said of it, as only two letters of the legend are legible.

"The personal ornaments discovered, such as fibulae, pins, etc., are few in number and of little consequence.

"In stonework there are two or three items that deserve mention. In addition to the base and part of the shaft of several columns, the workmen have come across the lower portion of a doorway which, when first exposed, was nearly complete. This doorway led from the artificers' room into an adjoining passage. When first found the jambs to the height of 4 ft. were in their original position, as also was a circular block of stone with its socket-hole $1\frac{1}{4}$ in. in diameter and $1\frac{1}{2}$ in. in depth, for the door-pivot to work in. Several stone mortaria for pounding meal have been secured, and among them a few fragments of earthenware mortaria used for the same purpose. The inner surface of these earthenware mortars had been rendered rough by the insertion of grains and chips of flint.

"Among the carved stone relics the most noticeable is a roughly wrought pinnacle in Bath oolite, about 2 ft. high. It is cut in the shape of four pillars supporting a hexagonal top-piece, which is finished off by a device in flowers or fruit. This small pinnacle has all the look of an ornament intended for the roof of a Christian church. The workmanship is so rough and indeterminate in style that its date must be left an open question.

"It remains to notice the hypocaust, situated at the north-west

angle of the building area. Whether this belonged to a caldarium, a sudatorium, or a tepidarium cannot at present be determined, as no part of the superstructure remains *in situ*. The size of this bath—if, indeed, it was a bath—is 26 ft. by 22 ft. 6 in., and points to public rather than private use, and to a considerable Roman or Romano-British settlement in the near neighbourhood. But its size is not so remarkable a feature as the odd construction of the hypocaust. This is made up of piers of the most irregular shape. The appropriate name of ‘islands’ has been found for these singular constructions. As may be imagined, the channels for smoke and heated air are as amorphous and unsymmetrical as the piers by which their shape and course are determined. It can hardly be said that this hypocaust shows any leading passage for the smoke, for all the passages twist and turn into one another with the involvement of a maze. One of the workmen dryly remarked that ‘the smoke and hot air must have needed a special training to find their way from the furnace on the north to the chimney on the south’.

“While these excavations have been going on, special attention has been called to the traces of a Roman road leading from this site—Caer Wrgan—to another site of no small interest called locally Tre Wrgan, half a mile away to the west. That a connection must have existed between Wrgan’s Castle and Wrgan’s Town is evident, if only from the fact that the well which afforded their common water-supply lies halfway between the two places. It now transpires that when the house called ‘The Downs’ was built on the site of Tre Wrgan, twenty-seven years ago, the workmen, in digging for foundations, came upon remains which, judging by the account given of them, must have been Roman. It is matter of deep regret that no proper notice was taken of these discoveries at the time when they were made.

“This discovery of Roman remains in the neighbourhood of Llantwit Major raises several questions not very easy of settlement. Foremost among these are the questions: 1. Is this the ancient Bovium or Bomium of the *Itineraria Antonini*, for which Boverton on the south-east and Cowbridge on the north have put in rival claims, without, however, offering any satisfactory vindication of them? 2. Have we here not merely a Roman villa, with semi-military and domestic *entourage*, but a veritable military station for the protection of the Via Julia against inroads from the south coast, of which this field affords most extensive views to east and west? 3. Was this Roman road from Caer Wrgan to Tre Wrgan part of a Via Maritima which is supposed to have run from the Via Julia through Bovium—wheresoever that town lay—to the sea-coast? 4. Was this the earliest site of one of the first monastic colleges or schools in Britannia Secunda, founded, as is alleged, by St. Germanus on his second visit to this country, 447 A.D., and of which Iltud was the head and Lupus the bishop?¹ And, once

¹ “Achau y Saint” in *Horæ Britannicæ*, vol. ii, p. 161.

more, Was this large hall, where the skeletons of men, women, children, and horses have been found, the scene of one of the massacres perpetrated by Irish pirates in the fifth century, of which we read in the pages of Cadoc, the historian of the neighbouring College of Llancarvan?

“W. E. WINKS,
“Hon. Curator, Cardiff Museum.”

Leaving Mr. Storrie to continue his work without further interruption, half an hour’s drive along a road commanding a magnificent view of the Bristol Channel brought the party to St. Donat’s Castle, two miles west of Llantwit Major, where they were received by Dr. Stradling Carne, the owner of the mansion. After being conducted through the various apartments by Dr. Carne, and having admired the pleasing prospect to be seen from the windows facing the sea, the church in the valley below was inspected.

St. Donat’s Castle and Church.—This place was visited by the Association during the Bridgend Meeting, and the Castle has been described in the *Archeologia Cambrensis* (vol. xv, Ser. 3, p. 276). Those who wish to get a good idea of the general appearance of the building cannot do better than consult Mr. G. T. Clark’s *Thirteen Views of the Castle of St. Donat’s, with a Notice of the Stradling Family* (Cardiff, 1871); and the history of the owners will be found in the *Limbus Patrum Morganik et Glamorganik* (Lond., 1886), by the same author. The situation of the Castle, at the mouth of a well-wooded ravine running up from the Bristol Channel, is admirably chosen for defensive purposes. Now, when the age of bloody civil warfare has happily passed away, the scene looks peaceful enough, and the spectator thinks only of the sylvan beauty of its surroundings, as he watches the rocks wheeling round the church tower, far down in the valley below.

St. Donat’s Castle has been in the possession of the Stradling family since it was given to its first founder by Fitzhamon in 1090. The present castle was built by Sir William Stradling in the fifteenth century, and was added to in the sixteenth century. To give some idea of its extent, it may be mentioned that there are 134 rooms and 14 staircases within the building. The floors were originally of masonry, but they have been recently replaced by oak ones. During this alteration the skeletons of thirteen persons, who are supposed to have been killed during one of the sieges, were discovered. Large sums of money have been recently spent by Dr. Carne in making the Castle habitable. It is at present a thoroughly comfortable modern residence, but at the same time the interior has been fitted up in excellent taste with oak panelling and old furniture which is quite in keeping with the ancient appearance of the exterior. Such of the party as were collectors of china could not help admiring the many valuable specimens of oriental and English porcelain scattered about on the various cabinets in the reception-rooms. The Castle is built round

a large courtyard, with a fountain in the centre, and decorated round the walls with circular terra-cotta medallions enclosing male and female busts. The great dining-hall is of the Tudor period. It has a fireplace similar to the one at Llanmihangel. In the *Archæologia Cambrensis* (vol. xi, Ser. 3, p. 35) an interesting account is given of the "invention of the cross" inside an ash tree, blown down in a storm in 1559. The cruciform marking on the wood was probably accidental, but the matter caused considerable excitement at the time.

A flight of steps leads down the precipitous hill-side from the Castle to the Church. The plan consists of a nave, with west tower and north porch, and a chancel with a chapel containing the Stradling tombs on the north side. The chancel arch is a round-headed Norman one. In all the other churches visited during the Cowbridge Meeting the jambs of the chancel-arches were either perfectly square, or simply chamfered, but here the angles facing the nave are decorated with a small column having a capital just below the abacus moulding.

The font is ornamented with a scale-pattern, as at Llantwit Major and Kenfig. The font-cover is of painted wood, and on the top was noticed part of a bronze fifteenth century processional (?) cross with the symbols of the four Evangelists on the ends. It has obviously no connection with the font-cover, and should be removed and placed in a more appropriate position. The stone altar, with its five crosses, still remains. There is also a piscina and a bracket in the chancel, a rood-stair in the nave, and stoup near the north door.

The chapel on the north side of the chancel contains a fine altartomb. On the west wall of this chapel is a helmet on a bracket, and below three very curious memorial-tablets of painted wood.

The fourteenth century cross in the churchyard is of graceful proportions, and quite perfect. It is of the same type as the one at Llangan. The subjects on the canopied head are the Crucifixion and the Virgin and Child.

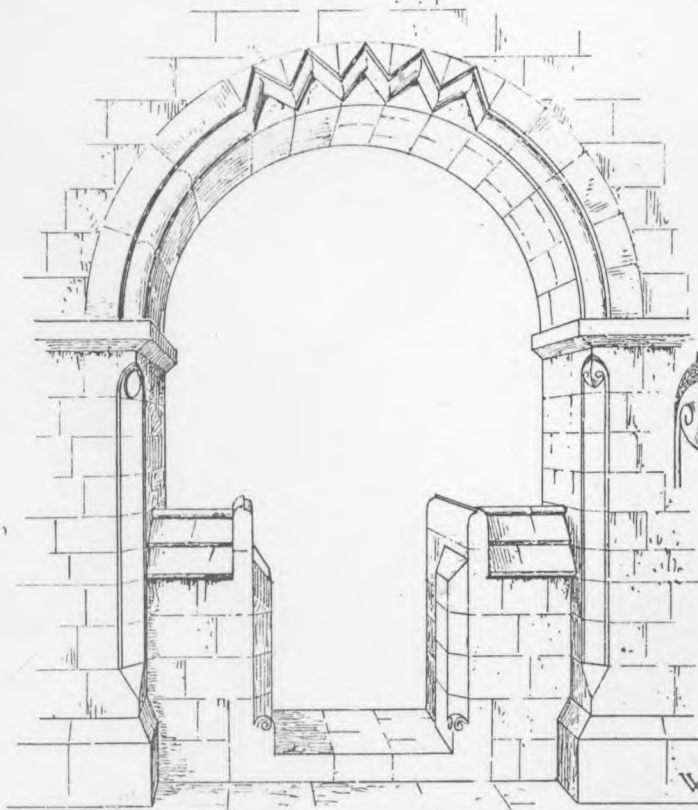
The communion chalice and cover is Elizabethan, the plate inscribed "E. S., 1710."

The day's excursion terminated with an examination of Marcross Church, lying a mile north-west of St. Donat's. The members fortified themselves for the drive of six miles back to Cowbridge by tea, hospitably provided at the Rectory by the Rev. Pryce Wilson Jones.

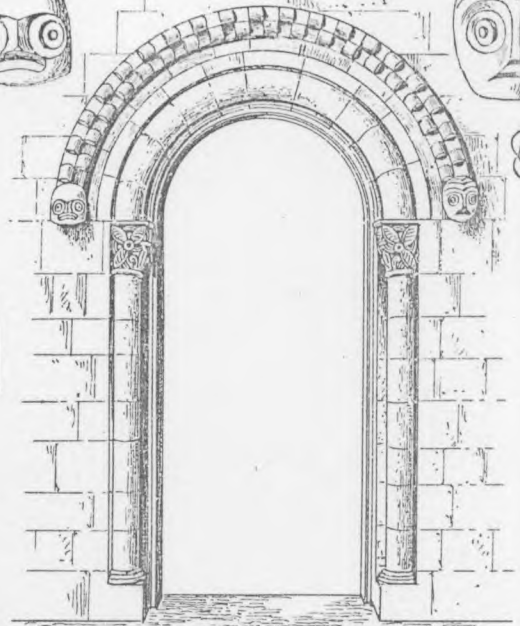
Marcross Church.—Although a very small building, Marcross Church is one of exceptional interest, and contains some unique features. It is to be restored¹ from the plans of Mr. F. R. Kempson, F.R.I.B.A., who, being one of the party on this occasion, was called upon to say a few words about the architecture of the structure. The plan consists of a nave, with west tower and south

¹ The estimated cost of the restoration is £550. Subscriptions should be sent to the Rev. P. R. Jones, Marcross Rectory, Bridgend.

MARCROSS.



CHANCEL ARCH



NORTH PORCH

W.C.S. DEL.

SCALE OF ^{INS} 12 6 0 1 2 3 4 5 6 7 FEET

porch, and a chancel. The tower has a saddle-backed roof, like many others in the district. The south doorway and chancel-arch are Norman, their appearance being clearly shown on Mr. Worthington Smith's careful drawings. The south doorway has a billet-moulding and grotesque heads at the terminations. The moulding of the chancel-arch has a unique peculiarity. On each side next to the springing the roll-moulding follows the curve of the arch, but at the top it suddenly changes into four bold chevrons. The stone screen between the jambs of the chancel-arch is also remarkable.

There is a pillar-stoup in the nave with a top shaped like a Norman cushion-capital. The font is round, with a roll-moulding at the top and bottom; it is probably Norman. The base of the churchyard cross is now used to support a sun-dial. A low side-window for lepers is to be seen in the chancel. The registers date from 1737.

EVENING MEETING, THURSDAY, AUGUST 16TH.

At the evening meeting, which was again held in the Town Hall, the Ven. Archdeacon Thomas, who presided, gave a very interesting *résumé* of what had been seen on the two previous excursions. Speaking of Ewenny Priory, he referred to the absence of charters and documents relating to it, and appealed to local antiquaries to do their best to make good the deficiency. He also dwelt upon the desirability of completing the restoration of Llantwit Church, the present state of the western portion of which did not reflect much credit on the inhabitants of so rich a district as the Vale of Glamorgan. He hoped that when the Association next visited Llantwit they would not have again to complain of the neglected state of the most remarkable building in South Wales.

After Mr. Stephen W. Williams and Mr. Seymour Lucas, A.R.A., had delivered some valuable comments on the style of the military and civil costume of the effigies seen during the excursions, the following papers were read:—"The Social Condition of Glamorganshire during the Tudor Period", by Mr. David Jones; "St. Fagan's Fight", by Mr. E. Laws. These will appear in the *Archæologia Cambrensis* in due course.

When Mr. Jones of Wallington had concluded his paper, Mr. Banks said that the paper was of much interest to him, as it afforded additional information on a subject to which he had recently turned his attention, the state of the Welsh border at an early period. In the reign of Edward IV the Commons petitioned the King to consider the oppression and wrongs to which his subjects of the land adjoining Wales were subject from the outrages of Welshmen, favoured by those who had the custody of castles there. Soon afterwards, with a view to the better government of Wales and its marches, the King sent his infant sons, Edward, Prince of Wales, and his brother, under the governorship of their uncle, Earl

Rivers, to Ludlow Castle, and appointed John Alcock, Bishop of Worcester, President of the Princes' Council, who exercised authority and made ordinances for the government of the Principality and the border country. The two Princes remained at Ludlow until the King's death, when they fell into the power of their uncle, Richard, Duke of Gloucester, and shortly afterwards were, according to general supposition, murdered in the Tower. Henry VII sent his son, Arthur, Prince of Wales, at an early age, to Ludlow Castle, and appointed William Smith, Bishop of Lincoln, Lord President of his Council. Other Presidents succeeded him. In the 26th of Henry VIII, Roland Lee, Bishop of Lichfield and Coventry, was appointed Lord President, and at once took a more active part than any of his predecessors. To him are due the series of remedial statutes relating to Wales, commencing the year after his appointment, which, among other matters, were directed to the prevention of the escape of murderers and robbers from England across the Severn into South Wales and the Forest of Dean; for redress of false imprisonment by the officers of the Lords Marchers; and for the prevention of any person wearing (except on a hue and cry) weapons, privy coats, or defensive armour. Thieves and felons were brought to justice from remote parts of Wales to Ludlow, or an adjoining English county. There is a letter of Lee addressed to Secretary Cromwell which gives a long list of the names of malefactors in Monmouthshire who were protected and aided in their felonious malpractices by Sir Walter Herbert. Hitherto the Council had discharged its functions solely by an exercise of the royal prerogative. A statute was passed, while Lee held office, which legalised the Council, and enabled it to transact such causes and matters as should be assigned to it by the ordinances, which the sovereign should from time to time make. More was done by Sir Henry Sydney, who was appointed Lord President by Queen Elizabeth in 1559, and held office for the long period of twenty-seven years. By his prudent administration in the removal of grievances and redress of wrongs, he succeeded in bringing Wales and the border into a state of tranquillity and order.

The meeting then terminated with the usual votes of thanks.

EXCURSION, FRIDAY, AUGUST 17TH.

The direction chosen for the excursion on this, the last day of the Cowbridge Meeting, which, like its predecessors, proved beautifully fine, was eastwards along the road to Llandaff. Passing Bonvilston, the village of St. Nicholas was reached, at a distance of six miles from Cowbridge. Here the carriages left the turnpike-road and turned southwards, in order to examine the celebrated cromlechs between St. Nicholas and St. Lythan's. At the head of the valley in which this remarkable group of prehistoric remains is to be found, a very perfect British camp, near Cottrell House, can be

clearly seen from the road on the north side. Just below the camp, near a pond on the opposite or south side of the road, is a large isolated block of limestone, partially embedded in the turf in a slanting position. There is nothing to indicate that it has been placed there artificially, but, from its proximity to the other rude stone monuments, it may have been in some way connected with them. The pool on the brink of which the stone stands is the source of the Dyffryn brook, and it has been suggested that the name Dyffryn-golwg, occurring lower down the valley, shows that the place was associated with some kind of primitive worship. The soundness of this etymology may, however, be doubted.

The Cromlechs between St. Nicholas and St. Lythan's.—The first cromlech inspected stands within a plantation three-quarters of a mile south of St. Nicholas. It is partially buried in what appears to be a large oval mound of earth and stones. The monument consists of a capstone of irregular shape, 22 ft. long by 15 ft. wide by 3 ft. thick, supported on four uprights forming three sides of a chamber 16 ft. long by 12 ft. wide by 5 ft. high. In the adjoining field are several other blocks of stone that may be parts of an avenue, or ruined cromlechs. The whole site would be well worth exploring thoroughly. The second cromlech visited lies in the middle of a field about a mile south of the one just described, and half a mile south-west of St. Lythan's. Although of smaller size than the other, its appearance is far more striking, owing to the fact that it stands by itself without any covering of earth. The capstone is 14 ft. long by 12 ft. wide and 1 ft. 6 in. thick, resting on three supports forming the sides of a chamber 7 ft. long by 4 to 6 ft. wide by 7 ft. high. This cromlech is a very good example of the class to which it belongs, and is not unlike Kit's Coty House, in Kent. The stone used in the construction of all the megalithic monuments between St. Nicholas and St. Lythan's is magnesian limestone of the district. Illustrations and descriptions of the cromlechs will be found in the *Archæologia Cambrensis* (vol. iii, Ser. 4, p. 81; vol. v, Ser. 4, p. 71; and vol. vi, Ser. 4, p. 173). By special request Mrs. Thomas Allen read out the account there given for the benefit of the members assembled on the spot.

A move was next made for St. Lythan's Church, the peculiarities of which were explained by Mr. J. P. Seddon.

St. Lythan's Church.—The plan consists of a nave, with west tower and south porch, and a chancel with south aisle. The tower has a saddle-back roof. The south aisle of the chancel is separated from the chancel by two flat segmental arches supported on massive round piers of very archaic appearance, perhaps Norman. The chancel and tower arches are pointed. The font is Norman, tub-shaped, and ornamented with a chevron pattern. It is 2 ft. 6 in. in diameter and 3 ft. high. There is a stoup inside the south door; also corbels and light for rood-loft. The communion-plate is Elizabethan, inscribed—"Saincte Leythan, 1577." The registers are on paper, dating from 1748.

The party next proceeded to St. Fagan's, three miles north of St. Lythan's, where luncheon was partaken of at the "Plymouth Arms", and the Church and Castle explored under the able guidance of the Rector, the Rev. W. David. Subsequently, some of the members walked a mile out of the village to inspect the site of the battle of St. Fagan's, being thus enabled to realise more vividly the brilliant picture of the fight given in Mr. Edward Laws' paper on the previous evening.

Walking through the village, Mr. David, who is the repository of much published and unpublished folk-lore, told of how the loyal St. Faganites turned out as one man to join the Royal forces, and how that after the fatal day there were no fewer than sixty-seven widows; thus it must have been that nearly the whole male population was killed. Climbing a bank, the party were shown the field, called to this day Cae Meirch, where the Parliamentary cavalry camped the night before the battle, just out of sight of the Welsh forces, gathered on an eminence now cut through by the new Barry line. With lively imaginations at work, the visitors filled in the details and fought the fight over again. At least one good suggestion came of the trip. One account said that the Welsh were the first to attack, while another held that the first to advance were the Parliamentarians, who sent out a forlorn hope. On viewing the ground the two accounts at once confirmed the one the other, for under the circumstances nothing would be more probable than that the Parliamentary soldiers should send out a forlorn hope to outflank the Welsh in their strong position, and that the latter, seeing the move, should make the correct counter-stroke and strike at once at the main body of their antagonists. In the walk some very peculiar things were told. In one case an old man, who had been in Mr. David's service, was told when a boy, by an old farmer, that when he first took his farm, about the middle of the last century, he found in a hollow tree a large number of rusty muskets and swords; while in another case—and this not more than thirty-five years ago—another farmer had come across stones marking where some of the more distinguished men fell. Goth as he was, he had them broken up as cumberers of the ground. At the farm of Stocklands, still existing, the victorious Parliamentarians are said to have gone, tired and hungry, and, finding a batch of bread baking, took it out of the ovens and ate up the whole of the household store. With such interesting anecdotes the way back to the "Plymouth Arms" was beguiled.

The Rev. W. David exhibited a beautiful looped and socketed bronze celt, found some years ago at St. Fagan's. This relic would surely be of more value if deposited in the Cardiff Museum than remaining in private hands, where it is only exhibited occasionally to friends of the owner.

St. Fagan's Church and Castle.—The church has been well restored by the late Mr. G. E. Street, who added the north aisle to the nave. The plan, before the restoration, in 1860, consisted of a nave, with

west tower and south porch, and a chancel. The earliest portions are the Norman arches in the north wall of the chancel and over the south doorway of the nave. The chancel and tower-arches are Pointed. The best work in the building is of the Decorated period, the sedilia and the tracery of the windows in the nave being particularly fine. The bracket for the rood-loft, with a head carved upon it, against the jamb of one of the windows in the south wall of the nave, is a curious feature. The old cradle-roof of the chancel still remains. The font is octagonal, with Perpendicular panelling. There is a stoup inside the south door of the nave, and an arched aumbry in the south wall of the chancel.

Since the church at St. Fagan's was built in the twelfth century, it is probable that the original castle was also Norman. The first occupant of the castle of whom any record has been kept was H. Ligon de Vele, lord of the place in 1320, and it remained in the possession of the same family down to 1475, when Alice, daughter of Robert Vele of Charfield, and sole heiress of St. Fagan's, married David Matthew of Radyr. Leland, writing of his visit in 1535, says: "The Castelle of S. Fagan standith on a little hille; and a part of it yet standith. It was, about 60 yeare ago, in the hands of one Davy Matthew; and then it came by heires General to divers co-partioners. Benyon of the Forest of Dene hath part of it."

The present manor-house was built on the site of the Castle by Dr. John Gibbon,¹ in the reign of Elizabeth. Sir William Herbert bought it from Morgan Gibbon, and subsequently sold it to Sir E. Lewis, in 1616. The estate passed into the possession of Archer, afterwards third Earl of Plymouth, on his marriage, in 1730, with Elizabeth, daughter of Sir Thomas Lewis,² the last male heir. Lord Windsor, the present owner, is fifth in descent from the third Earl of Plymouth.

The series of sharply-pointed gables repeated round two sides of the St. Fagan's manor-house give a quaint vandyked appearance to the sky-line of the roof as seen from below. All that now remains of the ancient feudal stronghold is a piece of straight wall with an embattled parapet in front of the house. The plan of the outer ward, of which this wall formed part of the defence, was shaped like the letter D, the straight portion measuring 182 ft., and the greatest diameter 156 ft. Passing through a gateway in the old wall, a trim-shaven lawn, with a cylindrical leaden tank raised on two steps in the centre, is seen facing the principal entrance to the mansion (see Mr. Banks' photograph, here reproduced). The tank is 20 ft. in circumference and 3 ft. 9 in. high, ornamented with a band, 6½ in. deep, richly embossed round the top, and a double tier of arcading below filled in with delicate scrolls of foliage. On one side also are the royal arms, with the date 1620, and on the other

¹ During the restoration of the church, in 1860, some of the tombstones of the Gibbons were found underneath the Castle pew.

² The inscription on the tenor bell in the church shows that the peal was the gift of Sir Thomas Lewis in 1737.

the arms of Sir Edward Lewis. This cistern is one of the largest and at the same time the most beautifully executed specimens of ornamental lead-casting to be found anywhere. It was probably made in the same way as the Norman leaden fonts, by using a series of wooden stamps, which were pressed into the surface of the mould to produce the pattern. Sometimes the same pattern was thus repeated over and over again, as on the tank at St. Fagan's, where it will be noticed that in one instance the stamp has been reversed accidentally. Much interesting information on this subject is given by Mr. J. L. André, in the *Journal of the British Archaeological Institute* (vol. xlv, p. 109); in the *Sussex Archaeological Collections* (vol. xxxii); in the *Surrey Archaeological Collections* (vol. ix); and by Dr. J. Charles Cox, in the *Journal of the Derbyshire Archaeological Society* (1887).

The interior of St. Fagan's house contains some rooms with old oak panelling and geometrically ornamented plaster ceilings. In the drawing-room is a handsomely carved oak chimney-piece, having upon it a shield bearing twenty-five quarterings of the arms of the family of Lewis of Van.

After seeing the interior under the guidance of the Rev. W. David, who, in the unavoidable absence of Lord Windsor, had been requested to act as cicerone, the party were conducted to the terrace behind the house. Here the precipitous nature of the ground must have formed a strong natural defence in days gone by. It is now laid out chiefly with a view to making a beautiful pleasure-ground, with steps and terraced walks leading down to a fish-pond below.

From St. Fagan's a drive of two miles and a half brought the party to Llandaff, where they were hospitably entertained at tea by the Dean. An inspection of the Cathedral and the early interlaced cross in the Bishop's garden brought the last day's excursion to a pleasant termination.

Llandaff Cathedral.—For a detailed description of the architecture of Llandaff Cathedral reference may be made to Mr. E. A. Freeman's work on the subject and to the *Archæologia Cambrensis* (vols. i, ii, and vol. ii, New Ser.).

Mr. J. P. Seddon, who has promised to write a paper dealing more fully with the Cathedral on a future occasion, delivered the following address:—

Llandaff Cathedral, although unable to take high rank as compared with English cathedrals, and not even the first among those of the Principality of Wales, is yet unique in many respects, extremely beautiful in parts, and very interesting throughout. Like its compeers in Wales, it is situated in a secluded and sheltered position, beneath one of the hills which border the valley of the Taff, instead of crowning any conspicuous height, as is more commonly the case. No doubt this was due to the unsettled condition of this part of the country when the monastery was founded, which compelled the monks to choose a spot like those that the

Cistercians favoured, rather than what would display to greater advantage a secular cathedral. Of the first British church built here by Lucius in the second century only tradition remains; as is the case also with the second, said to have been built by Dubritius in the sixth century. But of that which Urban (consecrated in 1108, and died in 1134) erected in the late Norman style several remarkable fragments have been preserved in the rich semicircular arch separating the presbytery from the lady-chapel, which, together with some smaller ones near it, are no doubt in their original position, but two fine Norman doorways that have been moved serve now as entrances to the nave-aisles. This church of Urban was extensive as well as highly decorated: its foundations, recently found, prove it to have been wider than the present church. The nave, with its extremely fine west front, is of Early English architecture of the beginning of the thirteenth century. This is flanked by towers of different dates and unequal height; the resulting picturesqueness is in character with the site and its surroundings. The north-east tower is the only portion of the church in the Perpendicular style, and was built by Jasper Tudor. The south-western tower, which replaces one of early character long since destroyed, is entirely modern, from the design of the late John Pritchard, Cathedral architect, and is crowned with a lofty spire. The nave has a nobly simple arcade dividing it from its aisles, which are of late Decorated, the windows having reversed ogee pointed and reticulated traceries. The presbytery is also Decorated, but the beautiful lady-chapel beyond it is of Early Geometrical Gothic, and the only vaulted portion. It will thus be seen that the structure is almost like a large parochial church in character, being devoid of transepts; though it would appear that Bishop Urban's church had transepts with arcaded openings of the proportions of windows, but unglazed, in walls of division separating them from the choir; and there are evidences of towers having been intended and prepared for, if not actually built, on their western sides.

At the commencement of this century the Cathedral had been allowed to fall into a lamentable state of decay, and in the beginning of the eighteenth century a Mr. Wood of Bath was consulted to remodel it. That architect erected within it a sort of Italian temple in plaster; and, though want of funds fortunately prevented the completion of his scheme to convert it into "an exceeding fine church", and to take down its two steeples, and then "to finish with a rustic porch", yet, according to a cotemporary account, he thus covered over about two-thirds of the church, "in more regular and exact proportion than the old church, which is agreed on all hands to be too long for its breadth." The demolition of this Palladian temple, and the restoration of the Gothic architecture of the Cathedral, which has been conducted with the most scrupulous conservative care, has been the work of this present century, and now, both externally and internally, it is nearly complete, although there is still room and need for decorative treatment within. It contains,

however, one artistic gem which has perhaps no rival in any other cathedral in the British Isles, namely, the paintings by Rossetti in the reredos; forming, as it were, a triptych, with the subject of the Nativity in the central panel, and of David as shepherd and as king in the side ones. There are also several painted windows of great excellence by Messrs. Morris and Marshall, from cartoons by Burne Jones and other artists of eminence.

EVENING MEETING, FRIDAY, AUGUST 17TH.

The concluding evening meeting, of members only, was held in the Town Hall at 8.30 p.m., for the transaction of the business of the Association. The chair having been taken by the Ven. Archdeacon Thomas, one of the Editors was called upon to read the annual report.

ANNUAL REPORT OF THE ASSOCIATION FOR 1888.

"The present meeting at Cowbridge is the fifth which has been held in the county of Glamorgan, the previous ones having taken place at Cardiff in 1849; Bridgend, 1869; Swansea, 1861, 1886. The selection of Cowbridge has been fully justified by the large number of objects of archaeological interest set down on the programme of the excursions, and the valuable papers on the history of the district to be read at the evening meetings. The Association is also to be congratulated in having secured so able a President as the Lord Bishop of the diocese of Llandaff. Now that most of the larger towns in Wales have been visited during the annual meetings, it seems worthy of consideration whether in future it may not be desirable to take some of the smaller places, from which less known but equally interesting neighbourhoods could be explored. It is a matter of regret that a local museum was not formed at Cowbridge this year, but it had to be abandoned owing to unforeseen difficulties encountered by the Local Secretary.

"The condition of the Association as regards the number of members is satisfactory; but, at the same time, if the Local Secretaries and others would use their influence to induce new members to join our body, its strength might be considerably increased. At present there are 286 Associates altogether, including the following new members whose names have been submitted for election.

" ENGLISH AND FOREIGN.

"Howell, Tudor, Esq., 6, King's Bench Walk, Temple, E.C.
Jones, David, Esq., Norton Lodge, Wallington, Surrey.
Rennes, Bibliothèque de, France.

" NORTH WALES.

"Davies, D. G., Esq., B.A., 200, High Street, Bangor.
Griffith, J. E., Esq., Vronheulog Villa, Upper Bangor.
Keene, A. J., Esq., Mold.

" SOUTH WALES.

"Lisburne, the Countess of, Crosswood, Aberystwith.
Drummond, Sir James, Bart., Edwinstford, Llandeilo-fawr.
Jones, Rev. Ebenezer, Golden Grove Vicarage, Carmarthen
James, Ivor, Esq., Registrar, University College, Cardiff.
Jones, Oliver Henry, Esq., Fonmon Castle, Cardiff.
Kirkhouse, Rev. H., Cyfarthfa Vicarage, Merthyr Tydfil.
Morgan, Rev. Lewis, M.A., St. Hilary Rectory, Cowbridge.
De Winton, W. S., Esq., Haroldston, Haverfordwest.
Ricketts, Rev. John, M.A., Llangynullo Vicarage, Knighton.
Newell, Rev. E. J., Collegiate School, Newport.

" THE MARCHES.

"Kempson, F. R., Esq., F.R.I.B.A., Bromyard, Hereford.

"We have to regret the loss of the following members, deceased:—

"C. Octavius S. Morgan, Esq., F.R.S., F.S.A.
The Right. Hon. A. J. B. Beresford Hope, Esq., M.P.,
M.A., F.S.A.
Matthew Holbeche Bloxham, Esq., F.S.A.
Howel Gwyn, Esq., M.A.
Major A. E. L. Lawson Lowe

"The changes proposed amongst the officers of the Association are as follows:—

" COMMITTEE.

"It is proposed to re-elect the retiring members of the Committee, namely:—

"H. W. Lloyd, Esq., M.A.
Morris C. Jones, Esq., F.S.A.
Rev. Canon M. H. Lee, M.A.

" TRUSTEES.

"It is proposed to elect Stanley Leighton, Esq., M.A., M.P., F.S.A., a Trustee, in place of C. Octavius Morgan, Esq., F.R.S., F.S.A., deceased.

" CORRESPONDING SECRETARIES.

"It is proposed to elect W. F. Wakeman, Esq., Corresponding Secretary for Ireland, in place of the Rev. James Graves, M.A., deceased.

" LOCAL SECRETARIES.

"It is proposed to elect as Local Secretaries: for *Anglesey*, Thomas Prichard, Esq., in place of the Rev. R. Williams Mason; for *Merionethshire*, the Rev. J. E. Davies, in place of Owen Richards, Esq.; for *Carmarthenshire*, Alwyn Evans, Esq., in place of the

Rev. Benjamin Williams; for *Glamorganshire*, Thomas Powel, Esq., in place of J. T. D. Llewelyn, Esq.; for *Pembrokeshire*, W. S. de Winton, Esq., in place of the Rev. J. Tombs, B.A.; for *Monmouthshire*, the Rev. Benjamin Williams, in place of T. D. Roberts, Esq.; and for the *Marches*, the Rev. C. H. Drinkwater, in place of R. Kyrke Penson, Esq., F.S.A.

"The literary works by members of the Cambrian Archæological Association published during the past year include Mr. Edward Laws' *History of Little England beyond Wales*; the Ven. Archdeacon Thomas's *History of the Diocese of St. Asaph* (S.P.C.K.); Professor J. Rhys' *Hibbert Lectures*; and Mr. J. A. Corbett's new edition of Rice Merrick's *Booke of Glamorganshire Antiquities*. Messrs. Blades, East, and Blades have also issued to subscribers the facsimile of the MS. of the *Duke of Beaufort's Progress through Wales in 1684*, published under the direction of the Cambrian Archæological Association.

"The excavations at Strata Florida Abbey, begun two years ago, have lately been carried on most energetically by Mr. Stephen Williams, as will be seen from his fully illustrated report appearing in the number of the *Arch. Camb.* for January 1889. The ground-plan of the Abbey has been entirely made out, but a good deal remains yet to be done in clearing the site of the conventual buildings. The whole of the excavations have been fenced in, and further precautions are to be taken to protect the ruins from damage.

"It is the pleasant duty of the Editors to thank those members who have contributed papers and other matter to the Journal of the Association, thus enabling it to compare favourably with the publications of other societies. The Editors, however, are obliged to complain of the very small assistance they receive from the Local Secretaries. With two or three exceptions, the Local Secretaries never communicate with the Editors from one year's end to another. An endeavour was made within the last few months to improve this state of things, by forwarding the following letter to each of the Local Secretaries:—

"Dear Sir,—It is very desirable that the organisation of the Association should be made as efficient as possible, and since this depends to a large extent on the exertions of the Local Secretaries, we shall feel greatly obliged if you will kindly endeavour to assist the Editors, (1) by reporting any new discoveries in your neighbourhood; (2) by sending cuttings from local newspapers containing matter relating to Welsh history or archæology; (3) by pointing out objects of interest which have not yet been noticed in the Journal, and getting photographs, drawings, and descriptions of them; (4) by calling attention to any acts of vandalism you may have heard of; (5) by giving information about proposed or completed restorations of churches; (6) by putting persons willing to help in the work of the Association (whether members or not) in communi-

cation with the Editors; and (7) by encouraging new members to join our body.—We remain, dear Sir, yours faithfully,

'THE EDITORS.'

"The Index of the *Arch. Camb.* is ready for the press, and will be published shortly.

"It would be impossible to conclude this report without saying how great a loss the Association has sustained by the death of its late Vice-President, Mr. Matthew Hölbeche Bloxam. He will be deeply regretted by those who were fortunate enough to have been numbered amongst his intimate friends; and those who made his acquaintance at our annual meetings will ever cherish pleasant remembrances of his genial companionship; nor will they forget the benefit received from the vast stores of knowledge he was so ready to impart to others."

The adoption of the Report was moved, seconded, and carried.

Afterwards the following motions were proposed, seconded, and carried:—

(1) That the next annual meeting of the Association be held in Brittany.

(2) That the wood-blocks belonging to the Association be removed from Messrs. Whiting and Co.'s premises in Sardinia Street to Mr. Clark's office in Lincoln's Inn Fields, and insured for the sum of £100.

(3) That *Proceedings* be exchanged with the Bristol and Gloucestershire Archæological Society.

(4) That the subscriptions of members living in South Wales be received by Mr. R. W. Banks instead of by Mr. E. Laws.

(5) That the receipt of *Proceedings* of Archæological Societies received in exchange be duly acknowledged.

(6) That £10 be subscribed by the Association towards the Strata Florida Excavation Fund, subject to the favourable report of Mr. E. Laws.

(7) That a proposal made by Mr. Egerton Phillimore be allowed to stand over.

(8) That, in reply to the following letter from the Society of Antiquaries, Mr. Edward Owen and Mr. J. Romilly Allen be appointed delegates to the proposed Congress for the better organisation of Archæological Research.

"Society of Antiquaries of London,
"Burlington House, Piccadilly, London, W.

"In accordance with a request conveyed in a memorial from a large number of representative members of various Archæological Societies throughout England and Wales, the President and Council of the Society of Antiquaries of London have resolved to summon a congress of delegates of the leading local societies, to be held in

their apartments at Burlington House on a day in the ensuing autumn hereafter to be fixed.

"Each Society will be requested to send not more than two delegates to the Congress, the object of which will be to consider in what manner to promote—(1) The better organisation of antiquarian research; and (2) the preservation of ancient monuments and records. It is thought that the most effective means of obtaining these results will be—(a) To establish a group of local societies which shall be in correspondence with the Society of Antiquaries of London; (b) to request these societies to report from time to time to the Society of Antiquaries on all important discoveries within their districts, in doing which the Local Secretaries of the Society of Antiquaries will be ready and willing to afford assistance; (c) to encourage the formation of lists of ancient objects of different kinds in each local society's district, and to assist in devising the best system on which such lists can be drawn up; (d) to consider in what manner a general archæological survey of England and Wales by counties, on the plan approved of by the Society of Antiquaries and begun in Kent, may be completed; (e) to define the limits within which each local society should work; (f) to promote the foundation of new local societies where none exist, and the improvement and consolidation of existing societies where advisable.

"I am desired to invite an expression of opinion from your Society on the proposals above recited, and to ask them to nominate not more than two delegates, who would attend the proposed Congress should your Society be willing to co-operate in the undertaking.

"On the receipt of the answers from the various societies, no time will be lost in fixing a day for the Congress.

"By order of the Council,

"HAROLD ARTHUR DILLON, *Secretary.*"

(9) That a new list of members be prepared and issued annually.

The proceedings then terminated.

EXCURSION TO STRATA FLORIDA, MONDAY, AUGUST 20TH.

After the meeting of the Cambrian Archæological Association at Cowbridge, a party of members and their friends was formed to visit Strata Florida Abbey, Cardiganshire, the ruins of which have been excavated during the past year, under the superintendence of Mr. Stephen Williams. The members of the Cambrian Archæological Association, together with a large number of the most influential persons in the neighbourhood, assembled at the ruins. The day unfortunately proving wet, the formal proceedings were held

in the farm-house adjoining. Mr. Edward Laws, who occupied the chair, was the first speaker. In order to give some idea of the amount of work already done, he stated that about £160 had been spent in the removal of 3,500 cubic yards of material. After complimenting Mr. S. Williams on the excellent results that had been attained in laying bare the ground-plan of the Abbey Church, he suggested that further precautions should be taken to preserve the remains from spoliation and decay by fencing in the buildings and roofing over the encaustic tile pavements. He concluded by handing over the care of the ruins from the Cambrian Archæological Association to the local committee, under whose charge they were now placed. Mr. Stephen Williams described the progress of the excavations with the aid of a large plan and numerous careful drawings of the various details recovered. The whole of the lower portions of the piers of the nave were now laid bare, showing that they were rectangular for about 6 ft. above the floor-line and surmounted by round, clustered pillars. The carved capitals and arch-mouldings had also been found with the setting-out lines still visible upon them. On the east side of the north and south transepts were six chapels, three on each side of the choir, containing altars, and having groined roofs with carved bosses. The encaustic pavements in these chapels were exceedingly fine and in splendid condition, being of thirteenth century date, arranged so as to form coloured patterns of great beauty. The centre of the nave was still untouched, and no attempt had yet been made to trace the plan of the surrounding conventual buildings. Mr. Stephen Williams hoped that funds would soon be forthcoming to bring the work to a successful conclusion. Mr. J. P. Seddon compared the architectural details found at Strata Florida with those of the Cathedrals of Llandaff and St. David's. He pointed out that the sculpture at Strata Florida was of a remarkable character, as exhibiting transitional forms between the stiff foliage of Norman times and the graceful flowing lines of the capitals at York and Lincoln. The interlacing of the leaves and stems indicated a survival of Celtic feeling. He hoped that a strenuous effort would be made to prevent the tile-pavements from being injured, as they were quite unique. Tourists had already begun to show the cloven hoof by carrying away tiles in their pockets, thus damaging the general effect of the coloured patterns irretrievably. If energetic means were not taken to put a stop to these depredations, there would soon be nothing left of a specimen of decorative flooring the like of which was not to be seen anywhere else, in either England or Wales. Mr. Romilly Allen called attention to the exceedingly curious series of graves on the outside of the east wall of the south transept. Owing to the *débris* of the walls having fallen over them they had been preserved intact for several centuries, thus showing us what was the appearance of the sepulchral monuments in a churchyard of the twelfth century. The graves were placed in a long row parallel to the east wall of the south transept, a few feet

from it. Each grave pointed east and west. A long slab of slate with a plain cross was laid flat on the grave; at the foot was a small upright stone; and at the head an upright cross of Bath stone, with interlaced work carved on the face. The dressing of the headstones and their general character showed that they were probably of the twelfth century, but the interlaced work was evidently a survival of a previous style. Early headstones had been found at Cambridge, Hythe in Kent, and elsewhere; but this was the only instance where the whole of each monument remained *in situ* exactly as it was six hundred years ago. Mr. Willis-Bund spoke on behalf of the Society of Antiquaries, expressing his approval of the way in which the work had been carried on. He read a letter from Mr. St. John Hope, who had had more experience, perhaps, than any one else in excavating Cistercian abbeys, insisting upon the necessity of completing the work at Strata Florida, in order to throw light on the conventual arrangements of similar buildings elsewhere.

The proceedings terminated by speeches from Mr. Morris Davies and the Mayor of Aberystwith, representing the local committee, who accepted the responsibility of carrying on the excavations and fencing in the ruins.

The following copies of the inscriptions in the Stradling Chapel at St. Donat's have been supplied by the Rev. Rees Williams:—

"The undername Harry Stradlinge, Knight, went on Pilgrimage to Jerusalem, and received the order of the Sepylcher ther as his Father Stradlinge, Knight, the 5. of that name, Granfather William Stradlinge, Knight, the 2nd of that name, did, and dyed on Ile of Cypres on his coming, the last of Aug. in the 10 yere King Edward the 4th, and is buried ther in the Citie of Famagusta. This Sir Harry sailing from his house in Somerseshire to his house in Wales, was taken prisoner by a Brytaine Pirate, Colyndolphyn, whose redemption charges named him in 2200 marks. For Paiment thereof he was driven to sell the Castle and Manor of Basselek and Sutton in Monmouthshire, and two Manors in Oxfordshire.

"He died before he was 26 years of age. Anno aeta sve 24."

"Here lyeth Thomas Stradlinge, Esquier, sonne to Harry Stradlinge, Knight, and Elizabeth his wife, the daughter of William Thomas of Raglan in the County of Monmouth, Knight, who dyed at Cardiff, in the Monastery of Preaching Fryers, the 8. day of September in the yere of Our Lord 1480, whose bones, after the dissolution of the said Monastery, Thomas Stradlinge, Knight, his nephewe, caused to be taken up and carried to Saint Donatts, and buried in the chauncell of the church ther, by his Sonne, the 4 day of June in the yere of Our Lord 1537; and afterwards Edward Stradlinge, Knight, his nephewe, Sonne of the 5 of that name, translated the said bones out of the chauncell into the chappell ther in the yere of our Lord 1573, after whose death his wife married with Sir Rees ap Thomas, Knight of the Garter, and dyed at Picton in the county the 5 day of February in the yere of Our Lord 1533, and was buryed at Carmarthen in the Church of the Monastery of Preaching Fryers, with the said Sir Rees ap Thomas, her husband."

2.

"Here lyeth Edward Stradlinge, Knight, the 4th of that name, Sonne to Thomas Stradlinge, Esquier, and Jennet his wife, the daughter of Thomas

Mathewe of Rader in the County of Glamorgan, Esquier, who died in the Castell of St. Donatts the 8. day of May in the yere of Our Lord 1533, and was buried in the Chauncell of the Church ther, whos bones were after translated by his nephew, Edward Stradlinge, Knight, the 5 of that name, into the Chappell ther in the yere of Our Lord 1573. Also here lyeth Elisabeth his wife, daughter to Thomas Arundell of Fanheyron in the county of Cornwall, Knight, who died in childbed at Merthermawre the 20th day of Feb. in the yere of Our Lord 1513, and was buried ther, whos bones Thomas Stradlinge, Knight, her Sonne, caused to be taken up and caryed to St. Donatts, and buried in the Chauncell of the Church ther, with her husband, the 8 day of Maye in the yere of Our Lord 1576 and 1536, and were afterwards by Edward Stradlinge, Knight, the 5th of that name, her nephew, translated out of the Chauncell into the Chappell ther in the yere of Our Lord 1573."

3.

"An' aetatis sve 67 incipiente. Virtues sole Praise Consisteth in doing. Anno aetatis sve 90.

"These Pictures do represent Sir Edward Stradlinge, Knight, the 5th of that name, Sonne to Sir Thomas Stradlinge, Knight, and Katerine his wife, to Sir Thomas Gamage of Coyty, Knight, and the Lady Agnes Stradlinge his wife, daughter to Sir Edward Gage of Sussex, Knight, and Elisabeth his wife, daughter to John Parker of Wellington in the County of Sussex, Esquier; which said Edward nowe in his life time hath set forth thes monuments of thes his Ancestors Deceased, and by Gods grace meaneth both he and his wife, after their decease, to keep them Bodel.... mpany in this sealf same place.

"Anno Domini 1590."

CAMBRIAN ARCHÆOLOGICAL ASSOCIATION.

COWBRIDGE MEETING, AUGUST 13-17, 1888.

RECEIPTS.

SUBSCRIBERS TO LOCAL FUND.		£	s.	d.
The Right Hon. the Earl of Dunraven	.	5	0	0
The Right Hon. Lord Aberdare	.	5	0	0
Colonel Turbevill	.	5	0	0
W. R. B. Bassett, Esq.	.	2	2	0
G. M. Traherne, Esq.	.	2	0	0
His Worship the Mayor of Cowbridge (Thos. Rees, Esq.)	.	1	1	0
Rev. F. F. Edmondes	.	1	1	0
T. M. Franklen, Esq.	.	1	1	0
Miss Franklen	.	1	1	0
O. H. Jones, Esq.	.	1	1	0
The Right Hon. Lord Windsor	.	1	0	0
The Very Rev. the Dean of Llandaff	.	1	0	0
W. H. Evans, Esq.	.	1	0	0
G. W. Nicholl, Esq.	.	1	0	0
Rev. E. Jenkins	.	0	10	0
Miss Evans	.	0	10	0

Carried forward £29 7 0