



# Rich and Poor in Victorian Times

Windsor Castle.

The Queen sends  
W. B. <sup>W. B.</sup> <sup>W. B.</sup> <sup>W. B.</sup>  
Dud of gift  
The Queen  
Queen  
Queen

June 26. 1869 -

| Civil Parish  |  | Municipal Borough                      |                                       | Municipal Ward                  |                            | Urban Sanitary District   |                      | Town or Villages or Hamlets |          | Rural Sanitary Districts |                       | Parliamentary Borough or Division |   | Ecclesiastical Parish or District |    |    |
|---|--|--|---------------------------------------|---------------------------------|----------------------------|---------------------------|----------------------|-----------------------------|----------|--------------------------|-----------------------|-----------------------------------|---|-----------------------------------|----|----|
| of <u>St John</u>                                       |  | of <u>Central</u>                      |                                       | of <u>Central</u>               |                            | of <u>Cardiff</u>         |                      | of                          |          | of                       |                       | of <u>Cardiff</u>                 |   | of <u>St John</u>                 |    |    |
| Col. 1  | 2  | 3                                      | 4                                     | 5                               | 6                          | 7                         | 8                    | 9                           | 10       | 11                       | 12                    | 13                                | 14  | 15                                | 16 | 17 |
| No. of Schedule   | ROAD, STREET, &c. and No. or NAME of HOUSE | HOUSES Inhabited (U.) or Building (B.) | Number of rooms (U.) or Building (B.) | NAME and Surname of each Person | RELATION to Head of Family | CON-DITION as to Marriage | AGE last Birthday of | PROFESSION or OCCUPATION    | Employer | Employed                 | Whether Blind or Deaf | WHERE BORN                        | IF (1) Deaf-and-Dumb (2) Blind (3) Lunatic, Imbecile or Idiot | Language Spoken                   |    |    |
| 54  | 13 Woodville West                          | 1                                      |                                       | Athel Gwen Davies               | Wife                       | Married                   | 14                   |                             |          |                          |                       | Cardiff Glam                      |   | English                           |    |    |
|   |  |  |                                       | Ed Marion                       | do                         |                           | 12                   |                             |          |                          |                       | do                                |   | do                                |    |    |
|   |  |  |                                       | Wynne Davis                     | son                        |                           | 11                   |                             |          |                          |                       | do                                |   | do                                |    |    |
|   |  |  |                                       | Flor Mary Batchelor             | Wife                       |                           | 11                   | Willa Mauff                 |          | X                        |                       | Gloucester Giffon                 |   | do                                |    |    |
|   |  |  |                                       | Mary Elizabeth Price            | Servant                    |                           | 10                   | Ed Mauff                    |          | X                        |                       | Glam Cardiff                      |   | do                                |    |    |
| 55  | Cardiff Castle                             |  |                                       | John Patrick Crickton Stuart    | Head                       | Married                   | 42                   | living on his own means     |          | X                        |                       | Scotland                          |   | English                           |    |    |
|   |  |  |                                       | Marquis of Bute                 | Head                       | Married                   | 42                   | living on his own means     |          | X                        |                       | Scotland                          |   | English                           |    |    |
|   |  |  |                                       | Elizabeth Mary Ann              | Wife                       |                           | 37                   |                             |          |                          |                       | do not know where born            |   | do                                |    |    |
|   |  |  |                                       | John Crickton Stuart            | Son                        | Single                    | 14                   |                             |          |                          |                       | Midlesex Chiswick                 |   | Both                              |    |    |
|   |  |  |                                       | Minna Edw Crickton              | do                         |                           | 13                   |                             |          |                          |                       | Scotland                          |   | do                                |    |    |
|   |  |  |                                       | Colman Edw                      | do                         |                           | 12                   |                             |          |                          |                       | Midlesex Chiswick                 |   | do                                |    |    |
|   |  |  |                                       | Margaret                        | do                         |                           | 11                   |                             |          |                          |                       | Scotland                          |   | English                           |    |    |
|   |  |  |                                       | both Mary Roberts               | Governess                  |                           | 40                   | St. Lawrence School         |          | X                        |                       | Gloucester County Town            |   | Both                              |    |    |
|   |  |  |                                       | William Crisp                   | Servant                    |                           | 41                   | Butler                      |          | X                        |                       | Worcester Akeley                  |   | English                           |    |    |
|   |  |  |                                       | Richd Garrett                   | do                         |                           | 40                   | Walter                      |          | X                        |                       | London                            |   | do                                |    |    |
|   |  |  |                                       | Leon Robert                     | do                         |                           | 40                   | Walter                      |          | X                        |                       | France                            |   | English                           |    |    |
|   |  |  |                                       | Alfred Poulton                  | do                         | Single                    | 35                   | Footman                     |          | X                        |                       | Essex Withersfield                |   | English                           |    |    |
|   |  |  |                                       | John Booth                      | do                         |                           | 18                   | House Room Boy              |          | X                        |                       | do Aldershot                      |   | do                                |    |    |
|   |  |  |                                       | John Black                      | do                         |                           | 17                   | Footman                     |          | X                        |                       | Scotland                          |   | do                                |    |    |
|   |  |  |                                       | W. Riv. Howley                  | do                         |                           | 16                   | Woker of the Hall           |          | X                        |                       | Hampshire Isl of Wight            |   | do                                |    |    |
|   |  |  |                                       | Alfred Phillips                 | do                         | Married                   | 31                   | Woker Butler                |          | X                        |                       | Gloucestershire Westbury          |   | do                                |    |    |
|   |  |  |                                       | Mary Tomber                     | do                         | Single                    | 30                   | House Keeper                |          | X                        |                       | Gloucestershire Lower Beeding     |   | do                                |    |    |
|   |  |  |                                       | Marianne Hainyban               | do                         |                           | 29                   | Lady's Maid                 |          | X                        |                       | Essex Brit Subj                   |   | do                                |    |    |
|   |  |  |                                       | Kath Kilgour Ramsey             | do                         |                           | 29                   | Nurse                       |          | X                        |                       | Scotland                          |   | do                                |    |    |
|   |  |  |                                       | Agnes Surley                    | do                         |                           | 28                   | Cell Room Maid              |          | X                        |                       | do                                |   | do                                |    |    |
|   |  |  |                                       | Rebecca Scoble                  | do                         |                           | 27                   | House Maid                  |          | X                        |                       | do                                |   | do                                |    |    |
|   |  |  |                                       | Minnie Braum                    | do                         |                           | 26                   | do                          |          | X                        |                       | do                                |   | do                                |    |    |
|   |  |  |                                       | Margt Stewart                   | do                         |                           | 25                   | Kitchen Maid                |          | X                        |                       | do                                |   | do                                |    |    |
| Total of Houses and Tenements with less than Five Rooms |  | 2                                      |                                       | Total of Males and Females...   |                            |                           |                      | 15                          | 14       |                          |                       |                                   |   |                                   |    |    |

Civil Parish of St John of Cardiff of Central of Cardiff of Cardiff of Cardiff of Cardiff of Cardiff of St John

| Cols 1 | 2              | HOUSES          |   |           | 7                 | 8        | 9                                 |   | 11                    | 12  | 13 | 14 | 15                 | 16 | 17      |
|--------|----------------|-----------------|---|-----------|-------------------|----------|-----------------------------------|---|-----------------------|-----|----|----|--------------------|----|---------|
|        |                | No. of Schedule | ROAD, STREET, &c., and No. or NAME of HOUSE | Inhabited |                   |          | Uninhabited (U.) or Building (B.) | Members of House occupied if less than five |                       |     |    |    |                    |    |         |
| 55     | Cardiff Castle | 1               |   |           | Lucienne Bennett  | Servant  | Single                            | 57  | Nursery Maid          | Dom | X  |    | France             |    |         |
|        |                |                 |   |           | James Mitchell    | "        | "                                 | 18  | House Maid            |     | X  |    | Ireland            |    | English |
|        |                |                 |   |           | Fanny Carter      | "        | "                                 | 23  | Kitchen Maid          |     | X  |    | Widdowes Cambridge |    | do      |
|        |                |                 |   |           | Rebecca MacKain   | "        | "                                 | 27  | Kitchen Maids         |     | X  |    | Scotland           |    | do      |
| 56     | "              | 1               |   |           | Geo Marsh         | Head Man | Mar                               | 45  | Hotel Keeper          |     | X  |    | Wendington Ford    |    | do      |
|        |                |                 |   |           | Haral "           | Wife     | "                                 | 50  | Cardiff Castle        |     |    |    | Cardiff Glam       |    | do      |
|        |                |                 |   |           | Annie Marie "     | Daughter | Single                            | 18  |                       |     |    |    | do do              |    | do      |
|        |                |                 |   |           | Oliver Jane "     | do       | "                                 | 15  |                       |     |    |    | do do              |    | do      |
|        |                |                 |   |           | Francis Lily "    | do       | "                                 | 8   |                       |     |    |    | do do              |    | do      |
| 57     | "              | 1               |   |           | William Mauders   | Head Man | Mar                               | 44  | Lodge Keeper          |     | X  |    | Wales              |    | do      |
|        |                |                 |   |           | Isabella "        | Wife     | "                                 | 37  |                       |     |    |    | Scotland           |    | do      |
|        |                |                 |   |           | Mary "            | Daughter | "                                 | 14  |                       |     |    |    | Cardiff            |    | do      |
|        |                |                 |   |           | Norman Bennett "  | Son      | "                                 | 2   |                       |     |    |    | do                 |    | do      |
|        |                |                 |   |           | William Bernard " | "        | "                                 | 1   |                       |     |    |    | do                 |    | do      |
| 58     | "              | 1               |   |           | Frank Tibbitts    | Head Man | Mar                               | 53  | Lodge Keeper          |     | X  |    | Walesbury Mills    |    | do      |
|        |                |                 |   |           | Leah "            | Wife     | "                                 | 42  |                       |     |    |    | do do              |    | do      |
|        |                |                 |   |           | Beat Fanny "      | Daughter | "                                 | 16  | Dressmaker apprentice |     | X  |    | Cardiff Wales      |    | do      |
|        |                |                 |   |           | Jessie Bond "     | do       | "                                 | 10  |                       |     |    |    | do do              |    | do      |
|        |                |                 |   |           | Clara Mings "     | do       | "                                 | 8   |                       |     |    |    | do do              |    | do      |
|        |                |                 |   |           | Joy Isabel "      | do       | "                                 | 5   |                       |     |    |    | do do              |    | do      |
| 59     | "              | 1               |   |           | Robt Tompston     | Head Man | Mar                               | 38  | Worm Bailiff          |     | X  |    | Scotland           |    | do      |
|        |                |                 |   |           | Mary "            | Wife     | "                                 | 35  |                       |     | X  |    | do                 |    | do      |
|        |                |                 |   |           | John "            | Son      | "                                 | 12  |                       |     |    |    | do                 |    | do      |
|        |                |                 |   |           | Andrew "          | do       | "                                 | 9   |                       |     |    |    | Glamorgan Wales    |    | do      |
|        |                |                 |   |           | Bertie "          | do       | "                                 | 5   |                       |     |    |    | do do              |    | do      |
|        |                |                 |   |           | Jeannie "         | Daughter | "                                 | 4   |                       |     |    |    | do do              |    | do      |
|        |                |                 |   |           | Mary Hughes       | Servant  | Single                            | 22  | Domestic Servant      |     | X  |    | Wales do           |    | Both    |
| 60     | "              | 1               |   |           | H Evan Owen       | Head Man | Mar                               | 37  | Handyman              |     | X  |    | Wales do           |    | do      |
|        |                |                 |   |           | Haral "           | Wife     | "                                 | 30  |                       |     |    |    | Wales do           |    | do      |
|        |                |                 |   |           | David             | Son      | "                                 | 15  | Carpenter             |     | X  |    | Cardiff do         |    | do      |

51. 11

Total of Males and Females... 11/19

Total of Houses and of Tenements with less than Five Rooms ...

Civil Parish of St. John Municipal Borough of Cardiff Municipal Ward of Central Urban Sanitary District of Cardiff Town or Village or Hamlet of \_\_\_\_\_ Rural Sanitary District of \_\_\_\_\_ Parliamentary Borough or Division of Cardiff Ecclesiastical Parish or District of St. John

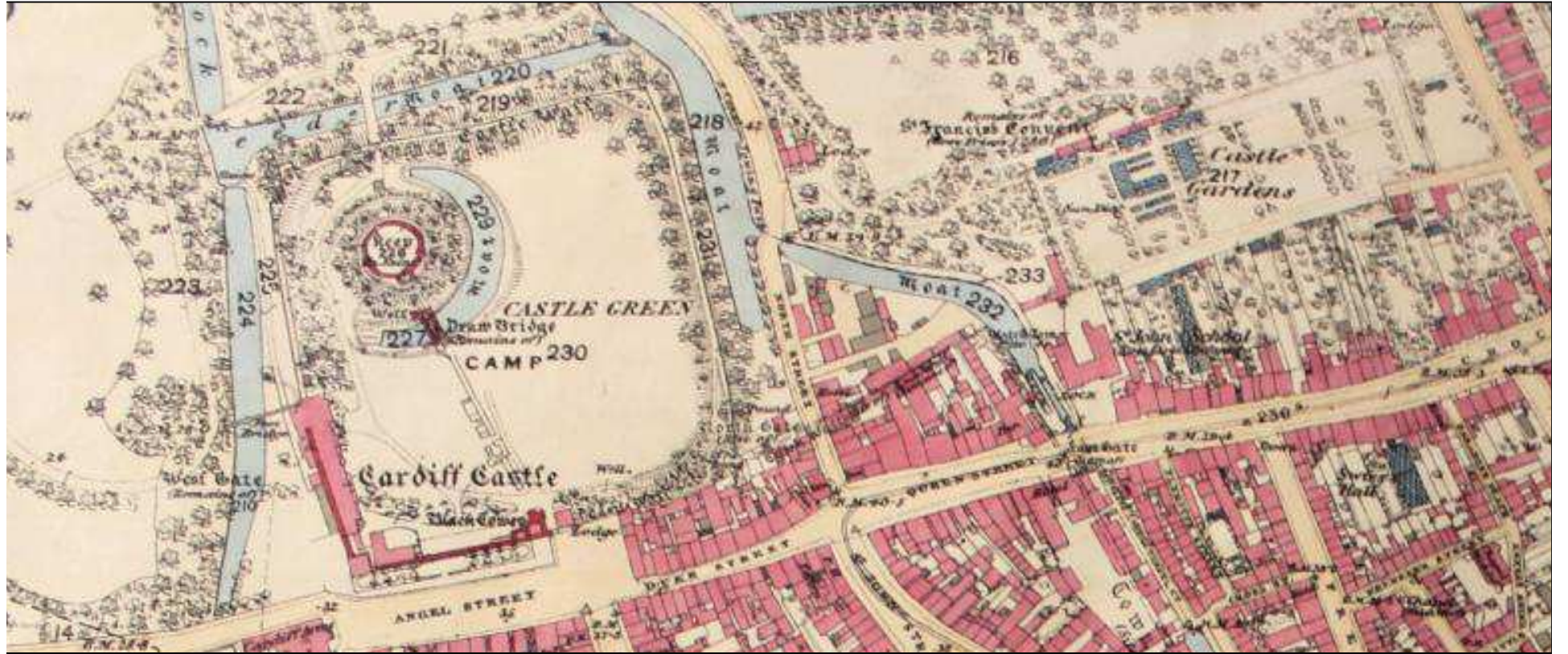
| Cols 1<br>No. of<br>Schedule | 2<br>ROAD, STREET, &c., and<br>No. or NAME of HOUSE | 3<br>HOUSES         |  |  | 6<br>NAME and Surname of<br>each Person | 7<br>RELATION<br>to<br>Head of Family | 8<br>CON-<br>DITION<br>as to<br>Marriage | 9 10<br>AGE last<br>Birthday<br>of |               | 11<br>PROFESSION or OCCUPATION | 12<br>Employer | 13<br>Employed | 14<br>Number<br>of<br>Children<br>under<br>16 years of<br>age | 15<br>WHERE BORN           | 16<br>If<br>(1) Deaf-and-Dumb<br>(2) Blind<br>(3) Lunatic, Imbecile<br>or Idiot | 17<br>Language<br>Spoken |
|------------------------------|---|---------------------|--|--|---|---------------------------------------|--|------------------------------------|---------------|--------------------------------|----------------|----------------|---|----------------------------|---|--------------------------|
|                              |   | 4<br>In-<br>habited | 5<br>Unin-<br>habited<br>(U.) or<br>Building<br>(B.) | 6<br>Number<br>of<br>rooms<br>if<br>less<br>than<br>five |   |                                       |  | 9<br>Males                         | 10<br>Females |                                |                |                |   |                            |   |                          |
| 60                           | <u>Cardiff Castle</u>                               |                     |  |  | <u>James Owen</u>                       | <u>son</u>                            |  | <del>11</del>                      | <del>11</del> | <u>Grand Boy</u>               |                | X              |   | <u>Truro</u>               |   | <u>Both</u>              |
|                              |   |                     |  |  | <u>Jane Jane</u>                        | <u>Daughter</u>                       |  | <del>11</del>                      | <del>11</del> |                                |                |                |   | <u>do</u>                  |   | <u>do</u>                |
|                              |   |                     |  |  | <u>Arthur Rees</u>                      | <u>son</u>                            |  | <del>7</del>                       | <del>7</del>  |                                |                |                |   | <u>do</u>                  |   | <u>do</u>                |
|                              |   |                     |  |  | <u>Griff Evans</u>                      | <u>son</u>                            |  | <del>11</del>                      | <del>11</del> |                                |                |                |   | <u>do</u>                  |   | <u>do</u>                |
|                              |   |                     |  |  | <u>Oliver Mary</u>                      | <u>Daughter</u>                       |  | <del>11</del>                      | <del>11</del> |                                |                |                |   | <u>do</u>                  |   | <u>do</u>                |
| 61                           | <u>Stables</u>                                      | 1                   |  |  | <u>Stephen Lane</u>                     | <u>Head</u>                           | <u>Man</u>                               | <u>59</u>                          | <u>48</u>     | <u>Head Coachman</u>           |                | X              |   | <u>London</u>              |   | <u>English</u>           |
|                              |   |                     |  |  | <u>Jennies</u>                          | <u>Wife</u>                           |  | <del>48</del>                      | <del>48</del> |                                |                |                |   | <u>Stratford-upon-Avon</u> |   | <u>"</u>                 |
|                              |   |                     |  |  | <u>William Brewster</u>                 | <u>Grades</u>                         | <u>Single</u>                            | <u>20</u>                          | <u>20</u>     | <u>Yardman</u>                 |                | X              |   | <u>Norwich</u>             |   | <u>"</u>                 |
|                              |   |                     |  |  | <u>George Sargent</u>                   |                                       |  | <u>24</u>                          | <u>24</u>     | <u>Helper</u>                  |                | X              |   | <u>Leamington</u>          |   | <u>"</u>                 |
| 62                           | <u>do</u>   | 1                   |  |  | <u>Melham Evans</u>                     | <u>Head</u>                           | <u>Man</u>                               | <u>52</u>                          | <u>52</u>     | <u>Joiner</u>                  |                | X              |   | <u>Leamington</u>          |   | <u>Both</u>              |
|                              |   |                     |  |  | <u>Oliver</u>                           | <u>Wife</u>                           |  | <del>52</del>                      | <del>52</del> |                                |                |                |   | <u>Leamington</u>          |   | <u>English</u>           |
|                              |   |                     |  |  | <u>Ralph G.</u>                         | <u>Son</u>                            | <u>Single</u>                            | <u>24</u>                          | <u>24</u>     | <u>Joiner</u>                  |                | X              |   | <u>Cardiff Wales</u>       |   | <u>Both</u>              |
|                              |   |                     |  |  | <u>George Nicholas Smith</u>            | <u>do</u>                             |  | <del>12</del>                      | <del>12</del> |                                |                |                |   | <u>do</u>                  |   | <u>Both</u>              |
| 63                           | <u>do</u>   | 1                   |  |  | <u>Andrew Pettigrew</u>                 | <u>Head</u>                           | <u>Man</u>                               | <u>51</u>                          | <u>51</u>     | <u>Gardener</u>                |                | X              |   | <u>Scotland</u>            |   | <u>English</u>           |
|                              |   |                     |  |  | <u>Agnes</u>                            | <u>Wife</u>                           |  | <del>47</del>                      | <del>47</del> |                                |                |                |   | <u>do</u>                  |   | <u>do</u>                |
|                              |   |                     |  |  | <u>Mary</u>                             | <u>Daughter</u>                       | <u>Single</u>                            | <u>24</u>                          | <u>24</u>     | <u>Gardener</u>                |                | X              |   | <u>Scotland</u>            |   | <u>do</u>                |
|                              |   |                     |  |  | <u>Hugh</u>                             | <u>Son</u>                            |  | <del>20</del>                      | <del>20</del> |                                |                |                |   | <u>Cardiff Glam</u>        |   | <u>do</u>                |
|                              |   |                     |  |  | <u>Andrew</u>                           | <u>Son</u>                            |  | <del>15</del>                      | <del>15</del> |                                |                |                |   | <u>do</u>                  |   | <u>do</u>                |
|                              |   |                     |  |  | <u>Agnes</u>                            | <u>Daughter</u>                       |  | <del>13</del>                      | <del>13</del> |                                |                |                |   | <u>do</u>                  |   | <u>do</u>                |
| 64                           | <u>Back of Park Place</u>                           | 1                   |  |  | <u>Thomas Bartlett</u>                  | <u>Head</u>                           | <u>Man</u>                               | <u>46</u>                          | <u>46</u>     | <u>Manager of Bus</u>          |                | X              |   | <u>Barnsley West Eng</u>   |   | <u>do</u>                |
|                              |   |                     |  |  | <u>Lucy</u>                             | <u>Wife</u>                           |  | <del>39</del>                      | <del>39</del> |                                |                |                |   | <u>Abington</u>            |   | <u>do</u>                |
|                              |   |                     |  |  | <u>Ernest Wm</u>                        | <u>Son</u>                            |  | <del>11</del>                      | <del>11</del> |                                |                |                |   | <u>do</u>                  |   | <u>do</u>                |
|                              |   |                     |  |  | <u>Richard G.</u>                       | <u>do</u>                             |  | <del>5</del>                       | <del>5</del>  |                                |                |                |   | <u>Cardiff Wales</u>       |   | <u>do</u>                |
|                              |   |                     |  |  | <u>Alfred J.</u>                        | <u>do</u>                             |  | <del>4</del>                       | <del>4</del>  |                                |                |                |   | <u>do</u>                  |   | <u>do</u>                |

Total of Houses and of Tenements with less than Five Rooms ... 44 / 11 / 11 Total of Males and Females... 16 / 8 / 1











POPULAR NEW KITCHEN REQUISITE.

THE  
**'HOME' Cake Maker.**

(PATENTED.)

Price  
**7/-**  
Each.



Price  
**7/-**  
Each.

Saves time and labour in mixing ingredients for all kinds of Cakes, and mixes perfectly.

The "HOME" Cake Maker works successfully with any kind of flour that is ordinarily used for making Cake.

For further description see Booklet, with Recipes, free on application.

If obtained in order, 6d. extra.

POPULAR NEW KITCHEN REQUISITES.

"UNIVERSAL"  
**FOOD CHOPPER.**

(By Royal Letters Patent.)



No. 0 Size, 4/9; No. 2 Size, 5/6  
" 1 " 5/-; " 3 " 9/-  
Stuffing Attachments for  
No. 2 and 3 only, 1/6 each.

Ask for —

THE  
**"UNIVERSAL"  
COOK BOOK**

(Free on Application.)

Containing Recipes for a number of excellent dishes which can be best made with the

"Universal"  
**Food Chopper.**

"THREE-MINUTE" **BREAD MAKER.**

(By Royal Letters Patent.)

The 'Three Minute' Bread Maker does the Mixing and Kneading of the dough in Three Minutes.

The dough is not touched by the hands at all.

Twenty to thirty minutes of the work of hand Kneading is done in Three Minutes.

The Kneading is done scientifically, and the bread is much better than when Kneaded by hand.



PRICES: 8/- and 10/6  
Ask for Recipe Booklet.

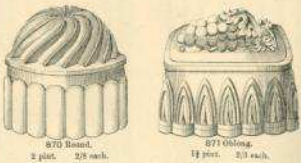
Can be obtained in order at short notice if not in stock.

JELLY MOULDS.



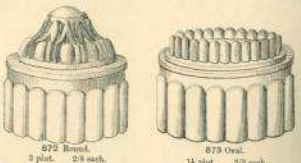
868 Oval.  
2 pint. 2/8 each.

869 Oval.  
2 pint. 2/8 each.



870 Round.  
2 pint. 2/8 each.

871 Oblong.  
1 1/2 pint. 2/3 each.



872 Round.  
2 pint. 2/8 each.

873 Oval.  
1 1/2 pint. 2/3 each.

CAKE OR JELLY MOULDS.



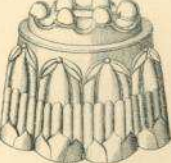
874 Oval.  
1 1/2 pint. 2/8 each.

2 " 2/8 "



875 Oval.  
1 1/2 pint. 2/8 each.

2 " 2/8 "

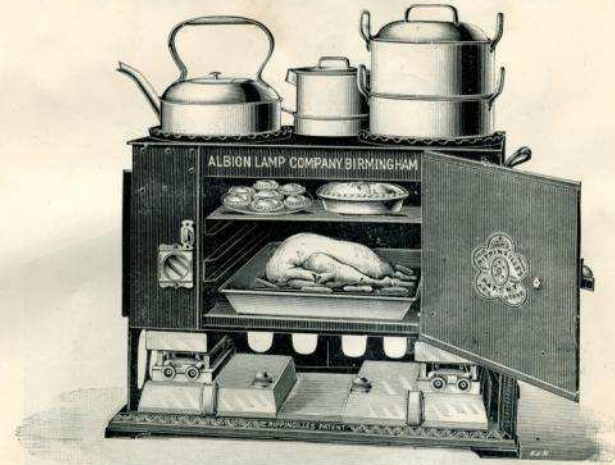


876 Oval.  
1 1/2 pint. 2/8 each.

2 " 2/8 "

PATENT PRIZE MEDAL "RIPPINGHAM" OIL COOKING STOVES.

A.B.C. KITCHENER.



No. 73.

LARGE and powerful FAMILY COOKING STOVE; fitted with four 4 1/2-inch burners and patent extinguishers, patent sliding tanks, oven complete with meat tray and grid, ornamental cast-iron base, cast-iron fitting rings, and heat deflectors. By an ingenious arrangement a most perfect bottom heat is obtained. The stove will carry on five or six cooking operations at the same time, and will roast, bake, boil, stew, steam, toast, fry, &c. The top is fitted with Patent Cast-iron Ventilating Dampers.

SIZE OF STOVE:

Length at base, 27 inches. Height, 19 1/2 inches. Width, 14 inches.

SIZE OF OVEN:—Available cooking space, 14 1/2 x 13 x 9 inches.

PRICE.

Stove, with Meat Tray and Grid, 75/-; 6-pint Kettle, 3/-; Stewpan, 3/-; Small Stewpan, 1/8; Steamer, 2/6; Frypan and Cover, 1/9; Oval Boiler and Potato Steamer, 9/-; Toast Hanger, 2/6; Cottons, 3/9 per box.



PRESENT-DAY GAS FITTINGS

No. 6206.  
Projection, 9 in.  
Polished Brass ... 2/- each.  
Burner and Mantle 5/- extra.  
Globe extra.

No. 6184  
Spread, 14 in.  
2-Light, 11/-  
3-Light, 12/-  
Burners,  
No. 3, 4/-  
per Light  
extra.

No. 6133.  
Projection, 8 1/2 in.  
Polished Brass ... 7/6 each.  
Wood Block ... 1/2 extra.  
Burner No. 3 and Mantle ... 4/6 ..  
Globe 6145 ... 1/6 ..

No. 11632  
3-Light, Fall  
Brass, with  
Hammered  
Work,  
33/9 each

No. 3 "Dart"  
Burner,  
120 Candles,  
4/6 per lb.  
extra.

No. 1177.  
Strong Polished Brass Inverted Fitting.  
2-Light ... 12/9  
3-Light ... 16/3  
Glass and Holder extra.

A call will convince you that we are right for Gas Fittings.

LATEST NOVELTIES OUT.

THE "NEW HANWELL"  
Patent Rising & Falling Pendant.  
No. 43a.

A perfectly symmetrical gas fitting without weights or varying tension springs. The fitting proper is under 2 1/2 inches closed and when fully extended is 7 feet, giving a variation of 4 ft., the greatest obtained by any gas fitting in the World.

No. 30.  
Polished Brass or Steel Bronze, 27/6  
Oxidized Copper Finish, 30/-  
Antique Silver, 35/-

No. 6316. 5 1/2 in. Projection.  
Electric Pattern. For Bijou Burners.  
Very Artistic.  
Bracket only, Polished Brass ... 11/3 each.  
Wood Block ... 1/6 ..  
Complete with Two Bijou Burners and 6250 Tinted Globe ... 21/- ..

A call will convince you that we are right for Gas Fittings.

PATENT THE PATENT

# TORNADO Flush

WITH PATENT AFTER FLUSH CHAMBER

**WASH OUT**

S. OR P. TRAP.

No. 10—Bain (30/-)  
Mahogany Seat (4/-)  
Brackets, Painted (4/6)  
Rubber Connection (1/6)  
Chain & Brackets (16/6)  
Chain Pull (1/6)

Patent After Flush Chamber

No. 2—Plain, White or Ivory, 23/6

No. 3—Fire Clay, 18/6

No. 10—Printed, Neutral on White, 29/-

Printed Patterns (Nos. 7, 8, 9 or 10.)  
Complete, £3 7 0

SECTION.

Water Seal in Trap, 3 in.

No. 9—Printed, Brown on Ivory, 29/-



















Administrative County Glamorgan

The undermentioned Houses are situate within the boundaries of the

| Civil Parish      |   | Ecclesiastical Parish |               | County Borough, Municipal Borough, or Urban District |                                 | Ward of Municipal Borough or of Urban District |                          | Rural District       |         | Parliamentary Borough or Division                        |                                  | Town or Village or Hamlet |                      |  |  |
|-------------------|---|-----------------------|---------------|--|---------------------------------|--|--------------------------|----------------------|---------|--|----------------------------------|---------------------------|----------------------|--|--|
| of <u>S' John</u> |   | of <u>S' John</u>     |               | of <u>Cardiff</u>                                    |                                 | of <u>Cathays</u>                              |                          | of <u>Cardiff</u>    |         | of <u>Cardiff</u>  |                                  | of <u>Cardiff</u> 12      |                      |  |  |
| No. of Schedules  | ROAD, STREET, &c. and No. or NAME of HOUSE                                  | HOUSES                |               |  | Name and Surname of each Person | RELATION to Head of Family                     | Condition as to Marriage | Age last Birthday of |         | PROFESSION OR OCCUPATION                                 | Employer, Worker, or Own account | If Working at Home        | WHERE BORN           | If Deaf and Dumb (1) Blind (2) Lunatic (3) Imbecile, feeble-minded (4) | LANGUAGE SPOKEN (children under 3 years of age to be excluded) |
|                   |   | Inhabited             | In Occupation | Building   |                                 |  |                          | Males                | Females |  |                                  |                           |                      |  |  |
| 86                | 13 Llansthan St   | -                     |               |  | Jones M. With                   | servt.   | S                        | 18                   |         | <del>Servant domestic</del> <del>work</del>              |                                  |                           | Glam. Cardiff        |  | English  |
| 87                | " " "   | 1                     |               |  | Valentine J. Jean               | head   | M                        | 37                   |         | <del>Shoemaker</del> <del>Head</del> <del>Employer</del> |                                  |                           | London               |  | "  |
|                   | " " "   |                       |               |  | Ada Louise do                   | wife   | M                        | 36                   |         |  |                                  |                           | do do                |  | "  |
|                   | " " "   |                       |               |  | Frank Guss. do                  | son  | S                        | 15                   |         |  |                                  |                           | do do                |  | "  |
|                   | " " "   |                       |               |  | Dora Agnes do                   | daur   | S                        | 7                    |         |  |                                  |                           | Somerset Bristol     |  | "  |
| 88                | " " "   | 1                     |               |  | John Dymal Davies               | head   | M                        | 32                   |         | <del>Unitarian</del> <del>Ministry</del>                 |                                  |                           | Cardigan Llanswell   |  | both   |
|                   | " " "   |                       |               |  | Ellen do                        | wife   | M                        | 21                   |         |  |                                  |                           | Devon. Devonport     |  | English  |
| 89                | " " "   | 1                     |               |  | Harold Leigh                    | head   | M                        | 28                   |         | <del>Shopkeeper</del>                                    | employee                         |                           | Lanc. Liverpool      |  | "  |
| 90                | 1 Manor S <sup>r</sup>  | 1                     |               |  | Francis Ethel do                | servt.   | M                        | 28                   |         |  |                                  |                           | Glam. Cardiff        |  | "  |
|                   | " " "   |                       |               |  | Edith Ursula do                 | daur   | S                        | 2                    |         |  |                                  |                           | do do                |  | "  |
|                   | " " "   |                       |               |  | Francis Daniel                  | servt.   | S                        | 18                   |         | <del>general servt. (post)</del>                         | worker                           |                           | Monmouth Newport     |  | "  |
| 91                | " " "   | 1                     |               |  | Geo. H. Leonard                 | head   | M                        | 37                   |         | <del>House Painter</del>                                 | employee                         |                           | Devon Bideford       |  | "  |
|                   | " " "   |                       |               |  | Selina do                       | wife   | M                        | 37                   |         |  |                                  |                           | do do                |  | "  |
|                   | " " "   |                       |               |  | Stanley Geo do                  | son  | S                        | 8                    |         |  |                                  |                           | Glam. Cardiff        |  | "  |
| 92                | " " "   | 1                     |               |  | Alfred Thompson                 | head   | M                        | 31                   |         | <del>Railway Clerk</del>                                 | worker                           |                           | do do                |  | "  |
|                   | " " "   |                       |               |  | Annie Thompson                  | wife   | M                        | 31                   |         |  |                                  |                           | Staffs Wolverhampton |  | "  |
| 93                | " " "   | 1                     |               |  | Samuel Jenkins                  | head   | M                        | 24                   |         | <del>Advertisement Clerk</del>                           | worker                           |                           | India (Brit. subj.)  |  | "  |
|                   | " " "   |                       |               |  | Lilian do                       | wife   | M                        | 24                   |         |  |                                  |                           | Glam. Cardiff        |  | "  |
|                   | " " "   |                       |               |  | Samuel Incecombe                | head   | M                        | 49                   |         | <del>Painter</del>                                       | worker                           |                           | Glam. Brierley       |  | both   |
|                   | " " "   |                       |               |  | Hapsitah do                     | wife   | M                        | 47                   |         |  |                                  |                           | Devon Devonport      |  | English  |
|                   | " " "   |                       |               |  | Wm Samuel do                    | son  | S                        | 14                   |         | <del>Brass Boylot.</del>                                 | worker                           |                           | Glam. Cardiff        |  | "  |
|                   | " " "   |                       |               |  | Margaret Mabel do               | daur   | S                        | 9                    |         |  |                                  |                           | do Llandaff          |  | "  |
|                   | " " "   |                       |               |  | Cyril Morgan                    | boarder  | S                        | 12                   |         |  |                                  |                           | Glas. Bristol        |  | "  |
|                   | " " "   |                       |               |  | John do                         | boarder  | S                        | 8                    |         |  |                                  |                           | do do                |  | "  |
| 94                | " " "   | 1                     |               |  | James Wide                      | head   | M                        | 26                   |         | <del>Architect assistant</del>                           | worker                           |                           | Glam. Llansthan      |  | "  |
|                   | " " "   |                       |               |  | Charlotte do                    | wife   | M                        | 27                   |         |  |                                  |                           | do Aberdare          |  | "  |
|                   | " " "   |                       |               |  | Quwengau do                     | daur   | S                        | 4                    |         |  |                                  |                           | do Cardiff           |  | "  |
| 95                | " " "   | 1                     |               |  | William Colbourne               | head   | M                        | 30                   |         | <del>Plasterer</del>                                     | worker                           |                           | Wilts. Swindon       |  | "  |
|                   | " " "   |                       |               |  | Louisa Kate do                  | wife   | M                        | 26                   |         |  |                                  |                           | Somerset Bath        |  | "  |
|                   | " " "   |                       |               |  | Emma Bertha do                  | daur   | S                        | 2                    |         |  |                                  |                           | Glam. Sengcynlleid   |  | "  |
|                   | " " "   |                       |               |  | Wm Nelson do                    | son  | S                        | 1                    |         |  |                                  |                           | do Cardiff           |  | "  |
| 96                | Total of Males and of Females...  |                       |               |  |                                 |  |                          |                      |         |  |                                  |                           |                      | 15   | 16   |
| 97                | Total of Schedules of Houses and of Tenements with less than Five Rooms ... |                       |               |  |                                 |  |                          |                      |         |  |                                  |                           |                      | 9  |  |

Some words of the headings as are inapplicable.



Civil Parish

Ecclesiastical Parish

County Borough, Municipal Borough, or Urban District

Ward of Municipal Borough or of Urban District

Rural District of Gelligaer & Rhigos (part of)

Parliamentary Borough or Division of East Glamorgan

Town or Village or Hamlet of Barry

of Gelligaer (part of)

of Gelligaer (part of)

of

of

of

of

of

| 1                | 2  | 3         |             |           |                                  | 7                          | 8                        | 9                    | 10                        | 11       |         | 13                               | 14                 | 15         | 16                | 17  |  | 18        |
|------------------|--|-----------|-------------|-----------|----------------------------------|----------------------------|--------------------------|----------------------|---------------------------|----------|---------|----------------------------------|--------------------|------------|-------------------|---|--|-----------|
|                  |  | HOUSES    |             |           |                                  |                            |                          |                      |                           | Males    | Females |                                  |                    |            |                   | Deaf and Dumb Blind Lame, Imbecile, feeble-minded | LANGUAGE SPOKEN (children under 3 years of age to be excluded) |           |
| No. of Schedules | ROAD, STREET, &c. and No. or NAME of HOUSE                               | Inhabited | Uninhabited | Buildings | Name and Surname of each Person  | RELATION to Head of Family | Condition as to Marriage | Age last Birthday of | PROFESSION OR OCCUPATION  |          |         | Employer, Worker, or Own account | If Working at Home | WHERE BORN | (1) Deaf and Dumb |   |  | (2) Blind |
| 55               | 11, Factory Rd.  | 1         |             | 4         | Josiah Jenkins                   | Head                       | M                        | 27                   | Coal - Hewer              | Worker   |         | Mon: Amosberg                    |                    |            |                   | Both  |  |           |
|                  |  |           |             |           | Rebecca Do                       | Wife                       | M                        | 25                   |                           |          |         | Glam: Dewi                       |                    |            |                   | Both  |  |           |
|                  |  |           |             |           | Blodwen Do                       | Daughter                   | M                        | 4                    |                           |          |         | Do: Barry                        |                    |            |                   | English   |  |           |
|                  |  |           |             |           | George Do                        | Son                        | M                        | 2                    |                           |          |         | Do: Do                           |                    |            |                   |   |  |           |
|                  |  |           |             |           | Josiah Do                        | Son                        | M                        | 1                    |                           |          |         | Do: Do                           |                    |            |                   |   |  |           |
| 56               | 10 Do  | 1         |             | 4         | John Jenkins                     | Head                       | M                        | 41                   | Coal - Hewer              | Worker   |         | Pembrok: Pilsigrad               |                    |            |                   | Both  |  |           |
|                  |  |           |             |           | Mary A. Do                       | Wife                       | M                        | 40                   |                           |          |         | Glam: Merthyr                    |                    |            |                   | Both  |  |           |
|                  |  |           |             |           | Thomas J. Carter                 | Grandson                   | M                        | 13                   | Coal - Hewer              | Worker   |         | Do: Dewi                         |                    |            |                   | English   |  |           |
|                  |  |           |             |           | Julia Do                         | Granddaughter              | F                        | 11                   |                           |          |         | Do: Dewi                         |                    |            |                   | English   |  |           |
| 57               | 9 Do   | 1         |             | 4         | Samuel Price                     | Head                       | M                        | 25                   | Coal - Hewer              | Worker   |         | Do: Trifhel                      |                    |            |                   | English   |  |           |
|                  |  |           |             |           | Miriam Do                        | Wife                       | M                        | 23                   |                           |          |         | Do: Vochin                       |                    |            |                   | Both  |  |           |
| 58               | 8 Do   | 1         |             | 4         | David Morgan                     | Head                       | M                        | 45                   | Contractor (Underground)  | Worker   |         | Cardigan: Cardigan               |                    |            |                   | Both  |  |           |
|                  |  |           |             |           | Margaret Do                      | Wife                       | M                        | 45                   |                           |          |         | Do: Do                           |                    |            |                   | Both  |  |           |
|                  |  |           |             |           | Anne J. Do                       | Daughter                   | F                        | 14                   |                           |          |         | Do: Do                           |                    |            |                   | Both  |  |           |
| 59               | 7 Do   | 1         |             | 4         | Fredrick Williams                | Head                       | M                        | 54                   | Wool: Spinners            | Worker   |         | Pen: St Dogmelles                |                    |            |                   | Welsh   |  |           |
|                  |  |           |             |           | Miriam Do                        | Wife                       | M                        | 53                   |                           |          |         | Glam: Pontypridd                 |                    |            |                   | Welsh   |  |           |
| 60               | 6 Do   | 1         |             | 4         | John J. Do                       | Son                        | M                        | 20                   | Stock: Stationary Engine  | Worker   |         | Do: Znaikin Yards                |                    |            |                   | Both  |  |           |
|                  |  |           |             |           | Anne James                       | Head                       | M                        | 50                   |                           |          |         | Mon: Beckwith                    |                    |            |                   | Both  |  |           |
|                  |  |           |             |           | Ada W. Do                        | Daughter                   | F                        | 15                   |                           |          |         | Glam: Cardiff                    |                    |            |                   | English   |  |           |
|                  |  |           |             |           | Joseph Hughes                    | Brother                    | M                        | 56                   | Coal - Hewer              | Worker   |         | Mon: Cross Mountain Dike         |                    |            |                   | Both  |  |           |
|                  |  |           |             |           | John Jordan                      | Boarder                    | M                        | 63                   | Woolen Weaver             | Worker   |         | Glam: Merthyr Tydfil             |                    |            |                   | Both  |  |           |
|                  |  |           |             |           | Emah Jones                       | Boarder                    | F                        | 48                   | Woolen Weaver             | Worker   |         | Swan: Corwen                     |                    |            |                   | Both  |  |           |
| 62               | 5 Do   | 1         |             | 4         | Daniel Davis                     | Head                       | M                        | 59                   | Woolen Weaver             | Worker   |         | Cardigan: Triflan                |                    |            |                   | Both  |  |           |
|                  |  |           |             |           | Elanor Davis                     | Wife                       | M                        | 52                   |                           |          |         | Cardigan: Triflan                |                    |            |                   | Both  |  |           |
|                  |  |           |             |           | Sarah M. Do                      | Daughter                   | F                        | 20                   |                           |          |         | Carmarthen: Newcastle            |                    |            |                   | Both  |  |           |
|                  |  |           |             |           | John H. Do                       | Son                        | M                        | 17                   | Steam Engine: Underground | Worker   |         | Do: Do                           |                    |            |                   | Both  |  |           |
|                  |  |           |             |           | David E. Do                      | Son                        | M                        | 14                   | Woolen Card: Room Hand    | Worker   |         | Do: Do                           |                    |            |                   | Both  |  |           |
| 63               | 3 Do   | 1         |             | 4         | Morgan James                     | Head                       | M                        | 44                   | Steam: Manufacture        | Employer |         | Do: Do                           |                    |            |                   | Both  |  |           |
|                  |  |           |             |           | Mary Do                          | Wife                       | M                        | 40                   |                           |          |         | Cardigan: Triflan                |                    |            |                   | Both  |  |           |
|                  |  |           |             |           | Catherine M. Do                  | Daughter                   | F                        | 10                   |                           |          |         | Mon: Amman                       |                    |            |                   | Both  |  |           |
|                  |  |           |             |           | William J. Do                    | Son                        | M                        | 8                    |                           |          |         | Do: Rhymney                      |                    |            |                   | Both  |  |           |
|                  |  |           |             |           |                                  |                            |                          |                      |                           |          |         | Glam: Barry                      |                    |            |                   | Both  |  |           |
| 8                | Total of Schedules, of Houses and of Tenements with less than Five Rooms | 8         |             | 7         | Total of Males and of Females... |                            |                          |                      | 16                        | 15       |         |                                  |                    |            |                   |   |  |           |

NOTE - Draw your pen through such words of the headings as are inapplicable.

the following is the result.

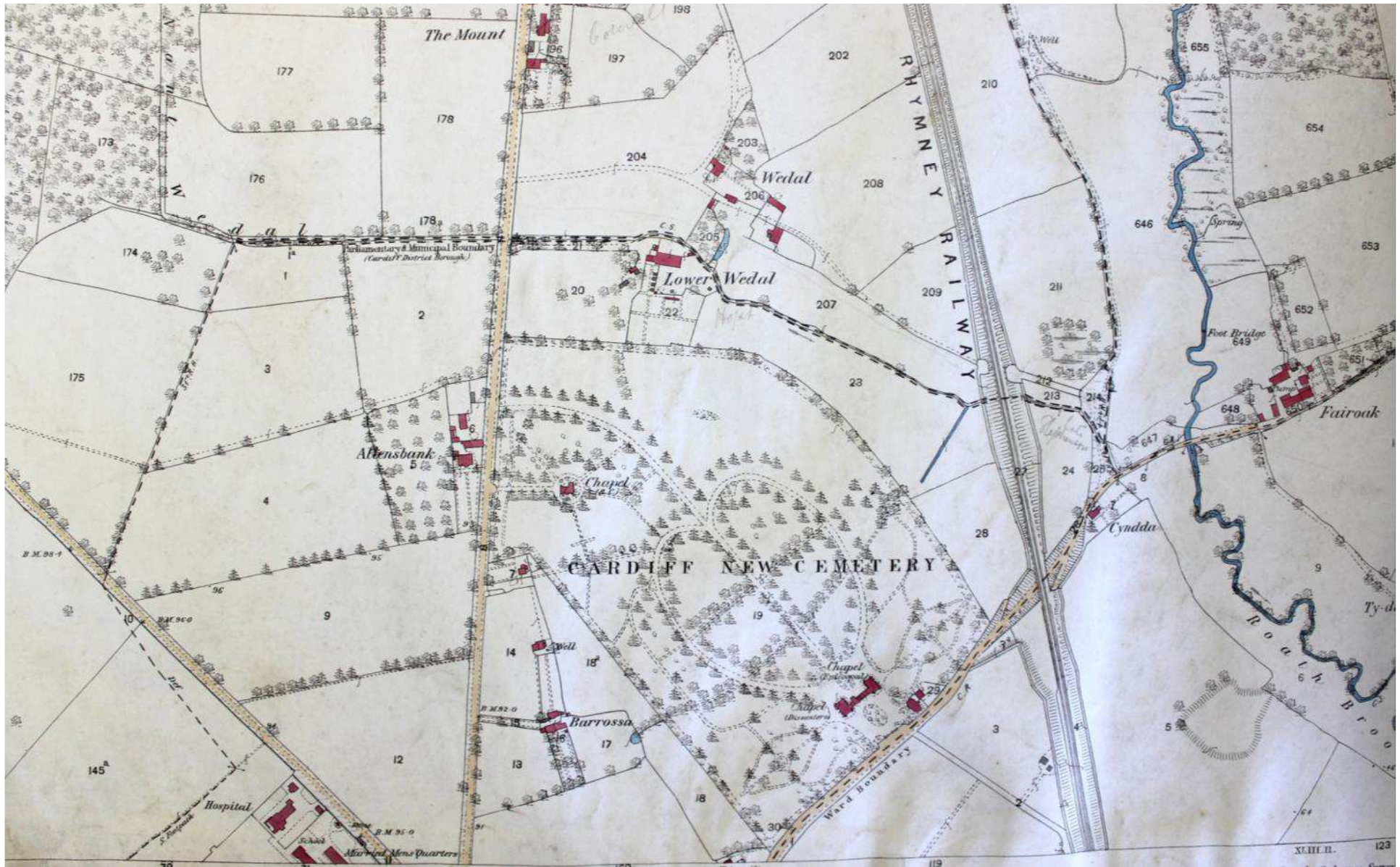
Number of Persons in the Employ of the Dowlais Iron Company 1<sup>st</sup> May 1866.

|                                       |                  | Under 10 years |       | 10 to 18 both inclusive |       | 14 to 18 both inclusive |       | Over 18 years |       | Total |
|---------------------------------------|------------------|----------------|-------|-------------------------|-------|-------------------------|-------|---------------|-------|-------|
|                                       |                  | Boys           | Girls | Boys                    | Girls | Boys                    | Girls | Men           | Women |       |
| Old Works                             | Forges and Mills | 7              |       | 44                      | 5     | 160                     | 55    | 1091          | 67    | 1429  |
| For.                                  | do               |                |       | 48                      | 20    | 98                      | 21    | 573           | 15    | 775   |
| Furnaces                              |                  |                |       | 13                      | 16    | 32                      | 59    | 559           | 123   | 802   |
| Steel Works                           |                  |                |       | 3                       |       | 2                       |       | 39            |       | 44    |
| Fitting, Pattern, & Smiths Shops.     |                  |                |       | 5                       | 1     | 78                      | 1     | 310           | 2     | 397   |
| Foundry, Carpenters, Boiler Makers &c |                  |                |       |                         |       |                         |       |               |       |       |
| Engines                               | Forge & Blast    |                |       | 8                       |       | 16                      |       | 130           | 1     | 155   |
| do                                    | Locomotive       |                |       |                         |       | 3                       |       | 18            |       | 21    |
| do                                    | Pits             |                |       |                         |       | 12                      |       | 126           |       | 138   |
| Collieries &c                         |                  |                |       | 237                     | 15    | 258                     | 34    | 1342          | 37    | 2023  |
| Mine Works, Limestone Quarries &c     |                  | 2              |       | 90                      |       | 122                     | 41    | 1248          | 200   | 1709  |
| Masons, Roadmen & Tarrives            |                  |                |       | 19                      |       | 2                       |       | 288           | 1     | 310   |
| Church Building &c                    |                  |                |       | 2                       |       | 5                       |       | 24            |       | 31    |
| Farmis                                |                  |                |       |                         |       |                         |       | 19            | 13    | 32    |
| Stables                               |                  |                |       | 2                       |       |                         |       | 82            |       | 84    |
| Railway Station                       |                  |                |       |                         |       |                         |       | 3             | 1     | 4     |
| Warehouse                             |                  |                |       |                         |       | 1                       |       | 3             |       | 4     |
| Traffic                               |                  |                |       |                         |       | 1                       |       | 17            |       | 18    |
| Wrights, Croppers &c                  |                  |                |       |                         |       | 3                       |       | 48            | 1     | 52    |
| Offices - Library - Post &c           |                  |                |       |                         |       | 11                      |       | 32            | 5     | 48    |
| Schools                               |                  |                |       |                         | 7     |                         | 32    | 9             | 17    | 55    |
| Cardiff Yard                          |                  |                |       |                         |       | 6                       |       | 58            |       | 64    |
| Edge Hill Mines                       |                  |                |       | 28                      |       | 58                      |       | 195           | 1     | 282   |
| London & Liverpool Houses &c          |                  |                |       |                         |       |                         |       | 23            |       | 23    |
| Total                                 |                  | 9              |       | 505                     | 64    | 968                     | 223   | 6237          | 484   | 8500  |

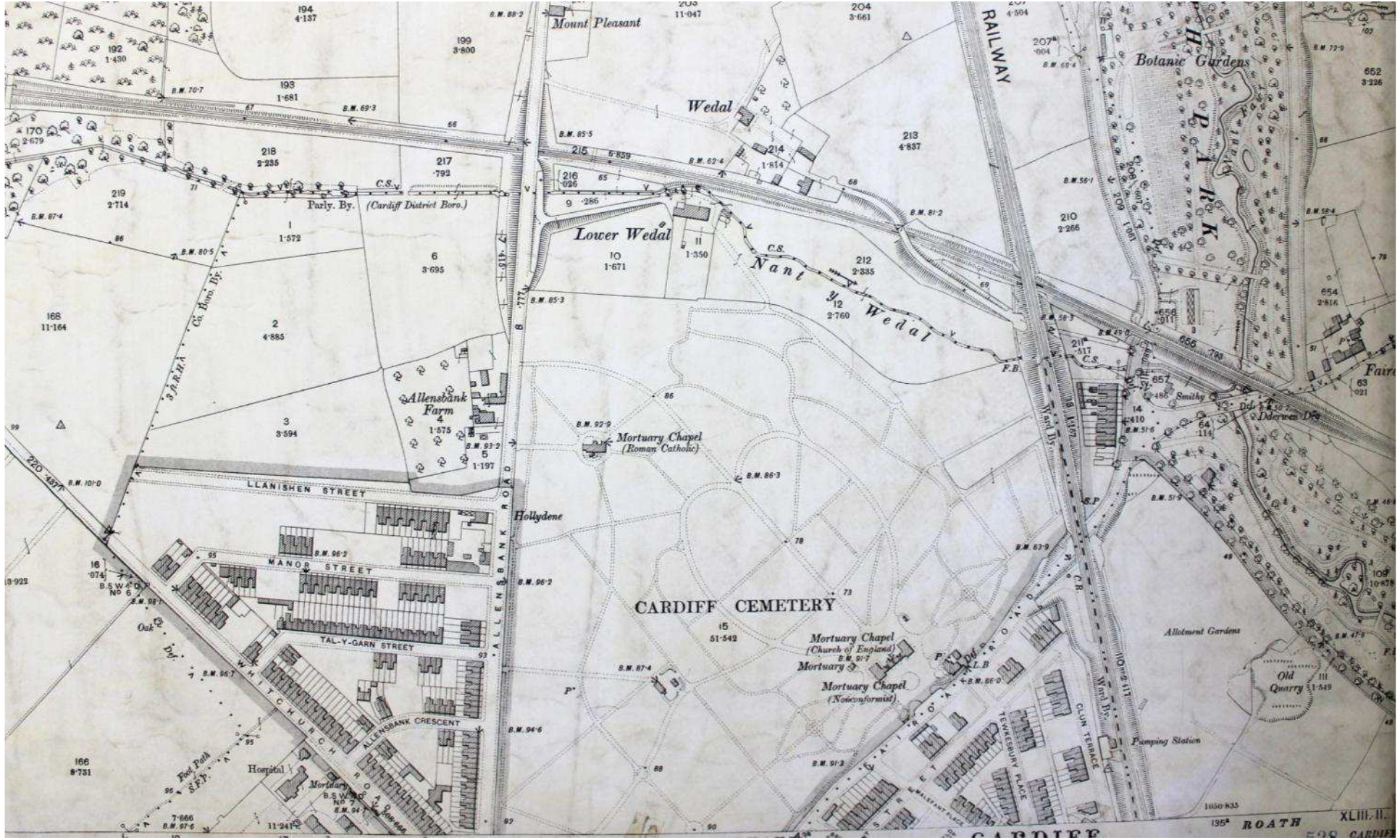
Summary of the Above.

|                       |      |      |                |      |
|-----------------------|------|------|----------------|------|
| Males under 18 years. | 1482 |      | Males Employed | 7719 |
| Females " 18 "        | 297  | 1779 | Females "      | 781  |
| Males above 18 "      | 6237 |      |                |      |
| Females " 18 "        | 484  | 6721 |                |      |
| Total                 |      | 8500 | Total          | 8500 |









Mount Pleasant

Wedal

Lower Wedal

Nant Wedal

Botanic Gardens

Allensbank Farm

Mortuary Chapel (Roman Catholic)

CARDIFF CEMETERY

Mortuary Chapel (Church of England)

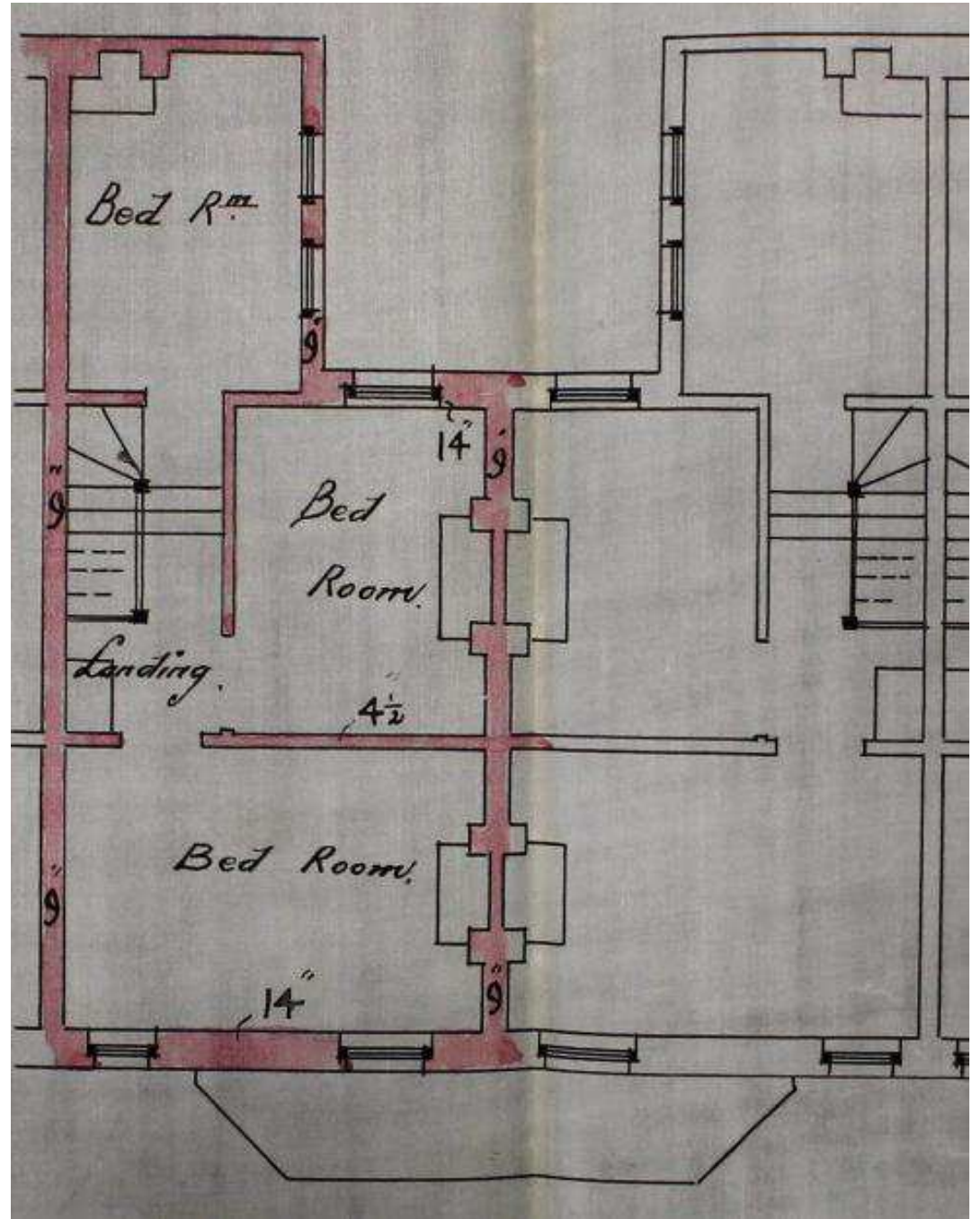
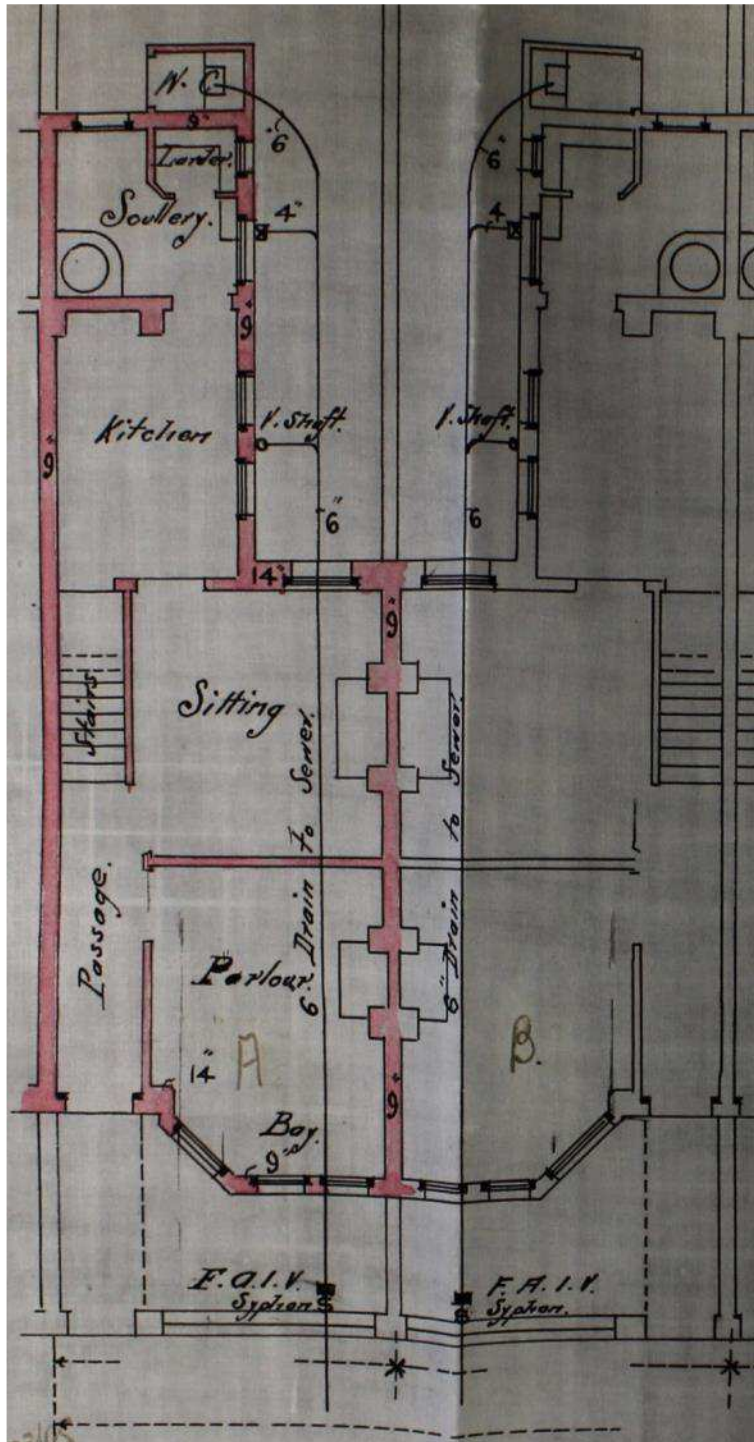
Mortuary

Mortuary Chapel (Nonconformist)

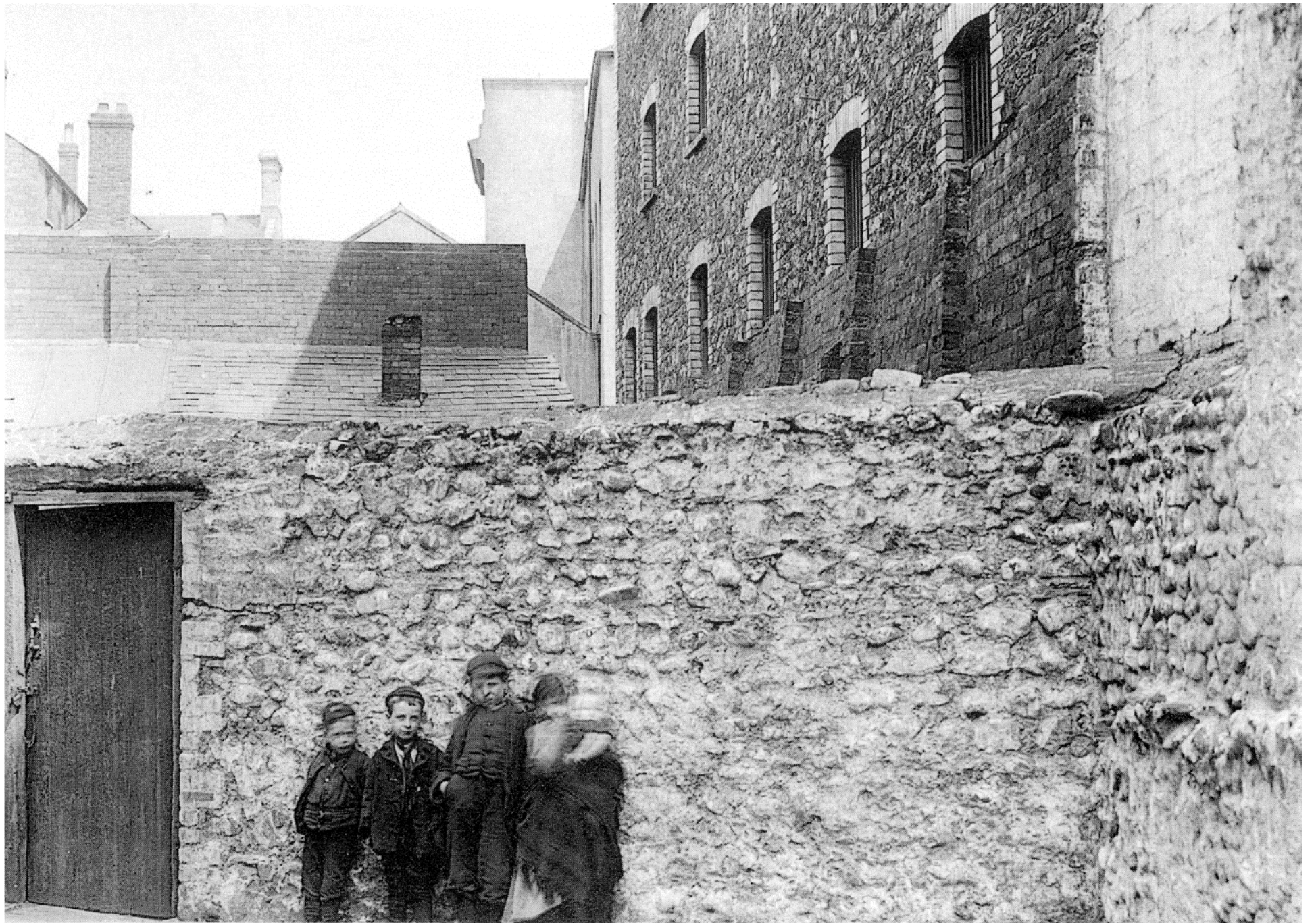
Old Quarry

1850-835 195<sup>a</sup> ROATH XLIII. II. 598 CARDIFF













**Samorgan,**

To Wit.

**Be it Remembered,** That on the *twenty eighth* day of *May* in the year of our Lord One Thousand Eight Hundred and Sixty *seven* at the Police Court at Merthyr-Tydfil in the said County *Merthyr-Tydfil* *Thomas Barry* under the age of sixteen years being charged before *me* the undersigned *of Her Majesty's Justices of the Peace for the said County, and a Stipendiary Magistrate for the Parish of Merthyr-Tydfil* in the said County, and consenting to *deciding upon the charge summarily is convicted before* for that he the said *Thomas Barry* on the *twenty seventh* day of *May* instant at the Parish of Merthyr-Tydfil

in the County aforesaid, did feloniously steal, take and carry away *Six Shubarb-roots of the value of three pence of the goods and chattels of one Mary Hopkins, a widow against the peace of our Lady the Queen the Queen and Deputy and I adjudge the said Thomas Barry to his said Office to be imprisoned in the House of Correction at Swansea in the said County for the space of fourteen days and there kept to hard labour for that period and I also direct pursuant to the Act for the better care and reformation of youthful offenders the said Thomas Barry to be sent at the expiration of his said sentence to the Reformatory School at Haverford West in the said County (the Managers thereof being willing to receive him therein) and there detained for the period of four years commencing from the tenth day of June next.*

And *me* adjudged the said *Thomas Barry* for his said Offence to be imprisoned in the House of Correction, at Cardiff in the said County, and there kept to hard labour for the space of *fourteen days*

Given under *my* Hand and Seal, the day and year first above mentioned, at the Police Court at Merthyr-Tydfil in the County aforesaid.

*Given under my Hand and Seal at the Day and Year and at the place first above mentioned*



C  
Criminal Justice  
Act of 1875 (s. 120, &c.)  
Conviction.  
*F. J. J. J.*



BOROUGH OF CARDIFF,  
IN THE  
COUNTY OF GLAMORGAN,  
(to wit.)



BE IT REMEMBERED, That on the *fifteenth* day of *July* —  
in the year of our Lord One Thousand Eight Hundred and *Fifty-sixty-three* at the Borough of Cardiff, in the County  
of Glamorgan, *Mary Jones*  
is convicted before us *John Bird and Robert Oliver Jones Esquires Two*

of Her Majesty's Justices of the peace for the said Borough, for that she the said *Mary Jones*  
on the *fourteenth* day of *July* in the year aforesaid, at the Borough  
of Cardiff aforesaid, then and there being under the age of Sixteen years, to wit, of the age of *fifteen*  
years *one shawl* of the ~~monies~~ goods,  
and chattels of *James Sander*, then and there being found, then and there feloniously did  
steal, take and carry away, against the peace of our Lady the Queen, her Crown, and dignity: and we, the said Justices adjudge  
the said *Mary Jones* for ~~the~~ said offence, to be imprisoned in the Common Goal,  
at Cardiff, in the said County for the space of  
*fourteen days*

Given under our hands and seals, on the day and year, and at the place first above mentioned.

5/19

*John Bird*  
*Robert Oliver Jones*

May 23. Fair attendance only 237.  
Several cases of scarlet fever  
and chicken pox are reported.  
98

today with several cases  
of absence with measles.  
One death from diphtheria.

many cases of typhoid fever  
as the result of soil



Several cases of Whooping  
Cough reported - average  
1.24

Oct-24 (Friday). Oblayed to send  
two children home suffering  
from Kingdome -

March 1<sup>st</sup>

Monday. Was unable to  
open school this morning  
owing to the snow -  
only 16 children & four  
teachers present.

March 2<sup>nd</sup> Tuesday. The school was closed.

March 3<sup>rd</sup>  
to 234.

Wednesday being a  
very wet day the numbers  
were very low. James Campbell



Nov 25<sup>th</sup>

Wednesday. Very wet day.  
Only 50 children present  
in the afternoon - these  
were so wet, that we  
were obliged to send them  
home.

There are a large number  
away with colds  
but I think it is

Oct 24<sup>th</sup> (Wednesday) Holiday given  
to celebrate the opening of  
the University College

Aug 17<sup>th</sup> Monday. Rather poor  
attendance today, owing to  
a workmen's picnic in the  
vicinity

officers' ch<sup>r</sup>. in lower  
classes are very regular  
during this hot weather.



Wednesday: School closed D-day.  
- Sunday School Treats - and  
Barnum and Bailey's Show.

5<sup>th</sup> Wednesday: School closed this afternoon, on  
account of Football League Sports.



# R U L E S

OF THE

## LANTWIT NATIONAL SCHOOL,

ESTABLISHED JUNE 6th, 1831.

---

1. THE School opens at ten minutes after nine in the morning, and twenty minutes before two in the evening. A bell is rung at nine and at half past one, and the names are called over at the end of ten minutes from the first sound of the bell.

2. Those children who do not answer to their names are punished by being kept at school after the others are dismissed, allowing a quarter of an hour for every five minutes missed, half an hour for ten minutes, and an hour for twenty minutes.

3. No child is at any time allowed to be absent without leave from the Master, obtained by one of his parents or near relations *in person* the day before. The names of all who are absent both with and without leave are regularly entered



18<sup>th</sup> Improved Attendance today  
 19<sup>th</sup> Exam. for St<sup>ds</sup> 4, 5, 6 and 7  
 this morning Punished J. Meddell  
 20<sup>th</sup> Exam. for St<sup>ds</sup> 2 and 3 this morn.

159

1890.

(4) Aug 20 Tested Registers and found them correct  
Miss

21<sup>st</sup> Examination for St<sup>d</sup> I this morning  
 girls. instead of Tables for St<sup>d</sup> I 2.30  
 to 3. p. m.

22<sup>nd</sup> Punished four St<sup>d</sup> I girls for careless work  
 in Arithmetic lesson.

23<sup>rd</sup> Exam. for St<sup>ds</sup> 1 and 2 this morn.

was morning.

72 girls (Stds (IV, V & VI) at  
Cookery this morning.

carrying prepared

The Arithmetic and  
Composition deserve special  
mention. The needlework  
was excellently done, and

June 1<sup>st</sup> (Friday) - Sarah Gunder gave  
a good Quilter pattern lesson  
to II class on "Paper Folding"



Oct 19<sup>th</sup> (Friday) Gave a first lesson  
 in Mat. Plotting & II class  
 Gerb - Mr Jones took the boys  
 for Drawing - Average for

March 11<sup>th</sup> Wednesday - Examined  
 II section - Find them  
 very much improved  
 especially in writing  
 I find the triple lines  
 a great assistance.

If the worth of 15 oz. 12 dwt. of gold  
 that is 18 carats fine be £ 49. 13. 10d., what  
 is the worth of 6 oz 15 dwt. of gold  
 that is 14 carats fine.

|   |                  |                 |
|---|------------------|-----------------|
| 15 oz 12 dwt. of gold 18 carats fine cost | 11926            |                 |
| 1 ————— 18 —————                          | 11926            | <u>312</u>      |
| 1 ————— 1 —————                           | 11926            | <u>312 x 18</u> |
| 6 oz 15 dwt. ————— 1 —————                | 11926 x 135      | <u>312 x 18</u> |
| 6 15 ————— 14 —————                       | 11926 x 136 x 14 | <u>312 x 18</u> |

Pence.

11926

135

59630

35778

11926

1610010

14

6440040

1610010

5616) 22540140 (4013 12) 4013

22464

7614

5616

19980

16848

3132

Pence

22) 334.5

Ans £ 16. 14. 5















# APPROVED SCHOOL DRILL.

## WORDS OF COMMAND.

- Fall in.** Form in line, number from right to left. Odd numbers one pace to front, even numbers one pace to back. March.  
Open out for Drill. March.  
(In desk) arm extended to shoulder of next pupil.
- Eyes Front.** Quickly turn eyes and head to front and drop hand to side.
- Attention.** Hands at sides, head erect, chin depressed, heels in line and closed, toes turned out, shoulders well pressed back, eyes steadily looking to front.

## STANDARD FORMATION.

### 1st Practice.

- One.** Slowly with straightened arms bring hands to front, joining tips of fingers, raise arms braced, and lower fingers on head.
- Two.** Throw up hands and arms, palms inwards, and lower outwards to position of attention.
- Three.** Slowly raise arms above head, palms turned upwards.
- Four.** Quickly lower elbows to sides, hands to front of shoulders, palms to front, chest well advanced.
- Steady.** Quickly throw out hands and arms from shoulders, and lower slowly to attention.

## PHYSIOLOGICAL EXERCISES.

### 2nd Practice.

- One.** Bring hands smartly to back, grasping both elbows.
- Two.** Slowly bring hands to front, clenched, in line with waist.
- Three.** Throw up hands clenched, under chin, elbows raised.
- Four.** Brace hands slowly across the chest, elbows brought close to sides; raise body off both heels, and extending hands and arms above head, lower to "attention." "Stand at ease."

## CHEST EXPANSION.

- Left.** Same Practice "left," rise on left toe, eyes directed to hand.
- Two.** Resume position of attention. Repeat exercises.

## BENDING and STRETCHING THE ARMS.

- One.** Elbows close to sides, quickly bend the arms, hands in line with shoulders and forced back, hands clenched, nails to front.
- Two.** Opening hands, turn backs upward, shoot them out right and left in line with shoulders, thumbs close to fore-fingers.
- One.** Return quickly to one.
- Three.** Opening hands palms to front, throw up arms perpendicularly above shoulders, upper part of body stretched upwards, eyes directed to hands, head bent back.
- Four.** Resume position of attention. Repeat exercise. "Stand at ease."

## WORKING SHOULDERS.

- One.** Raise the arms level with shoulders, at right angles to body, elbows forced to rear, arms bent, hands clenched and close to shoulders, forearms directly over upper arms.
- Two.** Straighten arms, keeping them level with shoulders, hands open, palms upwards.
- Three.** Throw arms to front in line with shoulders and strike palms together.
- Four.** Draw elbows quickly to rear, bending arms, hands clenched, and close to shoulders, knuckles turned up, chest expanded, head erect.
- Five.** Resume position of attention. Repeat exercise. "Stand at ease."

## SPECIAL STAVE DRILL.

- Stave at right side,** arms extended in position of attention.
- Ready.** Left hand smartly to right shoulder, grasp stave, finger-nails to front, elbow square with shoulder.
- Two.** Bring stave down to horizontal position in front, knees well braced.

### First Practice.

- One.** Throw up stave above head, to full extent of arms.
- Two.** Lower stave on to shoulder blades. Elbows close to sides.
- Three.** Lower stave to full extent of arms at back.
- Two.** Return stave to shoulder blades.
- One.** " " above head as in one.
- Steady.** Lower stave in front of body. As at ready, two.
- Over.** Spring off both heels and throw stave overhead to position three at back.  
Repeat exercise, returning stave to ready two.

### Second Practice.

- Right.** Bring stave smartly to left side, with right hand over left eye, left arm well braced to back.













# REGULATIONS

TO BE

## OBSERVED IN THE WORKHOUSE.

|   | Hour of Rising.                 | Interval for Breakfast.                 | Time for Work.        | Interval for Dinner.  | Time for Work.       | Interval for Supper. | Time for going to Bed. |
|---|---------------------------------|---|-----------------------|-----------------------|----------------------|----------------------|------------------------|
| <b>From 25th March to 29th September.</b> | $\frac{1}{4}$ before 6 o'clock. | From $\frac{1}{2}$ past 6 to 7 o'clock. | From 7 to 12 o'clock. | From 12 to 1 o'clock. | From 1 to 6 o'clock. | From 6 to 7 o'clock. | 8 o'clock.             |
| <b>From 29th September to 25th March</b>  | $\frac{1}{4}$ before 7 o'clock. | From $\frac{1}{2}$ past 7 to 8 o'clock. | From 8 to 12 o'clock. | From 12 to 1 o'clock. | From 1 to 6 o'clock. | From 6 to 7 o'clock. | 8 o'clock.             |

These several times to be notified by Ringing a Bell; and during the time of Meals, Silence, Order, and Decorum to be maintained.

BY ORDER.

# INGREDIENT TABLE.

| FOOD.                    | Weight or Measure (approximate) of Product. | INGREDIENTS.   |
|--------------------------|---|--|
| Batter Pudding           | lb.   | 8oz. Flour; 1½ gill Milk; 1oz. Fat; 1oz. Baking Powder; Pepper and Salt to taste; Water a sufficiency.   |
| Batter for frying Fish   | —   | 4oz. Flour; 1oz. Fat; Salt to taste; Water a sufficiency. For two pounds of Fish.  |
| Beans, Haricot           | lb.   | 8oz. Haricot Beans; 1oz. Fat; Pepper and Salt to taste; Water a sufficiency.   |
| Bouillon (Beef Broth)    | quat.                                       | 3oz. Raw Beef, free from Bone; 5oz. Mixed Vegetables; Pepper and Salt to taste; Herbs; Water a sufficiency.  |
| Bread Pudding, steamed   | lb.   | 4oz. Bread; 1oz. Sugar; 1oz. Fat; 1oz. Currants or Raisins; 1 pint Milk; Mixed Spice to taste.   |
| Bread Pudding, baked     | —   | (Ingredients as above; product 1½)   |
| Broth, or Stock          | quat.                                       | 1½ oz. Bones; 4oz. Fresh Vegetables; Salt, Pepper, and Herbs to taste; Must Liqueur; Water a sufficiency.  |
| Broth, Vegetable         | quat.                                       | 2oz. Fresh Vegetables; 1oz. Drippings; 1 pint Must Liqueur; Salt and Pepper to taste.  |
| Cake, Plain              | lb.   | 7½ oz. Flour; 2oz. Sugar; 2oz. Drippings; 1oz. Currants; 1 gill Milk; Salt to taste; 1oz. Baking Powder; Water a sufficiency.  |
| Seed                     | lb.   | 15oz. Bread Dough; 2oz. Sugar; 2oz. Drippings; 1oz. Caraway Seeds.   |
| Onion (Ancho)            | quat.                                       | 1oz. Onion; 2oz. Sugar; 2 R. oz. Milk; Water a sufficiency.  |
| (Cake)                   | quat.                                       | 1oz. Onion; 2oz. Sugar; 4 pint Milk; Water a sufficiency.  |
| Coffee (Arabica)         | quat.                                       | 5oz. Coffee (20 per cent Chloro); 1oz. Sugar; 2 R. oz. Milk; Water a sufficiency.  |
| (Cake)                   | quat.                                       | 2oz. Coffee (20 per cent Chloro); 1oz. Sugar; 1 pint Milk; Water a sufficiency.  |
| Collops, minced          | lb.   | 10oz. Raw Beef, free from Bone; 1oz. Onion; Water a sufficiency.   |
| Dumplings                | lb.   | 11 oz. Bread Dough.  |
| Fish Pie                 | lb.   | 1½ oz. Fish, free from Skin and Bone; 1oz. Fat; 8oz. Potatoes (no skin and washed); 1 gill White Sauce; Salt and Pepper to taste.  |
| Fish Sauce (white sauce) | quat.                                       | 1oz. Drippings; 1 pint Milk; 1½ oz. Flour; Salt and Vinegar to taste; Water or Fish Liqueur a sufficiency.   |
| Fruit Pudding, dry       | lb.   | 7oz. Flour; 2oz. Fat; 2oz. Figs or Raisins or Currants; Salt to taste; Water a sufficiency.  |
| fresh                    | lb.   | 8oz. Flour; 1½ oz. Fat; 6oz. Fruit in season; 1oz. Sugar; Baking Powder; Salt and Water a sufficiency.   |
| Fruit, stewed            | quat.                                       | 16oz. Fruit in season; 8oz. Sugar; Water a sufficiency.  |
| Golden Pudding           | lb.   | 9oz. Flour; 2oz. Fat; 1oz. Yeast; 1 gill Milk; 1 teaspoonful Ground Ginger; Carbonated Soda and Water a sufficiency.   |
| Gruel                    | quat.                                       | 2oz. Oatmeal; 1oz. Treacle; Water and Salt a sufficiency. Almonds to be used occasionally.   |
| Hotch Potch Stew         | quat.                                       | 2oz. Raw Beef, free from Bone; 1oz. Flour; 1oz. Peas; 1oz. Scotch Barley; 4oz. Carrots or Turnips; 4oz. Onions; 1oz. Onions; Pepper, Salt, and Herbs to taste; Stock or Water a sufficiency. |
| Irish Stew               | quat.                                       | 2oz. Raw Meat free from Bone; or 10oz. Neck of Mutton cut two ribs up or Breast of Mutton; 1oz. Onion; 1½ oz. Potatoes; Pepper and Salt to taste; Water a sufficiency.                       |
| Meat Hashed              | lb.   | 12oz. Cooked or Tinned Meat, free from Bone; 2oz. Onion; 1oz. Flour; 1oz. Fat; Pepper and Salt to taste; Water a sufficiency.  |
| Meat Pie                 | lb.   | 2oz. Raw Beef, free from Bone; 2oz. Flour; 1oz. Potatoes; 1½ oz. Fat; Salt and Pepper to taste; Water a sufficiency.   |
| Meat Pudding             | lb.   | 2oz. Raw Beef, free from Bone; 2oz. Beef Suet; 5oz. Flour; Seasoning to taste; Water a sufficiency.  |
| Meat Stew (or Scouse)    | quat.                                       | 2oz. Raw Beef, free from Bone; 1oz. Flour; 1oz. Fat; 4oz. Potatoes; 4oz. Carrots and Turnips; 1oz. Onion; Pepper and Salt to taste; Water a sufficiency.                                     |
| Pasties                  | lb.   | 4oz. Meat, free from Bone, raw or cooked; 7oz. Flour; 1oz. Onion; 2oz. Potatoes; 2oz. Drippings; Salt and Pepper to taste; Water a sufficiency.  |
| Pease Pudding            | lb.   | 8oz. Split Peas; 1oz. Fat; Salt; Water or Must Liqueur a sufficiency.  |
| Potato Pie               | lb.   | 2oz. Raw Beef, free from Bone; 1oz. Fat; 8oz. Potatoes; 1oz. Flour; 1oz. Onion; 1 gill Must Liqueur; Pepper and Salt to taste.   |
| Potatoes with Milk       | lb.   | 1½ oz. Baked Potatoes; 1oz. Fat; 1oz. Flour; 1 gill Milk; Salt to taste.   |
| Porridge                 | quat.                                       | 4oz. Oatmeal; Water and Salt.  |
| Rice Pudding             | lb.   | 2oz. Rice; 4oz. Sugar; 1oz. Fat; 1 pint Milk; Water and Salt a sufficiency.  |
| Rice Milk                | quat.                                       | 1oz. Rice; 1oz. Sugar; 1oz. Fat; 1 gill Milk; Salt a sufficiency.  |
| Rice (plain boiled)      | lb.   | 2oz. Rice; Water and Salt a sufficiency.   |
| Roley-Poley Pudding      | lb.   | 8oz. Flour; 2oz. Fat (Beef); 1oz. Jam or 2oz. Treacle; Baking Powder; Salt and Water a sufficiency.  |
| Sago or Semolina Pudding | lb.   | 2oz. Sago or Semolina; 1oz. Sugar; 1oz. Fat; 1 pint Milk; Water and Salt a sufficiency.  |
| Savoury Mince            | quat.                                       | 8oz. Cooked Meat or 10oz. Raw Meat, free from Bone; 1oz. Onion; 1oz. Bread; 1oz. Drippings; 1 pint Must Liqueur; Salt and Pepper to taste.   |
| Sea Pie                  | lb.   | 6oz. Raw Beef, free from Bone; 1oz. Fat; 5oz. Carrots, Onions, and Turnips; 1oz. Flour; Water a sufficiency; Pepper and Salt to taste; Fat Cured—Pig Fat; 1oz. Fat; Salt a sufficiency.      |
| Shepherd's Pie           | lb.   | 4oz. Cold Meat, free from Bone; 1oz. Fat; 12oz. Cold Potatoes; 1oz. Onion; 1 gill Must Liqueur; Pepper and Salt to taste.  |
| Soup, Barley             | quat.                                       | 2oz. Raw Beef, free from Bone; 2oz. Bones; 1oz. Scotch Barley; 1oz. Oatmeal; 1oz. Carrots; 1oz. Salt, Pepper, and Herbs to taste; Water a sufficiency.                                       |
| Haricot                  | quat.                                       | 3oz. Raw Beef, free from Bone; 2oz. Bones; 1oz. Haricot Beans; 4oz. Vegetables; 1 gill Must Liqueur; 1oz. Drippings; Salt, Pepper, and Herbs to taste; Water a sufficiency.                  |
| Lentil                   | quat.                                       | 4oz. Raw Beef, free from Bone; 2oz. Bones; 2oz. Lentils; 4oz. Oatmeal; 1oz. Vegetables; Salt, Pepper and Herbs to taste; Water a sufficiency.  |
| Pea                      | quat.                                       | 2oz. Raw Beef, free from Bone; 2oz. Bones; 2oz. Split Peas; 1oz. Oatmeal; 1oz. Vegetables; Salt, Pepper, and Herbs to taste; Water a sufficiency.  |
| Suet Pudding             | lb.   | 8oz. Flour; 2oz. Fat (Beef); Salt to taste; Water a sufficiency.   |
| Tea (Ancho)              | quat.                                       | 2oz. Tea; 1oz. Sugar; 2 R. oz. Milk; Water a sufficiency.  |
| (Cake)                   | quat.                                       | 2oz. Tea; 1oz. Sugar; 1 pint Milk; Water a sufficiency.  |