

Learning Activity - Key Stage 3

This resource provides learning activities for your students using People's Collection Wales. It is one of a series of six relating to Paul Robeson for KS3.

Let Paul Robeson Sing!

Paul Robeson's Early Life

Paul Robeson- An Education

Paul Robeson: Global Citizen

Paul Robeson: Stage and Screen

Paul Robeson in Wales



Paul Robeson's Early Life



By South Wales Miners Library

Introduction

What do we know about the early life of Paul Robeson?

This unit supports pupils' development of enquiry skills by looking at some of the evidence of the early years of Robeson's life. What challenges and experience did his family have in their daily lives as African-American living in early twentieth century United States of America?

Tasks and learning objectives

- 1 What do we know about the Robeson family?
- 2 What challenges did the young Robeson meet?
- 3 Where did the Robeson family live?

1. What do we know about the Robeson family?



Reverend William Drew Robeson Mrs Maria Louisa Burstill Robeson

What do we know about Paul Robeson's family?

What sort of information would you like to find out about his early days?

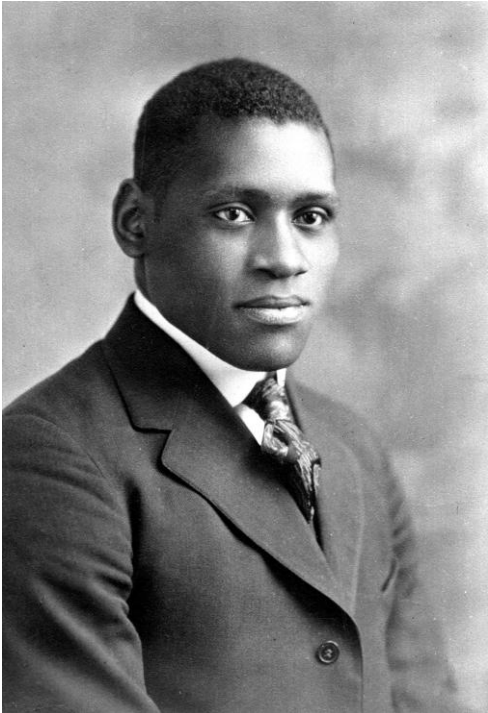
Discuss what you think about what makes you who you are. Is it your family, where you live, where you go to school or something else? It could be more than one influence.

Link to images on People's Collection Wales website

[Reverend William Drew Robeson](#)

[Mrs Maria Louisa Burstill Robeson](#)

2. What challenges did the young Robeson meet?



A teenage Paul Robeson

What can we discover about growing up as a young person in early twentieth century America?

What can we find out using evidence from what people said who knew Robeson as a young man? This is called oral history.

Think about what people say about you and whether they are true? Can we rely on people's memories to be a true reflection? Is it fact or opinion?

Link to image on People's Collection Wales website

[A teenage Paul Robeson](#)

3. Where did the Robeson family live?



Witherspoon Street, Princeton

Find out where Paul Robeson grew up in the United States of America.

Use GIS maps to locate where Robeson lived as a child.

<http://bit.ly/aL4opi>

What do you think the photograph of his birthplace tells us about Robeson? Was his family rich or poor? Is it a small or a large house? Is it in good condition or run-down?

Discuss what can we find out about people by looking at photographs of where they lived.

Think about what information is fact or opinion.

Link to image on People's Collection Wales website

[Witherspoon Street, Princeton](#)